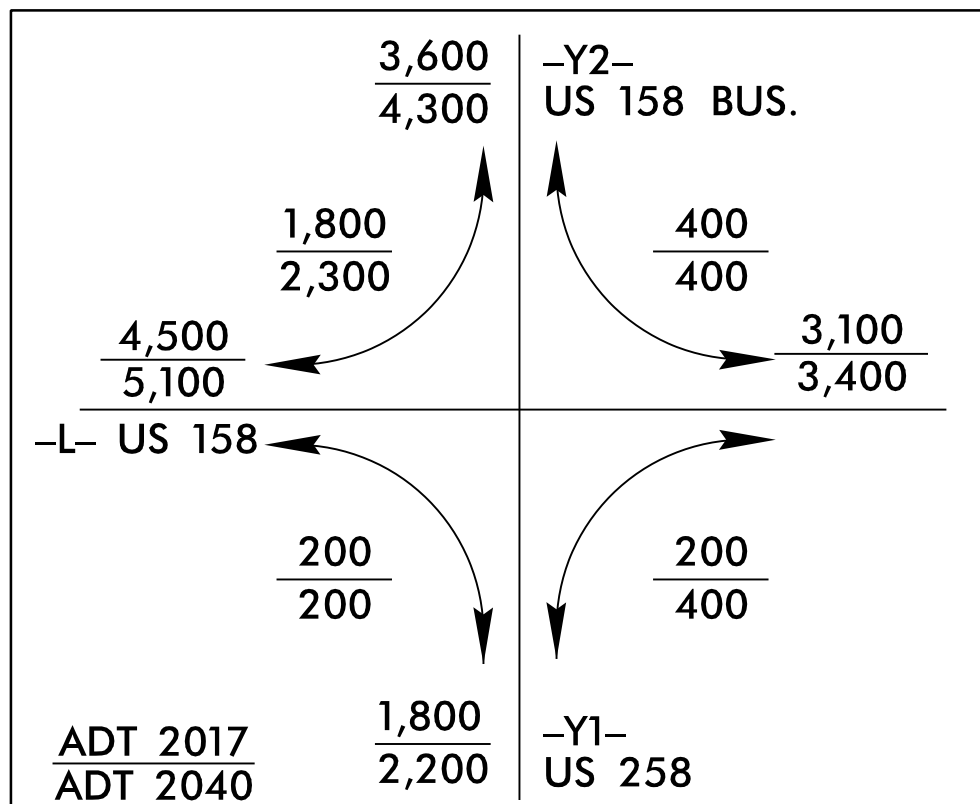
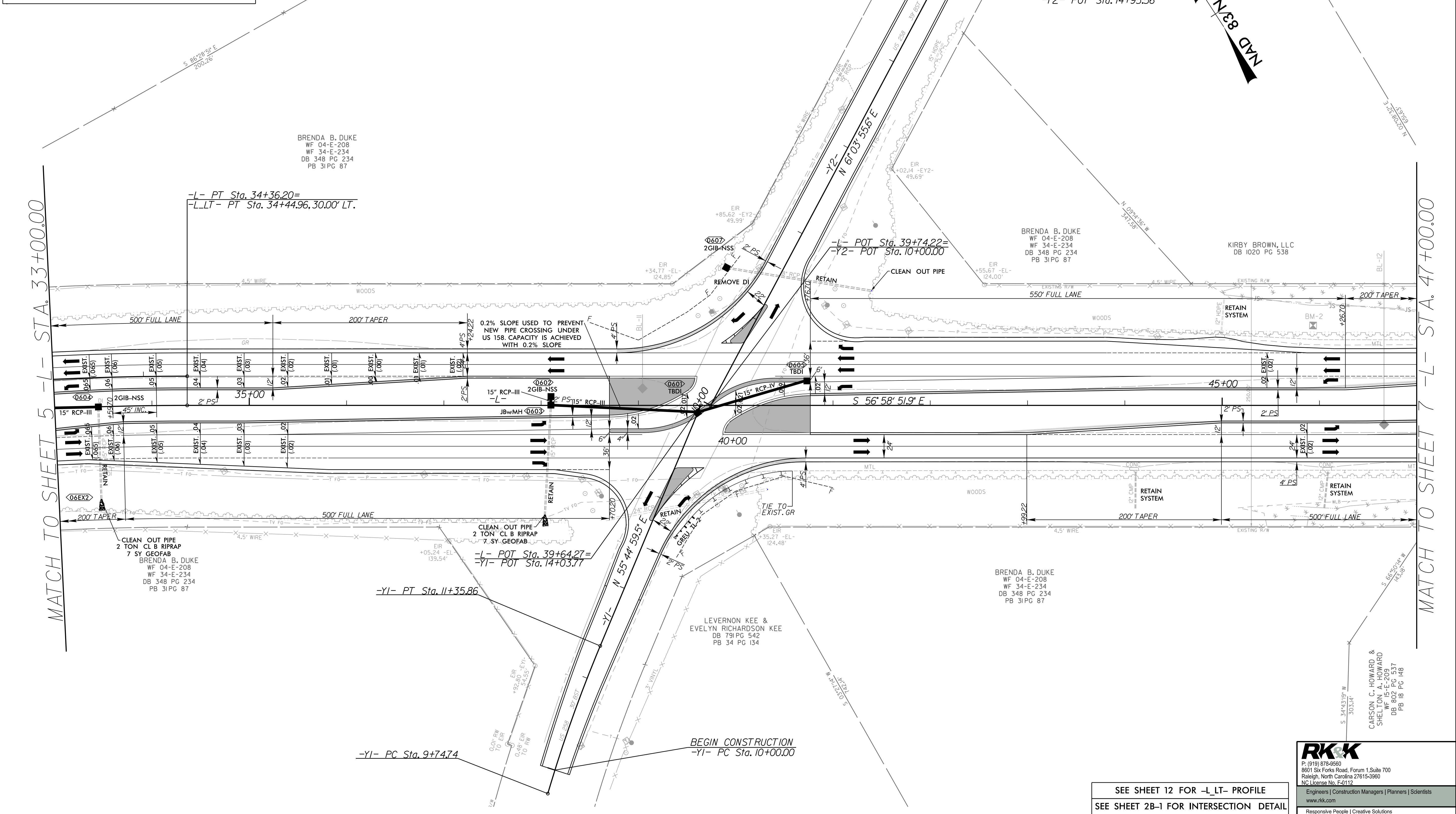


R:\Road\Projects\105701B_Rdy_esh_06.dgn 1/9/2013 5:14/99



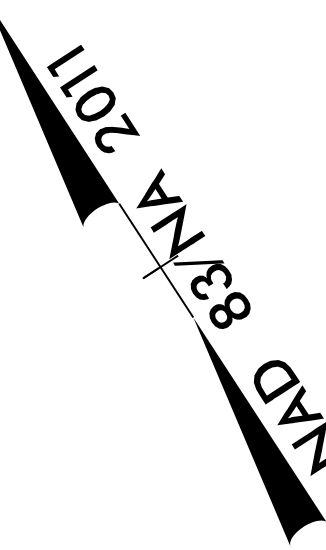
-L-	-Y1-
PI Sta 26+66.49	PI Sta 10+55.38
$\Delta = 31^{\circ}36'47.0''$ (RT)	$\Delta = 6^{\circ}21'59.4''$ (RT)
$D = 1^{\circ}59'59.5''$	$D = 3^{\circ}57'05.2''$
$L = 1,580.77'$	$L = 1611.2'$
$T = 811.07'$	$T = 80.64'$
$R = 2,865.00'$	$R = 1,450.00'$
SE = EXIST.	SE = EXIST.

PROJECT REFERENCE NO. W-5701B	SHEET NO. 6
ROADWAY DESIGN ENGINEER	HYDRAULICS ENGINEER
DOCUMENT NOT CONSIDERED FINAL UNLESS ALL SIGNATURES COMPLETED	



MATCH TO SHEET 5 -L- STA. 33+00.00

MATCH TO SHEET 7 -L- STA. 47+00.00



SEE SHEET 12 FOR -L_LT- PROFILE
SEE SHEET 2B-1 FOR INTERSECTION DETAIL

RK&K
 P: (919) 878-9580
 8601 Six Forks Road, Forum 1, Suite 700
 Raleigh, North Carolina 27615-3960
 NC License No. F-0112
 Engineers | Construction Managers | Planners | Scientists
 www.rkk.com
 Responsive People | Creative Solutions