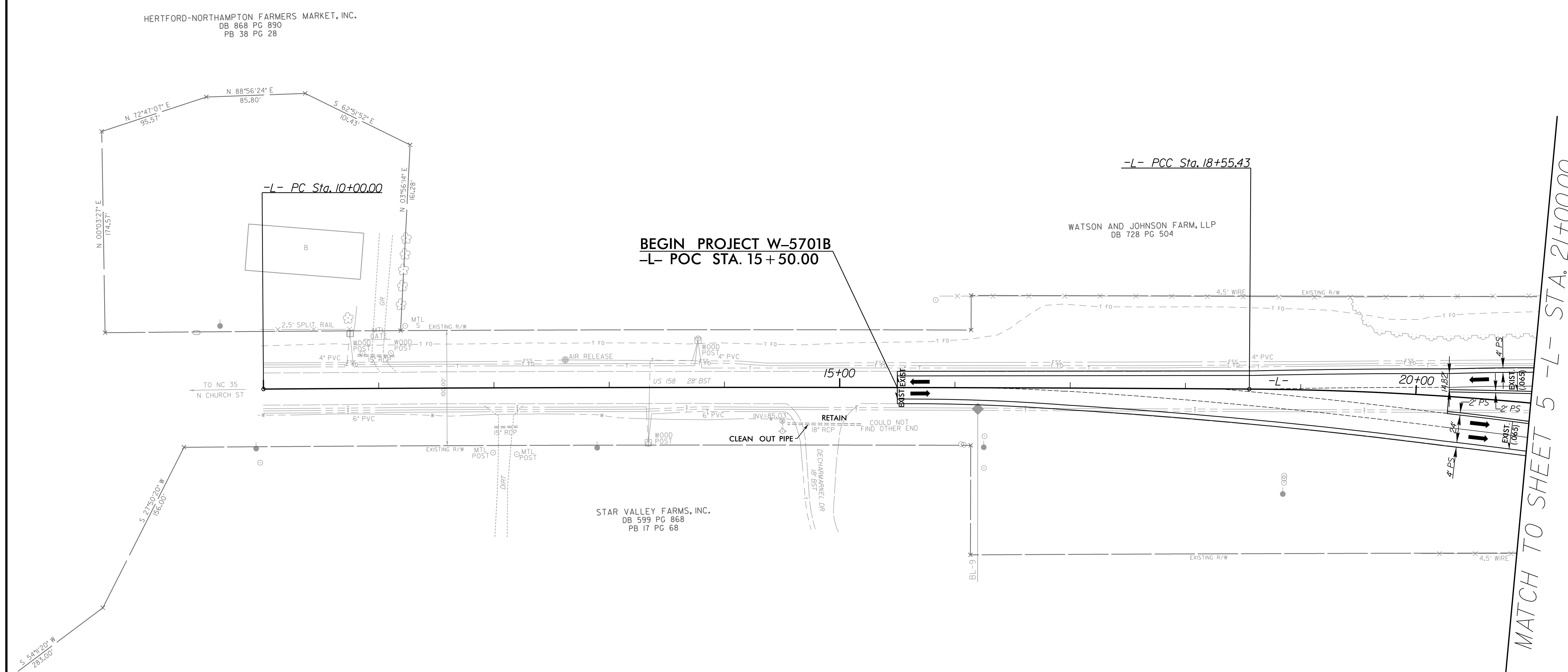


5/14/99

PI Sta 14+27.72	-L-	PI Sta 26+66.49
$\Delta = 0^\circ 47' 25.9" (RT)$		$\Delta = 31^\circ 36' 47.0" (RT)$
$D = 0' 05' 32.7"$		$D = 1' 59' 59.5"$
$L = 855.43'$		$L = 1,580.77'$
$T = 427.72'$		$T = 811.07'$
$R = 62,000.00'$		$R = 2,865.00'$
SE = EXIST.		SE = EXIST.

PROJECT REFERENCE NO. W-5701B	SHEET NO. 4
ROADWAY DESIGN ENGINEER	HYDRAULICS ENGINEER
DOCUMENT NOT CONSIDERED FINAL UNLESS ALL SIGNATURES COMPLETED	



BEGIN PROJECT W-5701B
-L- POC STA. 15+50.00

-L- PCC Sta. 18+55.43

MATCH TO SHEET 5 -L- STA. 21+00.00

NAD 83/NA 2011

R:\Road\2023\05\W5701B_Rdy_esh_04.dgn

RK&K
 P: (919) 878-0560
 8601 Six Forks Road, Forum 1, Suite 700
 Raleigh, North Carolina 27615-3960
 NC License No. F-0112
 Engineers | Construction Managers | Planners | Scientists
 www.rkk.com
 Responsive People | Creative Solutions