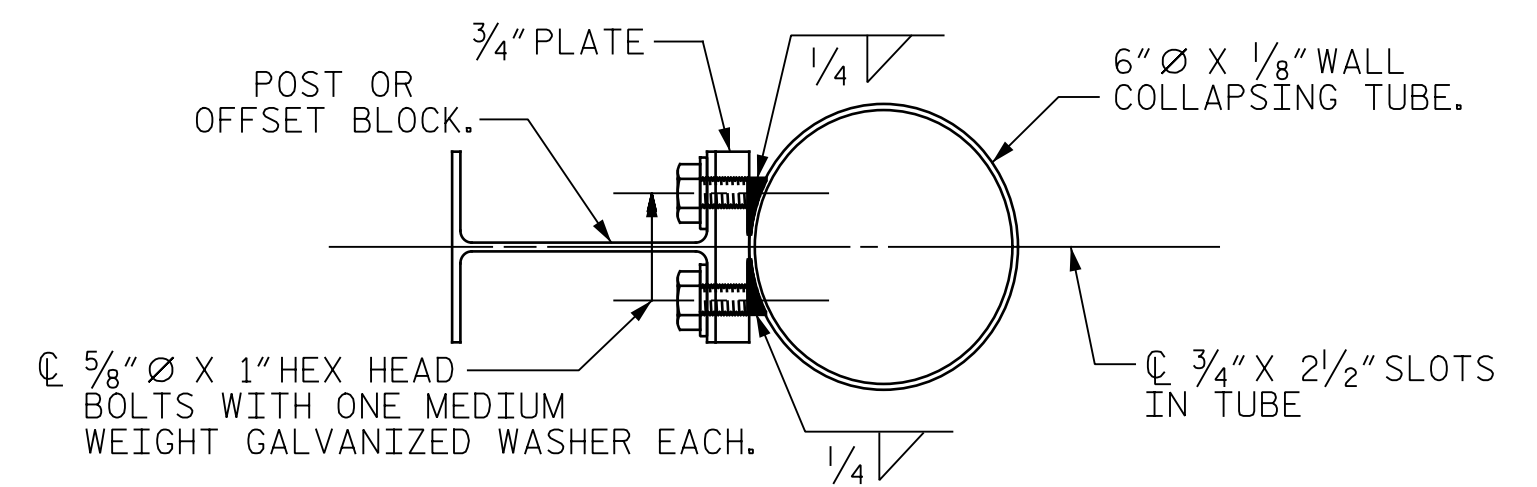
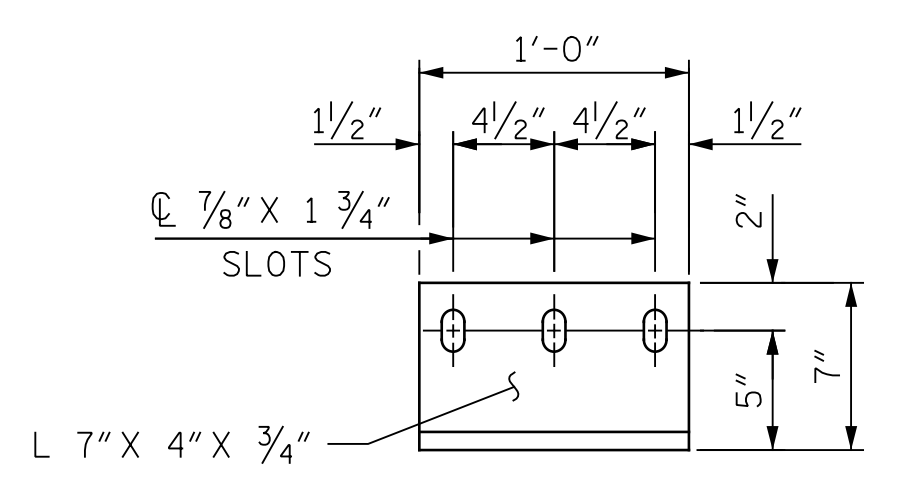


p:\gfn\p-w\pnet-pw-01\Documents\Projects\67945\5-WorKing\Task_010 - I-5955 Greensboro Rehab\Structures\CAD\2.0 100% Plans\415_003_I-5955_SMU_GR_002 11/17/2022 11:07:52 AM pdf_color_gfclt_FS.plt I-5955.tbi

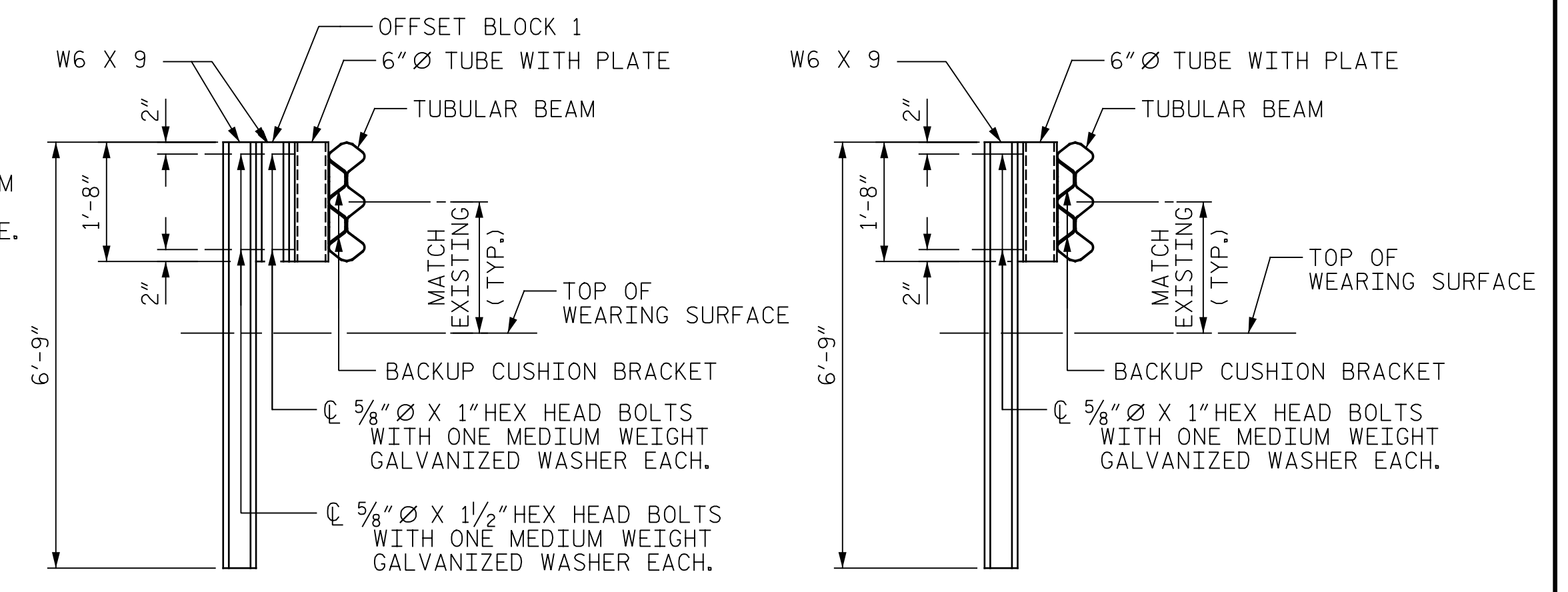


DETAIL SHOWING CONNECTION OF 6" Ø TUBE TO POST OR OFFSET BLOCK



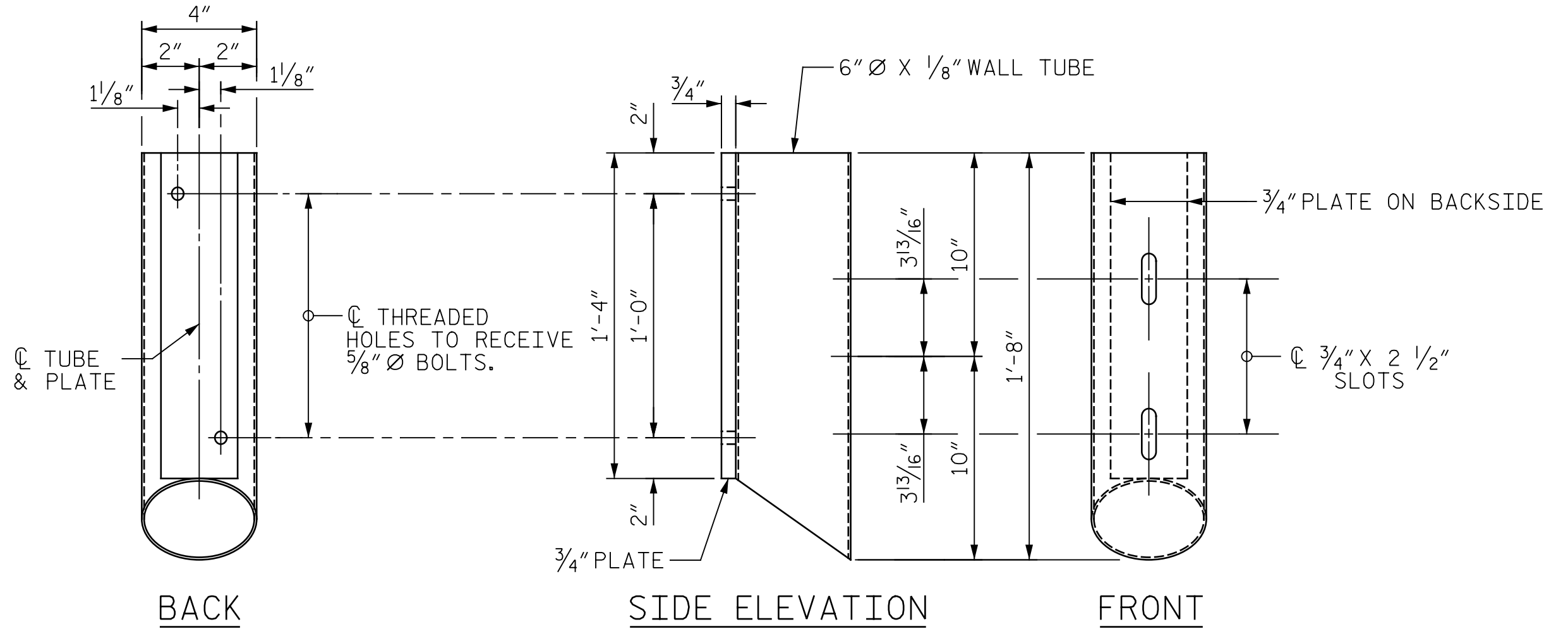
PLAN OF ANGLE

NOTE A: HEIGHT OF POST BP1 (DIMENSION A) SHALL BE DETERMINED IN THE FIELD SO THAT THE DISTANCE BETWEEN THE C OF THE TUBULAR BEAM AND THE TOP OF SLAB OR TOP OF FINISHED DECK SURFACE MATCHES THE EXISTING DISTANCE.
 NOTE B: SLOT TO BE DRILLED ON SIDE OF WEB FACING "ONCOMING TRAFFIC".

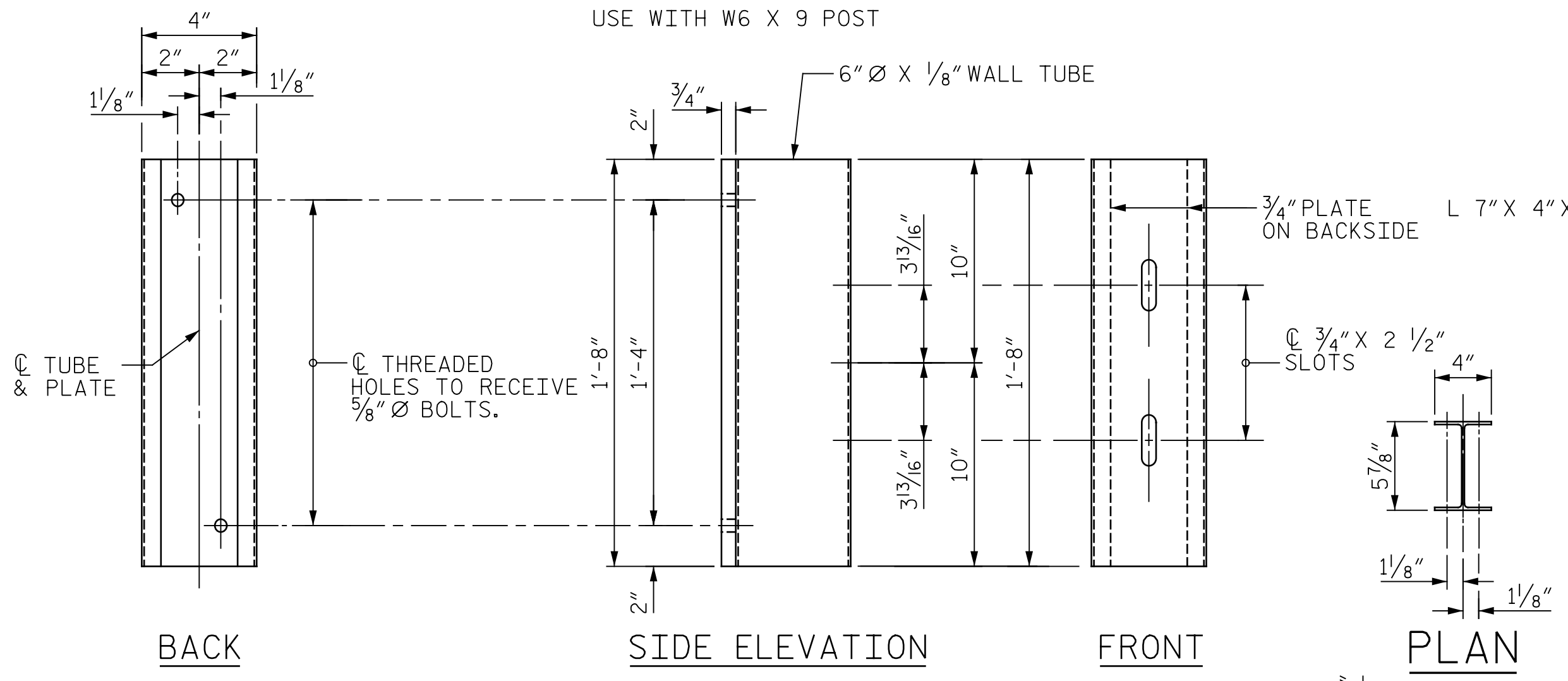


POST "EP1"
(USE AS NEEDED AT END OF BRIDGE)

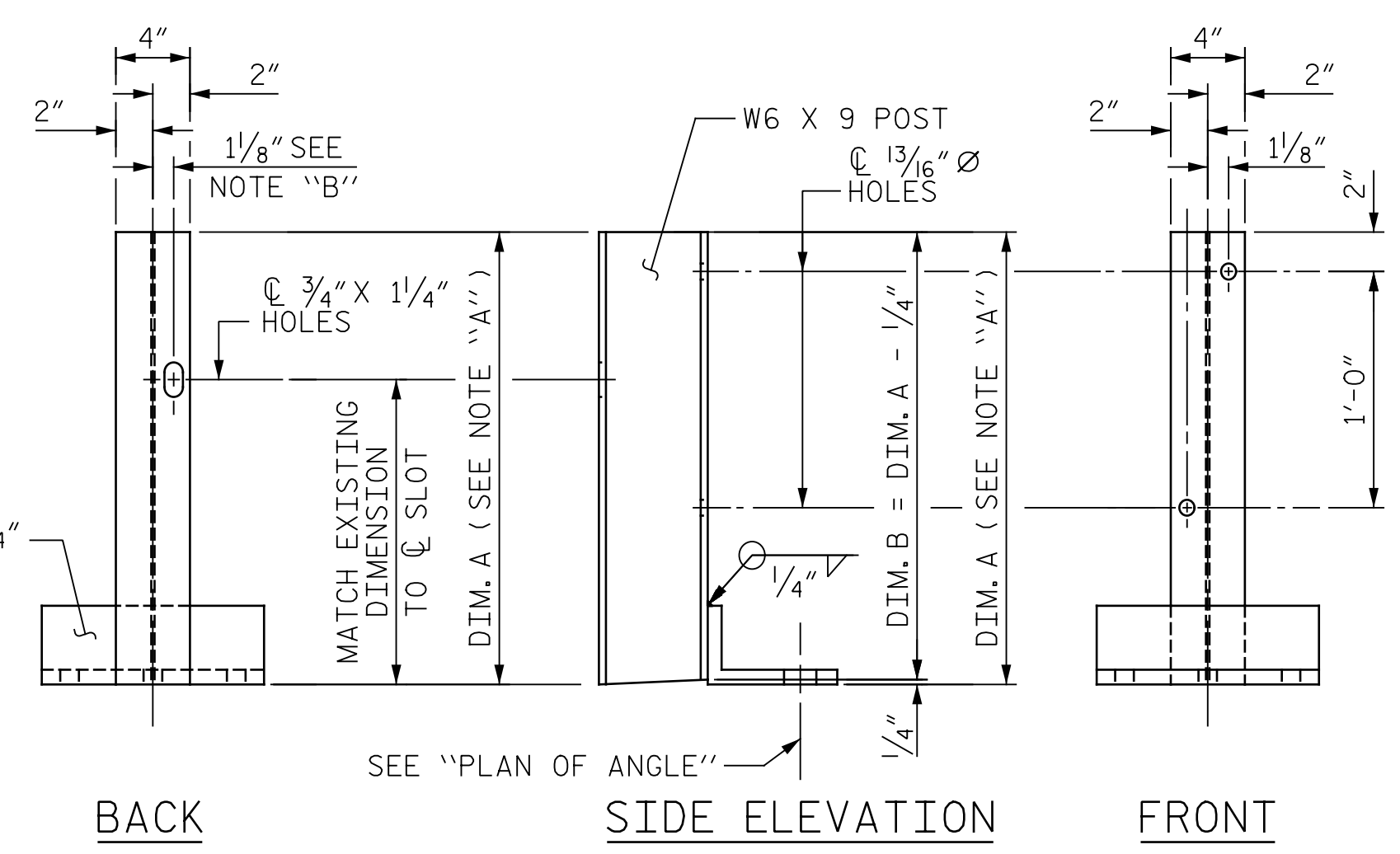
POST "EP2"
(USE AS NEEDED ALONG APPROACH ROADWAY SLAB)



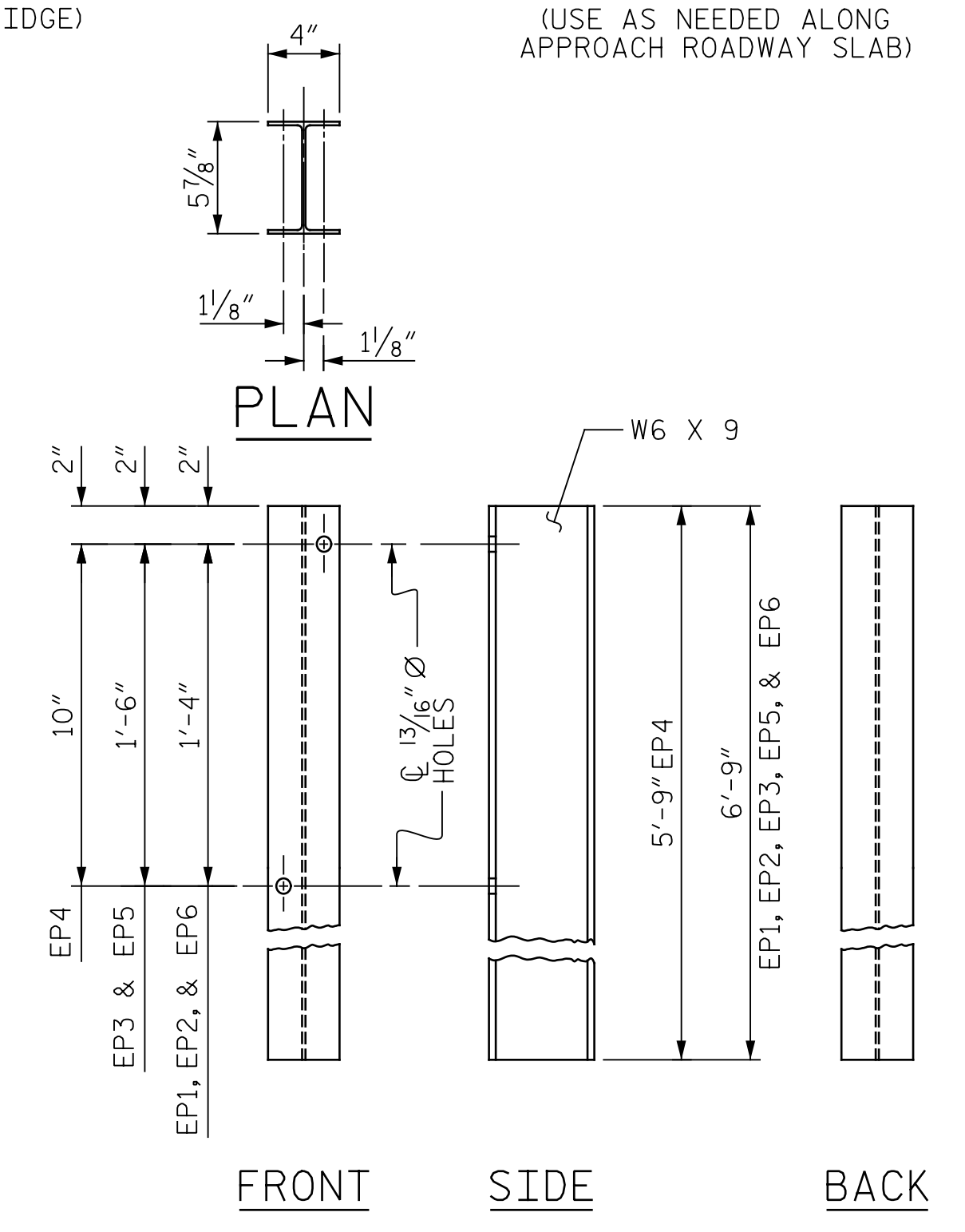
6" Ø TUBE DETAILS
USE WITH W6 X 9 POST



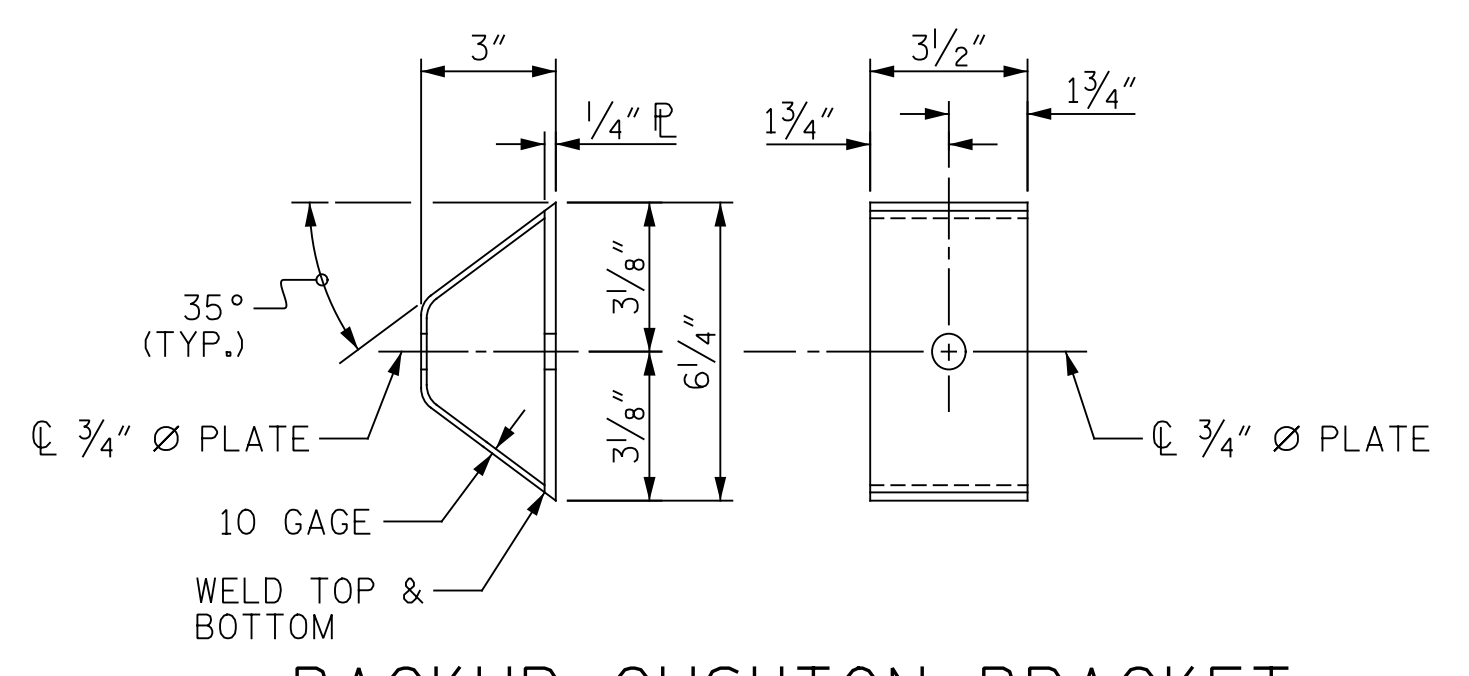
6" Ø TUBE DETAILS
USE WITH POST "EP1 & EP2"



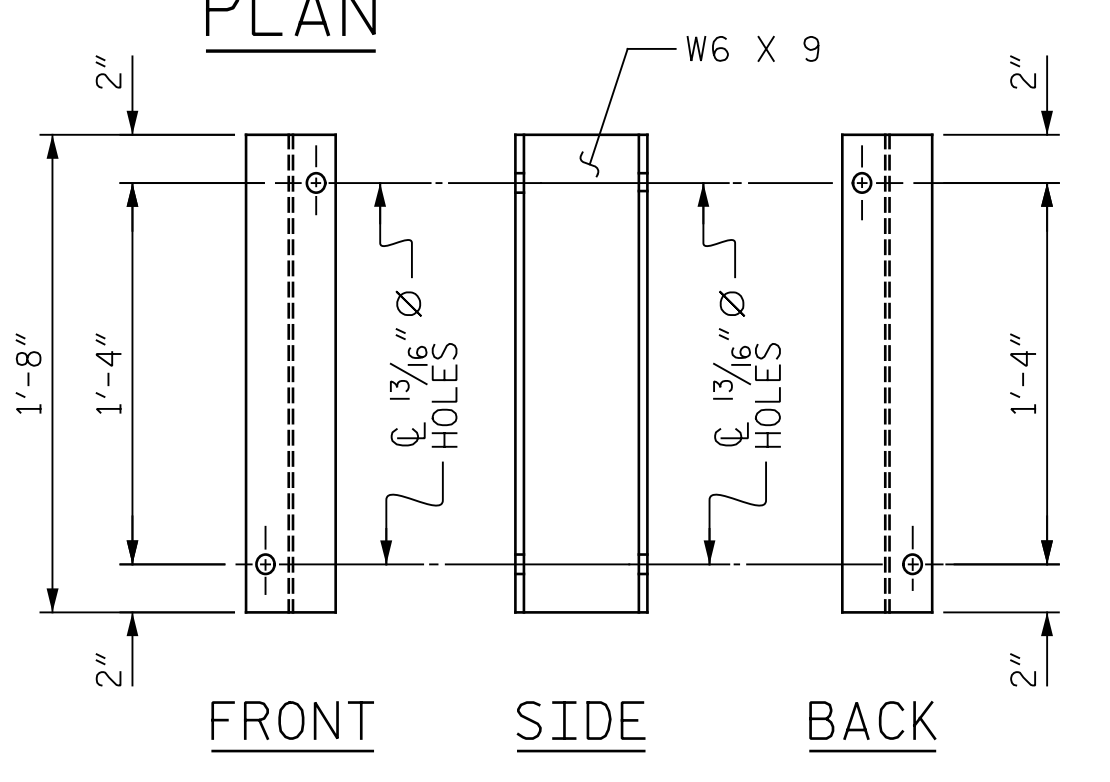
W6 X 9 POST DETAILS



DETAIL OF POST EP1 & EP2

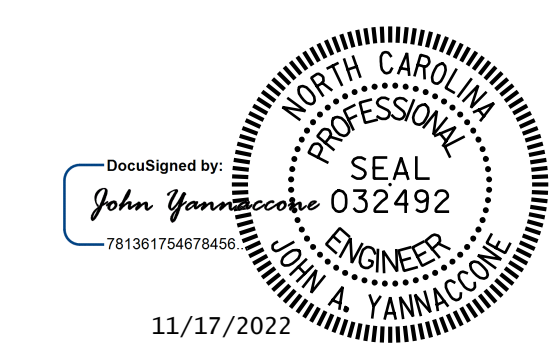


BACKUP CUSHION BRACKET



DETAILS OF OFFSET BLOCK 1
USE WITH POST "EP1"

DRAWN BY: J. MYA DATE: 10/2022
 CHECKED BY: J. YANNAKONE DATE: 10/2022



PROJECT NO. I-5955
 GUILFORD COUNTY
 BRIDGE NO. 400299, 400339 & 400340
 SHEET 2 OF 4

STATE OF NORTH CAROLINA DEPARTMENT OF TRANSPORTATION RALEIGH		TUBULAR BEAM GUARDRAIL DETAILS			
REVISIONS					
NO.	BY:	DATE:	NO.	BY:	DATE:
1			3		
2			4		
SHEET NO. SD-2		TOTAL SHEETS 127			

DOCUMENT NOT CONSIDERED FINAL UNLESS ALL SIGNATURES COMPLETED