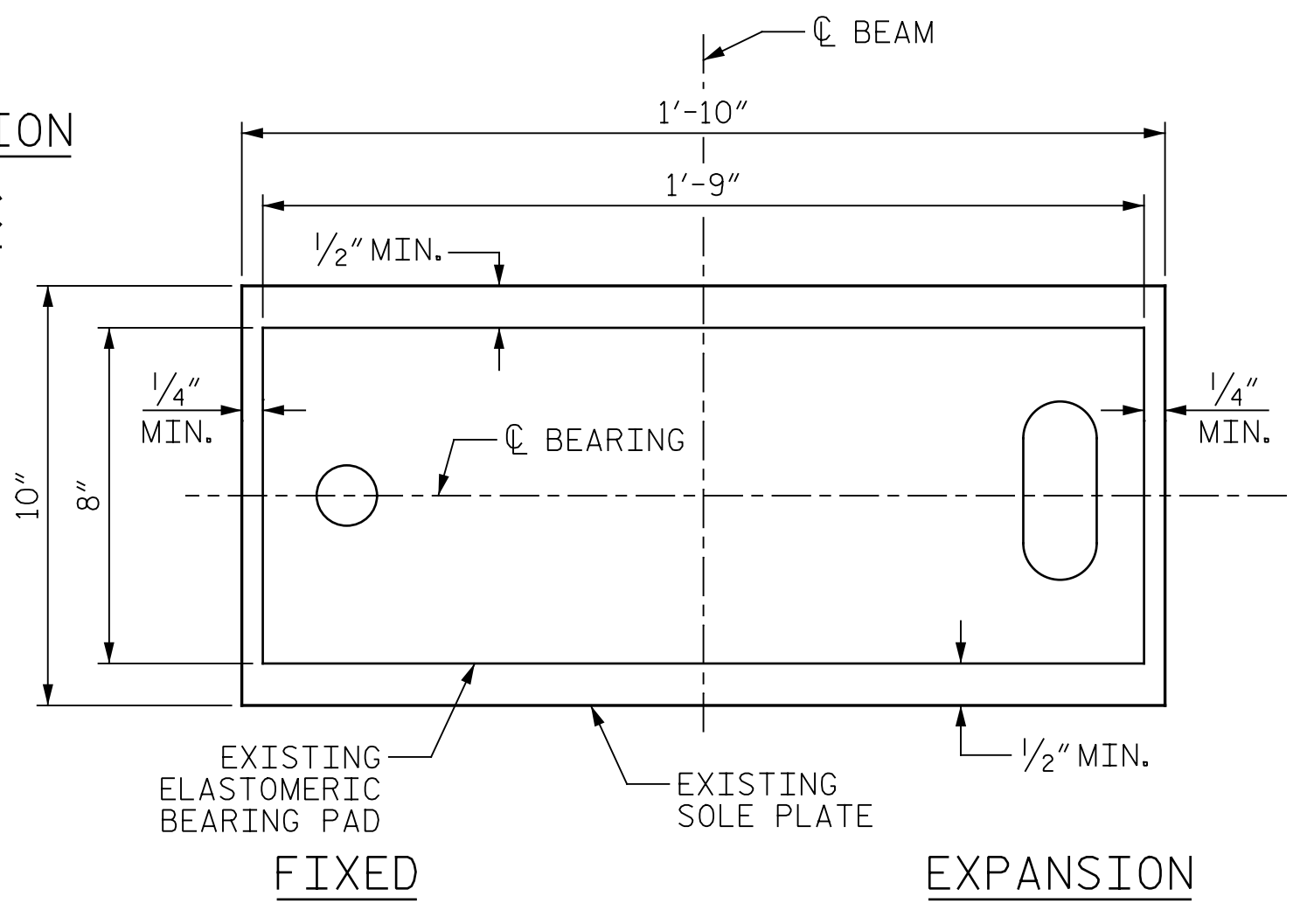
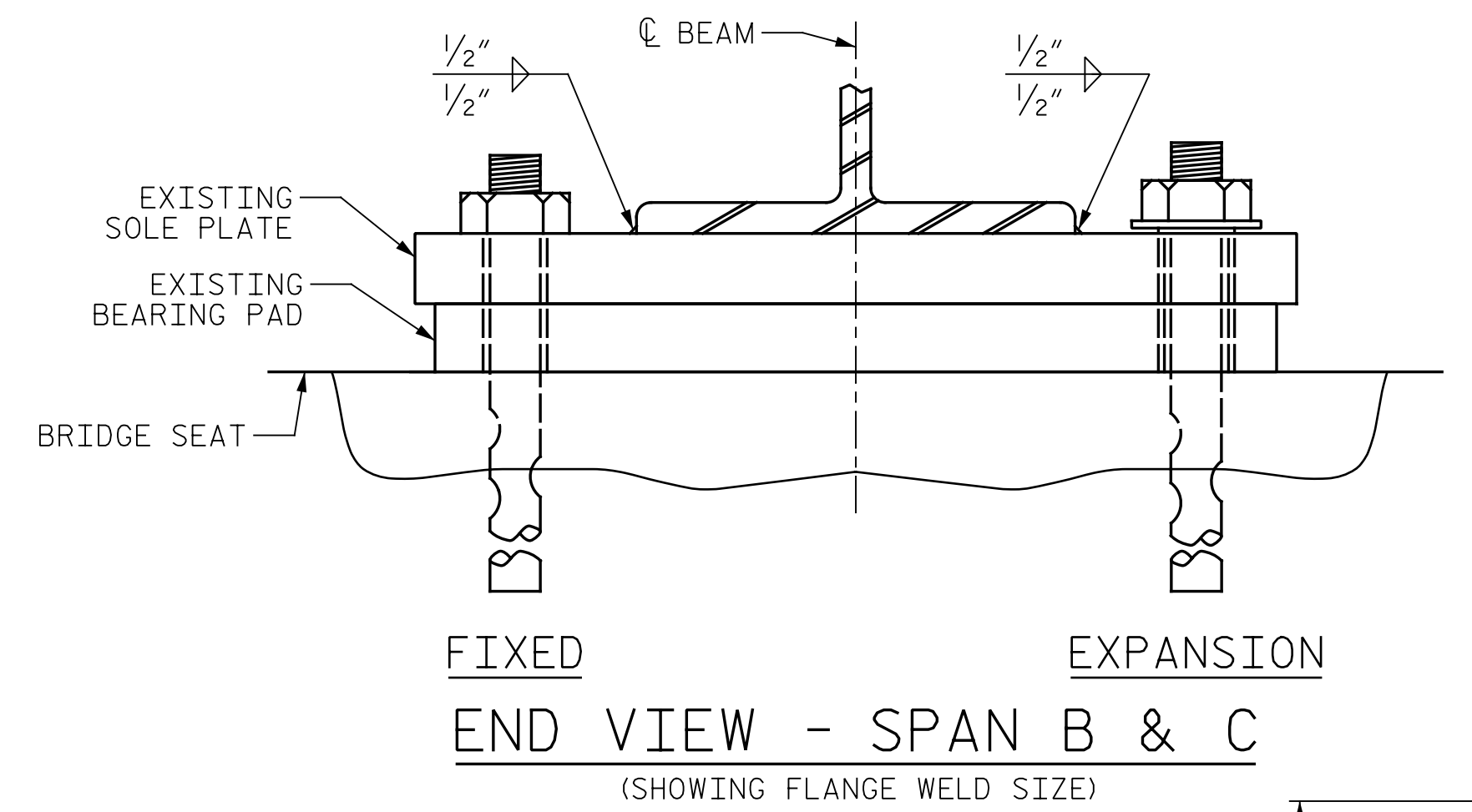
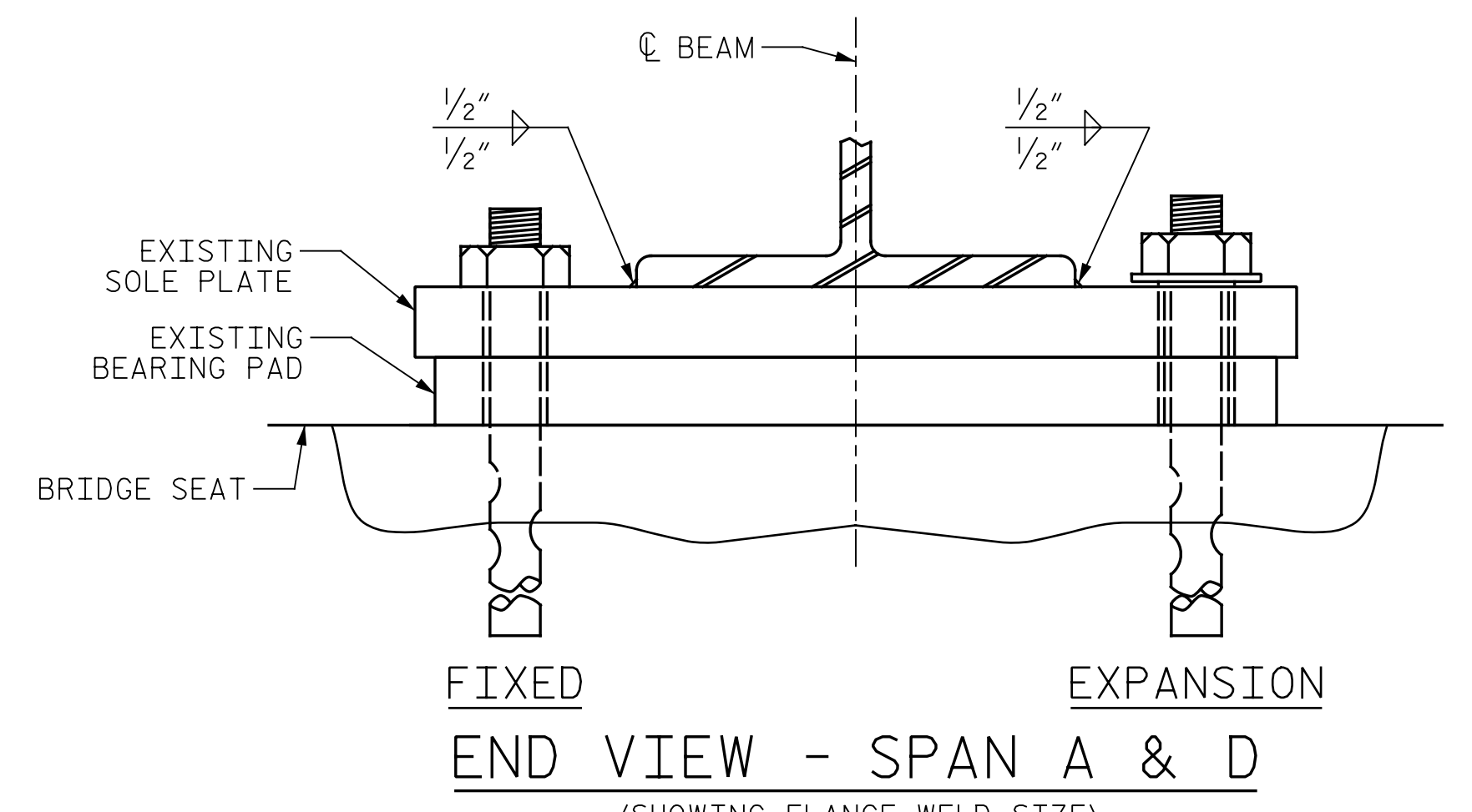


p:\gfnnet-pw\bentley.com\gfnnet-pw-01\Documents\Projects\67945\5-Working\Task 010 - I-5955 Greensboro Rehab\Structures\CAD\2.0 100% Plans\413_017_I-5955_SMU_BRG_009_400367
 I:\17\2022 10:00:25 AM pdf_color_gfclt_FS.plt I-5955.tbl



BEARING PHOTOGRAPHS

(FOR BEARING LOCATIONS, SEE "BEARING REPOSITIONING LOCATIONS" SHEET)



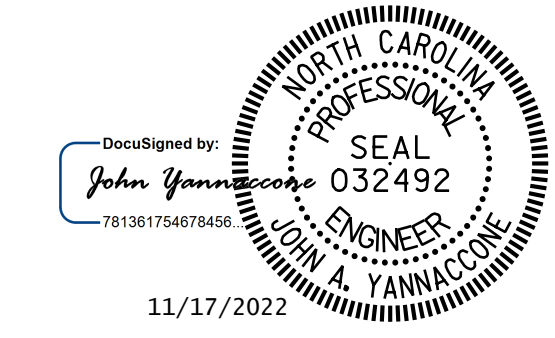
NOTES:
 THE GIRDERS SHALL BE JACKED AND THE BEARING PAD SHALL BE REPOSITIONED IN ORDER TO MEET THE MINIMUM CLEARANCES SHOWN IN THE BEARING ORIENTATION DETAIL. DUE TO THE DEFORMED ANCHOR BOLTS, ONE THE FOLLOWING MEANS MAY BE REQUIRED TO ACCOMPLISH THIS TASK:

1. DETACH THE EXISTING SOLE PLATE FROM THE GIRDER AND REPOSITION THE SOLE PLATE.
 2. REPOSITIONING THE BEARING PAD.
- THE CONTRACTOR MAY PROPOSE ALTERNATE METHODS, PROVIDED DETAILS ARE SUBMITTED TO THE ENGINEER FOR REVIEW AND APPROVAL.

WHEN FIELD WELDING THE SOLE PLATE TO THE GIRDER FLANGE, USE TEMPERATURE INDICATING WAX PENS, OR OTHER SUITABLE MEANS, TO ENSURE THAT THE TEMPERATURE OF THE SOLE PLATE DOES NOT EXCEED 300oF. TEMPERATURES ABOVE THIS MAY DAMAGE THE ELASTOMER.

FOR REPOSITIONING BEARINGS, SEE SPECIAL PROVISIONS.

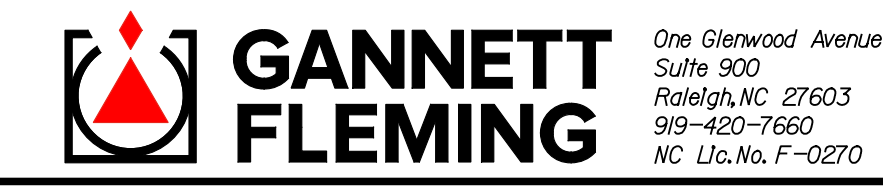
PROJECT NO. I-5955
GUILFORD COUNTY
 BRIDGE NO. 400367



STATE OF NORTH CAROLINA
 DEPARTMENT OF TRANSPORTATION
 RALEIGH

**BEARING
 REPOSITIONING
 DETAILS**

DRAWN BY: J. MYA DATE: 10/2022
 CHECKED BY: J. YANNACCONE DATE: 10/2022



DOCUMENT NOT CONSIDERED FINAL UNLESS ALL SIGNATURES COMPLETED

REVISIONS						SHEET NO.
NO.	BY:	DATE:	NO.	BY:	DATE:	
1			3			TOTAL SHEETS
2			4			127