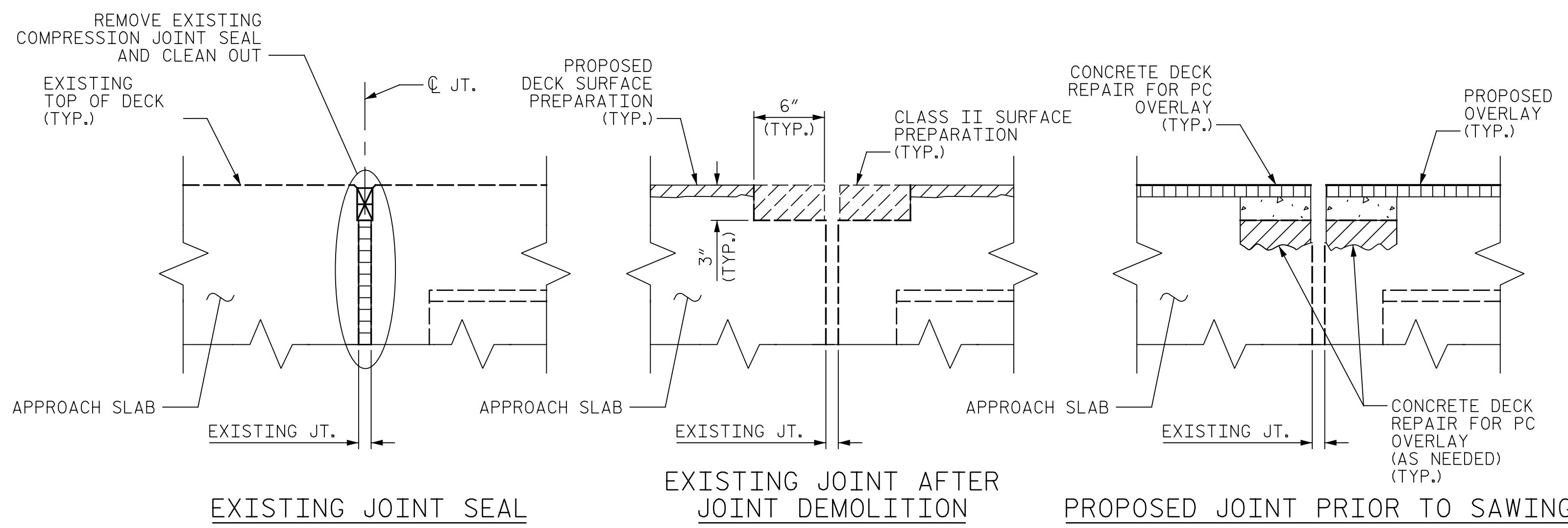
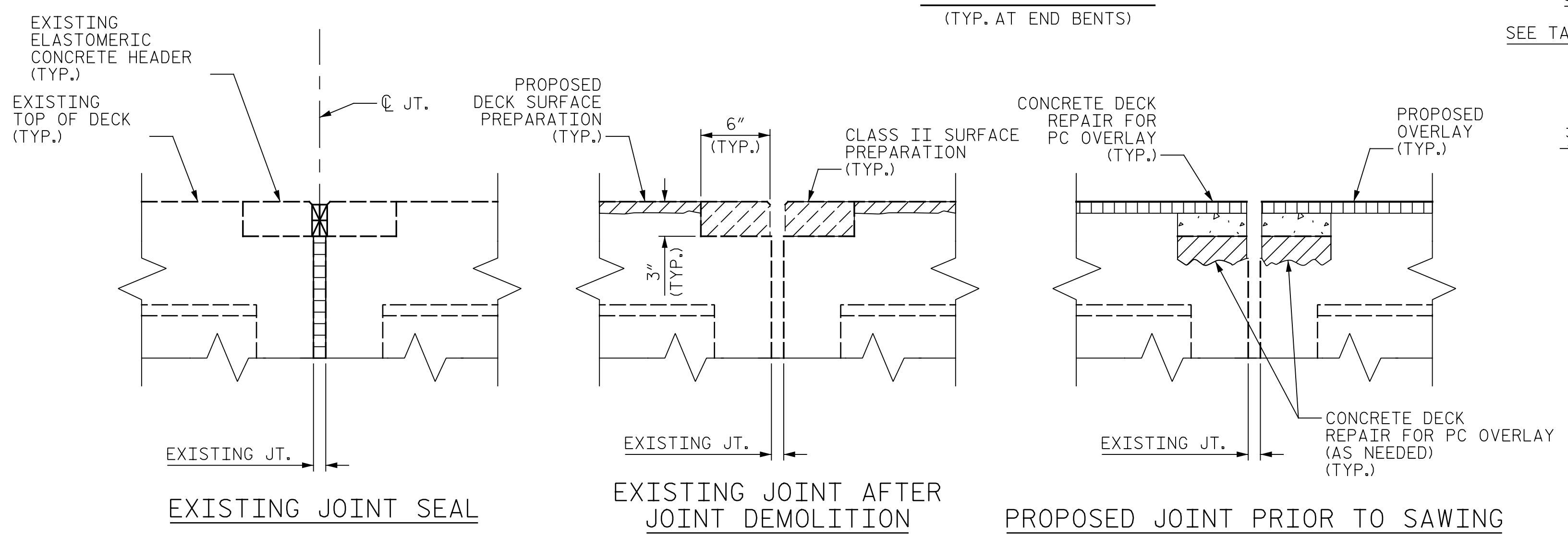


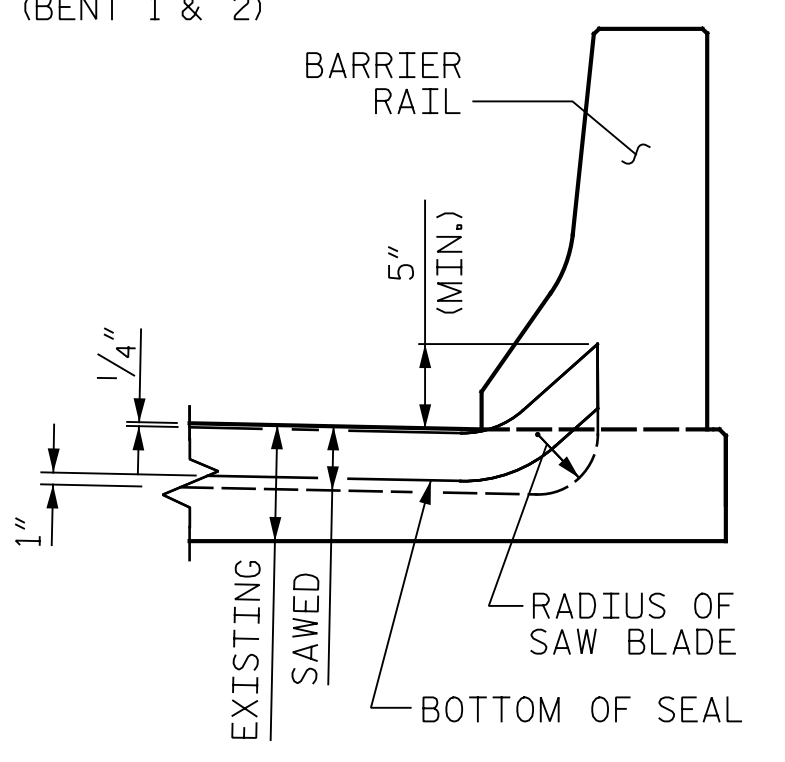
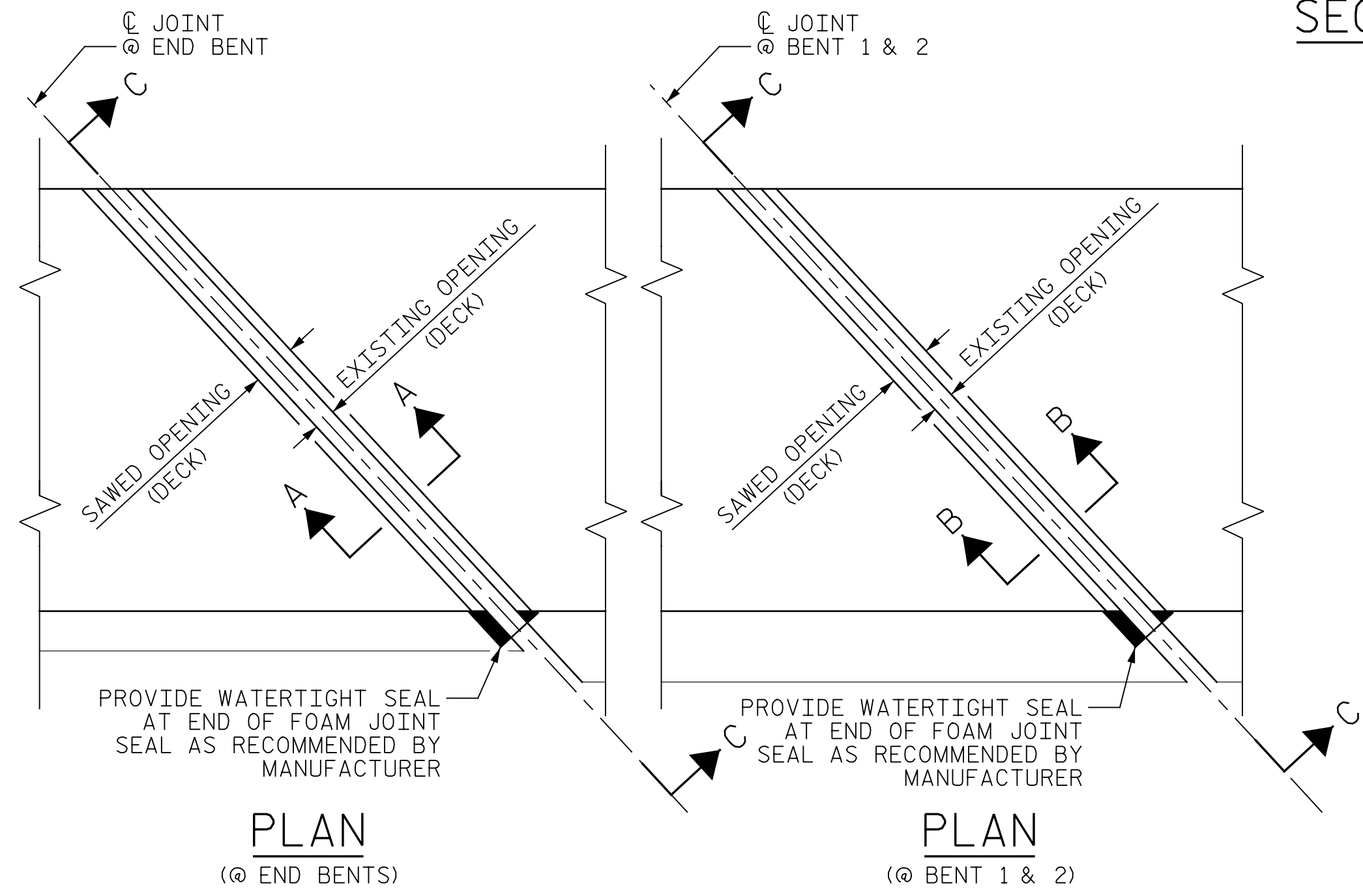
p:\gfnnet-pw\bentley.com\gfnnet-pw-01\Documents\Projects\67945\5-Work\King\Task\_010 - I-5955 Greensboro Rehab\Structures\CAD\2.0 100% Plans\413\_009.I-5955\_SMU\_JT\_005\_400367  
 I:\17\2022\_10\00\06 AM pdf\_color\_gfctt\_FS.plt I-5955.TB1



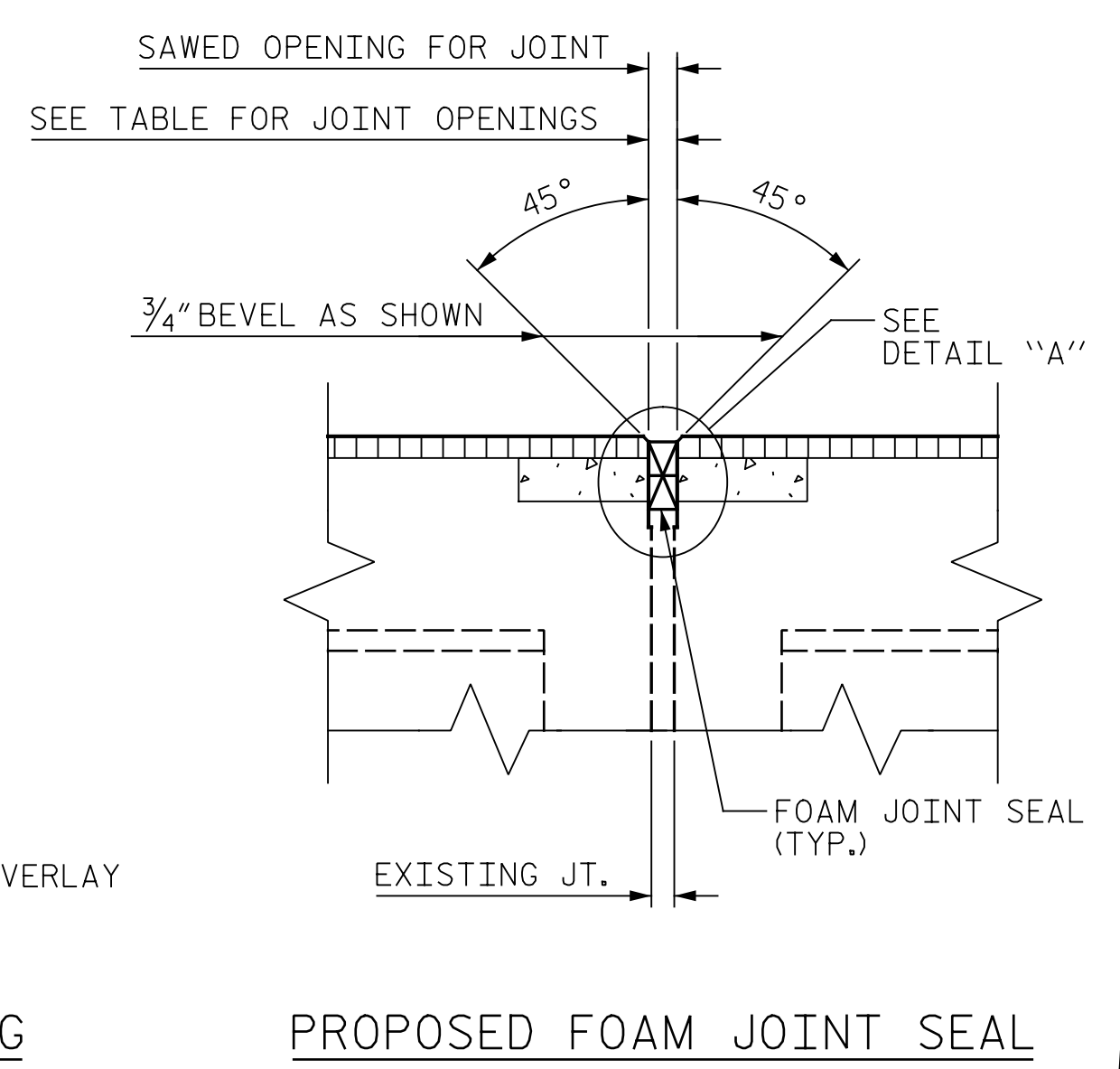
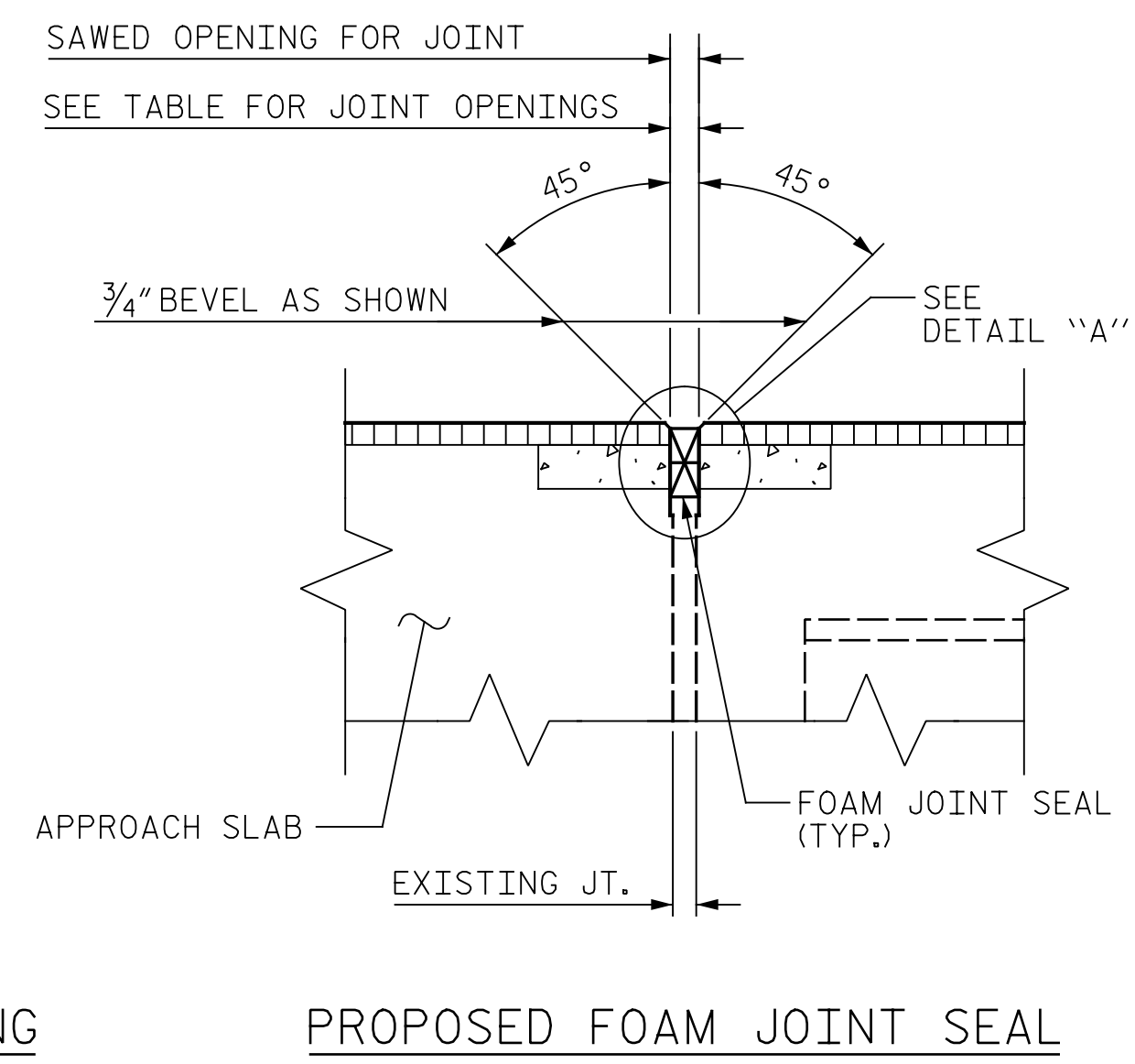
**SECTION A-A**  
(TYP. AT END BENTS)



**SECTION B-B**  
(BENT 1 & 2)

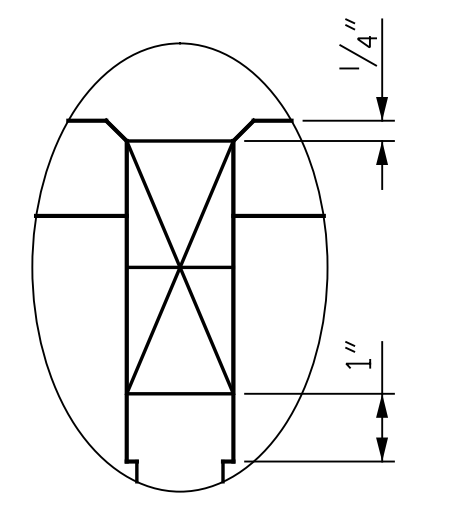


**SECTION C-C**  
 FOAM JOINT SEAL SHALL BE FACTORY FORMED OR CUT, HEAT WELDED AND TURNED UP PARALLEL TO SLOPED FACE OF CURB.



**NOTES:**

FINAL JOINT SEALS SHALL NOT BE INSTALLED UNTIL THE OVERLAY OR SEALANT WORK IS COMPLETE.  
 THE CONTRACTOR SHALL FIELD VERIFY THE EXISTING JOINT OPENING PRIOR TO ORDERING JOINT SEAL MATERIAL. IF THE ACTUAL JOINT OPENING VARIES FROM THE OPENING INDICATED IN THE DETAILS BY MORE THAN 1/4", NOTIFY THE ENGINEER.  
 THE MANUFACTURER IS TO PROVIDE THE NOMINAL UNCOMPRESSED SEAL WIDTH OF THE FOAM JOINT SEAL FOR THE SIZE OF THE OPENING ON THE PLANS AND ACCOMMODATE THE MINIMUM EXPANSION SHOWN ON THE PLANS.  
 FOAM JOINTS SHALL BE INSTALLED AS PER THE MANUFACTURER'S RECOMMENDATIONS.  
 THE CONTRACTOR SHALL TAKE CARE DURING JOINT REHAB OPERATIONS NOT TO DROP ANY MATERIAL BELOW THE BRIDGE WITHOUT PROTECTIVE DEVICES BELOW TO CATCH THE MATERIAL. ANY MATERIAL THAT FALLS BELOW THE BRIDGE SHALL BE CONTAINED, REMOVED AND DISPOSED OF BY THE CONTRACTOR AT NO EXTRA COST TO THE DEPARTMENT. IF THE ENGINEER DETERMINES THAT THE PROTECTIVE DEVICES ARE NOT ADEQUATE OR NOT BEING EMPLOYED, THE WORK SHALL BE SUSPENDED UNTIL ADEQUATE PROTECTION IS PROVIDED.  
 THE CONTRACTOR WILL NOT BE PERMITTED TO FORM THE JOINT IN LIEU OF SAWING THE JOINT.  
 THE INSTALLED FOAM JOINTS SHALL BE WATERTIGHT.  
 THE CONTRACTOR SHALL SAW CUT TO A NOMINAL DEPTH OF 1/2" BUT REINFORCING STEEL SHALL NOT BE DAMAGED. CONTRACTOR SHALL REMOVE SURFACE CONCRETE TO VERIFY THAT SAWCUT DEPTH WILL NOT DAMAGE EXISTING REINFORCING STEEL.  
 QUANTITIES SHOWN IN THE ELASTOMERIC CONCRETE FOR PRESERVATION TABLE ARE BASED ON THE MINIMUM JOINT DEMOLITION SHOWN.  
 FOR EXCAVATION BELOW THE BOTTOM OF PLANNED JOINT DEMOLITION, CONCRETE FOR DECK REPAIR SHALL BE PLACED IN THE EXCAVATED AREA TO THE ELEVATION AT THE BOTTOM OF THE PROPOSED ELASTOMERIC CONCRETE FOR PRESERVATION HEADERS SHOWN.  
 FOR CLASS II SURFACE PREPARATION, SEE OVERLAY SURFACE PREPARATION FOR POLYMER CONCRETE SPECIAL PROVISION.  
 FOR CONCRETE DECK REPAIR FOR PC OVERLAY, SEE SPECIAL PROVISIONS.  
 NO SEPARATE PAYMENT WILL BE MADE FOR REMOVING THE EXISTING MEDIAN AND BARRIER RAIL COVER PLATES. THE ENTIRE COST OF THIS WORK SHALL BE INCLUDED IN THE UNIT PRICE BID FOR "FOAM JOINT SEALS FOR PRESERVATION".  
 FOR SECTION D-D, SEE SHEET 2 OF 2.  
 CLEAN AND REMOVE DEBRIS FROM THE TOP OF THE BENT CAPS AND APPLY EPOXY PROTECTIVE COATING. EPOXY COATING SHALL BE APPLIED TO THE TOP SURFACE OF THE CAPS. THE CONTRACTOR SHALL NOT COAT THE AREA OF THE CAPS BENEATH THE ELASTOMERIC BEARINGS. FOR EPOXY COATING, SEE SPECIAL PROVISIONS.



**DETAIL "A"**

**SAWS JOINT OPENING TABLE**

| LOCATION   | SAWS JT. OPENING TABLE (PERPENDICULAR TO JT.) |                                   |                                  |
|------------|---|-----------------------------------|----------------------------------|
|            | AT 45°  | AT 60°                            | AT 90°                           |
| END BENT 1 | 1 <sup>5</sup> / <sub>16</sub> "              | 1 <sup>5</sup> / <sub>16</sub> "  | 1 <sup>5</sup> / <sub>16</sub> " |
| BENT 1     | 2 <sup>13</sup> / <sub>16</sub> "             | 2 <sup>11</sup> / <sub>16</sub> " | 2 <sup>1</sup> / <sub>2</sub> "  |
| END BENT 2 | 1 <sup>9</sup> / <sub>16</sub> "              | 1 <sup>9</sup> / <sub>16</sub> "  | 1 <sup>9</sup> / <sub>16</sub> " |

**SUMMARY OF QUANTITIES**

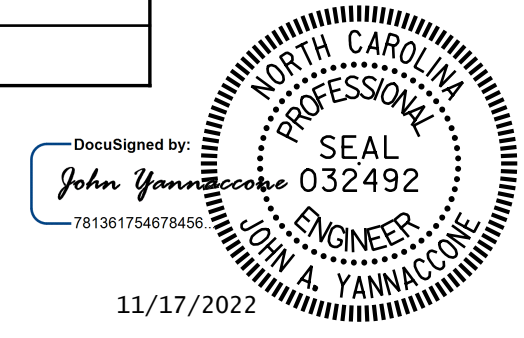
| LOCATION   | FOAM JOINT SEALS FOR PRESERVATION |                   | CONCRETE DECK REPAIR FOR PC OVERLAY |                   | EPOXY COATING       |                  |
|------------|-----------------------------------|-------------------|-------------------------------------|-------------------|---------------------|------------------|
|            | ESTIMATED (LIN. FT.)              | ACTUAL (LIN. FT.) | ESTIMATED (SQ. YDS.)                | ACTUAL (SQ. YDS.) | ESTIMATED (SQ. FT.) | ACTUAL (SQ. FT.) |
| END BENT 1 | 78.5                              |                   | 8.5                                 |                   | 184                 |                  |
| BENT 1     | 46.5                              |                   | 5.2                                 |                   | 144                 |                  |
| END BENT 2 | 78.5                              |                   | 8.5                                 |                   | 184                 |                  |

PROJECT NO. I-5955  
GUILFORD COUNTY  
 BRIDGE NO. 400367

SHEET 1 OF 2

STATE OF NORTH CAROLINA  
 DEPARTMENT OF TRANSPORTATION  
 RALEIGH

**FOAM JOINT SEALS**



11/17/2022

DRAWN BY: J. MYA DATE: 10/2022  
 CHECKED BY: J. YANNACCONE DATE: 10/2022



DOCUMENT NOT CONSIDERED FINAL UNLESS ALL SIGNATURES COMPLETED

| REVISIONS |     |       |     |     |       | SHEET NO. |
|-----------|-----|-------|-----|-----|-------|-----------|
| NO.       | BY: | DATE: | NO. | BY: | DATE: |           |
| 1         |     |       | 3   |     |       | S13-5     |
| 2         |     |       | 4   |     |       |           |

TOTAL SHEETS: 127