

p:\gfn\p-w\ben\p-w-01\Documents\Projects\67945\5-Work\Task 010 - I-5955 Greensboro Rehab\Structures\CAD\2.0 100% Plans\412\_015\_I-5955\_SMU\_FP\_008\_400364  
 11/17/2022 9:59:27 AM pdf\_color\_gfclt\_FS.plt I-5955.tbl

REPAIR QUANTITY TABLE		
REPOSITIONING BEARINGS		
	ESTIMATE	ACTUAL
REPOSITIONING SOLE PLATES	3 EA	
REPOSITIONING BEARING PADS	3 EA	

(R\*) REPOSITIONING SOLE PLATE/ BEARING PAD

**NOTES**

REPAIR LOCATIONS AND ESTIMATED QUANTITIES ARE GIVEN WITH THE BEST INFORMATION AVAILABLE. IF ADDITIONAL REPAIRS NOT SHOWN ON THE DRAWINGS ARE DEEMED NECESSARY BY THE ENGINEER, THE ENGINEER WILL NOTE ON THE DRAWINGS THE APPROXIMATE LOCATIONS AND DESCRIPTION OF THE REPAIRS AND ADJUST THE ACTUAL QUANTITIES ENTERED INTO THE REPAIR QUANTITY TABLE.

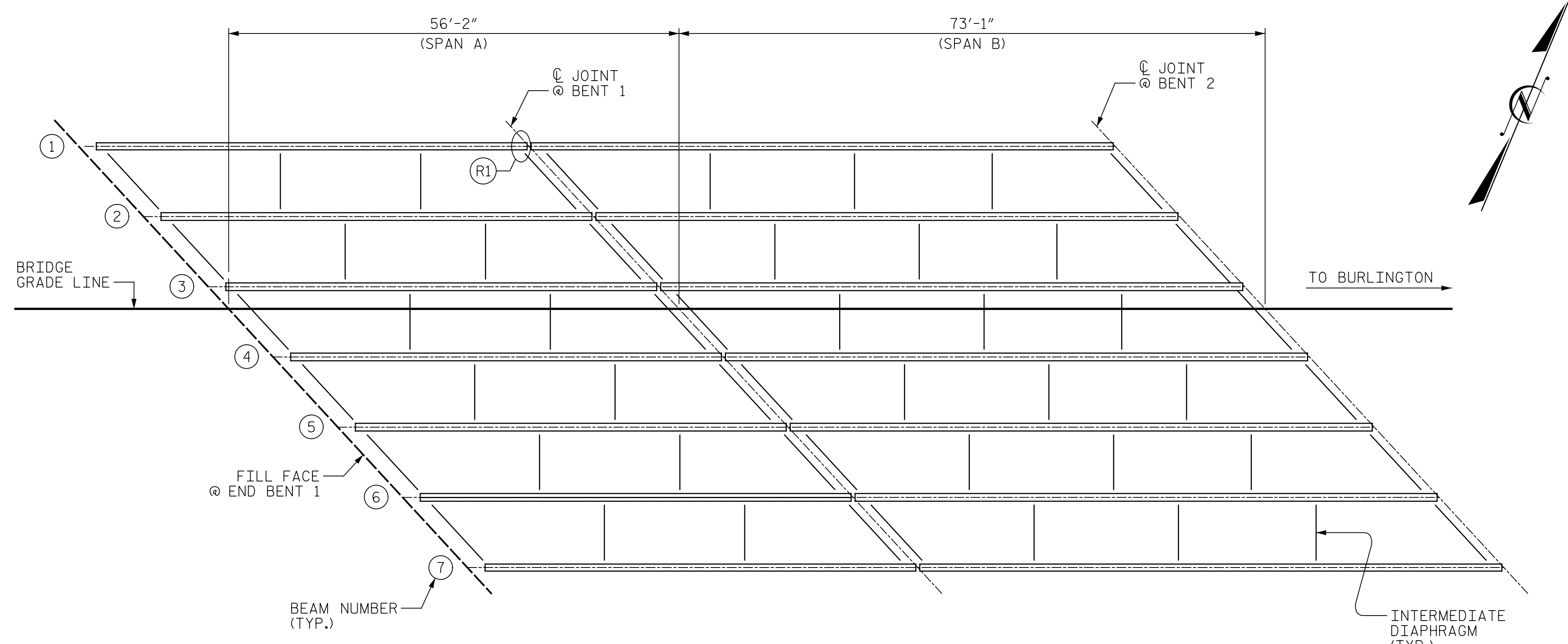
FOR REPOSITIONING BEARINGS, SEE SPECIAL PROVISIONS AND "BEARING REPOSITIONING DETAILS" SHEET.

FOR BRIDGE JACKING, SEE SPECIAL PROVISIONS.

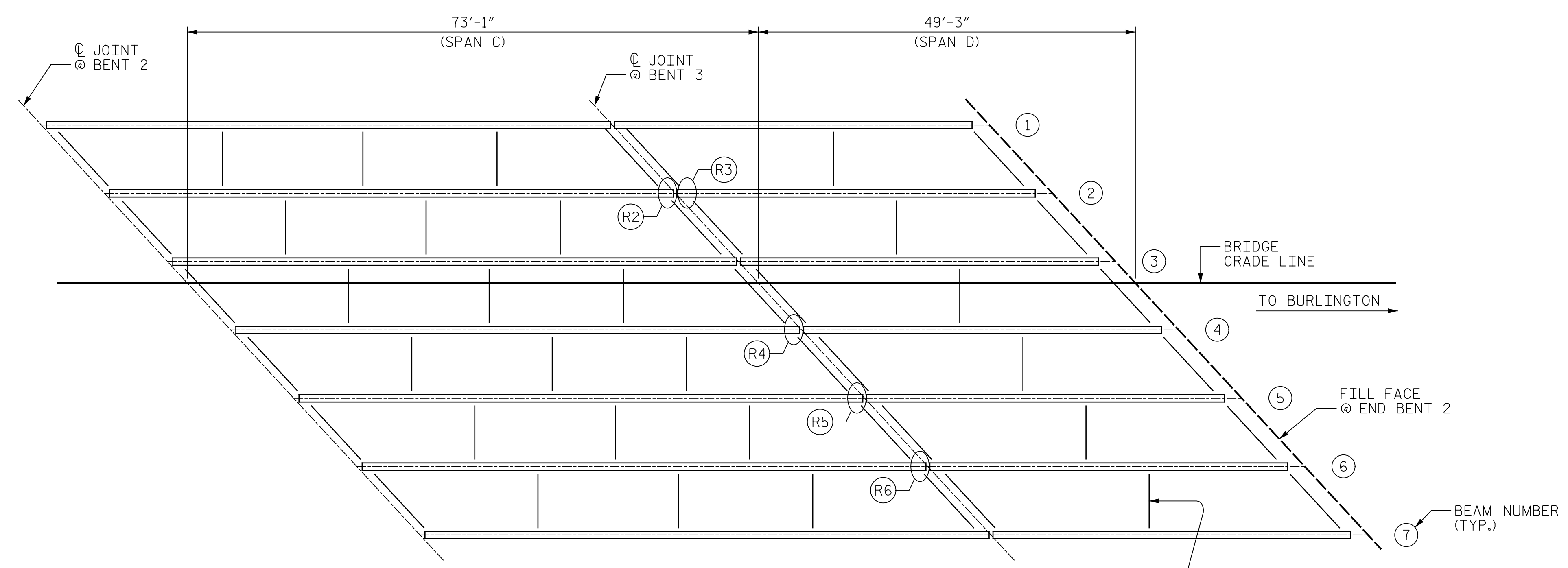
FOR BRIDGE JACKING DETAILS, SEE "JACKING DETAILS" SHEET.

THE REPAIR QUANTITIES REPORTED IN THE TABLE ARE ONLY AN ESTIMATE. THE CONTRACTOR AND ENGINEER SHALL INSPECT THE BEARINGS TO DETERMINE THE BEST REPAIR OPTION AND CORRESPONDING PAY ITEM FOR EACH BEARING THAT REQUIRES REPOSITIONING.

SOLE PLATES AND BEARING PADS SHALL BE REPOSITIONED BEFORE ANY JOINT REPAIRS OR GIRDER END PAINTING BEGINS.

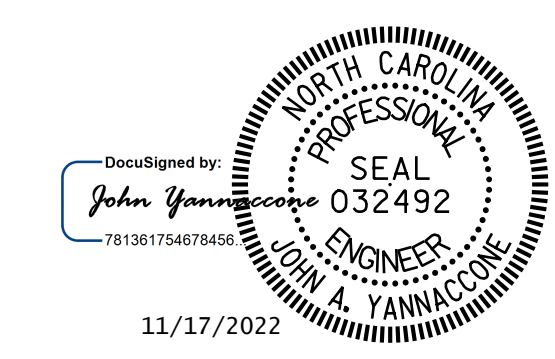


**BEARING REPOSITIONING LOCATIONS**  
 (OTHER LOCATIONS MAY EXIST, SEE NOTES)



**BEARING REPOSITIONING LOCATIONS**  
 (OTHER LOCATIONS MAY EXIST, SEE NOTES)

PROJECT NO. I-5955  
GUILFORD COUNTY  
 BRIDGE NO. 400364



STATE OF NORTH CAROLINA  
 DEPARTMENT OF TRANSPORTATION  
 RALEIGH  
**BEARING REPOSITIONING LOCATIONS**

DRAWN BY : J. MYA DATE : 10/2022  
 CHECKED BY : J. YANNACCONE DATE : 10/2022



DOCUMENT NOT CONSIDERED FINAL UNLESS ALL SIGNATURES COMPLETED

REVISIONS						SHEET NO.
NO.	BY:	DATE:	NO.	BY:	DATE:	
1			3			S12-8
2			4			TOTAL SHEETS 127