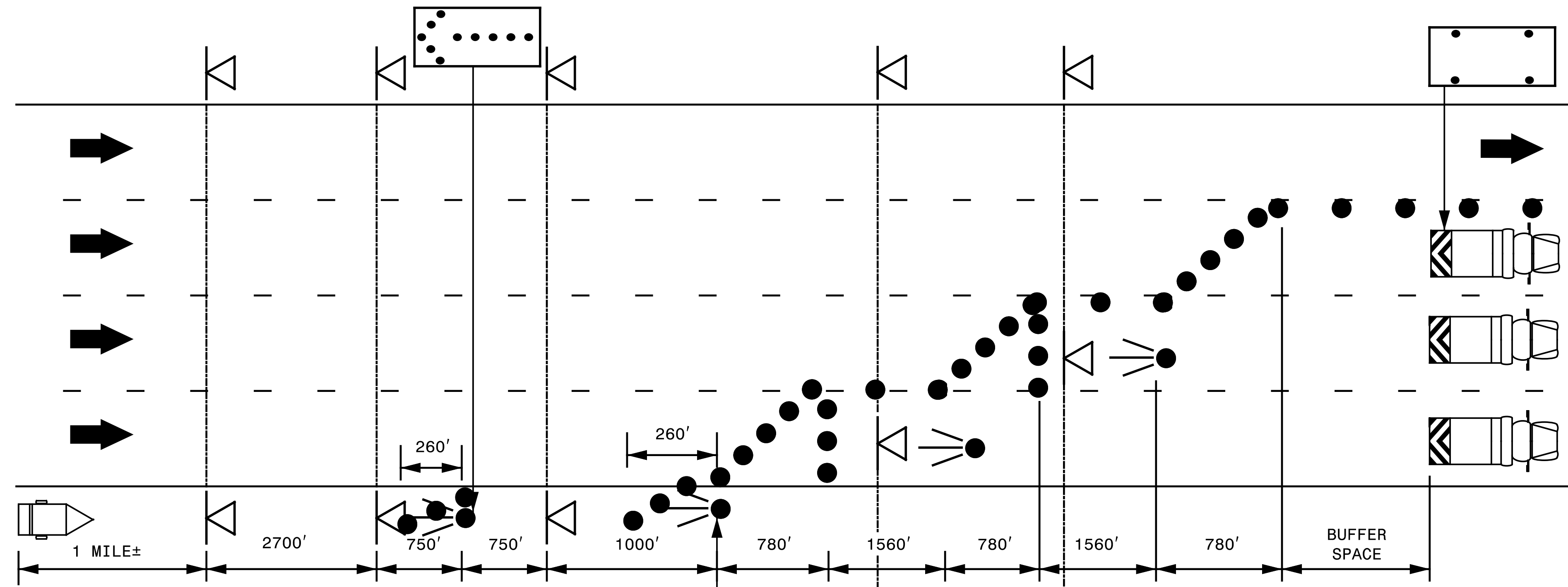
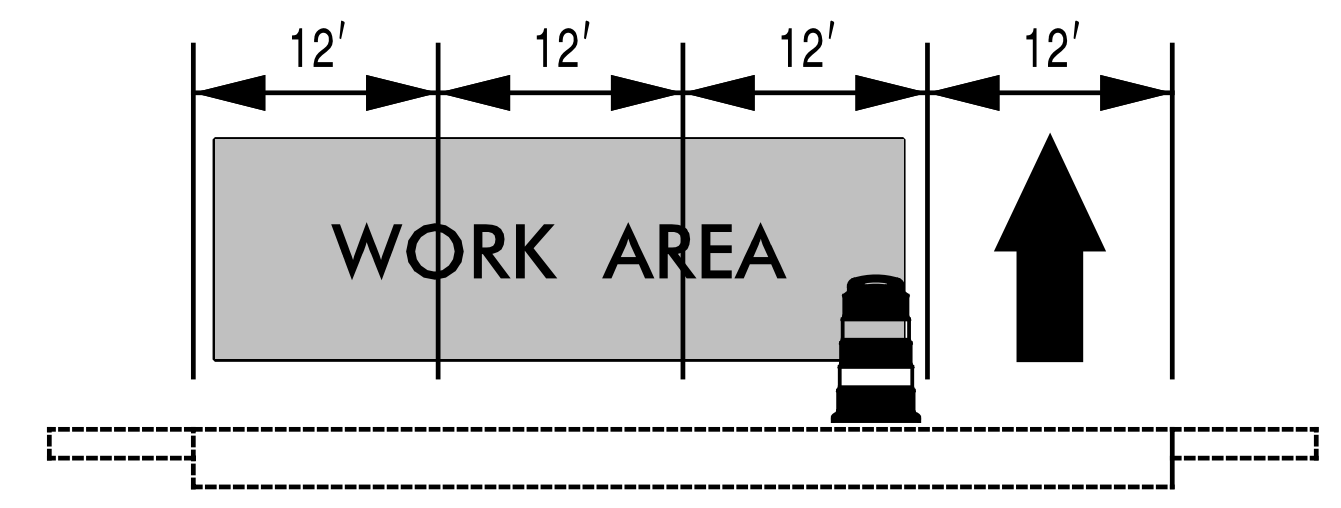
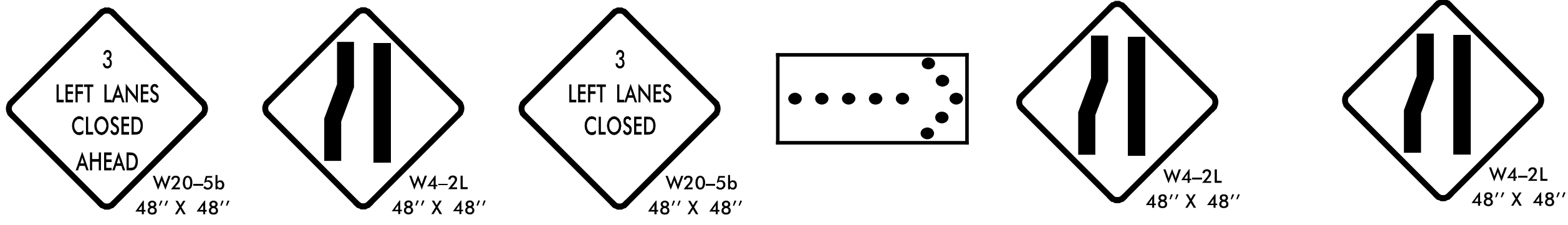
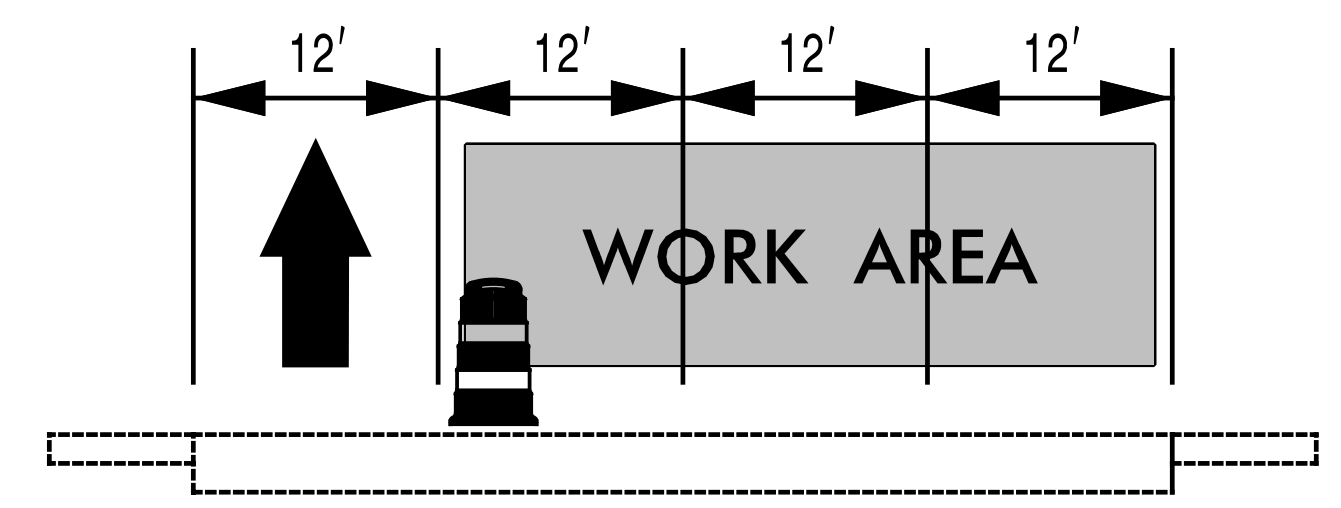
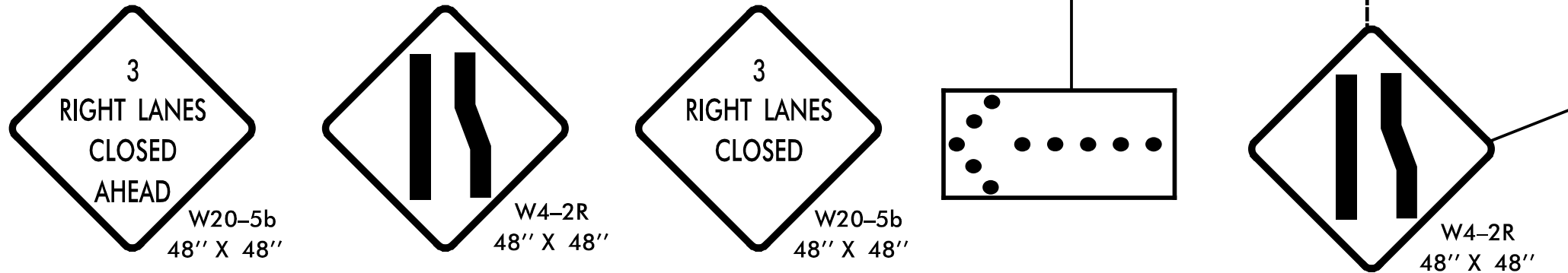


MESSAGE NO. 1	MESSAGE NO. 2
LEFT THREE LANES	CLOSED NEXT XX MILES
CHANGEABLE MESSAGE SIGN	



MESSAGE NO. 1	MESSAGE NO. 2
RIGHT THREE LANES	CLOSED NEXT XX MILES
CHANGEABLE MESSAGE SIGN	



10/24/2022 2:11:34 PM I:\Transportation\Projects\Scoping\I-5955\TMP\I-5955 TMP-2.dgn jbauman

SEPI
 1 Glenwood Avenue
 Raleigh, NC 27603
 Tel: 919.789.9977
 Fax: 919.789.9591
 License: C-2197

APPROVED: *Steve Miller*
DocuSigned by: Steve Miller 9F80C15CEEB48E
 DATE: _____
 SEAL

LANE CLOSURE TYPICAL