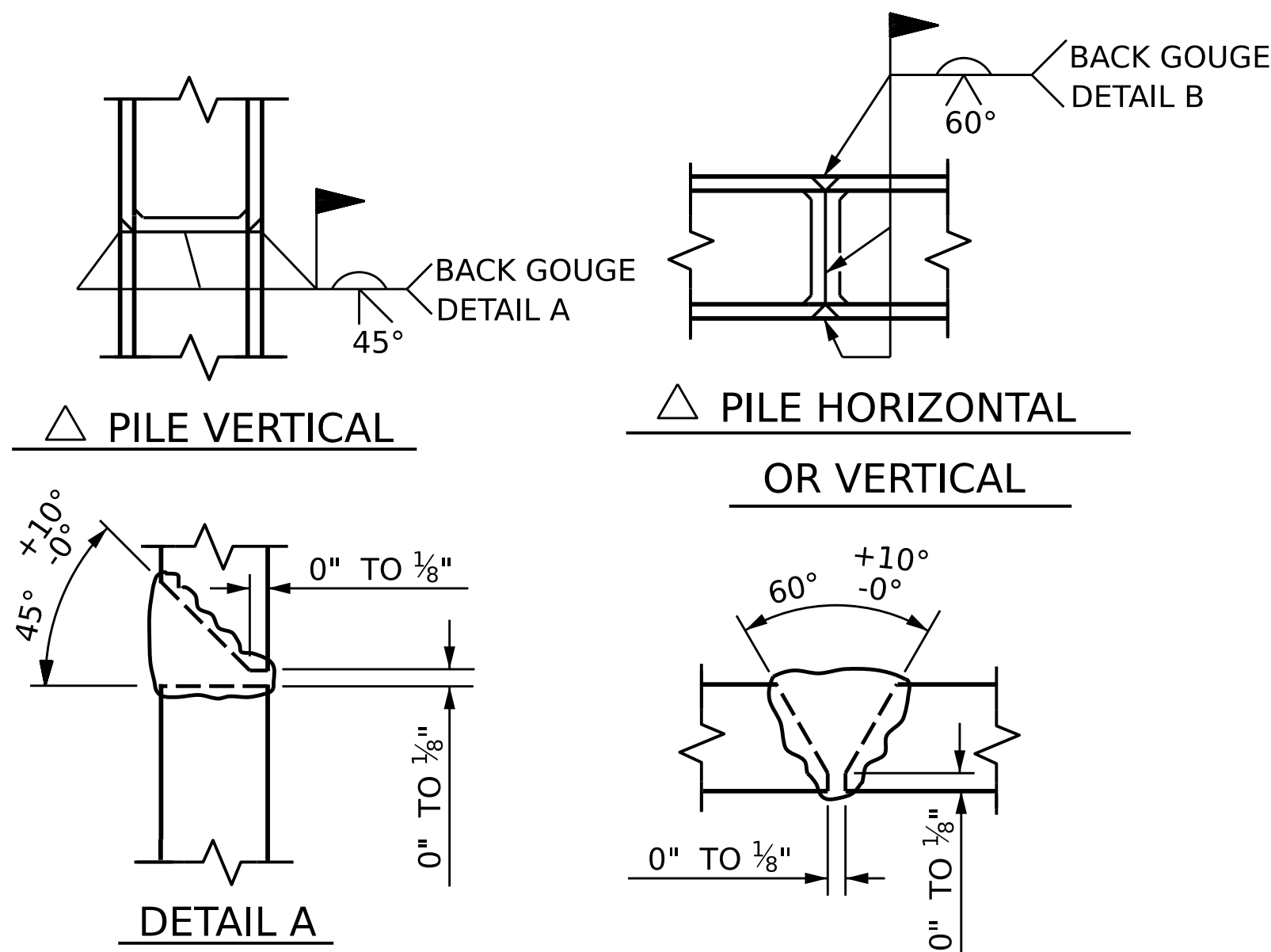


BAGGED STONE AND PIPE SHALL BE PLACED IMMEDIATELY AFTER COMPLETION OF END BENT EXCAVATION. PIPE MAY BE EITHER CONCRETE, CORRUGATED STEEL, CORRUGATED ALUMINUM ALLOY, OR CORRUGATED PLASTIC. PERFORATED PIPE WILL NOT BE ALLOWED.

BAGGED STONE SHALL REMAIN IN PLACE UNTIL THE ENGINEER DIRECTS THAT IT BE REMOVED. THE CONTRACTOR SHALL REMOVE AND DISPOSE OF SILT ACCUMULATIONS AT BAGGED STONE WHEN SO DIRECTED BY THE ENGINEER. BAGS SHALL BE REMOVED AND REPLACED WHENEVER THE ENGINEER DETERMINES THAT THEY HAVE DETERIORATED AND LOST THEIR EFFECTIVENESS.

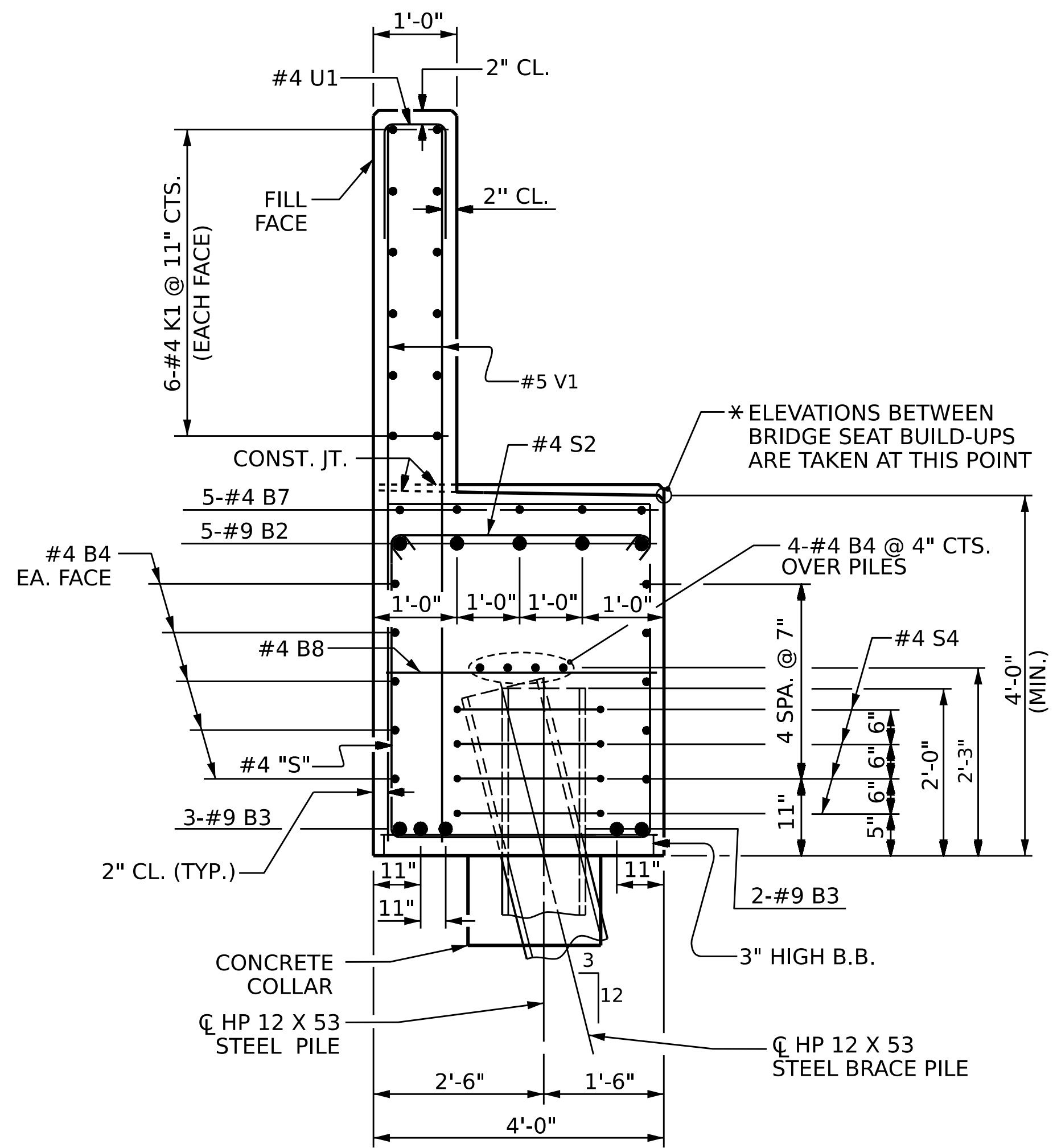
NO SEPARATE PAYMENT WILL BE MADE FOR THIS WORK AND THE ENTIRE COST OF THIS WORK SHALL BE INCLUDED IN THE UNIT CONTRACT PRICE BID FOR THE SEVERAL PAY ITEMS.

TEMPORARY DRAINAGE AT END BENT

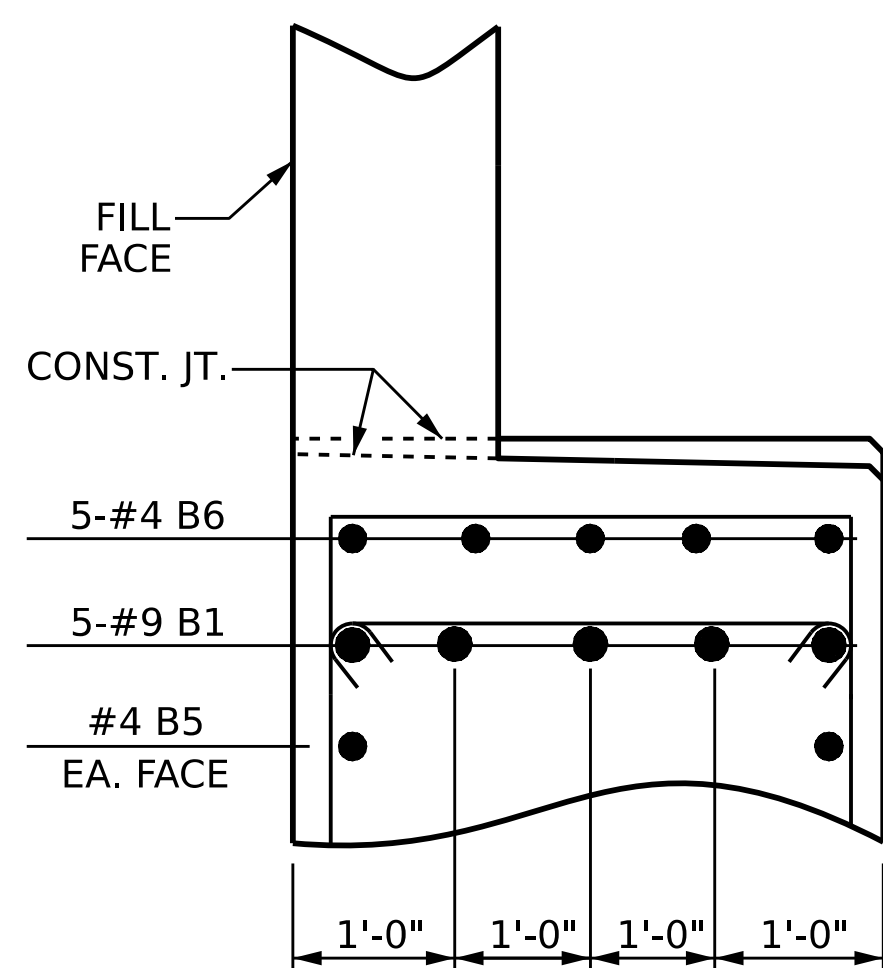


△ POSITION OF PILE DURING WELDING.

PILE SPLICE DETAILS

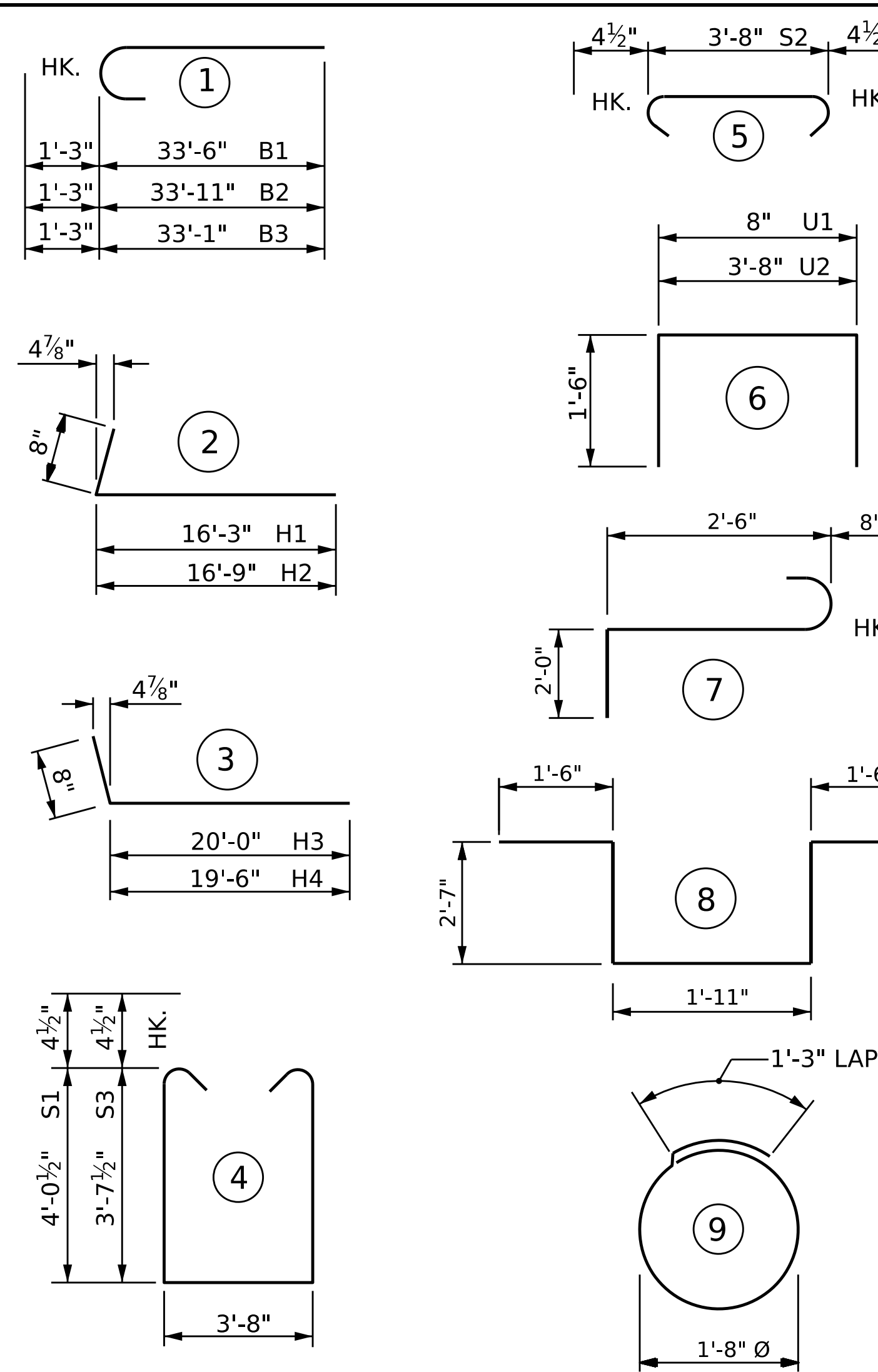


SECTION A-A



PARTIAL SECTION B-B

BAR TYPES



ALL BAR DIMENSIONS ARE OUT TO OUT

BILL OF MATERIAL

END BENT 2

| BAR | NO. | SIZE | TYPE | LENGTH | WEIGHT |
|-----|-----|------|------|---------|--------|
| B1 | 5 | #9 | 1 | 34'-9" | 591 |
| B2 | 5 | #9 | 1 | 35'-2" | 598 |
| B3 | 10 | #9 | 1 | 34'-4" | 1167 |
| B4 | 28 | #4 | STR | 32'-4" | 605 |
| B5 | 2 | #4 | STR | 30'-8" | 41 |
| B6 | 10 | #4 | STR | 17'-10" | 119 |
| B7 | 5 | #4 | STR | 10'-11" | 36 |
| B8 | 16 | #4 | STR | 3'-8" | 39 |
| H1 | 13 | #4 | 2 | 16'-11" | 147 |
| H2 | 13 | #4 | 2 | 17'-5" | 151 |
| H3 | 12 | #4 | 3 | 20'-8" | 166 |
| H4 | 12 | #4 | 3 | 20'-2" | 162 |
| K1 | 24 | #4 | STR | 32'-4" | 518 |
| K2 | 8 | #4 | STR | 4'-6" | 24 |
| S1 | 40 | #4 | 4 | 12'-6" | 334 |
| S2 | 73 | #4 | 5 | 4'-5" | 215 |
| S3 | 33 | #4 | 4 | 11'-8" | 257 |
| S4 | 32 | #4 | 9 | 6'-6" | 139 |
| S5 | 6 | #6 | 7 | 5'-2" | 47 |
| S6 | 6 | #6 | 8 | 10'-1" | 91 |
| U1 | 53 | #4 | 6 | 3'-8" | 130 |
| U2 | 31 | #4 | 6 | 6'-8" | 138 |
| V1 | 106 | #5 | STR | 8'-8" | 958 |
| V2 | 44 | #5 | STR | 11'-3" | 516 |
| V3 | 50 | #5 | STR | 10'-4" | 539 |

REINFORCING STEEL LBS. 7,728

| CLASS A CONCRETE | | | |
|-------------------------------|----------|------|--|
| POUR #1 | CU. YDS. | 51.5 | |
| (CAP, LOWER WINGS, & COLLARS) | | | |
| POUR #2 | CU. YDS. | 21.5 | |
| (UPPER WINGS & BACKWALL) | | | |
| TOTAL | CU. YDS. | 73.0 | |

PROJECT NO. BR-0094

ROCKINGHAM COUNTY

STATION: 20+38.70 -L-

SHEET 3 OF 3

STATE OF NORTH CAROLINA
DEPARTMENT OF TRANSPORTATION
RALEIGH

SUBSTRUCTURE

END BENT 2



Designed by
Francesca Lea
11/16/2022

DRAWN BY : Q. T. NGUYEN DATE : 08/2022
CHECKED BY : F. LEA DATE : 09/2022
DESIGN ENGINEER OF RECORD : F. LEA DATE : 09/2022

DOCUMENT NOT CONSIDERED
FINAL UNLESS ALL
SIGNATURES COMPLETED

| REVISIONS | | | SHEET NO. | | |
|-----------|-----|-------|-----------|-----|-------|
| NO. | BY: | DATE: | NO. | BY: | DATE: |
| 1 | | | 3 | | |
| 2 | | | 4 | | |

TOTAL SHEETS 30