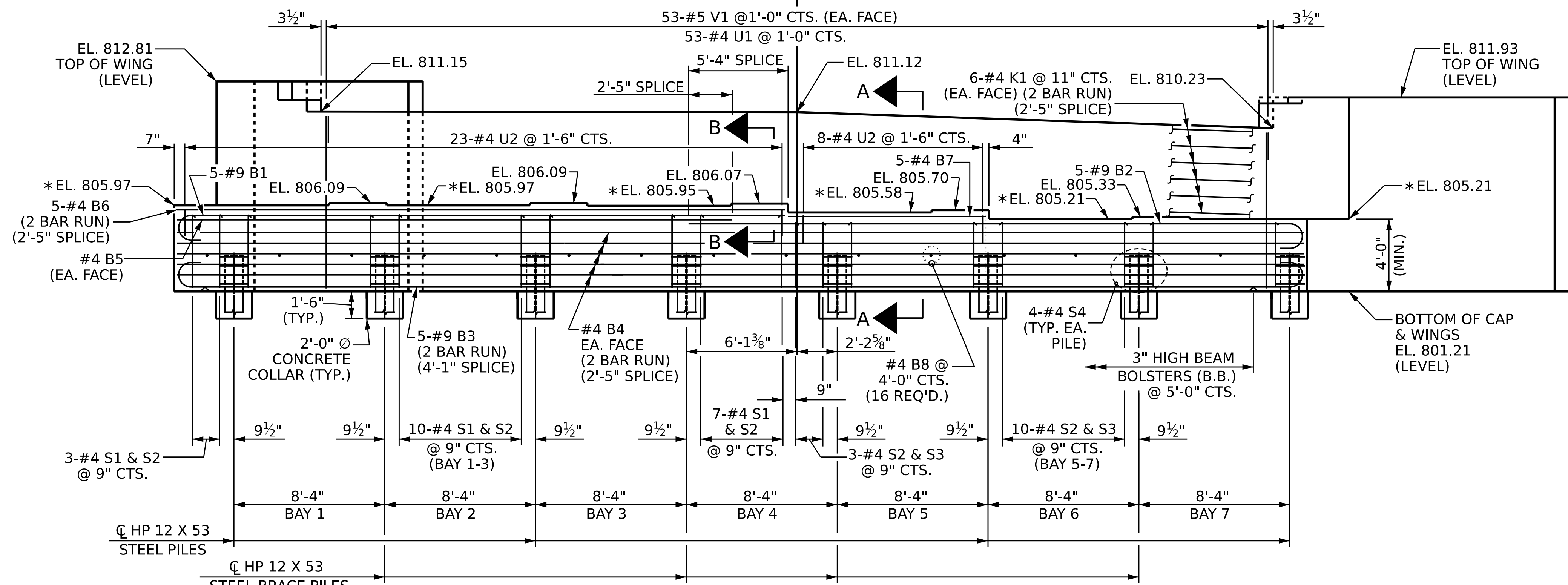


PLAN

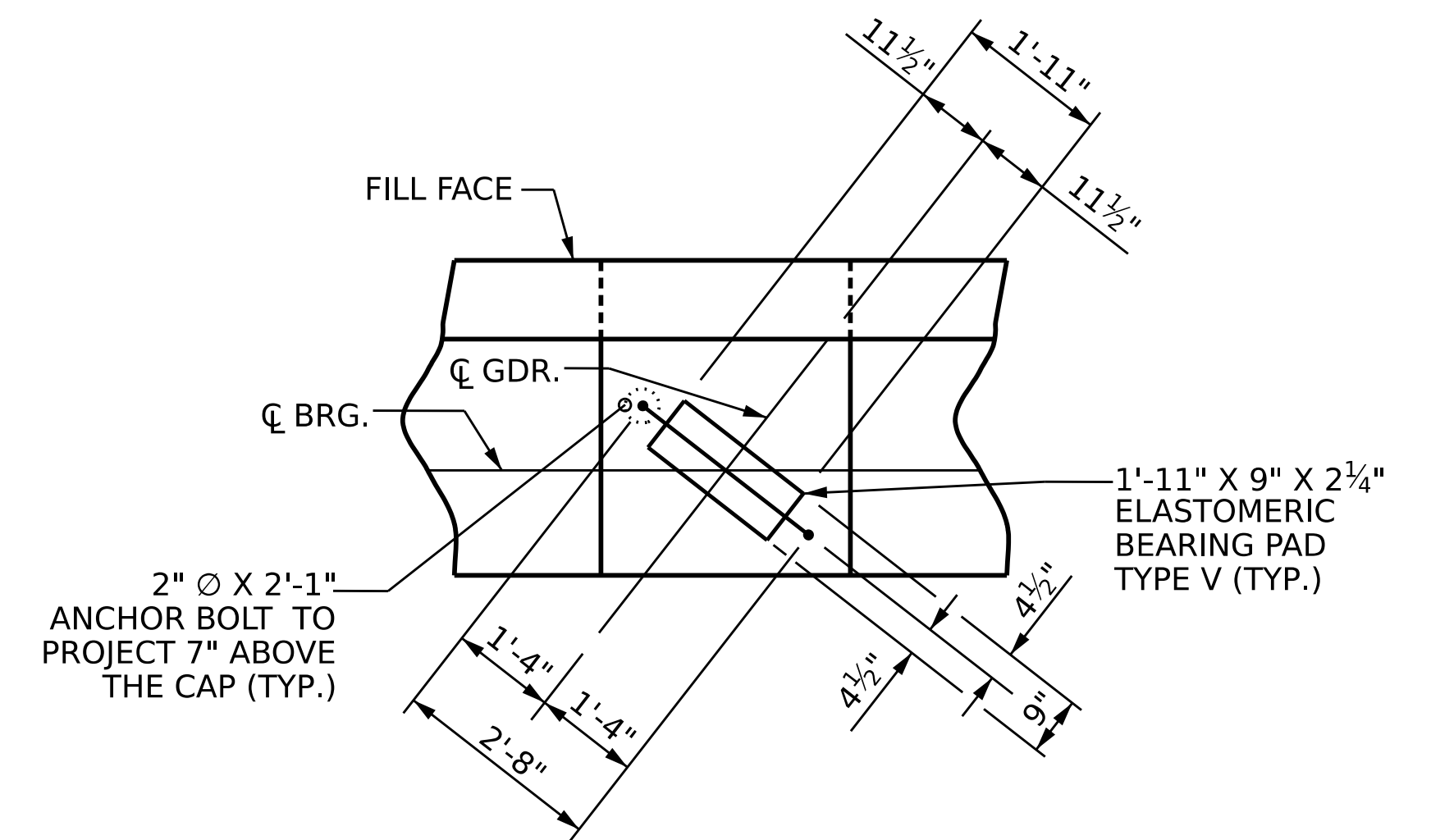


ELEVATION

(BRACE PILE IN WINGS NOT SHOWN FOR CLARITY)

NOTES

- * FOR LOCATION OF ELEVATION BETWEEN BRIDGE SEAT BUILDUPS, SEE SECTION A-A ON SHEET 3 OF 3.
- STIRRUPS AND U2 BARS IN CAP MAY BE SHIFTED AS NECESSARY TO CLEAR ANCHOR BOLTS.
- FOR PILE SPLICE DETAILS, SEE SHEET 3 OF 3.
- BACKWALL SHALL BE PLACED BEFORE APPLYING THE EPOXY PROTECTIVE COATING.
- THE TOP SURFACE AREAS OF THE END BENT CAPS SHALL BE CURED IN ACCORDANCE WITH THE STANDARD SPECIFICATIONS EXCEPT THE MEMBRANE CURING COMPOUND METHOD SHALL NOT BE USED.
- THE TOP SURFACE OF THE CAP EXCEPT THE BRIDGE SEAT BUILDUPS SHALL BE SLOPED TRANSVERSELY FROM THE FILL FACE TO THE BACK FACE AT THE RATE OF 2%.



DETAIL "A"

(TYP. EA. GDR.)

PROJECT NO. BR-0094
ROCKINGHAM COUNTY
 STATION: 20+38.70 -L-

SHEET 1 OF 3



STATE OF NORTH CAROLINA
 DEPARTMENT OF TRANSPORTATION
 RALEIGH

SUBSTRUCTURE
END BENT 2

DRAWN BY : Q. T. NGUYEN DATE : 08/2022
 CHECKED BY : F. LEA DATE : 09/2022
 DESIGN ENGINEER OF RECORD : F. LEA DATE : 09/2022

11/10/2022
 R:\Structures\Plans\401.047.BR0094.SMU.E*2.S25.780069.dgn
 ttnguyen1

DOCUMENT NOT CONSIDERED
 FINAL UNLESS ALL
 SIGNATURES COMPLETED

REVISIONS						SHEET NO. S-25
NO.	BY:	DATE:	NO.	BY:	DATE:	
1			3			TOTAL SHEETS 30
2			4			