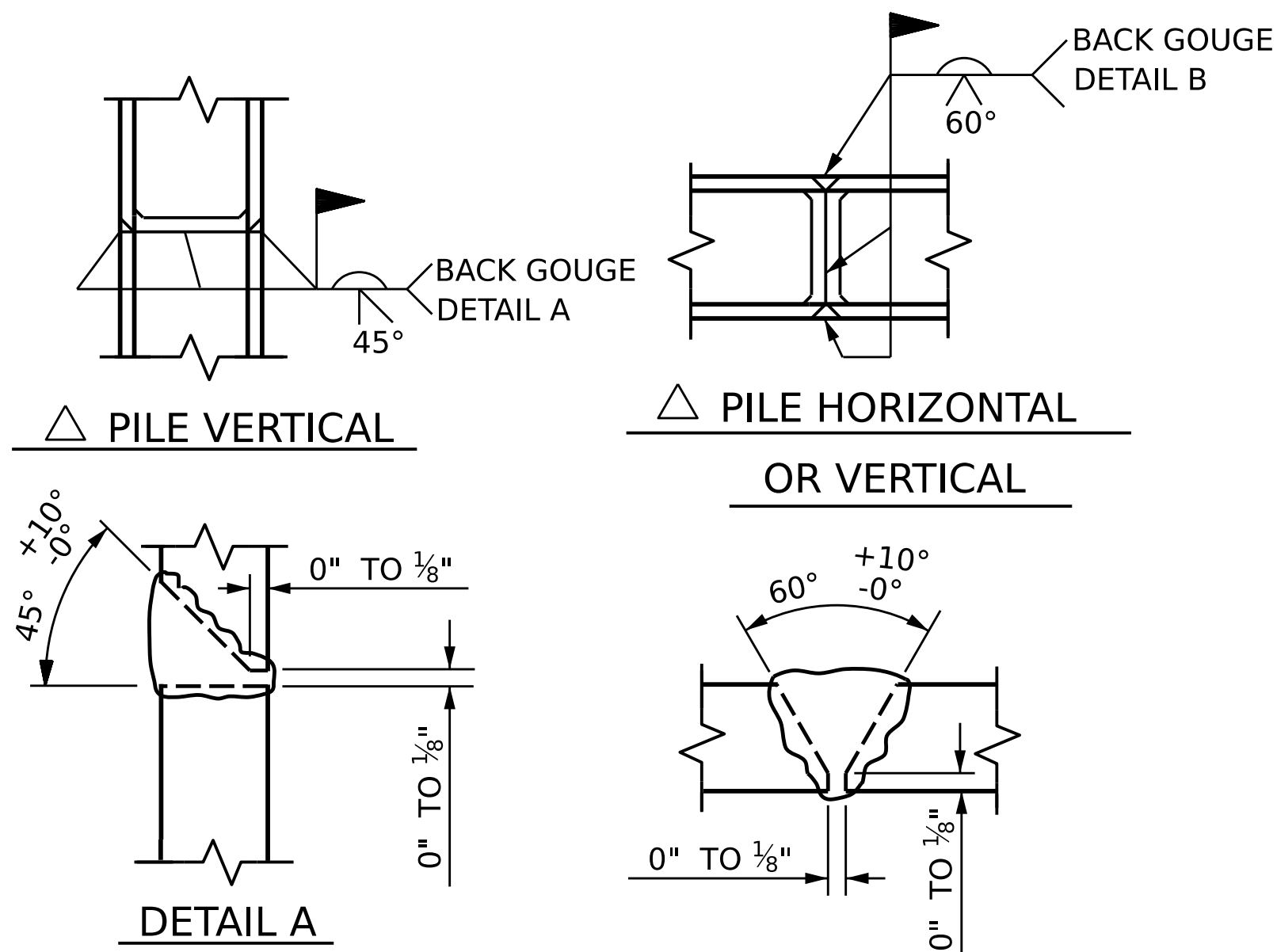


BAGGED STONE AND PIPE SHALL BE PLACED IMMEDIATELY AFTER COMPLETION OF END BENT EXCAVATION. PIPE MAY BE EITHER CONCRETE, CORRUGATED STEEL, CORRUGATED ALUMINUM ALLOY, OR CORRUGATED PLASTIC. PERFORATED PIPE WILL NOT BE ALLOWED.

BAGGED STONE SHALL REMAIN IN PLACE UNTIL THE ENGINEER DIRECTS THAT IT BE REMOVED. THE CONTRACTOR SHALL REMOVE AND DISPOSE OF SILT ACCUMULATIONS AT BAGGED STONE WHEN SO DIRECTED BY THE ENGINEER. BAGS SHALL BE REMOVED AND REPLACED WHENEVER THE ENGINEER DETERMINES THAT THEY HAVE DETERIORATED AND LOST THEIR EFFECTIVENESS.

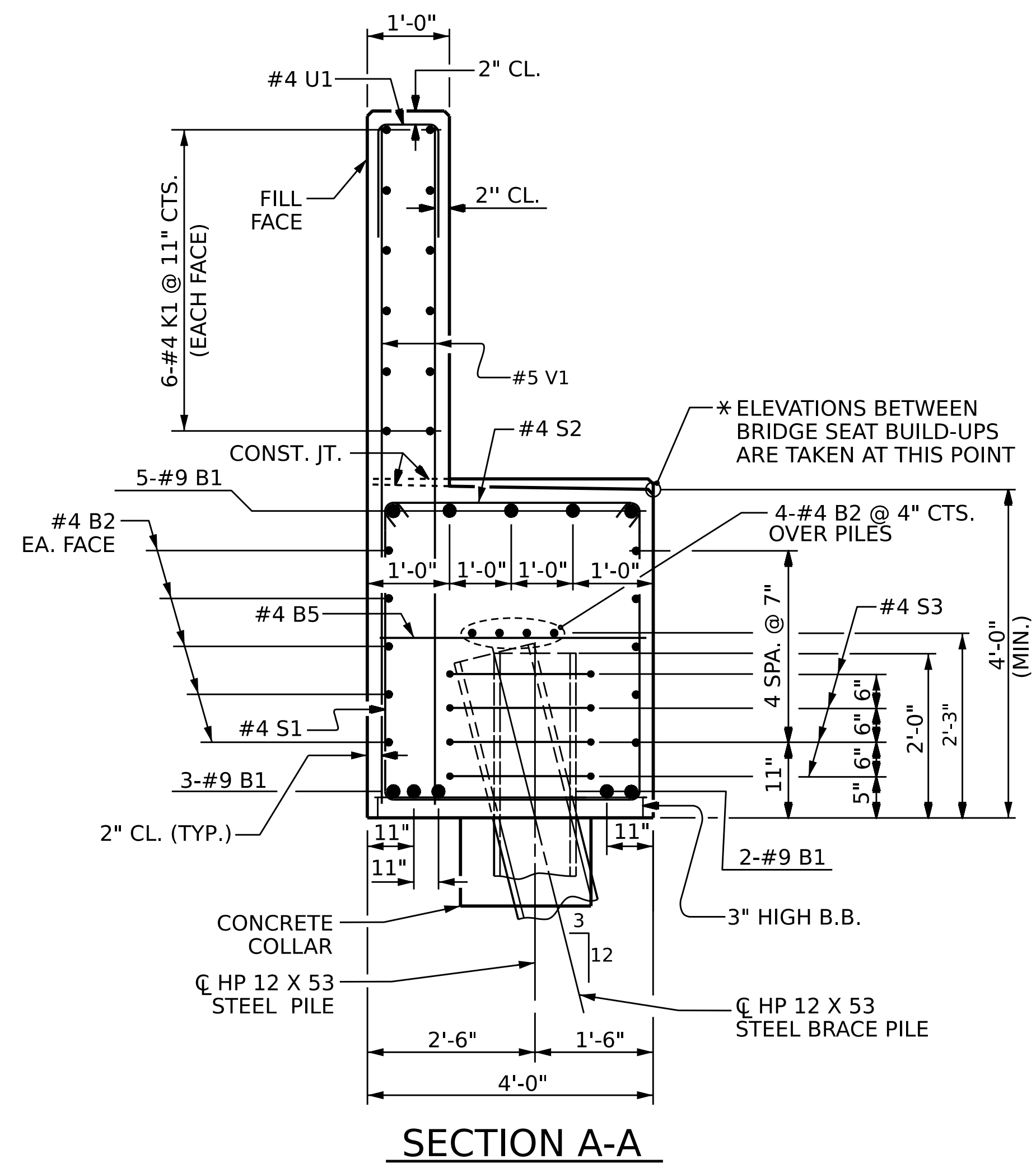
NO SEPARATE PAYMENT WILL BE MADE FOR THIS WORK AND THE ENTIRE COST OF THIS WORK SHALL BE INCLUDED IN THE UNIT CONTRACT PRICE BID FOR THE SEVERAL PAY ITEMS.

TEMPORARY DRAINAGE AT END BENT

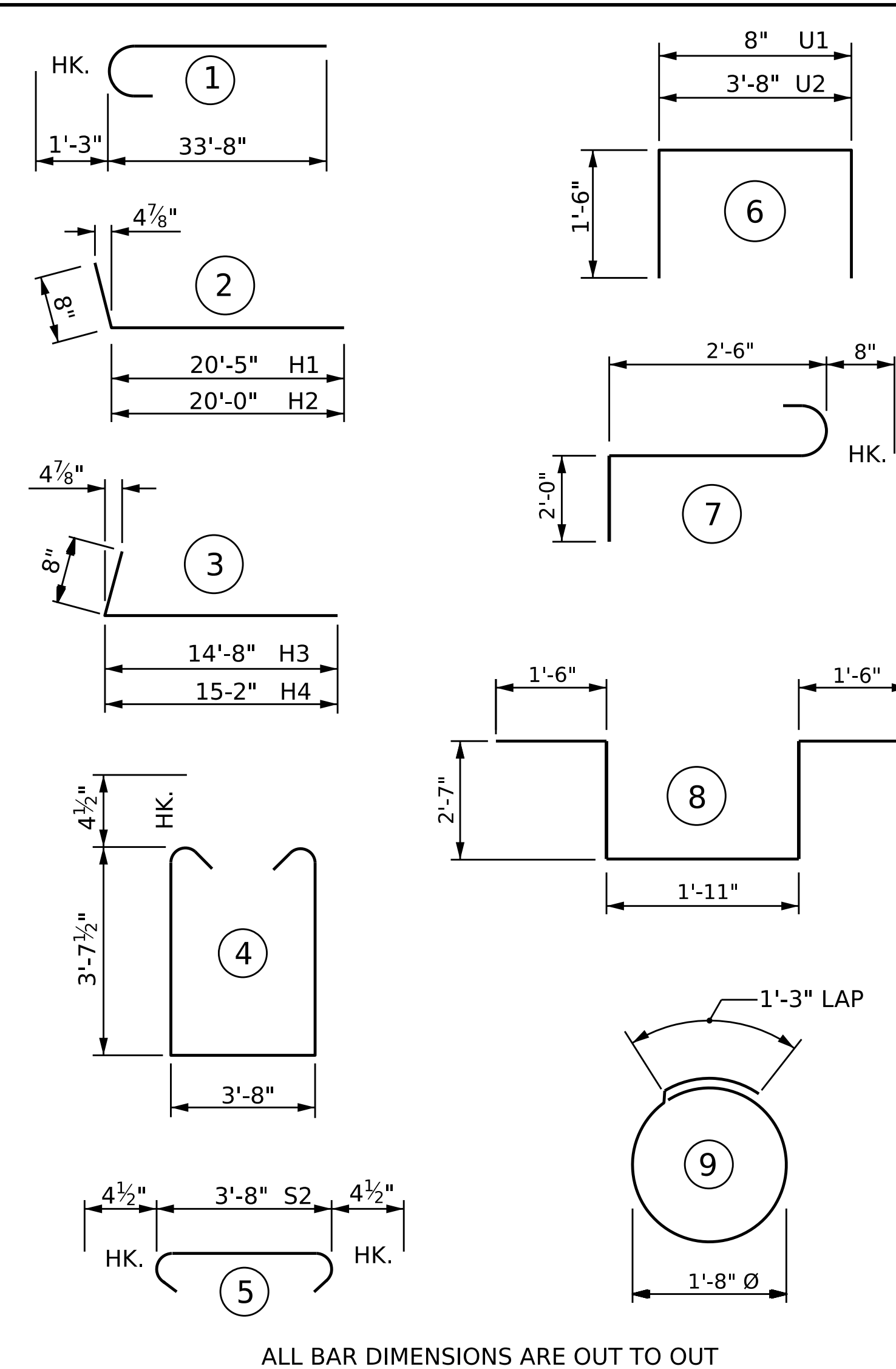


△ POSITION OF PILE DURING WELDING.

PILE SPLICE DETAILS



BAR TYPES



BILL OF MATERIAL

END BENT 1

BAR	NO.	SIZE	TYPE	LENGTH	WEIGHT
B1	20	#9	1	34'-11"	2374
B2	28	#4	STR	32'-4"	605
B3	10	#4	STR	2'-8"	18
B4	5	#4	STR	13'-11"	46
B5	16	#4	STR	3'-8"	39
H1	13	#4	2	21'-1"	183
H2	13	#4	2	20'-8"	179
H3	13	#4	3	15'-3"	133
H4	13	#4	3	15'-10"	137
K1	24	#4	STR	32'-4"	518
K2	8	#4	STR	4'-6"	24
S1	73	#4	4	11'-8"	569
S2	73	#4	5	4'-5"	215
S3	32	#4	9	6'-6"	139
S4	6	#6	7	5'-2"	47
S5	6	#6	8	10'-1"	91
U1	53	#4	6	3'-8"	130
U2	18	#4	6	6'-8"	80
V1	106	#5	STR	8'-10"	977
V2	92	#5	STR	10'-6"	1008

REINFORCING STEEL LBS. 7,513

CLASS A CONCRETE

POUR #1 CU. YDS. 47.8
(CAP, LOWER WINGS, & COLLARS)

POUR #2 CU. YDS. 21.2
(UPPER WINGS & BACKWALL)

TOTAL CU. YDS. 69.0

PROJECT NO. BR-0094

ROCKINGHAM COUNTY

STATION: 20+38.70 -L-

SHEET 3 OF 3



DocuSigned by:
Francesca Lea
B79DA865084EF
11/16/2022

STATE OF NORTH CAROLINA
DEPARTMENT OF TRANSPORTATION
RALEIGH

SUBSTRUCTURE

END BENT 1

REVISIONS

NO.	BY:	DATE:	NO.	BY:	DATE:	SHEET NO.
1			3			S-22
2			4			TOTAL SHEETS 30

DOCUMENT NOT CONSIDERED FINAL UNLESS ALL SIGNATURES COMPLETED

DRAWN BY: Q. T. NGUYEN DATE: 08/2022
CHECKED BY: F. LEA DATE: 09/2022
DESIGN ENGINEER OF RECORD: F. LEA DATE: 09/2022