

PLAN

NOTES

* FOR LOCATION OF ELEVATION BETWEEN BRIDGE SEAT BUILDUPS, SEE SECTION A-A ON SHEET 3 OF 3.

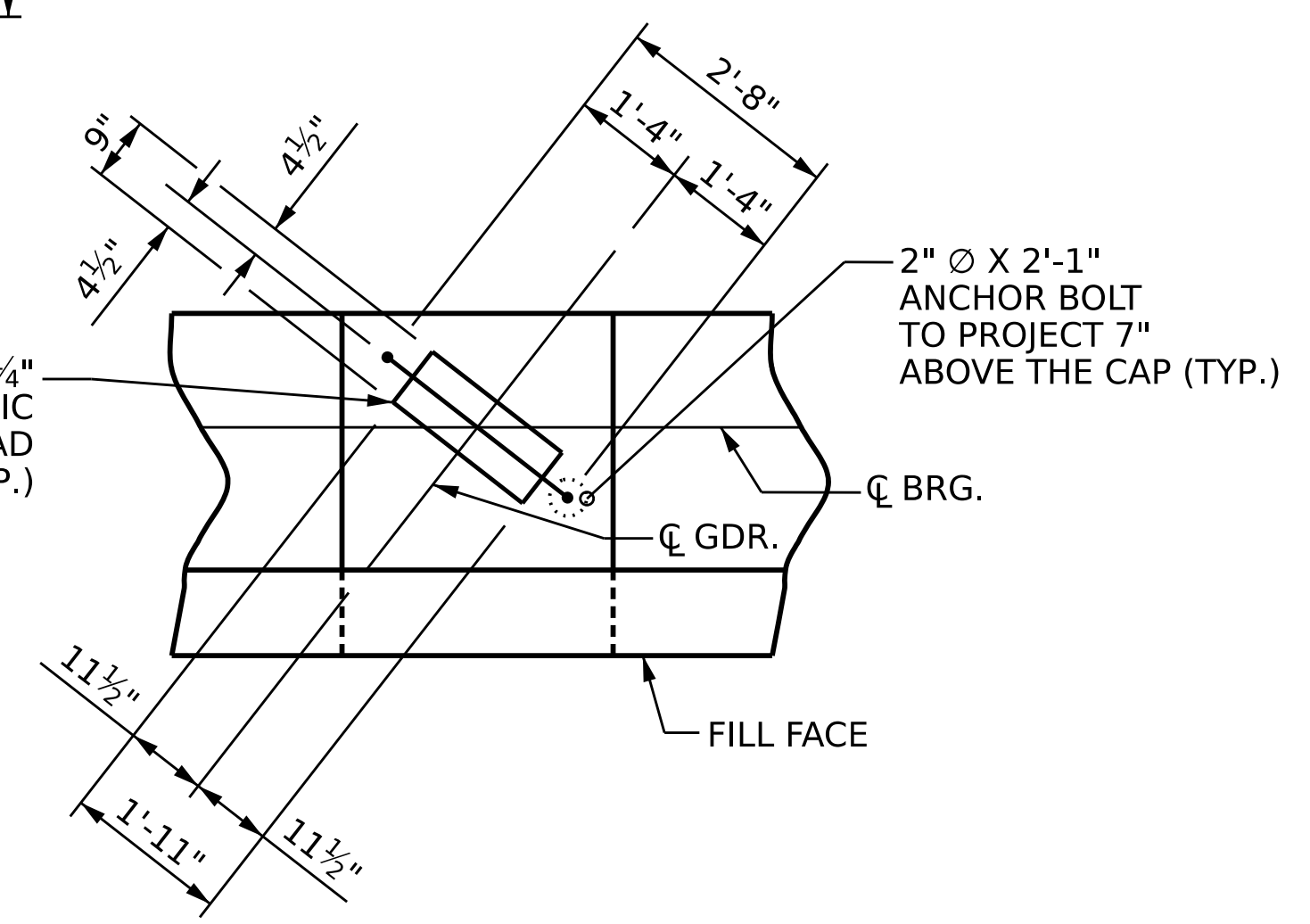
STIRRUPS AND U2 BARS IN CAP MAY BE SHIFTED AS NECESSARY TO CLEAR ANCHOR BOLTS.

FOR PILE SPLICE DETAILS, SEE SHEET 3 OF 3.

BACKWALL SHALL BE PLACED BEFORE APPLYING THE EPOXY PROTECTIVE COATING.

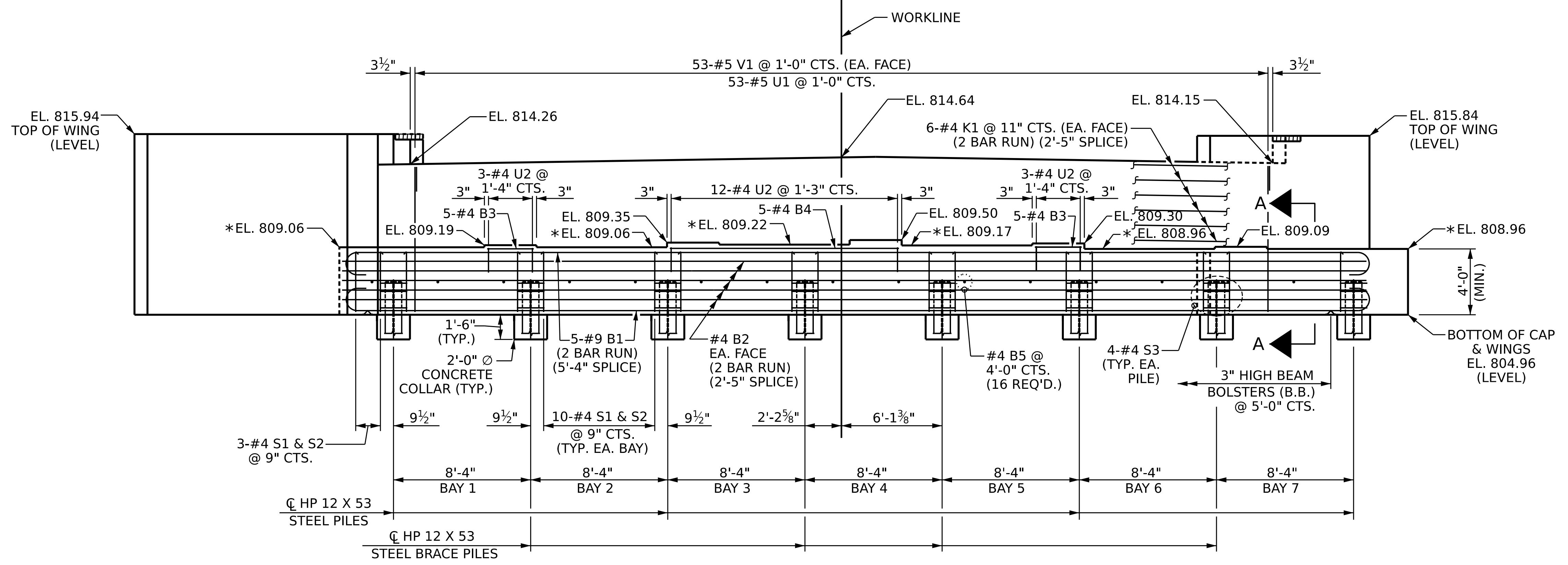
THE TOP SURFACE AREAS OF THE END BENT CAPS SHALL BE CURED IN ACCORDANCE WITH THE STANDARD SPECIFICATIONS EXCEPT THE MEMBRANE CURING COMPOUND METHOD SHALL NOT BE USED.

THE TOP SURFACE OF THE CAP EXCEPT THE BRIDGE SEAT BUILDUPS SHALL BE SLOPED TRANSVERSELY FROM THE FILL FACE TO THE BACK FACE AT THE RATE OF 2%.



DETAIL "A"

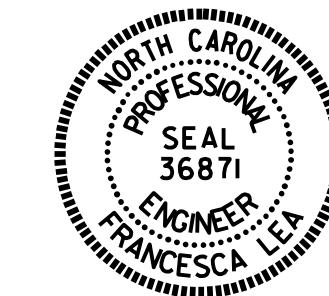
(TYP. EA. GDR.)



ELEVATION

(BRACE PILE IN WINGS NOT SHOWN FOR CLARITY)

PROJECT NO. BR-0094
 ROCKINGHAM COUNTY
 STATION: 20+38.70 -L-
 SHEET 1 OF 3



STATE OF NORTH CAROLINA
 DEPARTMENT OF TRANSPORTATION
 RALEIGH
 SUBSTRUCTURE
 END BENT 1

DRAWN BY : Q. T. NGUYEN DATE : 08/2022
 CHECKED BY : F. LEA DATE : 09/2022
 DESIGN ENGINEER OF RECORD : F. LEA DATE : 09/2022

REVISIONS		SHEET NO.	
NO.	BY	DATE	S-20
1			TOTAL SHEETS
2			30

DOCUMENT NOT CONSIDERED FINAL UNLESS ALL SIGNATURES COMPLETED

11/10/2022 R:\Structures\Plans\401.037.BR0094.SMU.E*1.S20.780069.dgn tnguyenl