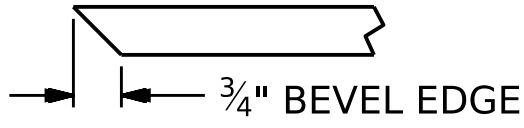
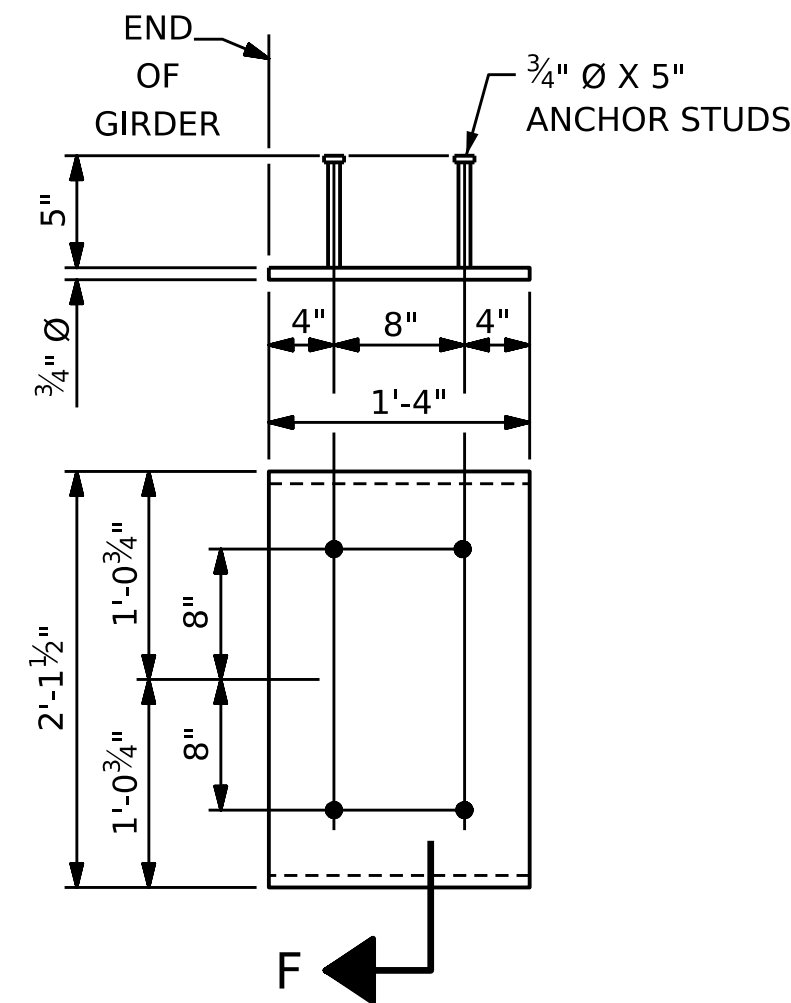


DETAIL "C"

(FOR 63" MODIFIED BULB TEES)

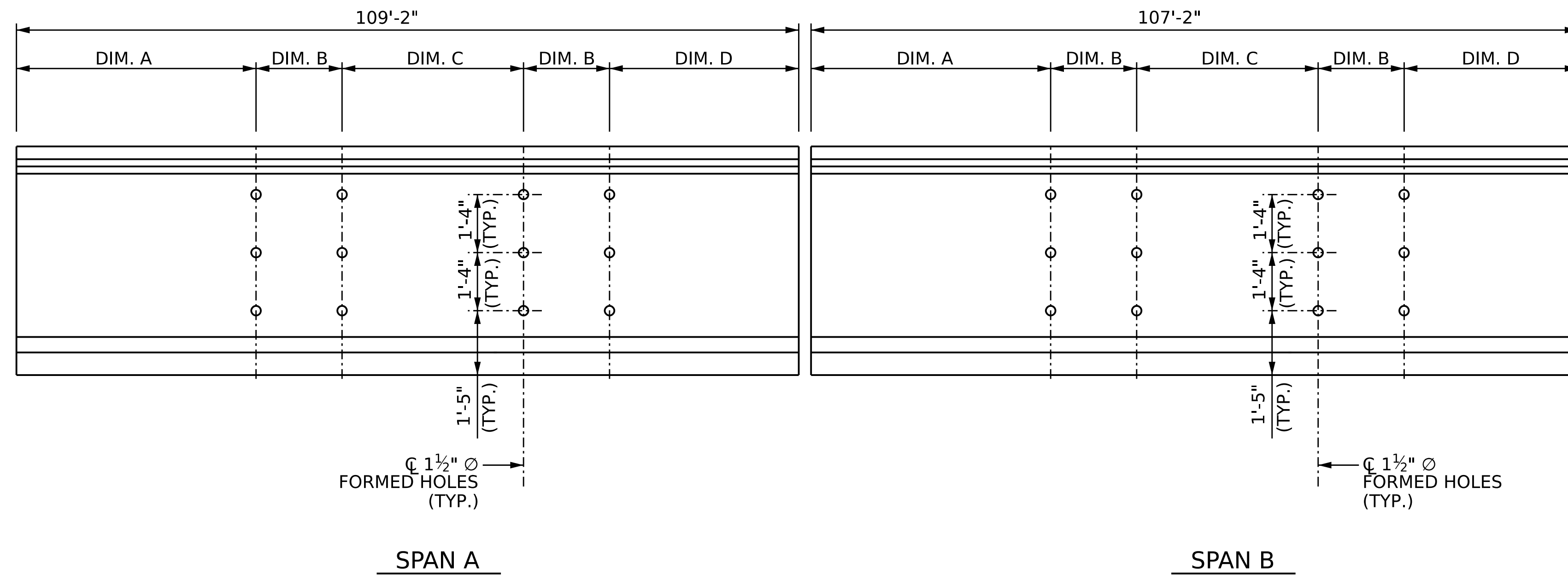


SECTION "F"

(SEE NOTES)

EMBEDDED PLATE "B-1" DETAILS FOR 63" MODIFIED BULB TEES

(2 REQ'D PER GIRDER)



LOCATION OF 1 1/2" Ø FORMED HOLE FOR TYPICAL INTERMEDIATE DIAPHRAGMS

NOTES

ALL PRESTRESSING STRANDS SHALL BE 7-WIRE LOW-RELAXATION GRADE 270 STRANDS AND SHALL CONFORM TO AASHTO M203 EXCEPT FOR SAMPLING REQUIREMENTS WHICH SHALL BE IN ACCORDANCE WITH THE STANDARD SPECIFICATIONS.

ALL REINFORCING STEEL SHALL BE GRADE 60.

APPLY EPOXY PROTECTIVE COATING TO END OF GIRDER SURFACES INDICATED IN ELEVATION VIEW.

EMBEDDED PLATE "B-1" SHALL BE GALVANIZED IN ACCORDANCE WITH THE STANDARD SPECIFICATIONS.

ANCHOR STUDS SHALL CONFORM TO AASHTO M169 GRADES 1010 THROUGH 1020 OR APPROVED EQUAL, AND SHALL MEET THE TYPE "B" REQUIREMENTS OF SUBSECTION 7.3 OF THE ANSI/AASHTO/AWS D1.5 BRIDGE WELDING CODE.

AT ENDS OF GIRDERS TO BE EMBEDDED IN CONCRETE DIAPHRAGMS OR END WALLS, PRESTRESSING STRANDS MAY EXTEND A MAXIMUM OF 2" BEYOND THE GIRDER ENDS. OTHERWISE, PRESTRESSING STRANDS SHALL BE CUT FLUSH WITH THE GIRDER ENDS.

THE TRANSFER OF LOAD FROM THE ANCHORAGES TO THE GIRDER SHALL BE DONE WHEN CONCRETE HAS REACHED A COMPRESSIVE STRENGTH OF NOT LESS THAN 7200 PSI.

DEPENDING ON THE TYPE OF SYSTEM USED TO SUPPORT THE DECK SLAB FORMS, PRESET ANCHORS MAY BE NECESSARY IN THE PRESTRESSED CONCRETE GIRDER.

THE TOP SURFACE OF THE GIRDER, EXCLUDING THE OUTSIDE 4" AND LINK SLAB AREAS, SHALL BE RAKED TO A DEPTH OF 1/4".

A 2" x 2" CHAMFER IS ALLOWED AT THE INTERSECTION OF THE WEB AND THE BOTTOM FLANGE OF THE 63" MODIFIED BULB TEES ONLY.

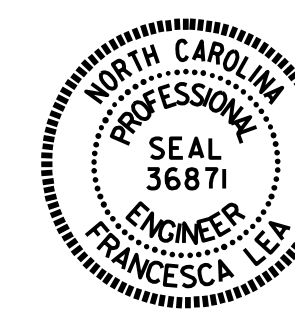
THE CONTRACTOR HAS THE OPTION TO PROVIDE, AT NO ADDITIONAL COST TO THE DEPARTMENT, 2 ADDITIONAL STRANDS AT THE TOP OF THE GIRDER TO FACILITATE TYING OF THE REINFORCING STEEL. THESE STRANDS SHALL BE PULLED TO A LOAD OF 4500 lbs.

FOR GIRDER CLIP DETAIL, SEE "TYPICAL SECTION" SHEET.

	GIRDER	DIM. A	DIM. B	DIM. C	DIM. B	DIM. D
SPAN A	1	40'-0 ⁷ / ₁₆ "	-	35'-11"	-	33'-2 ¹ / ₂ "
SPAN A	2-4	33'-2 ⁹ / ₁₆ "	6'-9 ¹³ / ₁₆ "	29'-1 ³ / ₁₆ "	6'-9 ¹³ / ₁₆ "	33'-2 ¹ / ₂ "
SPAN A	5	33'-2 ⁹ / ₁₆ "	-	35'-11"	-	40'-0 ³ / ₈ "
SPAN B	1	39'-4 ³ / ₈ "	-	35'-3"	-	32'-6 ⁹ / ₁₆ "
SPAN B	2-4	32'-6 ¹ / ₂ "	6'-9 ¹³ / ₁₆ "	28'-5 ³ / ₁₆ "	6'-9 ¹³ / ₁₆ "	32'-6 ⁹ / ₁₆ "
SPAN B	5	32'-6 ¹ / ₂ "	-	35'-3"	-	39'-4 ⁷ / ₁₆ "

PROJECT NO. BR-0094
ROCKINGHAM COUNTY
 STATION: 20+38.70 -L-

SHEET 3 OF 3



Designed by
 Francesca Lea
 879DADB6584EF
 11/21/2022

STATE OF NORTH CAROLINA
 DEPARTMENT OF TRANSPORTATION
 RALEIGH
 STANDARD
 PRESTRESSED CONCRETE GIRDER
 CONTINUOUS FOR LIVE LOAD
 DETAILS

ASSEMBLED BY :	Q. T. NGUYEN	DATE :	08/2022
CHECKED BY :	F. LEA	DATE :	09/2022
DRAWN BY :	ELR 11/91	REV. 1/15	MAA/TMG
CHECKED BY :	GRP 11/91	REV. 2/15	MAA/TMG
		REV. 12/17	MAA/THC

DOCUMENT NOT CONSIDERED
 FINAL UNLESS ALL
 SIGNATURES COMPLETED

REVISIONS						SHEET NO.
NO.	BY:	DATE:	NO.	BY:	DATE:	S-13
1			3			TOTAL SHEETS
2			4			30