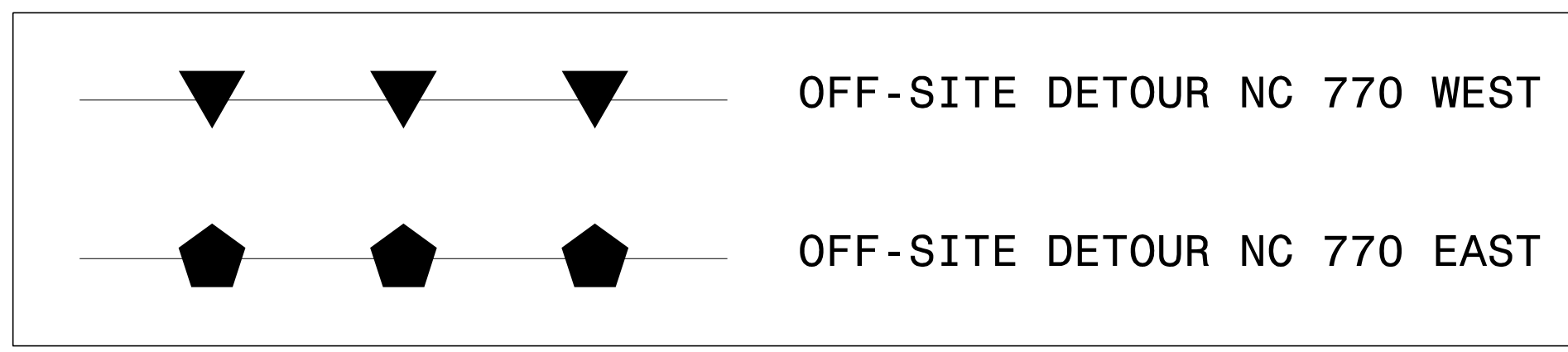
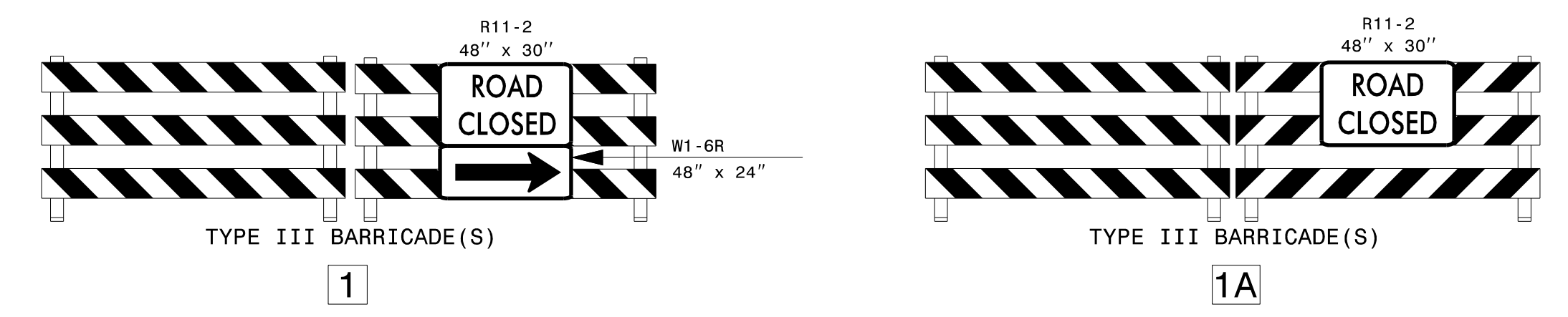
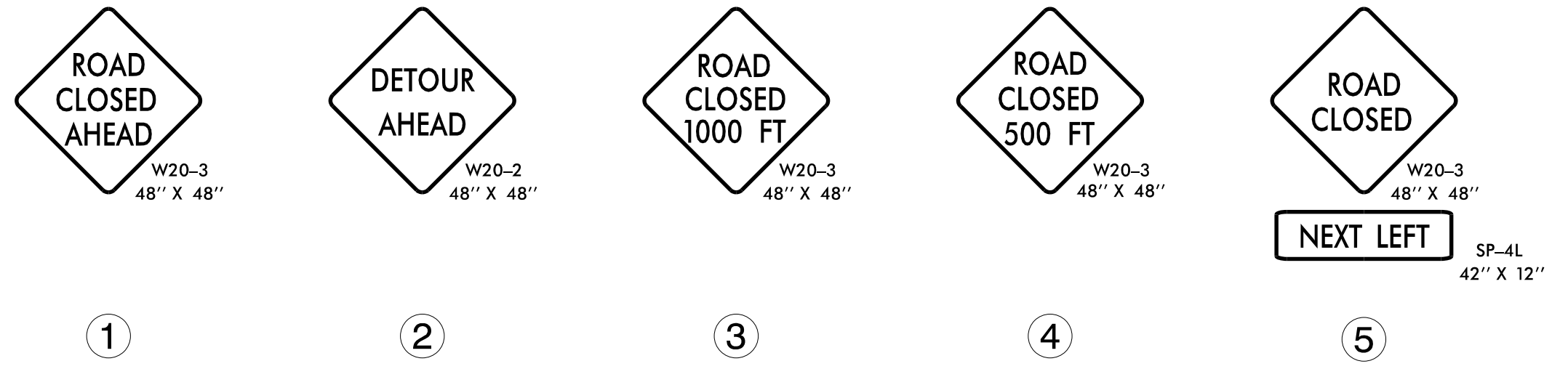
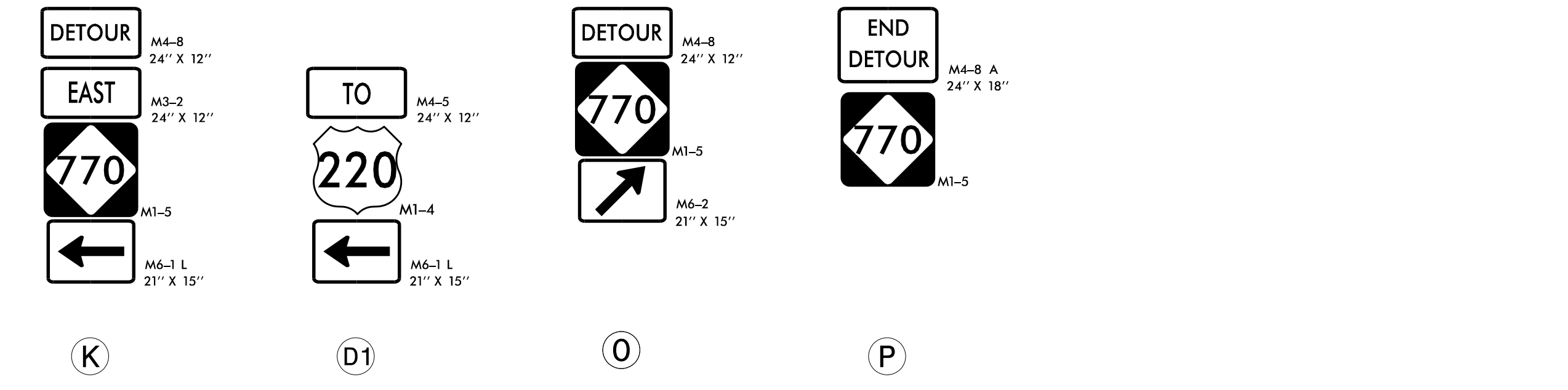
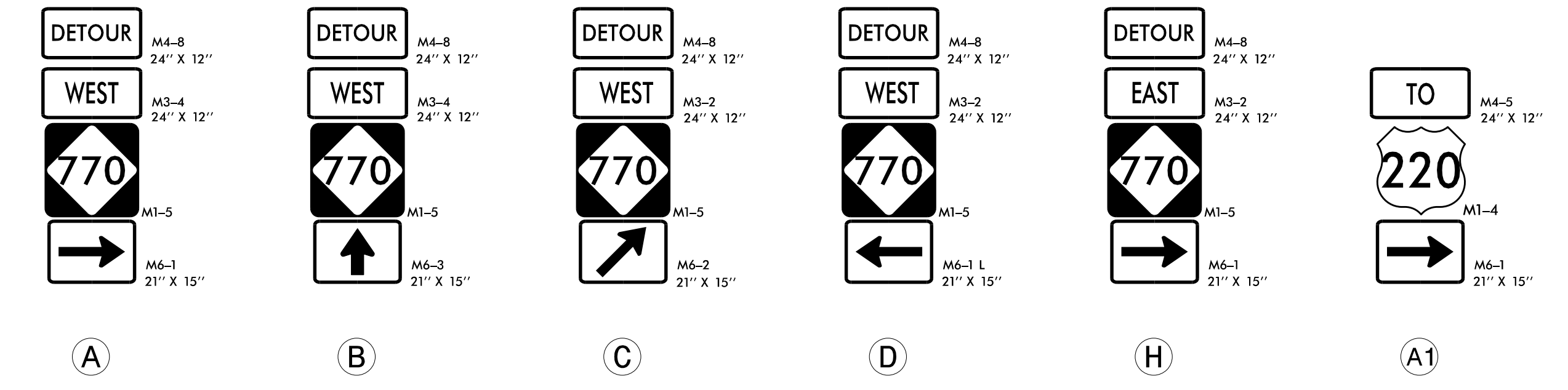
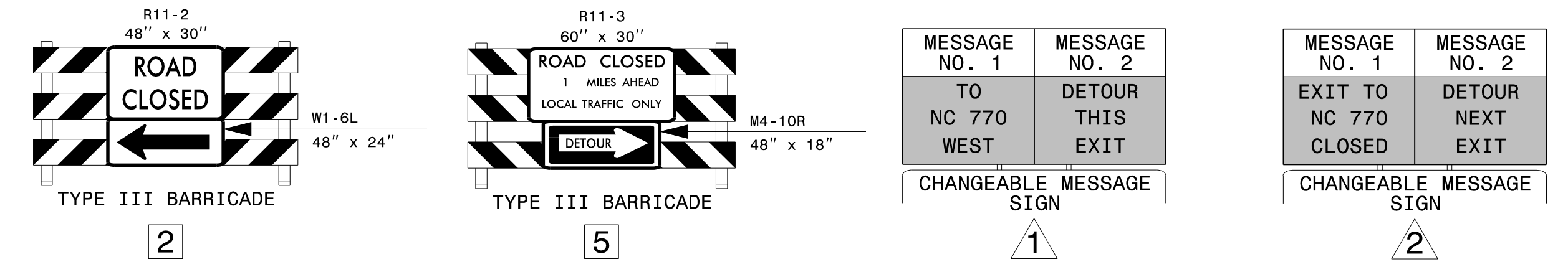


* DENOTES EXISTING DETOUR SIGN FROM TMP-2B



NOTE:
 IMPLEMENT US 220/NC 770 RAMP CLOSURES ONE PAIR OF RAMPS AT A TIME.
 COVER ANY CONFLICTING DETOUR SIGNAGE FROM TMP-2B.



10/27/2022
 P:\TipProjects\BR0094\TrafficControl\BR0094_TC_TMP_2D_Off-site_Detour_220_SB_Ramps_Closure.dgn
 User: jdbaverl

APPROVED: <i>Kenneth C. Thornwell, Jr., P.E.</i> DATE: 10/27/2022 SEAL NORTH CAROLINA PROFESSIONAL ENGINEER SEAL 044089 KENNETH C. THORNWELL, JR. ENGINEER	DIVISION OF HIGHWAYS NORTH CAROLINA DEPARTMENT OF TRANSPORTATION WORK ZONE TRAFFIC CONTROL	US 220 SB RAMP CLOSURES OFF-SITE DETOUR
DOCUMENT NOT CONSIDERED FINAL UNLESS ALL SIGNATURES COMPLETED		