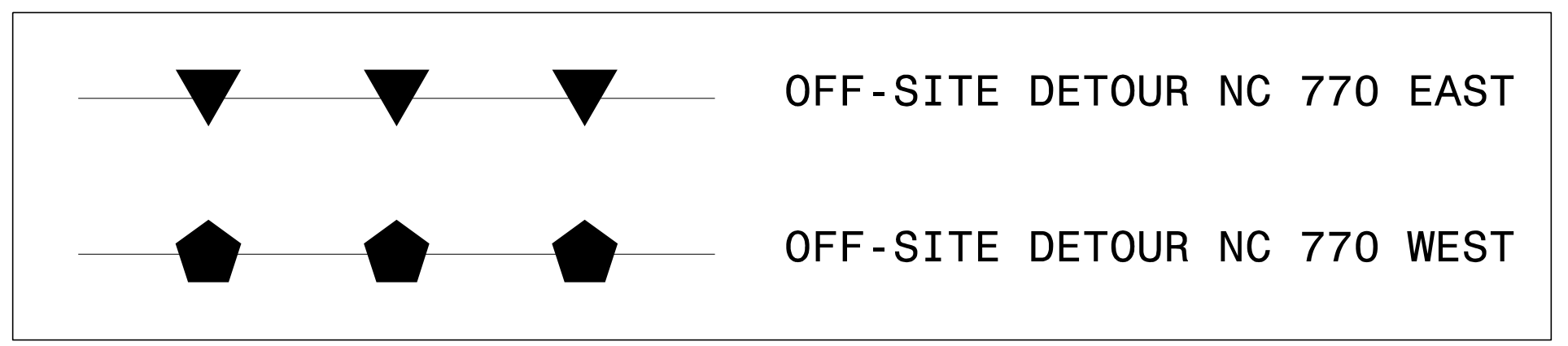
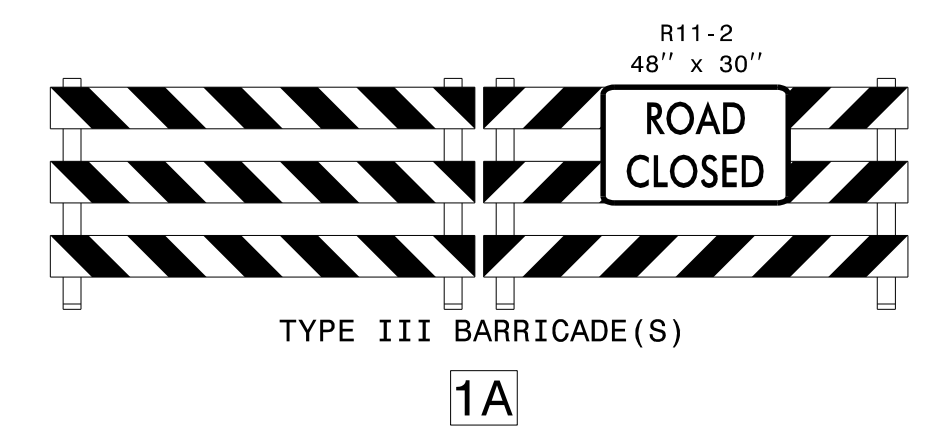
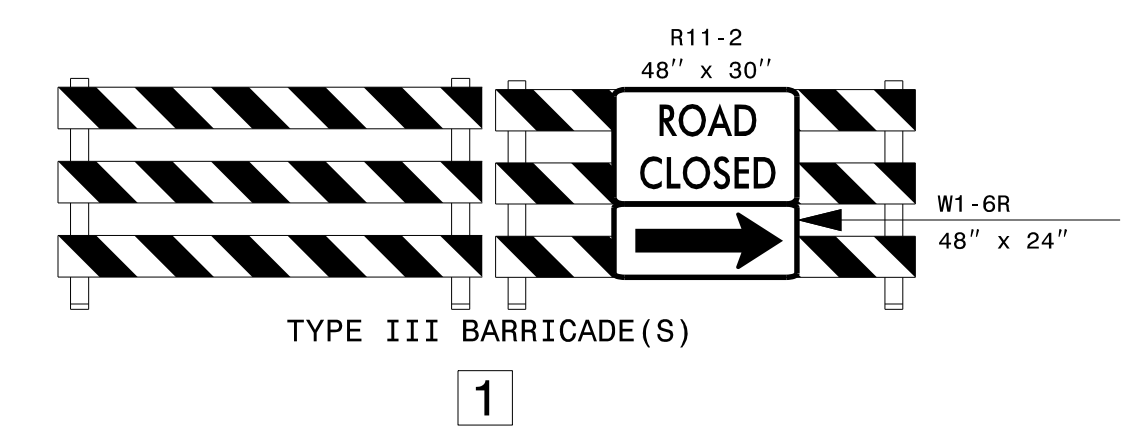
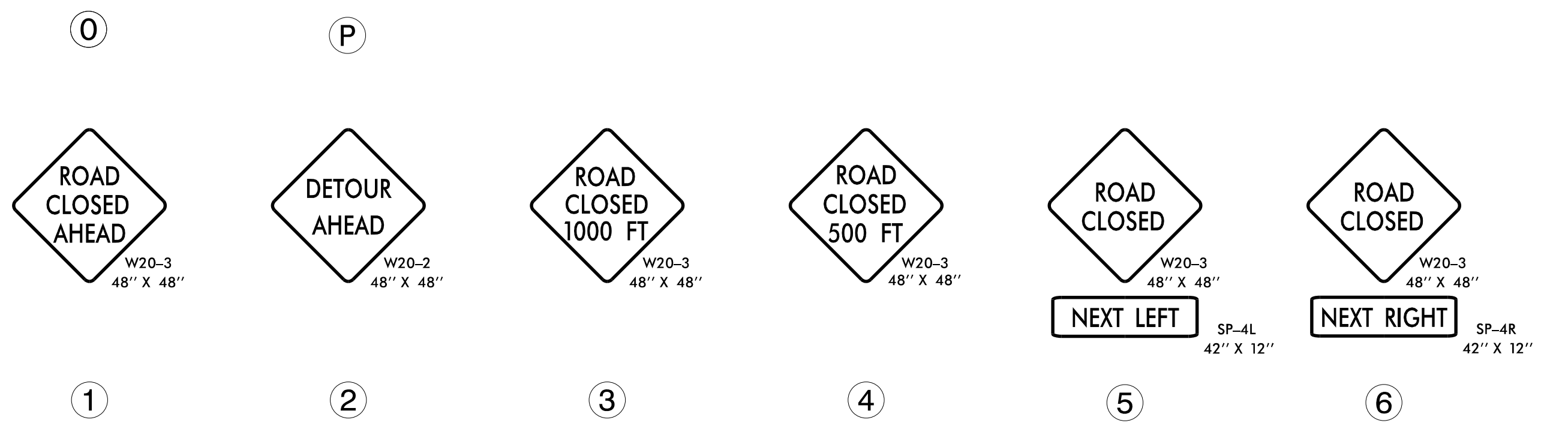
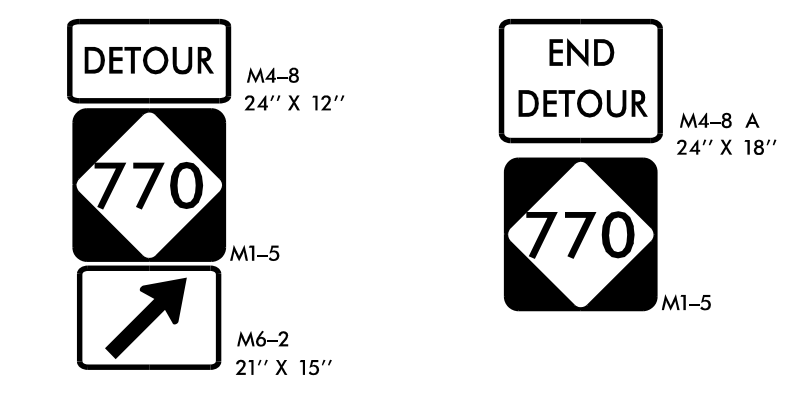
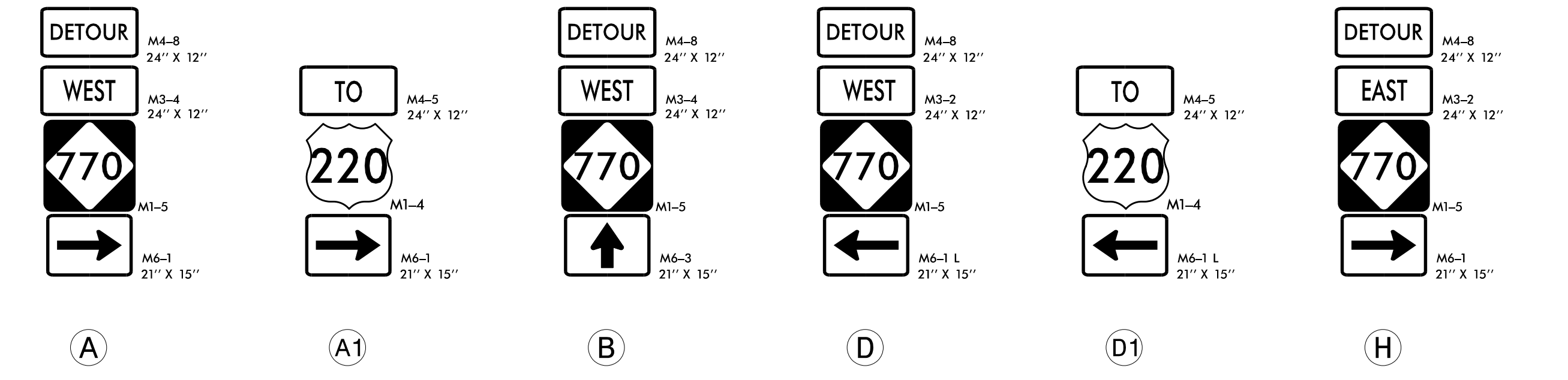
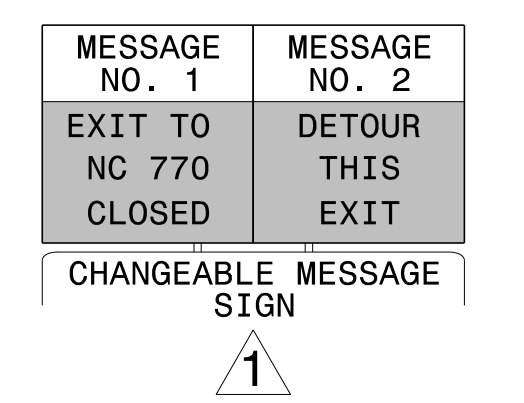
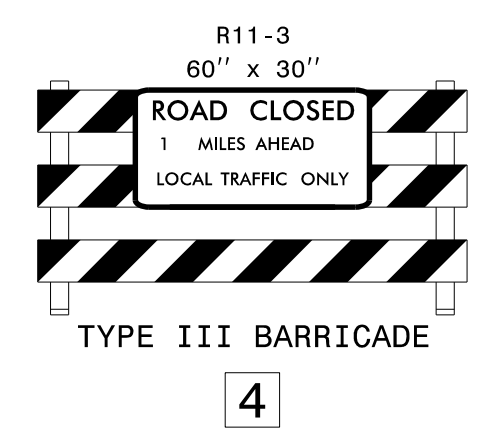
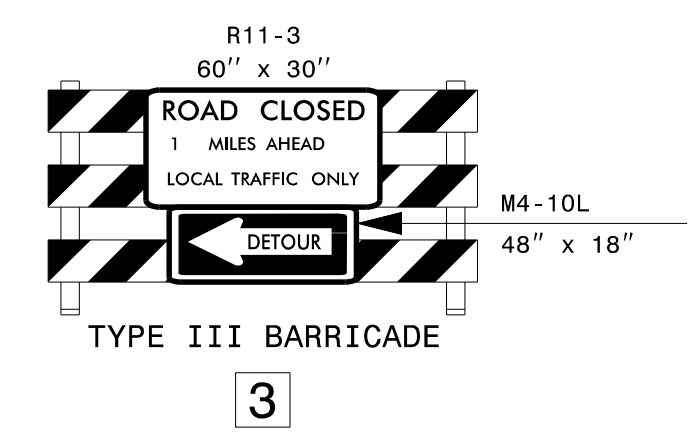
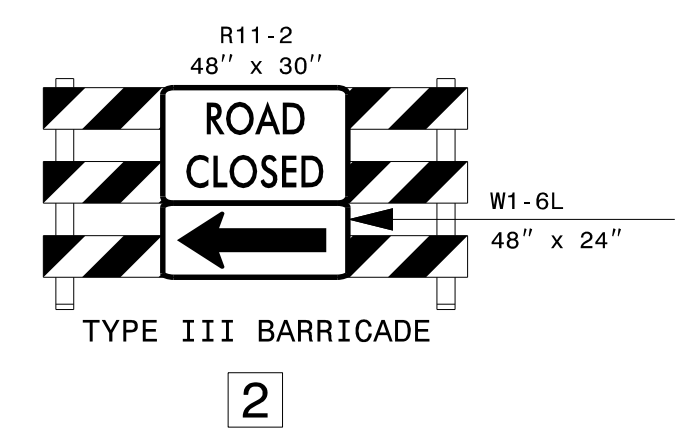


* DENOTES EXISTING DETOUR SIGN FROM TMP-2B



NOTE:
 IMPLEMENT US 220/NC 770 RAMP CLOSURES ONE PAIR OF RAMPS AT A TIME.
 COVER ANY CONFLICTING DETOUR SIGNAGE FROM TMP-2B.



APPROVED: *Kenneth C. Thornwell Jr., P.E.*
 DATE: 10/27/2022
 SEAL
 DOCUMENT NOT CONSIDERED FINAL UNLESS ALL SIGNATURES COMPLETED



**US 220
 NB RAMP CLOSURES
 OFF-SITE DETOUR**

10/27/2022
 P:\TipProjects\BR0094\TrafficControl\CP\BR0094_TC_TMP-2C_Off-site_Detour_220_NB_Ramps_Closure.dgn
 User: jdbaverl