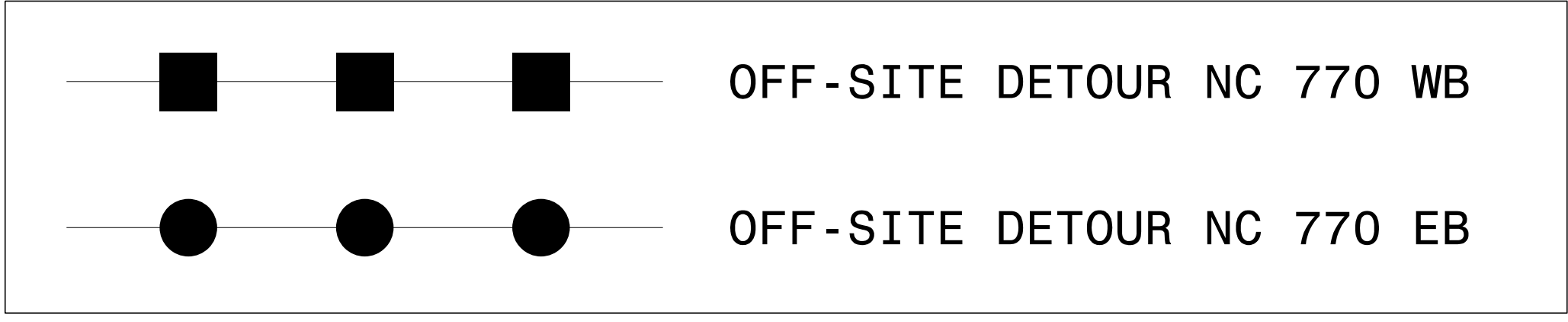
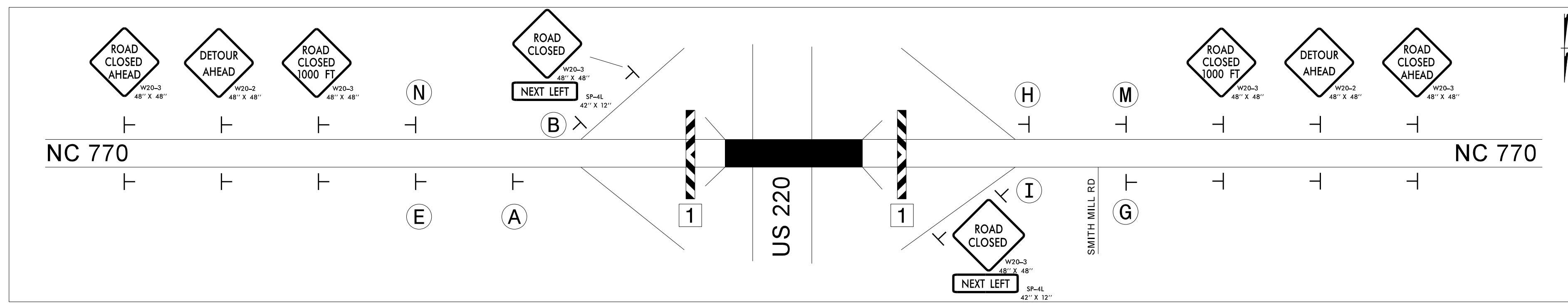
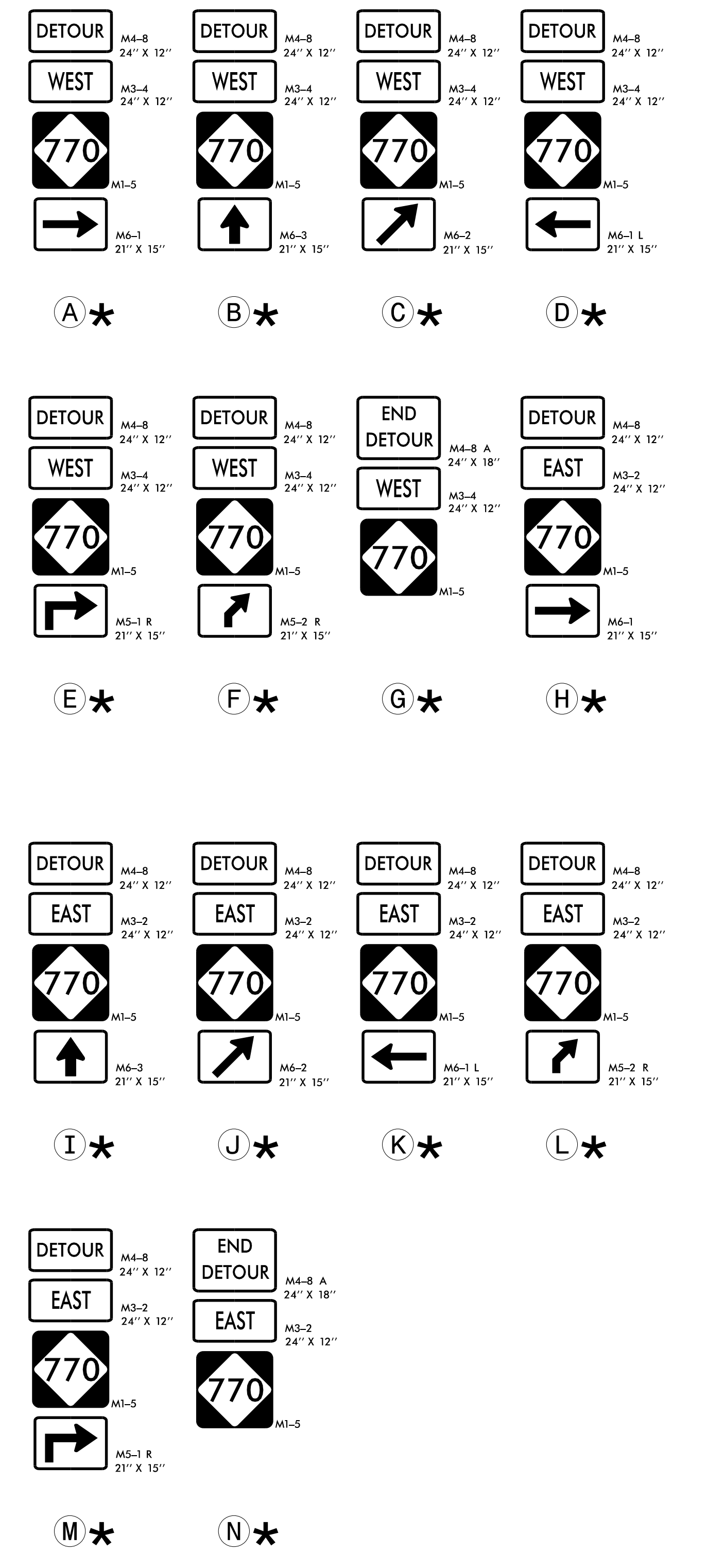


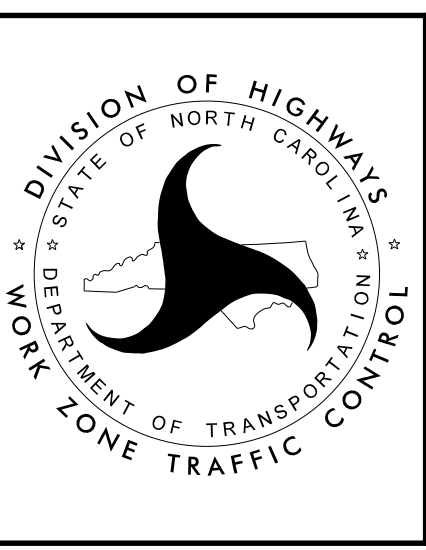
INSET A



\* DENOTES EXISTING DETOUR SIGNS TO BE MAINTAINED. CONTRACTOR SHALL REMOVE EXISTING TRUCK DETOUR PLAQUES. SEE SPECIAL PROVISIONS.



APPROVED: *Kenneth C. Thornwell Jr., P.E.*  
 DATE: 10/27/2022  
 SEAL  
 DOCUMENT NOT CONSIDERED FINAL UNLESS ALL SIGNATURES COMPLETED



NC 770  
 OFF-SITE  
 DETOUR ROUTES