

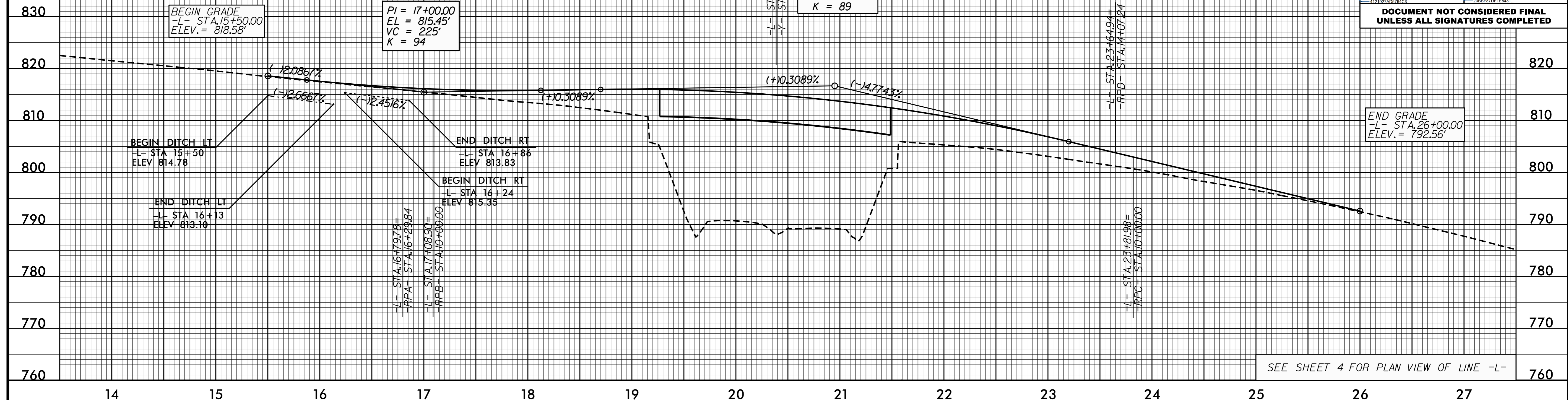
5/28/99

BM1 ELEVATION = 822.73
N 991015 E 1726704
BL STATION 9+80.00 79' LEFT
RR SPIKE IN 14' MAPLE TREE

BM2 ELEVATION = 774.15
N 989617 E 1727630
BL STATION 26+77.00 470' RIGHT
RR SPIKE IN 28' DBL CHERRY TREE

PROJECT REFERENCE NO. BR-0094	SHEET NO. 5
ROADWAY DESIGN ENGINEER	HYDRAULICS ENGINEER
10/31/2022	10/31/2022

DOCUMENT NOT CONSIDERED FINAL
UNLESS ALL SIGNATURES COMPLETED

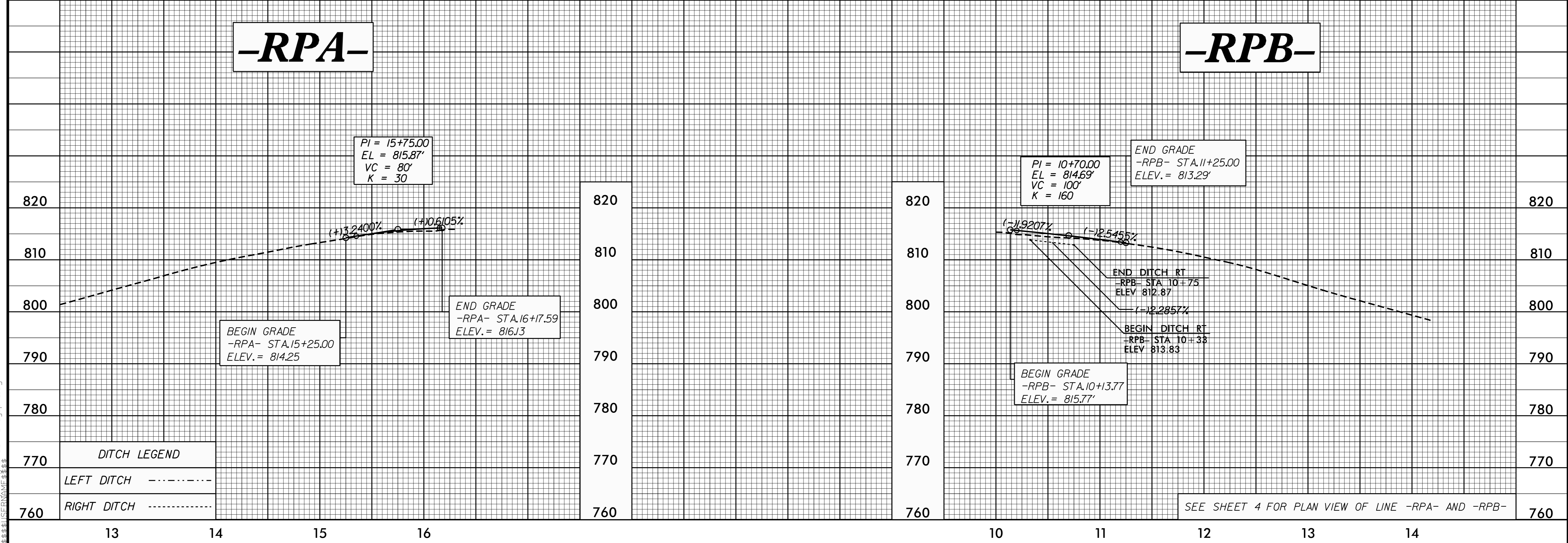


END GRADE
-L- STA. 26+00.00
ELEV. = 792.56'

SEE SHEET 4 FOR PLAN VIEW OF LINE -L-

-RPA-

-RPB-



DITCH LEGEND	
LEFT DITCH	-----
RIGHT DITCH	-----

SEE SHEET 4 FOR PLAN VIEW OF LINE -RPA- AND -RPB-

10-0CT-2022_10:23
14:33:59
D:\Projects\BR-0094_Rdy_p1.dgn