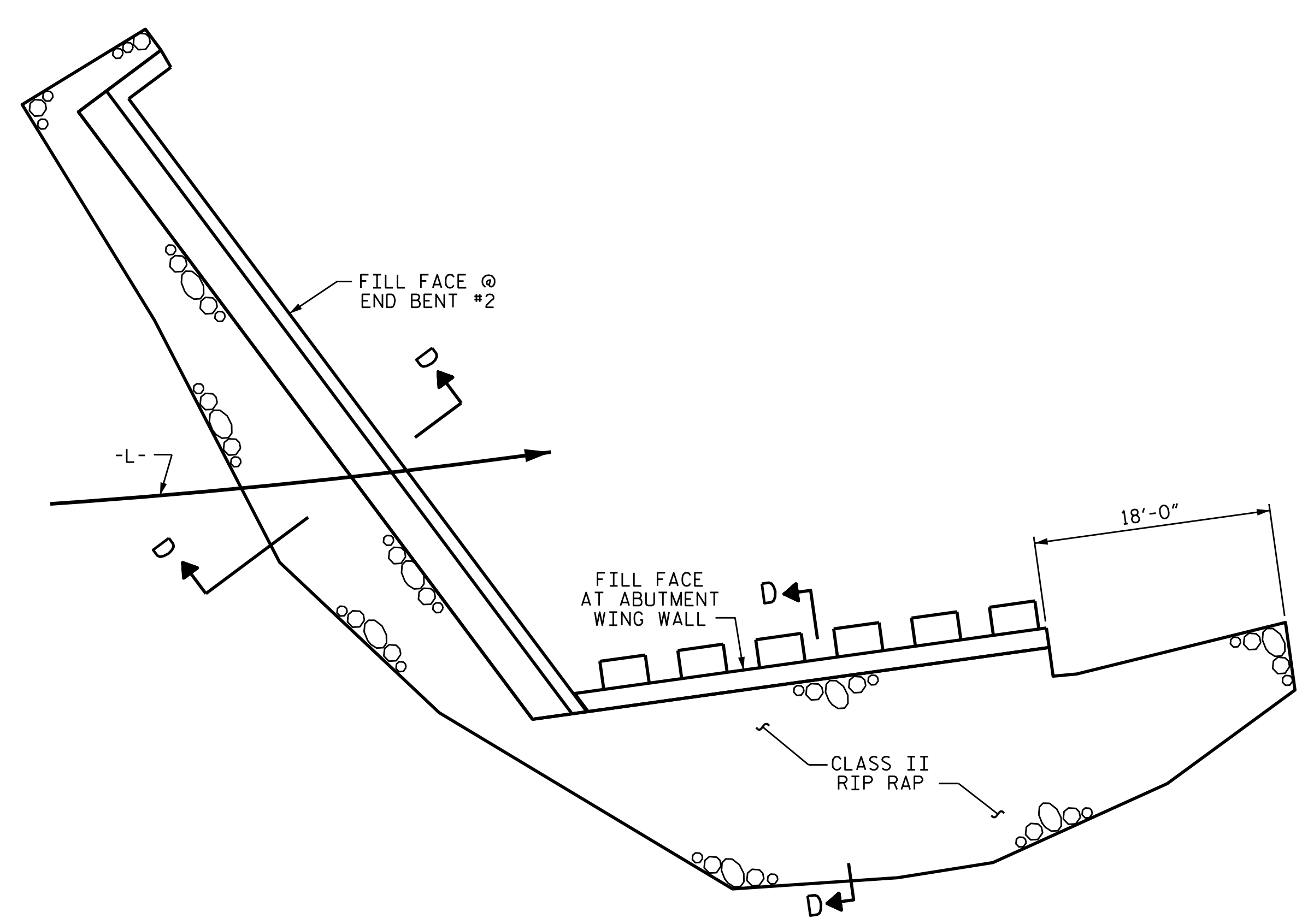
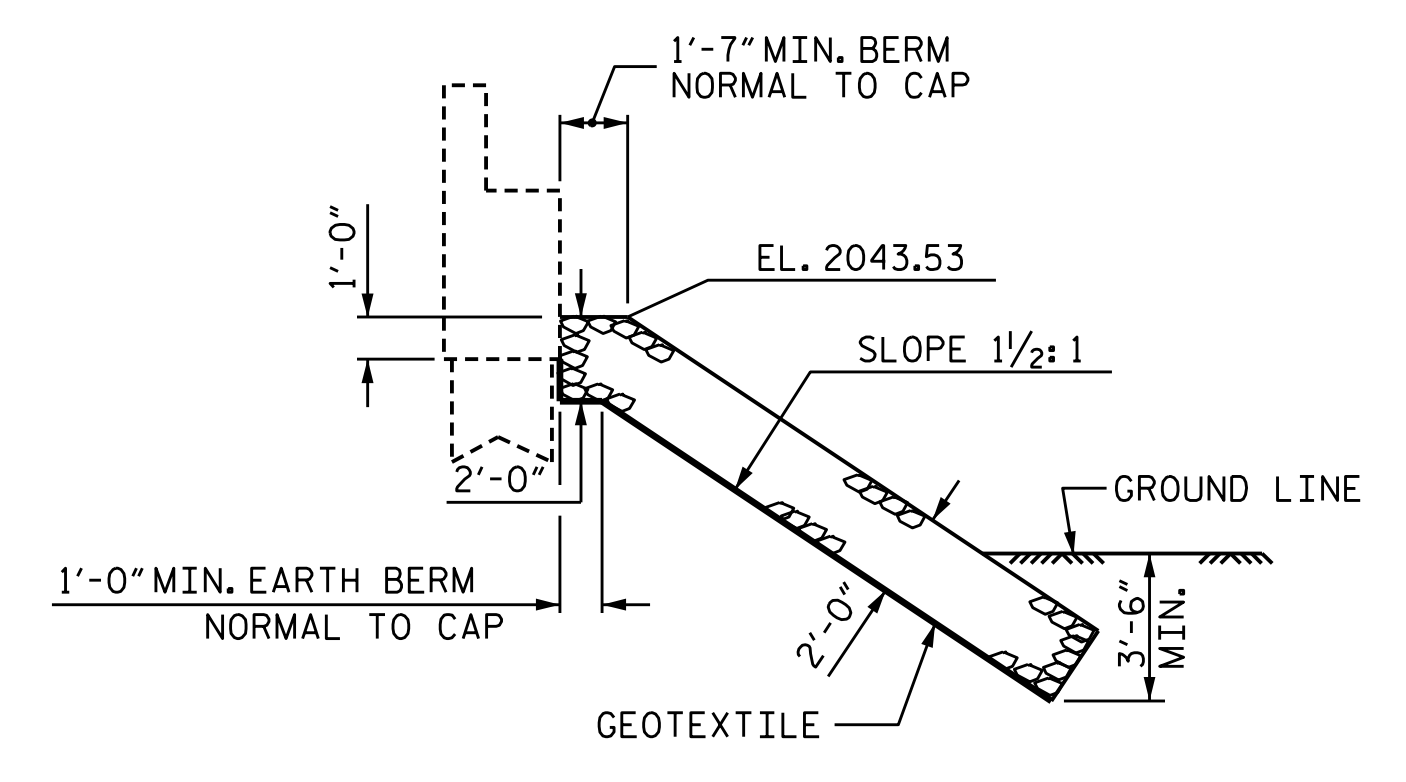


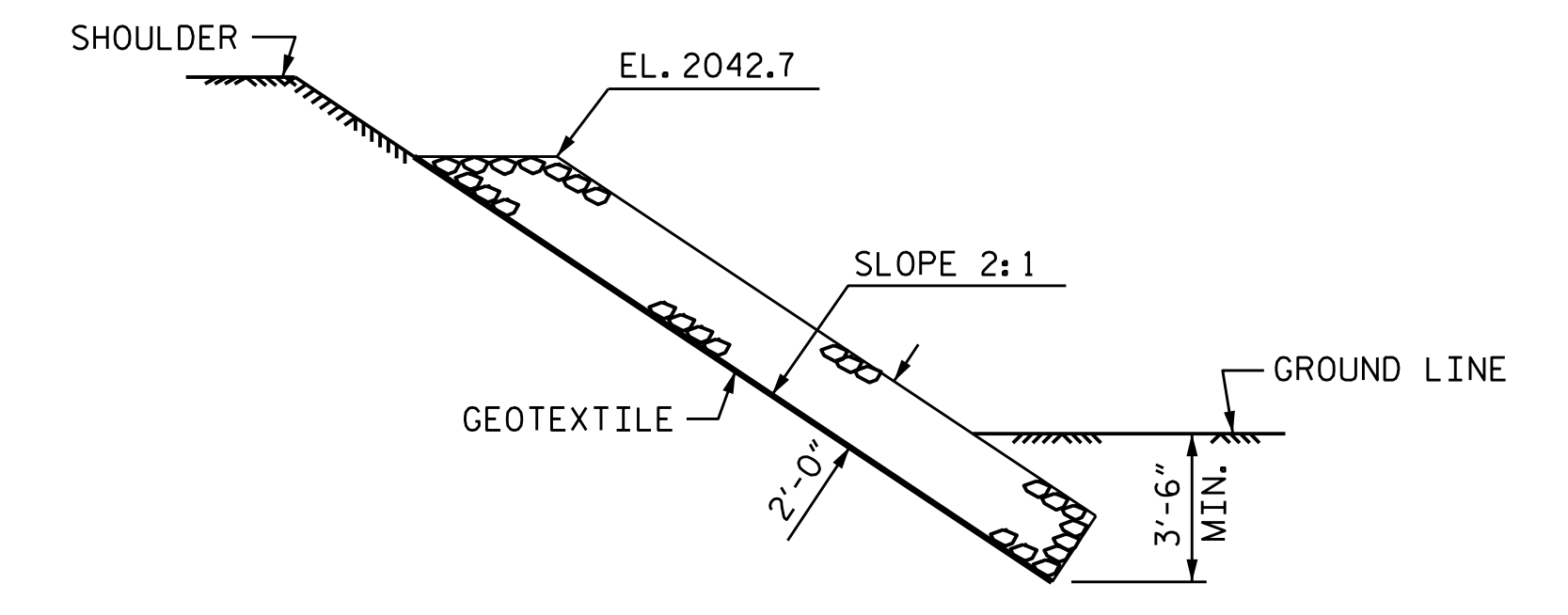
END BENT #1



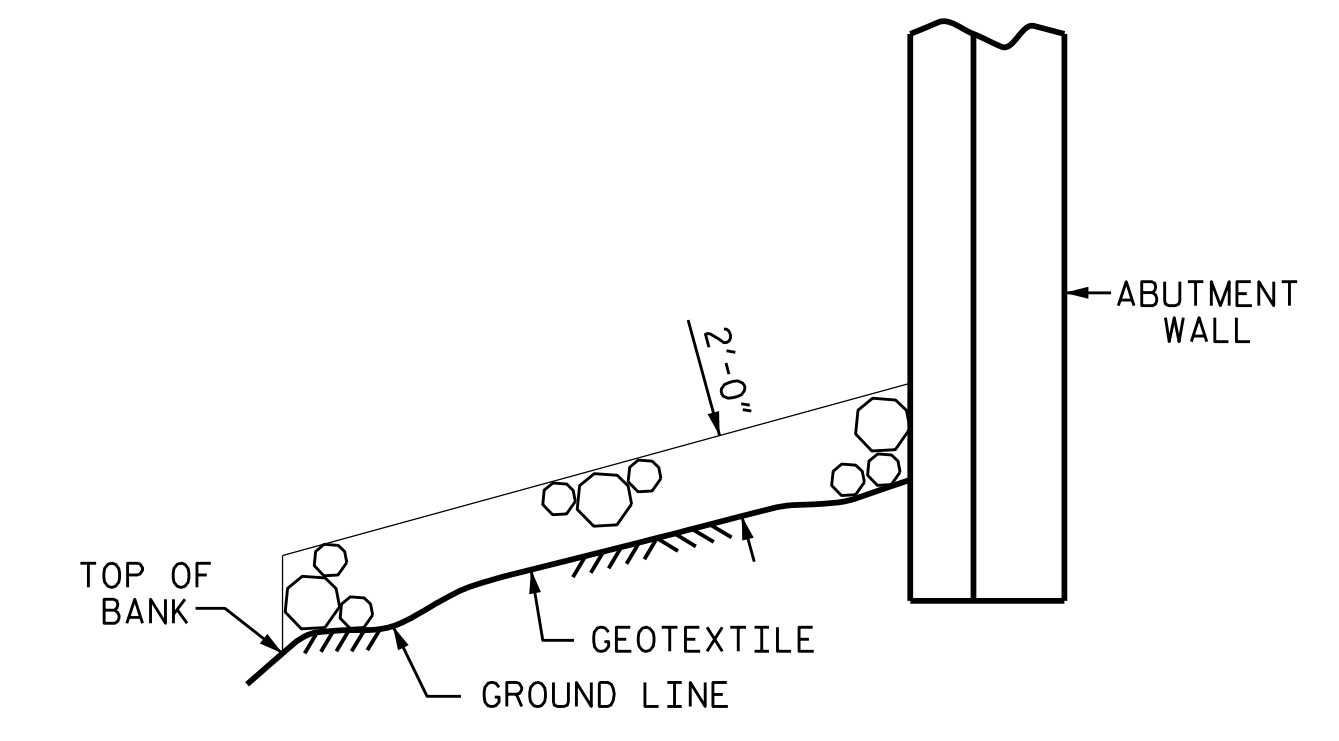
END BENT #2



C SECTION
END BENT 1 ONLY

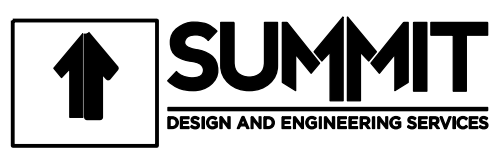


SECTION C-C

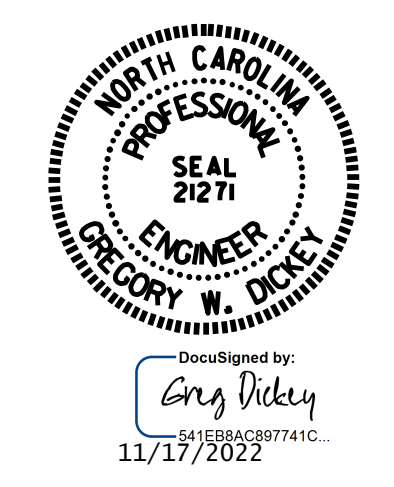


SECTION D-D
NOT TO SCALE

ESTIMATED QUANTITIES		
BRIDGE @ STA. 16+18.00 -L-	RIP RAP CLASS II (2'-0" THICK)	GEOTEXTILE FOR DRAINAGE
	TONS	SQUARE YARDS
END BENT 1	190	210
END BENT 2	110	120

Prepared in the Office of:

 NC FIRM LICENSE No: P-0339
 1110 Navaho Drive, Suite 600
 Raleigh, NC 27609
 Ph: 919-322-0115 Fax: 919-322-0116
 www.summitde.com

PROJECT NO. B-5989
MADISON COUNTY
 STATION: 16+18.00 -L-



STATE OF NORTH CAROLINA
 DEPARTMENT OF TRANSPORTATION
 RALEIGH
RIP RAP DETAILS

DRAWN BY : KEITH D. LAYNE DATE : 09/22
 CHECKED BY : G. DICKEY DATE : 09/22
 DESIGN ENGINEER OF RECORD: G. DICKEY DATE : 09/22

DOCUMENT NOT CONSIDERED FINAL UNLESS ALL SIGNATURES COMPLETED

REVISIONS						SHEET NO.
NO.	BY:	DATE:	NO.	BY:	DATE:	
1			3			TOTAL SHEETS
2			4			S-35