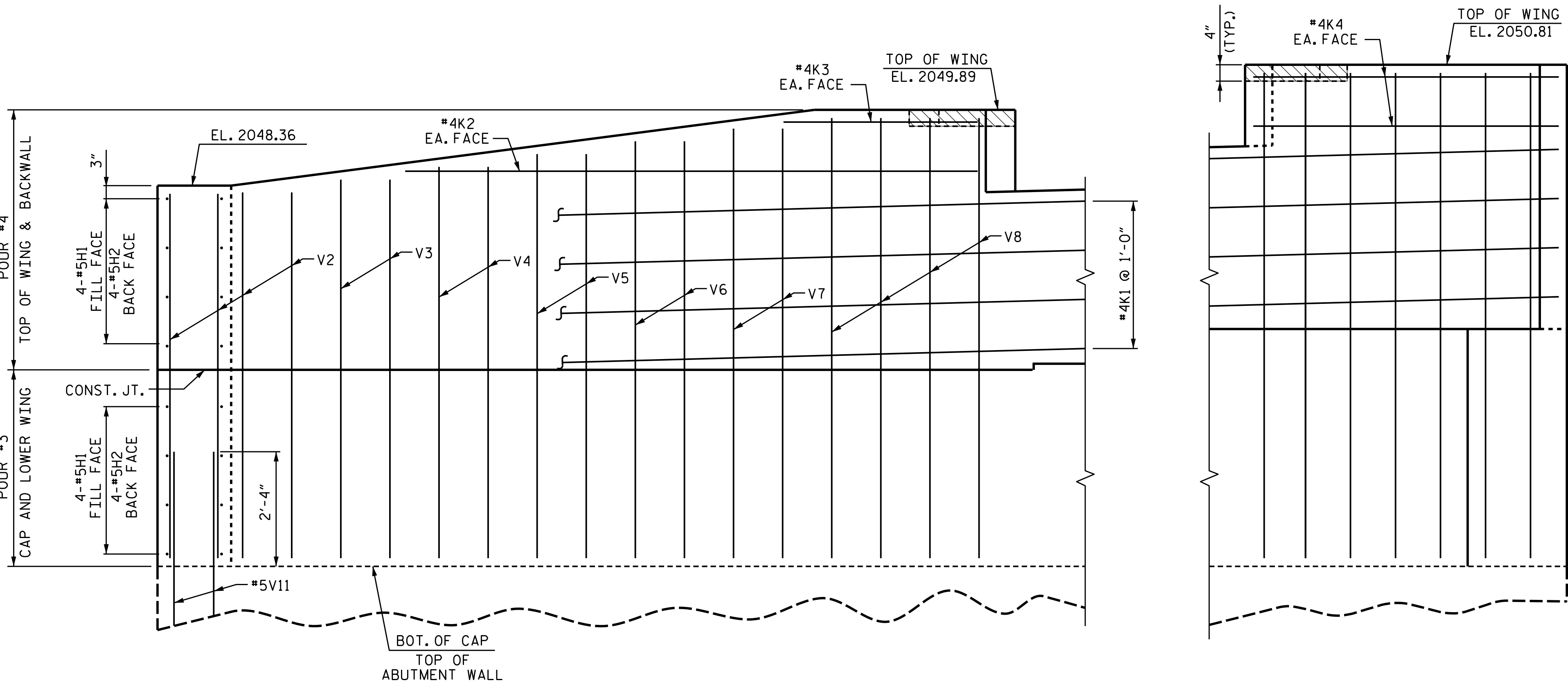


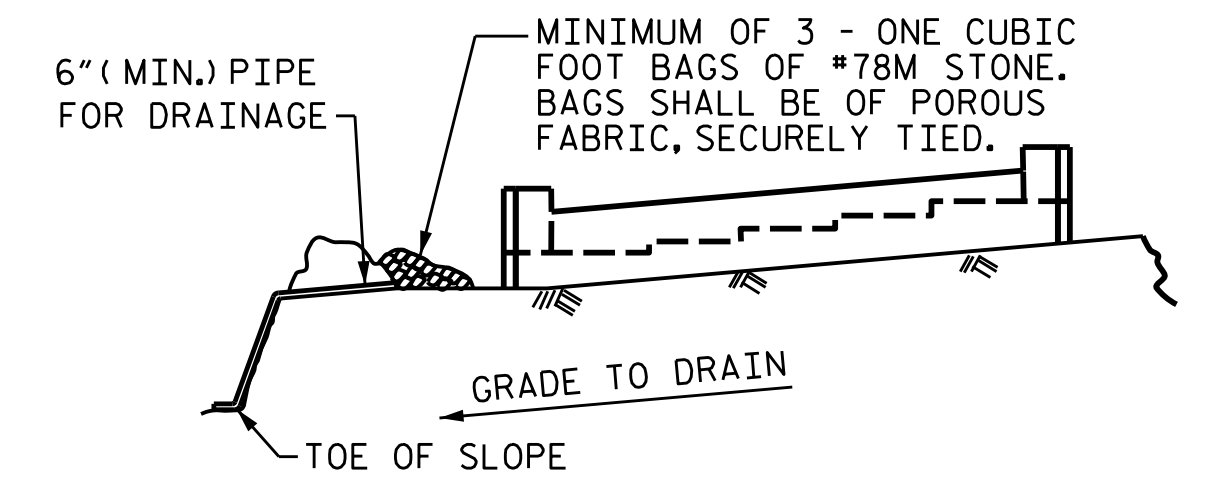
PLAN OF LEFT WING - (W1)

PLAN OF RIGHT BACKWALL



ELEVATION OF LEFT WING - (W1)

ELEVATION OF RIGHT WING - (W2)

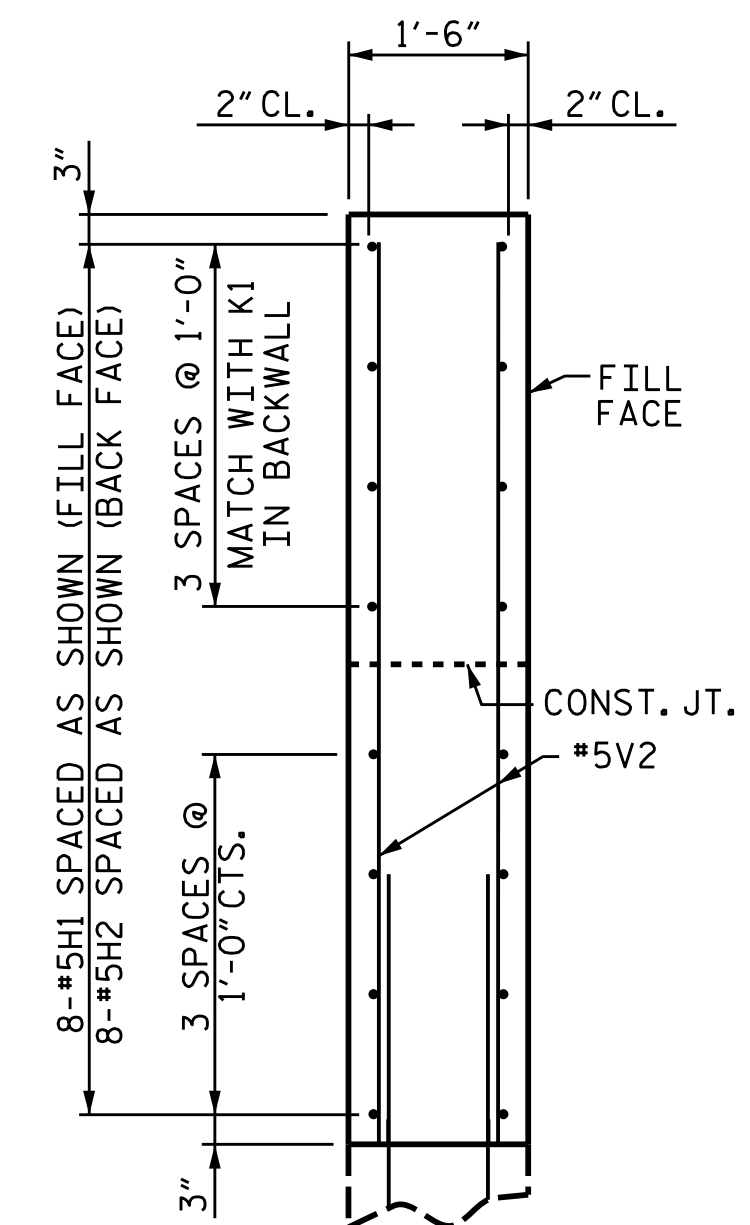


BAGGED STONE AND PIPE SHALL BE PLACED IMMEDIATELY AFTER COMPLETION OF END BENT EXCAVATION. PIPE MAY BE EITHER CONCRETE, CORRUGATED STEEL, CORRUGATED ALUMINUM ALLOY, OR CORRUGATED PLASTIC. PERFORATED PIPE WILL NOT BE ALLOWED.

BAGGED STONE SHALL REMAIN IN PLACE UNTIL THE ENGINEER DIRECTS THAT IT BE REMOVED. THE CONTRACTOR SHALL REMOVE AND DISPOSE OF SILT ACCUMULATIONS AT BAGGED STONE WHEN SO DIRECTED BY THE ENGINEER. BAGS SHALL BE REMOVED AND REPLACED WHENEVER THE ENGINEER DETERMINES THAT THEY HAVE DETERIORATED AND LOST THEIR EFFECTIVENESS.

NO SEPARATE PAYMENT WILL BE MADE FOR THIS WORK AND THE ENTIRE COST OF THIS WORK SHALL BE INCLUDED IN THE UNIT CONTRACT PRICE BID FOR THE SEVERAL PAY ITEMS.

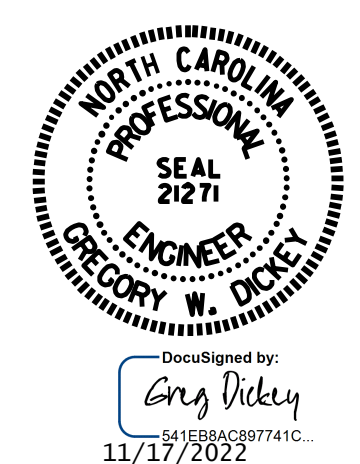
TEMPORARY DRAINAGE AT END BENT



SECTION X-X

Prepared in the Office of:
SUMMIT
 DESIGN AND ENGINEERING SERVICES
 NC FIRM LICENSE No: P-0339
 1110 Navaho Drive, Suite 600
 Raleigh, NC 27609
 Ph: 919-322-0115 Fax: 919-322-0116
 www.summitde.net

PROJECT NO. B-5989
MADISON COUNTY
 STATION: 16+18.00 -L-
 SHEET 5 OF 7



STATE OF NORTH CAROLINA
 DEPARTMENT OF TRANSPORTATION
 RALEIGH
 SUBSTRUCTURE
 END BENT #2
 BACKWALL & WING

REVISIONS				SHEET NO.		
NO.	BY:	DATE:	NO.	BY:	DATE:	TOTAL SHEETS
1			3			35
2			4			

DOCUMENT NOT CONSIDERED FINAL UNLESS ALL SIGNATURES COMPLETED

\$LASTSAVEDDATE\$ TIME\$ FILE\$

DRAWN BY : KEITH D LAYNE DATE : 09/22
 CHECKED BY : G. DICKEY DATE : 09/22
 DESIGN ENGINEER OF RECORD: G. DICKEY DATE : 09/22