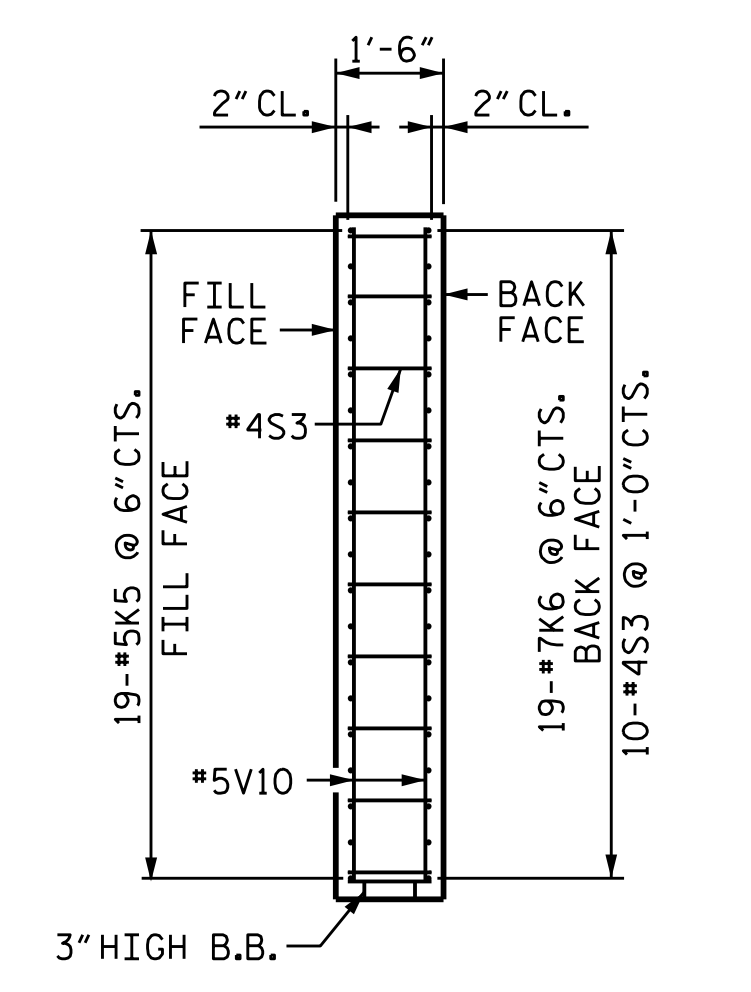
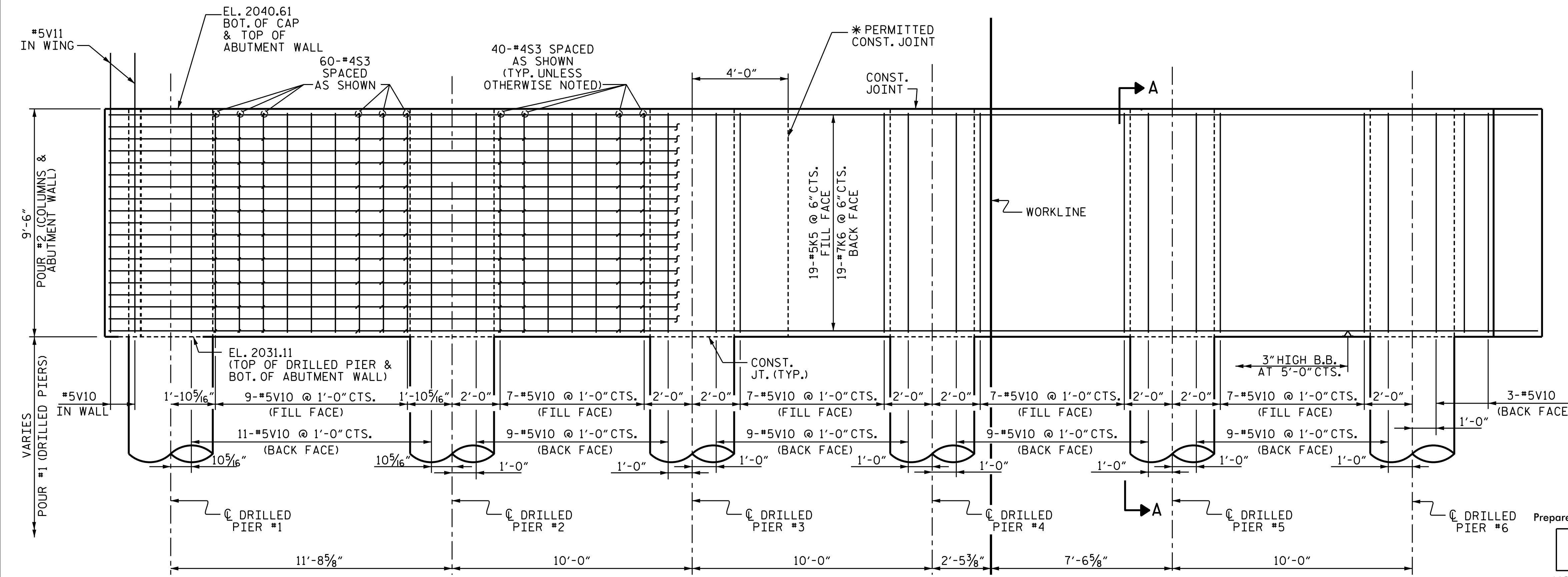


PLAN ABUTMENT WALL



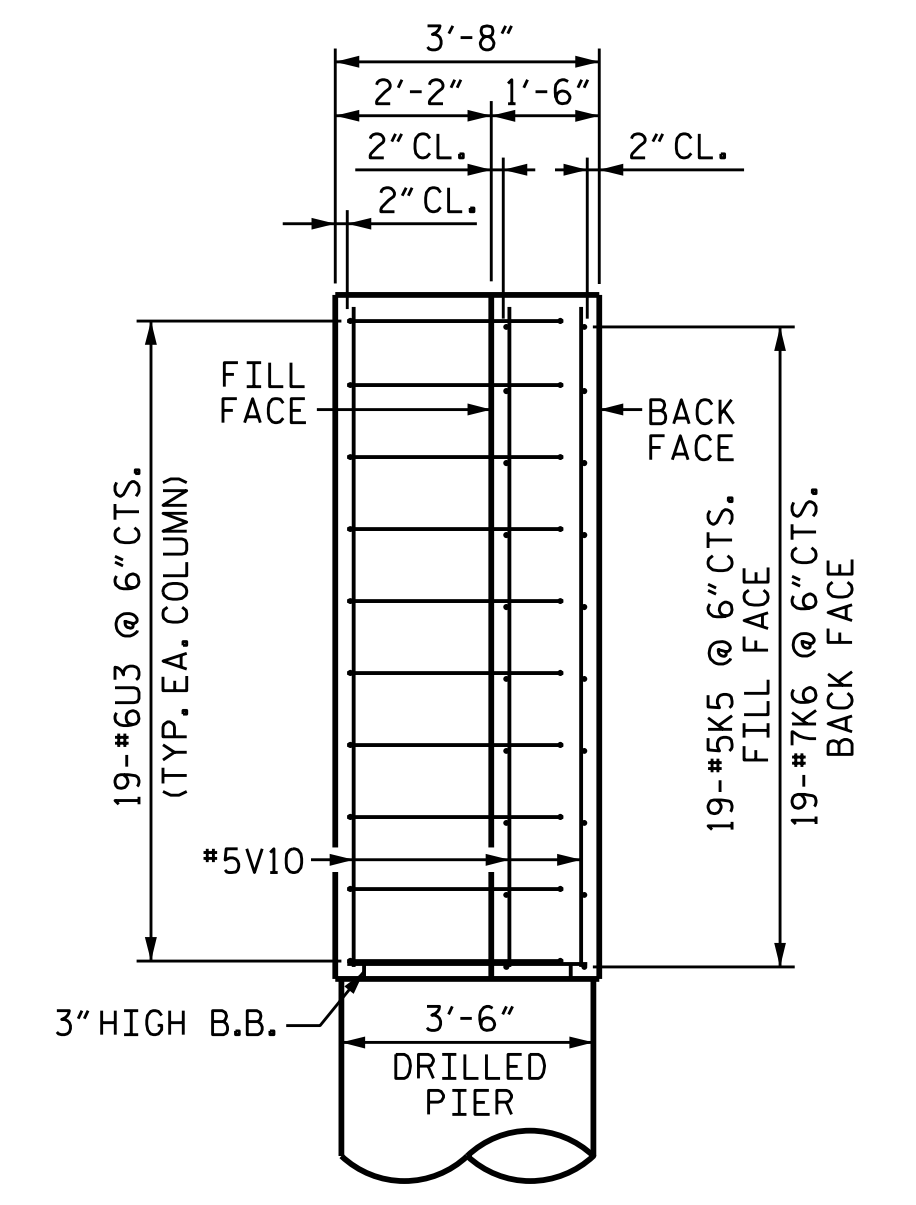
SECTION THRU ABUTMENT WALL



ELEVATION ABUTMENT WALL

"M", "V" & SPIRAL STEEL NOT SHOWN IN DRILLED PIERS FOR CLARITY, SEE SHEET 2 OF 7

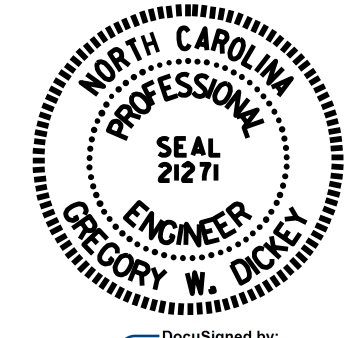
* THE CONTRACTOR HAS THE OPTION TO SPLICE THE #7K6 BARS USING A SPLICE LENGTH OF 4'-2". THE #5K5 BARS MAY BE SPLICED USING A SPLICE LENGTH OF 3'-0". BILL OF MATERIAL DOES NOT INCLUDE SPLICE LENGTHS.



SECTION A-A

"M", "V" & SPIRAL STEEL NOT SHOWN IN DRILLED PIERS FOR CLARITY, SEE SHEET 1 OF 7

Prepared in the Office of:
SUMMIT
 DESIGN AND ENGINEERING SERVICES
 NC FIRM LICENSE No: P-0339
 1110 Navaho Drive, Suite 600
 Raleigh, NC 27609
 Ph: 919-322-0115 Fax: 919-322-0116
 www.summitde.com



PROJECT NO. B-5989
MADISON COUNTY
 STATION: 16+18.00 -L-
 SHEET 3 OF 7

STATE OF NORTH CAROLINA
 DEPARTMENT OF TRANSPORTATION
 RALEIGH
 SUBSTRUCTURE
END BENT #2
ABUTMENT WALL

REVISIONS						SHEET NO.
NO.	BY:	DATE:	NO.	BY:	DATE:	
1			3			S-27
2			4			TOTAL SHEETS 35

DOCUMENT NOT CONSIDERED FINAL UNLESS ALL SIGNATURES COMPLETED

DRAWN BY : KEITH D LAYNE DATE : 09/22
 CHECKED BY : G. DICKEY DATE : 09/22
 DESIGN ENGINEER OF RECORD: GDICKEY DATE : 09/22

\$LASTSAVEDDATE\$ TIME\$ FILE\$