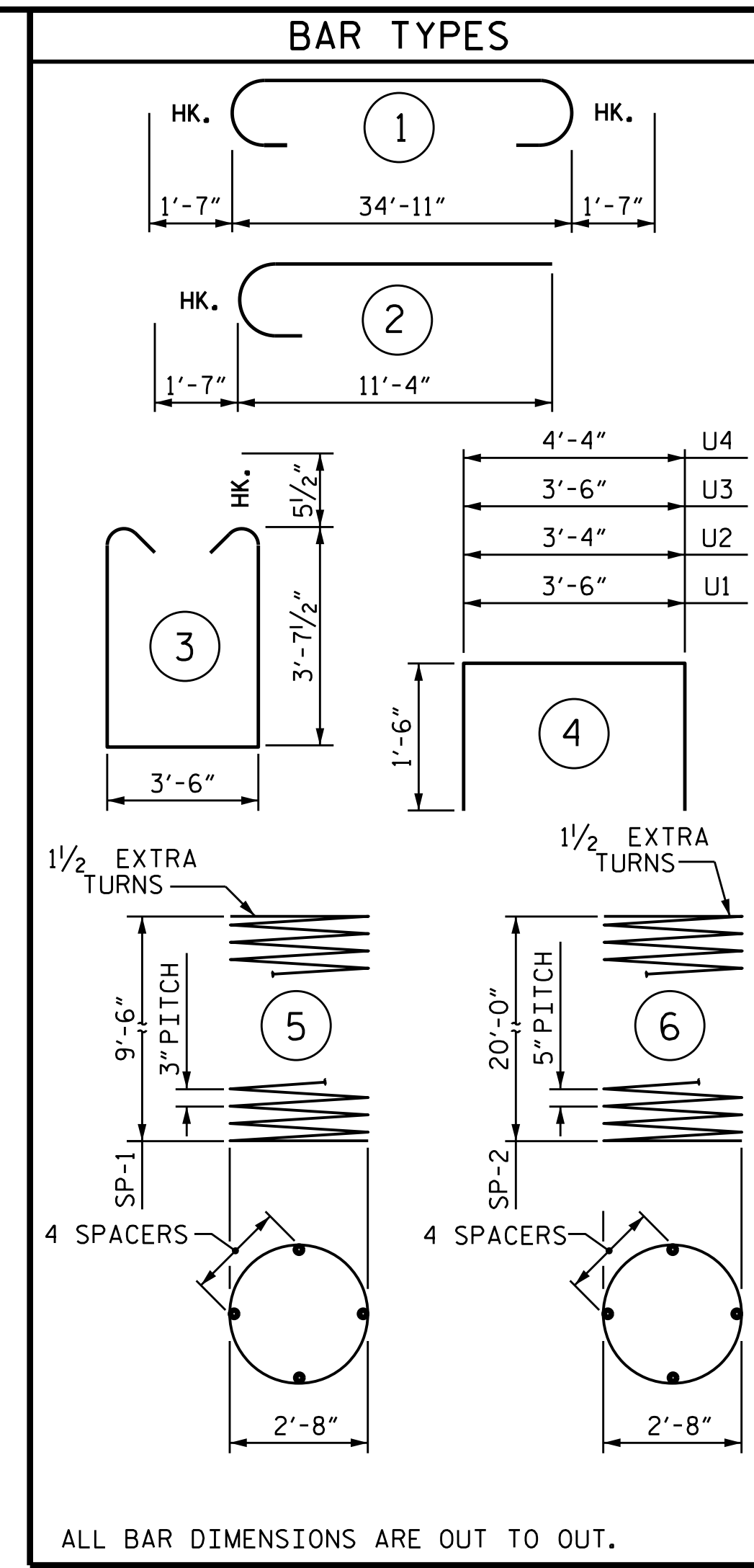


PLAN OF COLUMNS
(TYP.)

PLAN OF DRILLED PIERS
(TYP.)

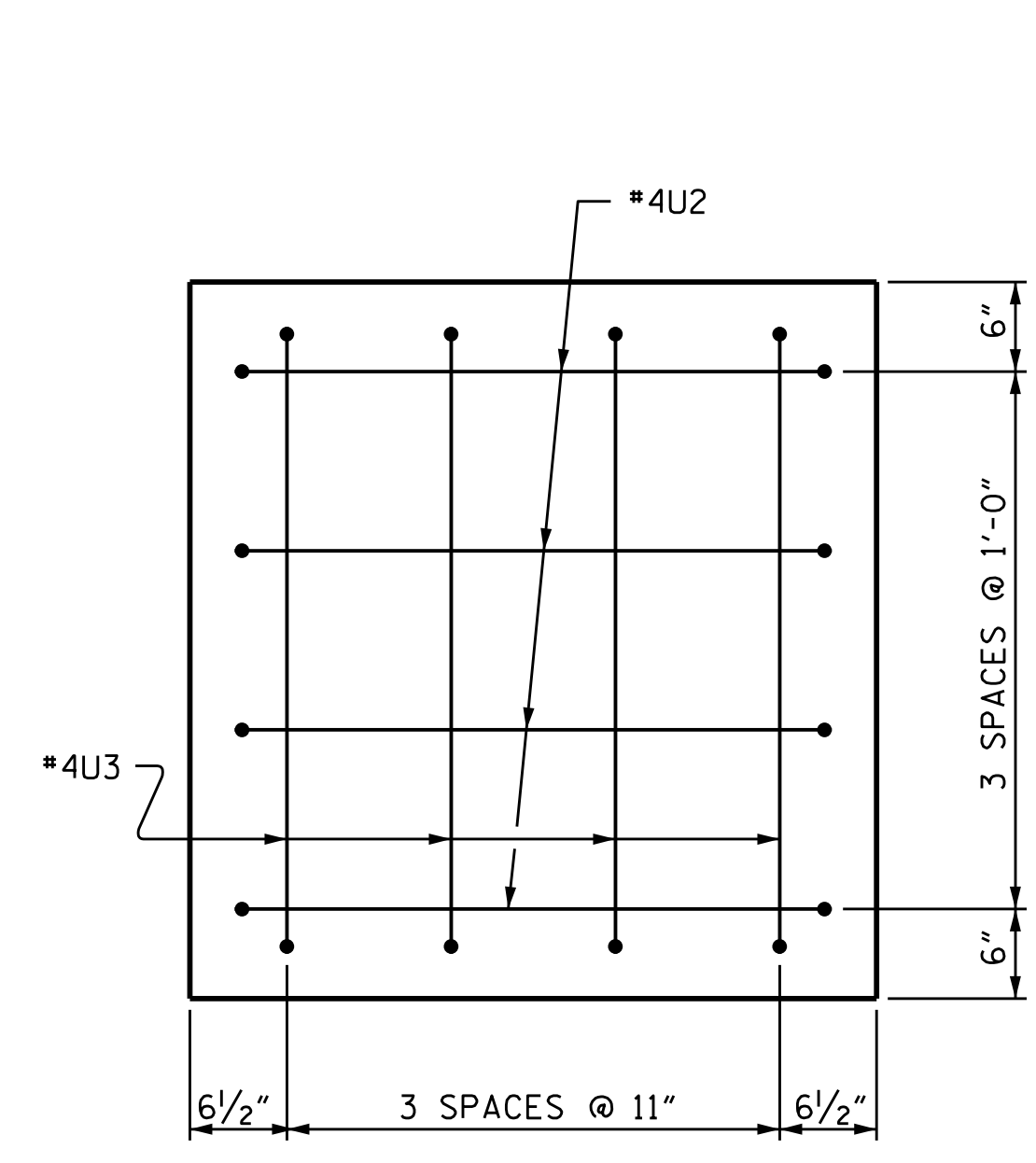
PLAN OF COLUMNS AND DRILLED PIERS
REINFORCING STEEL & DETAILS ARE TYPICAL FOR EACH DRILLED PIER.



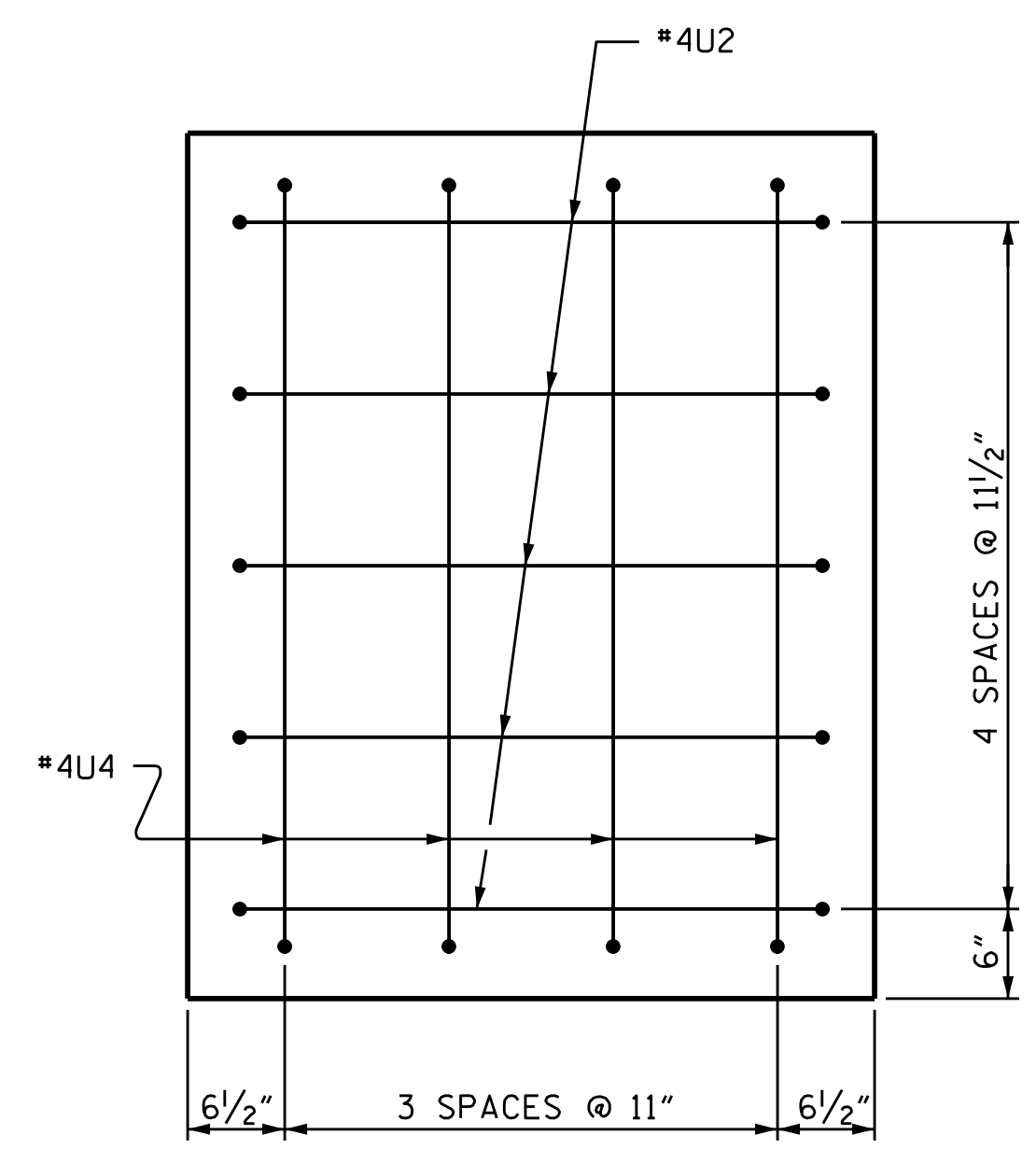
ALL BAR DIMENSIONS ARE OUT TO OUT.

** THE SP-1 SPIRAL REINFORCING STEEL SHALL BE W20 OR D-20 COLD DRAWN WIRE OR #4 PLAIN OR DEFORMED BAR.
*** THE SP-2 SPIRAL REINFORCING STEEL SHALL BE W31 OR D-31 COLD DRAWN WIRE OR #5 PLAIN OR DEFORMED BAR.

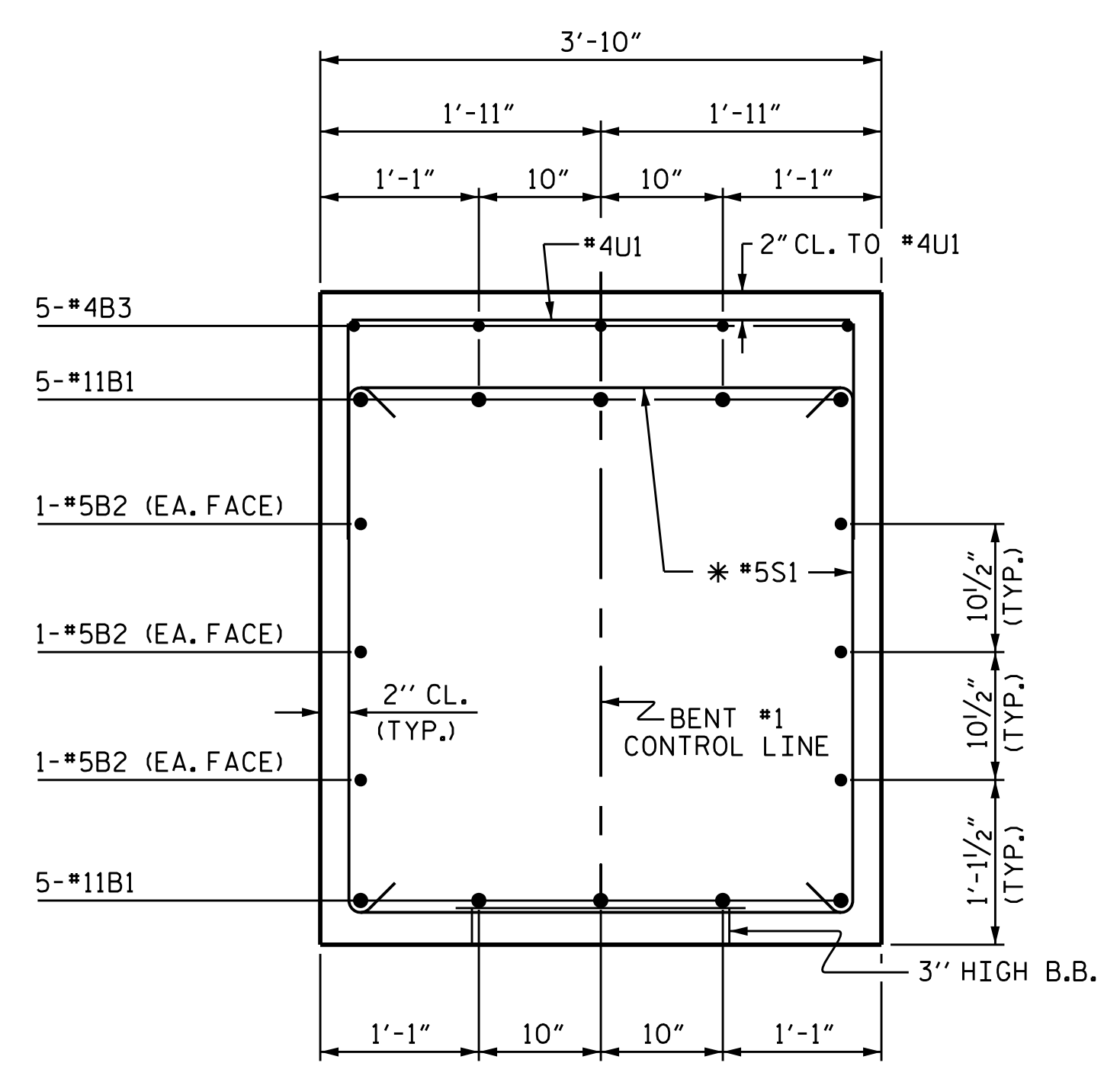
BILL OF MATERIAL					
BENT #1					
BAR	NO.	SIZE	TYPE	LENGTH	WEIGHT
B1	10	#11	1	38'-1"	2023
B2	6	#5	STR	35'-1"	220
B3	10	#4	STR	10'-2"	68
B4	5	#4	STR	3'-11"	13
M1	36	#11	STR	28'-4"	5419
S1	46	#5	3	11'-8"	560
U1	40	#4	4	6'-6"	174
U2	9	#4	4	6'-4"	38
U3	4	#4	4	6'-6"	17
U4	4	#4	4	7'-4"	20
V1	36	#11	2	12'-11"	2471
TOTAL REINFORCING STEEL LBS.					11023
SP-1	3	***	5	325'-11"	653
SP-2	3	***	6	407'-2"	1274
SPIRAL COLUMN REINFORCING STEEL LBS.					1927
CLASS A CONCRETE BREAKDOWN					
POUR #2 (COLUMNS)					7.3 C.Y.
POUR #3 (BENT CAP)					21.8 C.Y.
TOTAL					29.1 C.Y.
DRILLED PIER QUANTITIES					
DRILLED PIER CONCRETE					
POUR #1 (DRILLED PIERS)					21.9 C.Y.



VIEW X-X



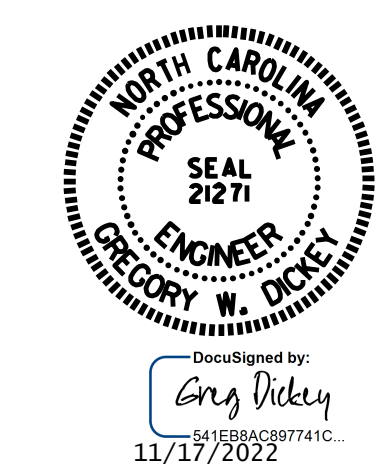
VIEW Y-Y



SECTION A-A
* INVERT ALTERNATE STIRRUPS

Prepared in the Office of:
SUMMIT
DESIGN AND ENGINEERING SERVICES
NC FIRM LICENSE No: P-0339
1110 Navaho Drive, Suite 600
Raleigh, NC 27609
Ph: 919-322-0115 Fax: 919-322-0116
www.summitde.com

PROJECT NO. B-5989
MADISON COUNTY
STATION: 16+18.00 -L-
SHEET 2 OF 2



STATE OF NORTH CAROLINA
DEPARTMENT OF TRANSPORTATION
RALEIGH
SUBSTRUCTURE
BENT #1

REVISIONS				SHEET NO.
NO.	BY:	DATE:	NO.	DATE:
1			3	
2			4	

DOCUMENT NOT CONSIDERED FINAL UNLESS ALL SIGNATURES COMPLETED

\$LASTSAVEDDATE TIME \$ FILE \$

DRAWN BY : KEITH D LAYNE DATE : 03/21
CHECKED BY : G. DICKEY DATE : 07/22
DESIGN ENGINEER OF RECORD: G. DICKEY DATE : 07/22