

### NOTES

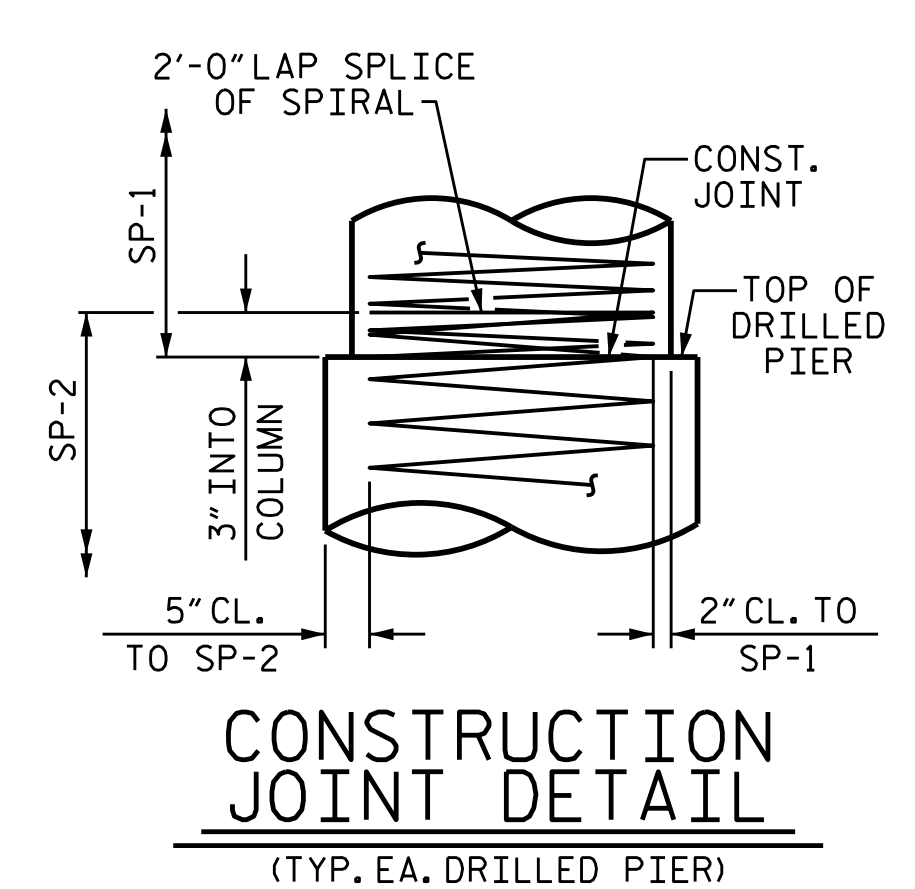
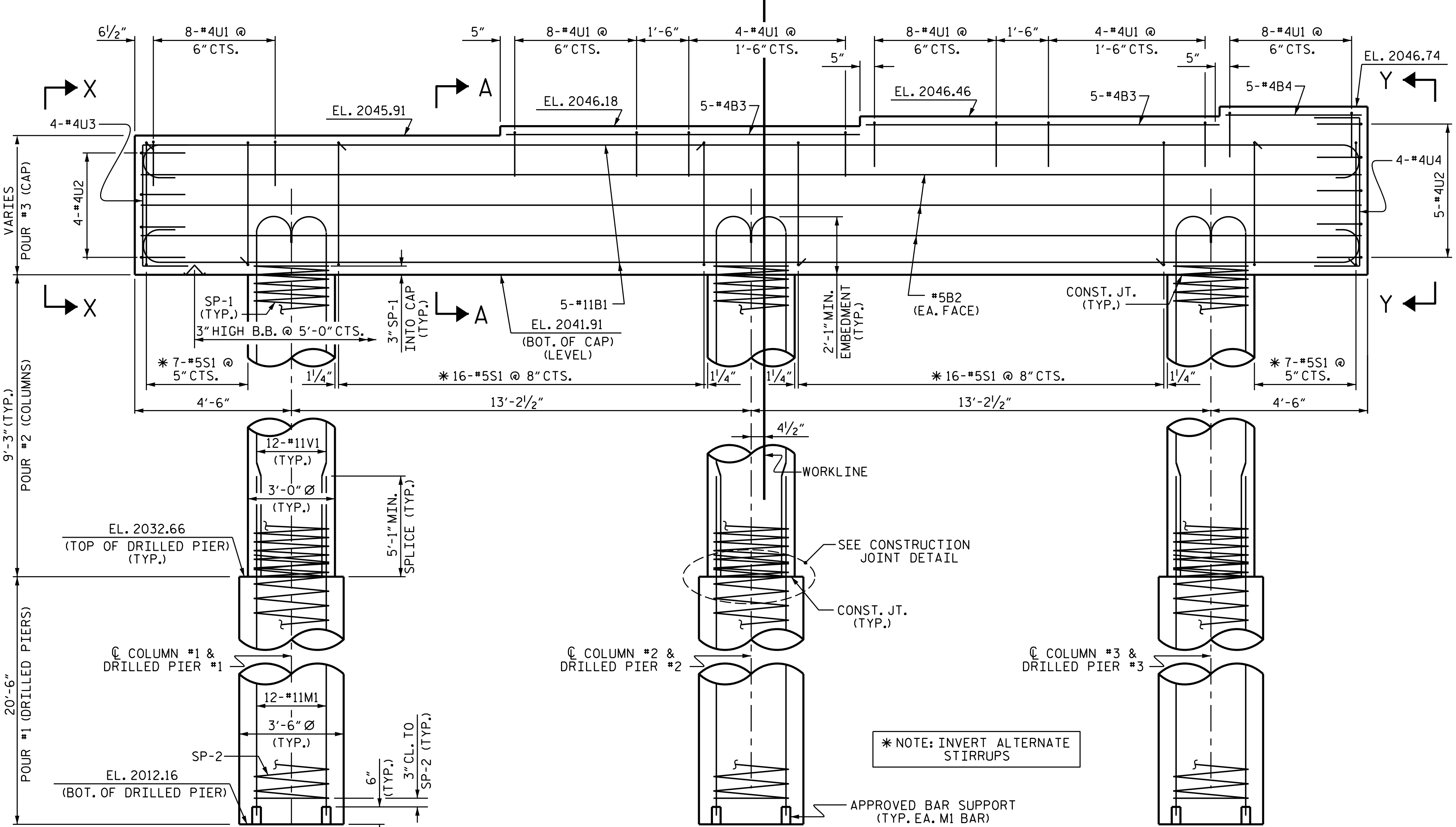
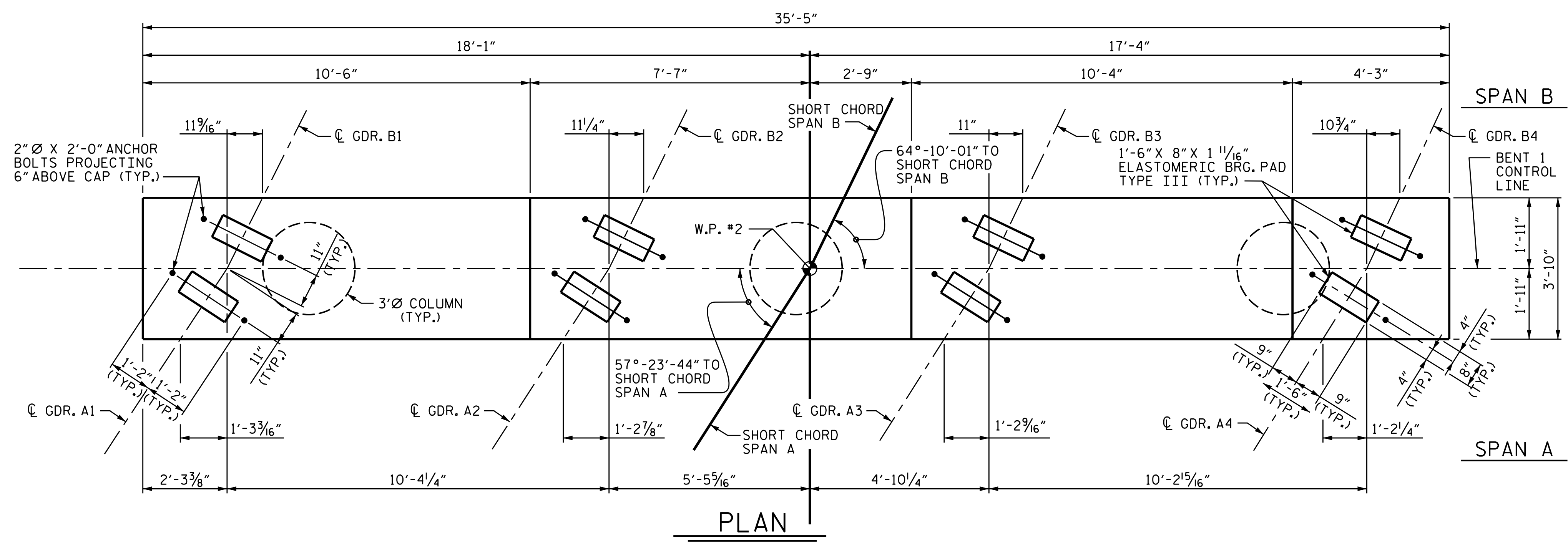
STIRRUPS IN CAP MAY BE SHIFTED AS NECESSARY TO CLEAR ANCHOR BOLTS.

HOOKS ON "V" BARS MAY BE TURNED AS NECESSARY FOR PLACING REINFORCING STEEL.

ALL STEEL IN THE DRILLED PIERS IS INCLUDED IN THE PAY ITEMS FOR "REINFORCING STEEL" AND "SPIRAL COLUMN REINFORCING STEEL".

THE CONTRACTOR'S ATTENTION IS CALLED TO THE FACT THAT THE LONGITUDINAL REINFORCEMENT FOR THE DRILLED PIERS IS DETAILED WITH 3 FEET OF EXTRA LENGTH.

THE LOCATION OF THE CONSTRUCTION JOINT IN THE DRILLED PIER IS BASED ON AN APPROXIMATE GROUND LINE ELEVATION. IF THE CONSTRUCTION JOINT IS ABOVE THE ACTUAL GROUND ELEVATION, THE CONTRACTOR SHALL PLACE THE CONSTRUCTION JOINT 1 FOOT BELOW THE GROUND LINE.



Prepared in the Office of:

**SUMMIT**  
DESIGN AND ENGINEERING SERVICES

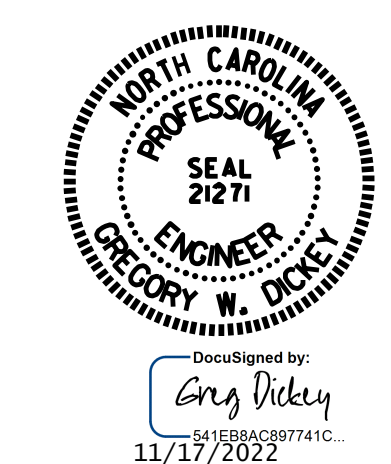
NC FIRM LICENSE No: P-0339  
1110 Navaho Drive, Suite 600  
Raleigh, NC 27609  
Ph: 919-322-0115 Fax: 919-322-0116  
www.summitde.com

PROJECT NO. B-5989

MADISON COUNTY

STATION: 16+18.00 -L-

SHEET 1 OF 2



STATE OF NORTH CAROLINA  
DEPARTMENT OF TRANSPORTATION  
RALEIGH

SUBSTRUCTURE  
**BENT #1**

LAST SAVED DATE TIME \$  
FILE \$

DRAWN BY : KEITH D LAYNE DATE : 03/21  
CHECKED BY : G. DICKEY DATE : 7/22  
DESIGN ENGINEER OF RECORD : G. DICKEY DATE : 7/22

**ELEVATION**

REINFORCING STEEL & DETAILS ARE TYPICAL FOR EACH DRILLED PIER.

\* NOTE: INVERT ALTERNATE STIRRUPS

REVISIONS				SHEET NO.	
NO.	BY:	DATE:	NO.	BY:	DATE:
1			3		
2			4		

DOCUMENT NOT CONSIDERED FINAL UNLESS ALL SIGNATURES COMPLETED

TOTAL SHEETS: 35