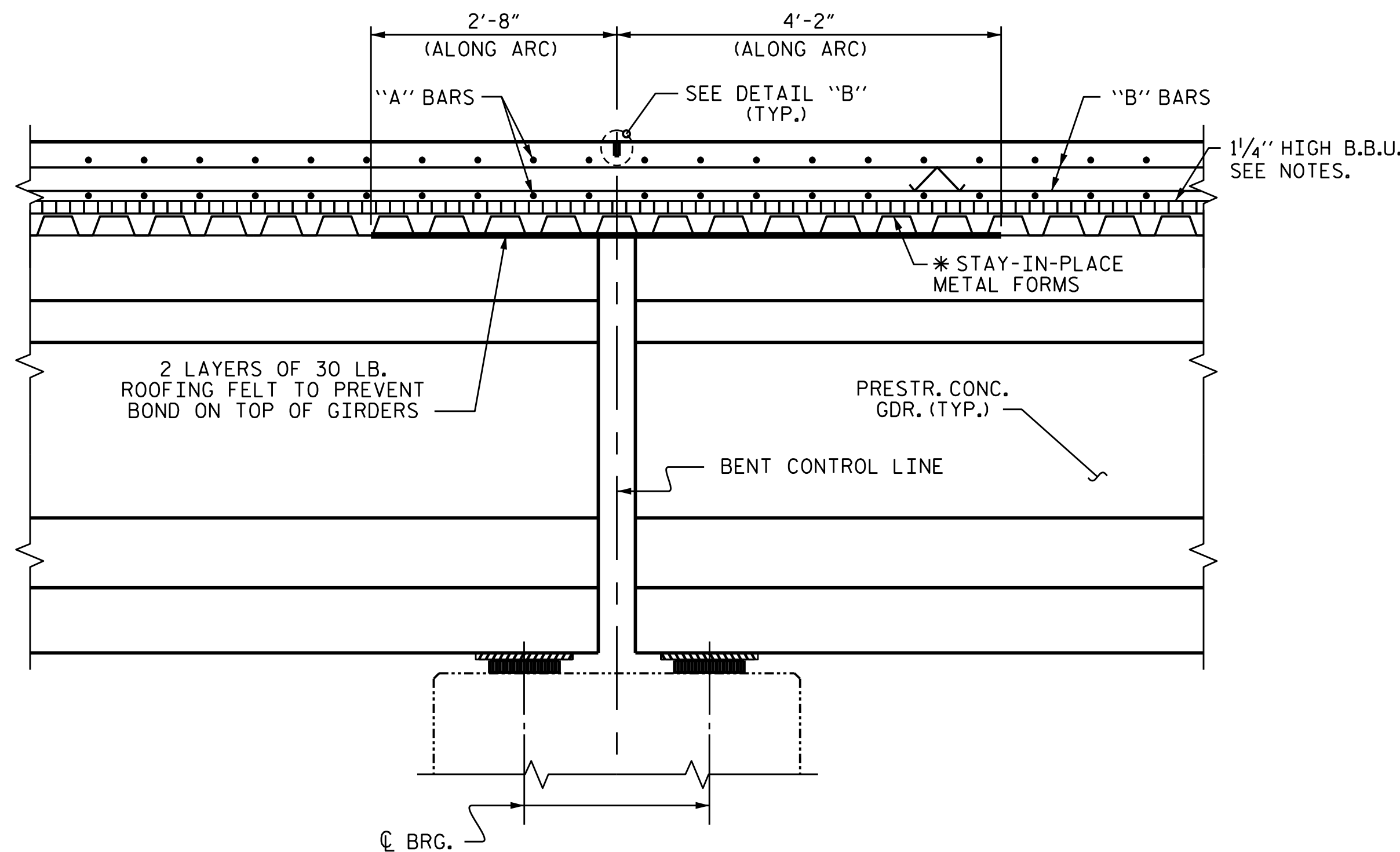


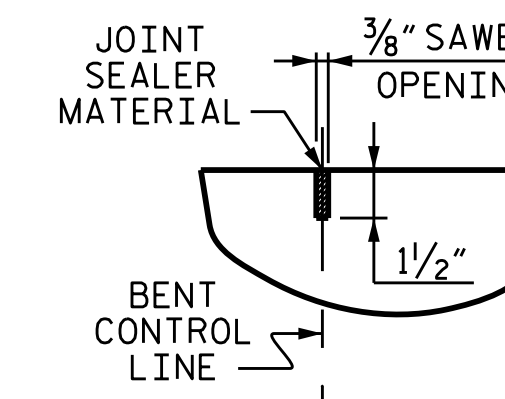
SECTION THRU DIAPHRAGM AT END BENTS

* #5G BAR MAY BE SHIFTED SLIGHTLY, AS NECESSARY, TO CLEAR REINFORCING STEEL AND STIRRUPS.



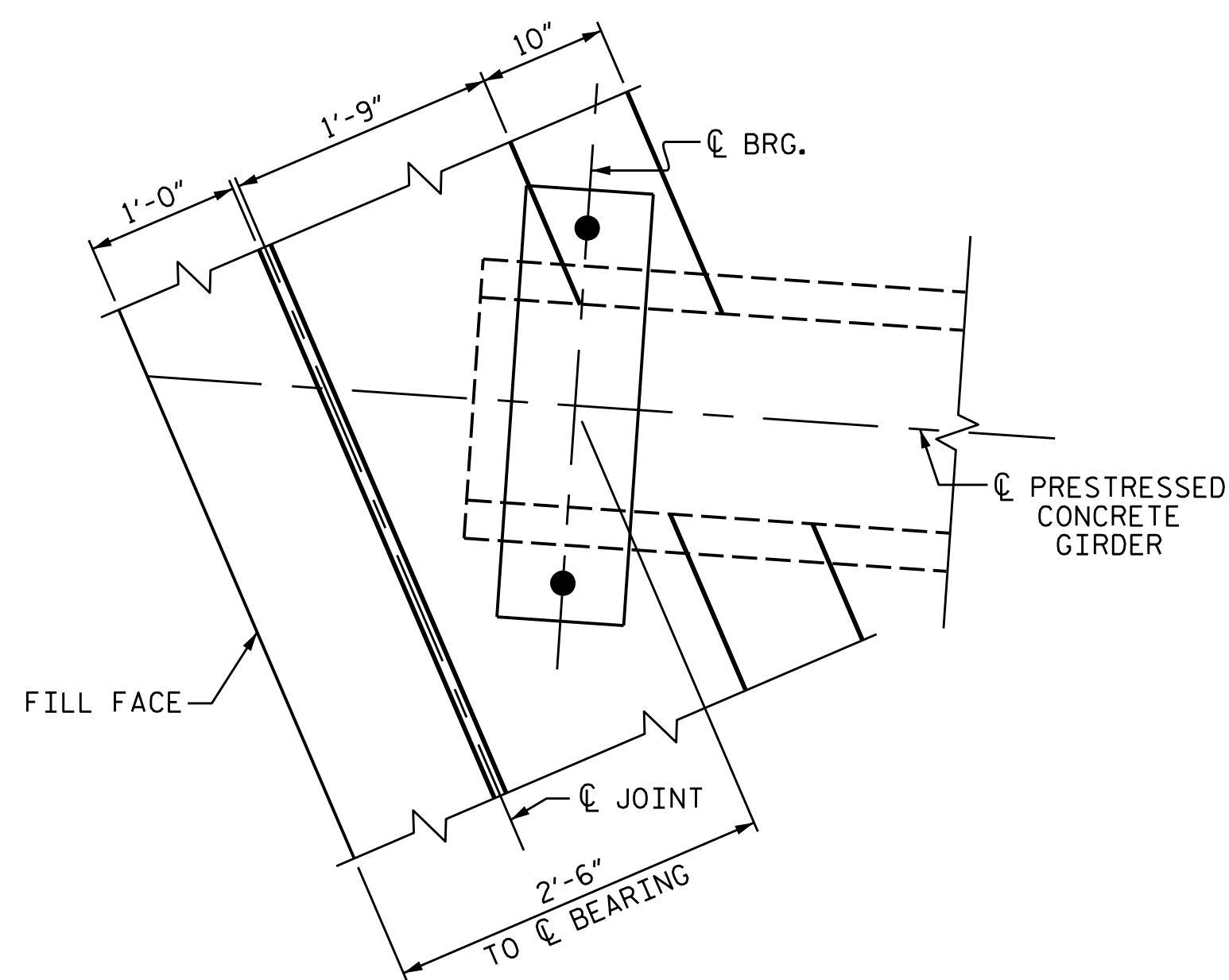
SECTION AT LINK SLAB

* METAL STAY-IN-PLACE FORMS SHALL NOT BE WELDED TO THE GIRDER FLANGES IN THE REGION OF THE SLAB.

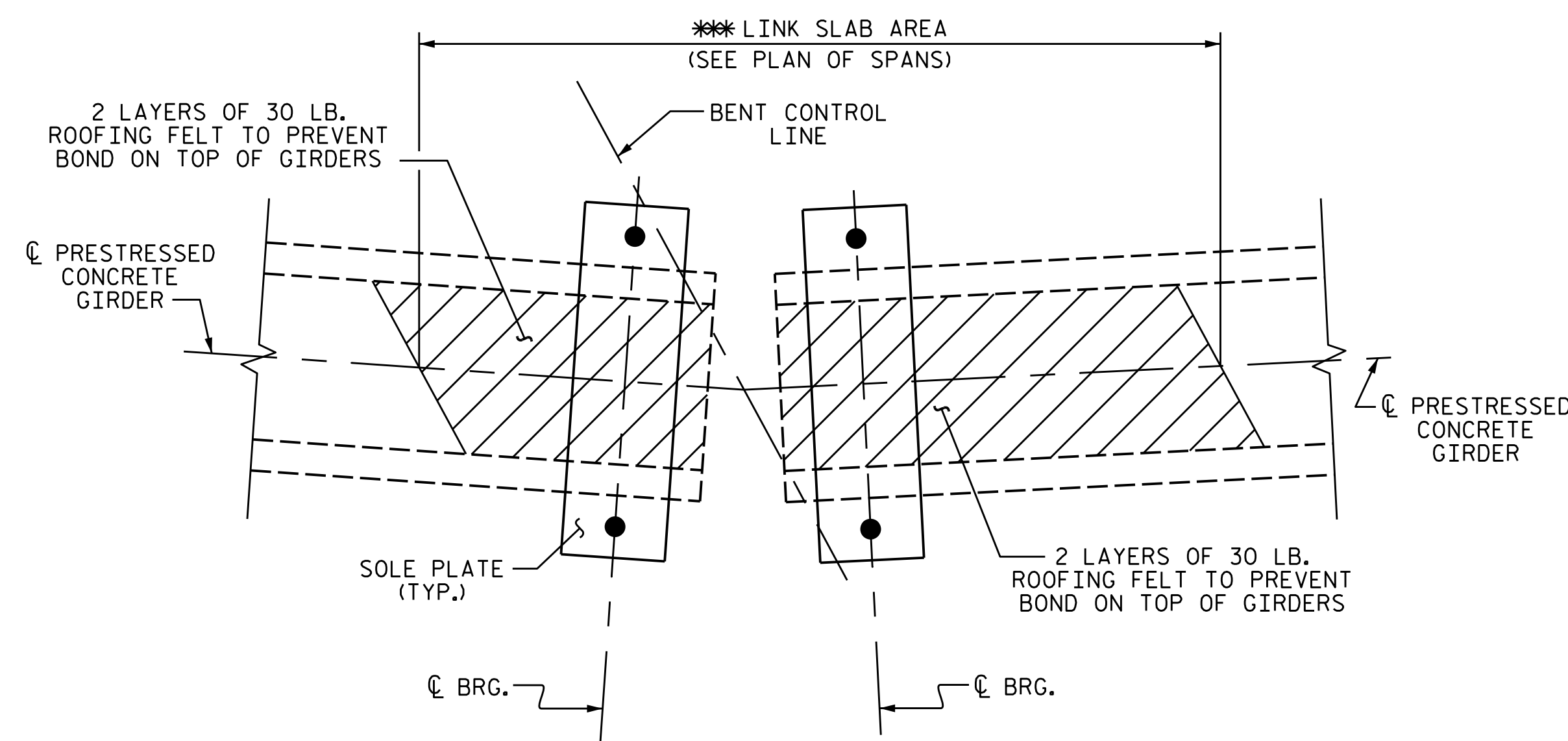


DETAIL "B"

A 1 1/2" DEEP 3/8" WIDE CONTRACTION JOINT AT BENT CONTROL LINE SHALL BE SAWN WITHIN 24 HOURS OF POURING THE DECK. THE JOINT SHALL BE FILLED WITH JOINT SEALER MATERIAL. THE JOINT SEALER MATERIAL SHALL CONFORM TO THE REQUIREMENTS OF SECTION 1028-3 OF THE STANDARD SPECIFICATIONS.



END BENT DIAPHRAGM

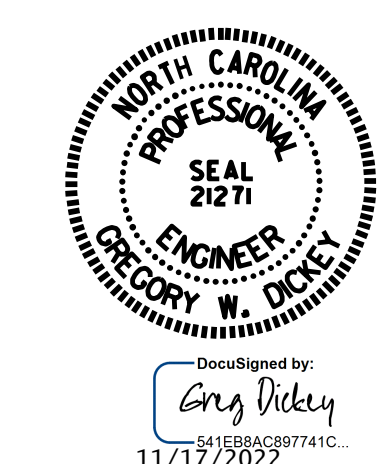


PLAN OF LINK SLAB

*** THE TOP OF GIRDER IN THE REGION OF THE LINK SLAB SHALL BE SMOOTH (NOT RAKED) AND FREE OF STIRRUPS, ANCHOR STUDS, DECK FORMWORK ATTACHMENTS, AND OVERHANG FALSEWORK/FORMWORK ATTACHMENTS.

Prepared in the Office of:
SUMMIT
 DESIGN AND ENGINEERING SERVICES
 NC FIRM LICENSE No: P-0339
 1110 Navaho Drive, Suite 600
 Raleigh, NC 27609
 Ph: 919-322-0115 Fax: 919-322-0116
 www.summitde.com

PROJECT NO. B-5989
MADISON COUNTY
 STATION: 16+18.00 -L-
 SHEET 2 OF 2



STATE OF NORTH CAROLINA
 DEPARTMENT OF TRANSPORTATION
 RALEIGH
 SUPERSTRUCTURE
 TYPICAL SECTION

DRAWN BY : KEITH D. LAYNE DATE : 09/19
 CHECKED BY : NEIL C. ROHRBAUGH DATE : 10/19
 DESIGN ENGINEER OF RECORD: G. DICKEY DATE : 6/29/22

DOCUMENT NOT CONSIDERED FINAL UNLESS ALL SIGNATURES COMPLETED

REVISIONS				SHEET NO.	
NO.	BY:	DATE:	NO.	BY:	DATE:
1			3		
2			4		
					TOTAL SHEETS
					35