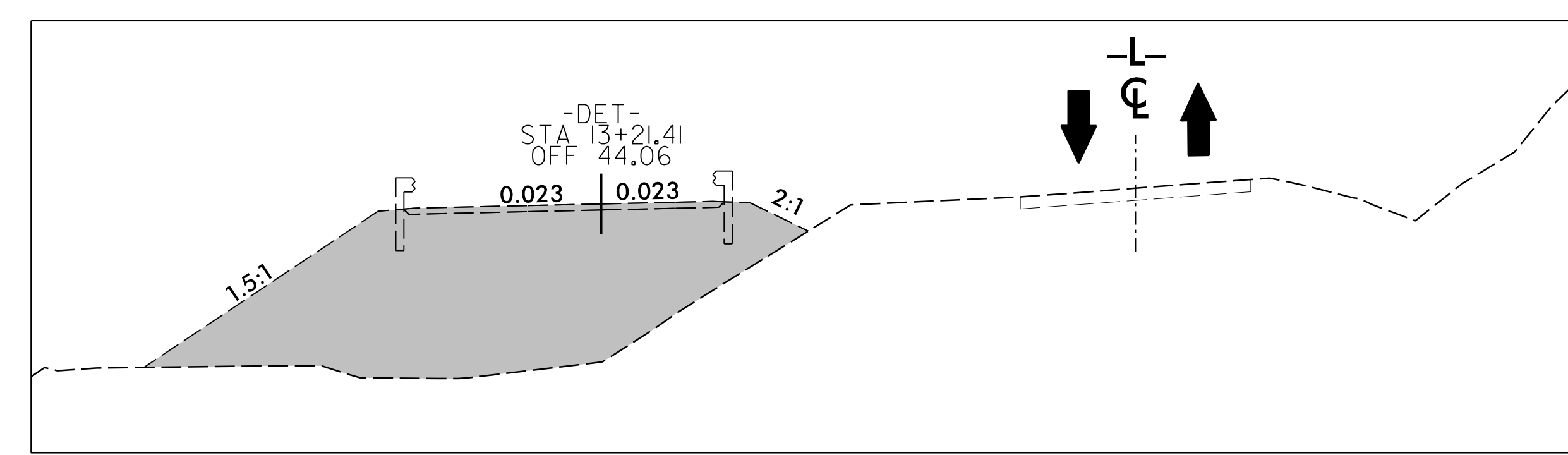
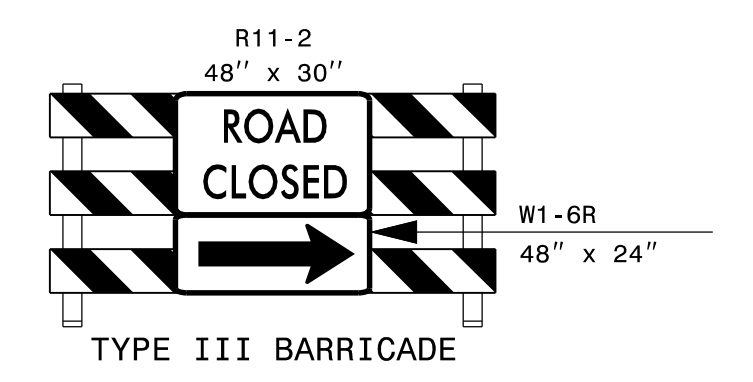
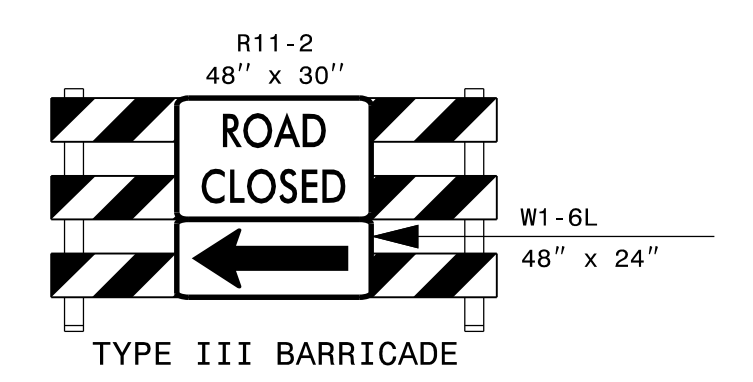
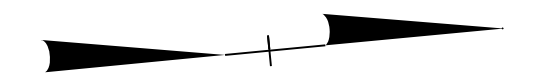


NOTES:

AT LOCATIONS SELECTED BY THE ENGINEER, THREE (3) PORTABLE CHANGEABLE MESSAGE SIGNS (CMS) ARE INCLUDED IN THE CONTRACT FOR ADVANCED WORK ZONE SIGNING ON THE ROADWAY APPROACHES TO ALERT DRIVERS OF POSSIBLE TEMPORARY LANE CLOSURES THAT ARE EXPECTED TO BE ONE (1) HOUR OR LONGER IN DURATION TO GIVE DRIVERS AN OPTION TO TURN AROUND.

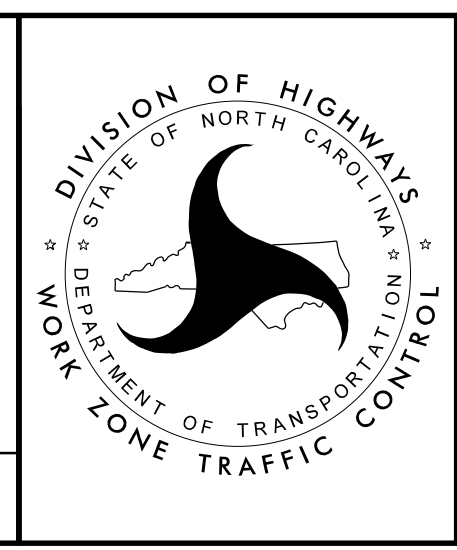


SECTION A-A
-L- STA. 15+00
-DET- STA. 13+21.41

APPROVED: *James A. Spear*
DATE: 10/31/2022

SEAL

**DOCUMENT NOT CONSIDERED FINAL
UNLESS ALL SIGNATURES COMPLETED**



PHASE I

31-OCT-2022 07:40
B-5989_TG_TMP_3.dgn
josh.fernigan