

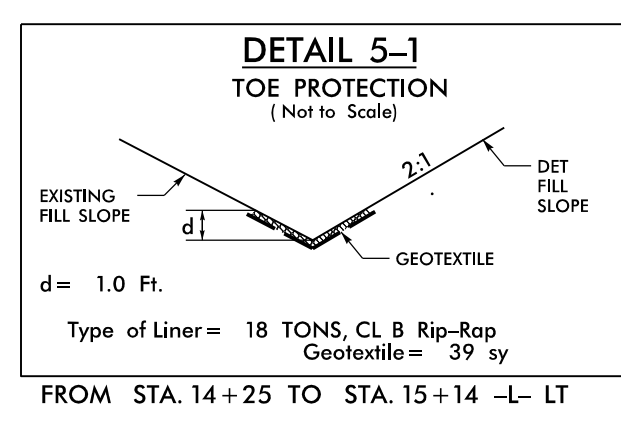
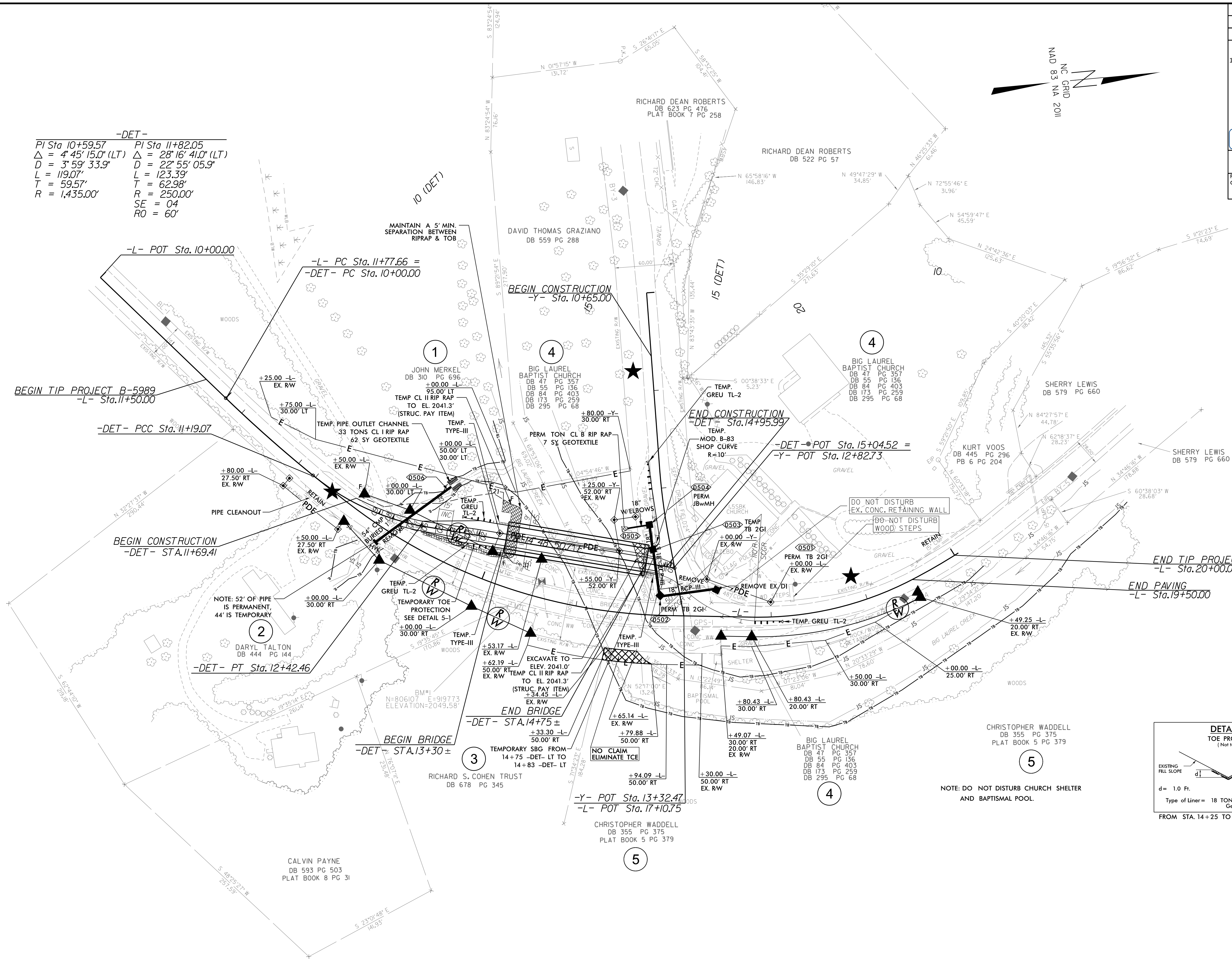
PROJECT REFERENCE NO. B-5989		SHEET NO. 5	
RW SHEET NO.			
ROADWAY DESIGN ENGINEER 10/31/2022		HYDRAULICS ENGINEER 10/31/2022	
<p>DOCUMENT NOT CONSIDERED FINAL UNLESS ALL SIGNATURES COMPLETED</p> <p>Prepared in the Office of: NC FIRM LICENSE NO: P-0359 300 Executive Ct. Hillsborough, NC 27278 (919) 732-3883 (919) 732-6676 (FAX)</p>			

SEE SHEET 6 FOR -DET- AND -Y- PROFILES

★ DENOTES TEMPORARY SIGNAL (SEE TMP-5)
V_{DET} = 30mph

-DET-

PI Sta 10+59.57	PI Sta 11+82.05
$\Delta = 4' 45" 15.0" (LT)$	$\Delta = 28' 16" 41.0" (LT)$
$D = 3' 59" 33.9"$	$D = 22' 55" 05.9"$
$L = 119.07'$	$L = 123.39'$
$T = 59.57'$	$T = 62.98'$
$R = 1,435.00'$	$R = 250.00'$
	$SE = 04'$
	$RO = 60'$



REVISIONS

31-OCT-2022 08:51
B-5989-05.dwg
lost.berndt