

AS-BUILT REPAIR QUANTITY TABLE

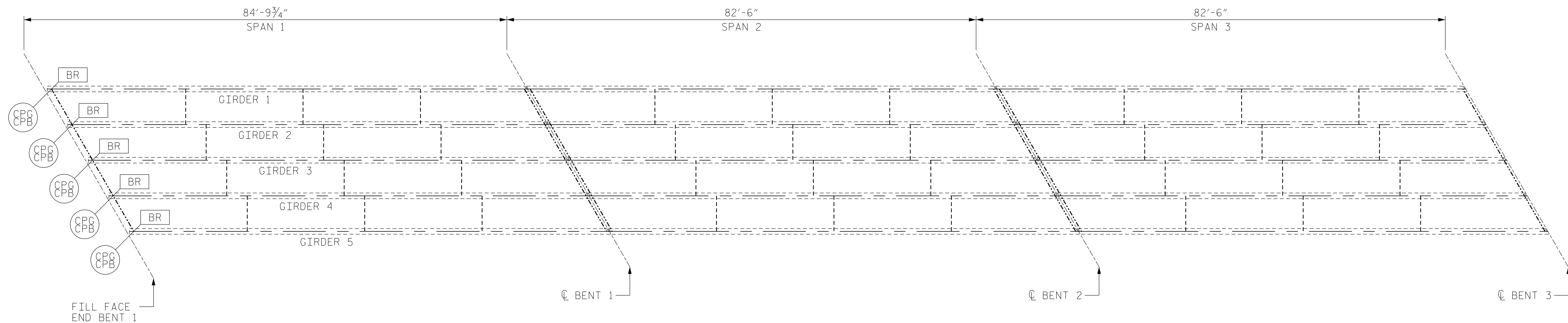
SUPERSTRUCTURE REPAIRS

| | SPAN 1 | | SPAN 2 | | SPAN 3 | |
|--|----------|--------|----------|--------|----------|--------|
| | ESTIMATE | ACTUAL | ESTIMATE | ACTUAL | ESTIMATE | ACTUAL |
| CLEANING & PAINTING EXISTING BEARINGS WITH HRSCA | 5 EA | | -- EA | | -- EA | |

*FOR QUANTITIES FOR BEARING REPAIRS, SEE BEARING REPAIR SHEET.

LEGEND:

- CPG CLEAN AND PAINT GIRDER ENDS (5 LF)
- CPB CLEAN AND PAINT BEARING
- BR * BEARING REPAIRS



PARTIAL PLAN

NOTES:

- REPAIR LOCATIONS AND ESTIMATED QUANTITIES ARE GIVEN WITH THE BEST INFORMATION AVAILABLE. IF ADDITIONAL REPAIRS NOT SHOWN ON THE DRAWINGS ARE DEEMED NECESSARY BY THE ENGINEER, THE ENGINEER WILL NOTE ON THE DRAWINGS THE APPROXIMATE LOCATIONS AND DESCRIPTION OF THE REPAIRS AND ADJUST THE ACTUAL QUANTITIES ENTERED INTO THE TABLE ABOVE.
- FOR CLEANING & PAINTING EXISTING BEARINGS WITH HRSCA, SEE SPECIAL PROVISIONS.
- FOR BEARING REPAIRS, SEE "BEARING REPAIRS" SHEET.
- FOR ZONE PAINTING OF EXISTING STRUCTURE, SEE SPECIAL PROVISIONS.
- FOR DETAILS OF CLEANING AND PAINTING GIRDER ENDS (CPG), SEE "MISCELLANEOUS REPAIRS" SHEET.

PROJECT NO. I-5915B
IREDELL COUNTY
 BRIDGE NO. 480007

SHEET 1 OF 4



STATE OF NORTH CAROLINA
 DEPARTMENT OF TRANSPORTATION
 RALEIGH

SUPERSTRUCTURE REPAIRS

| | |
|---|----------------|
| DRAWN BY : ALLEN J. MCSWAIN | DATE : 01/2022 |
| CHECKED BY : JACOB H. DUKE | DATE : 01/2022 |
| DESIGN ENGINEER OF RECORD: DIEGO A. AGUIRRE | DATE : 01/2022 |

4/21/2022
 I5915B.SMU.SSR01.480007.dgn
 daquirre

DOCUMENT NOT CONSIDERED
 FINAL UNLESS ALL
 SIGNATURES COMPLETED

| REVISIONS | | | | | | SHEET NO. |
|-----------|-----|-------|-----|-----|-------|--------------|
| NO. | BY: | DATE: | NO. | BY: | DATE: | S6-9 |
| 1 | | | 3 | | | TOTAL SHEETS |
| 2 | | | 4 | | | 24 |