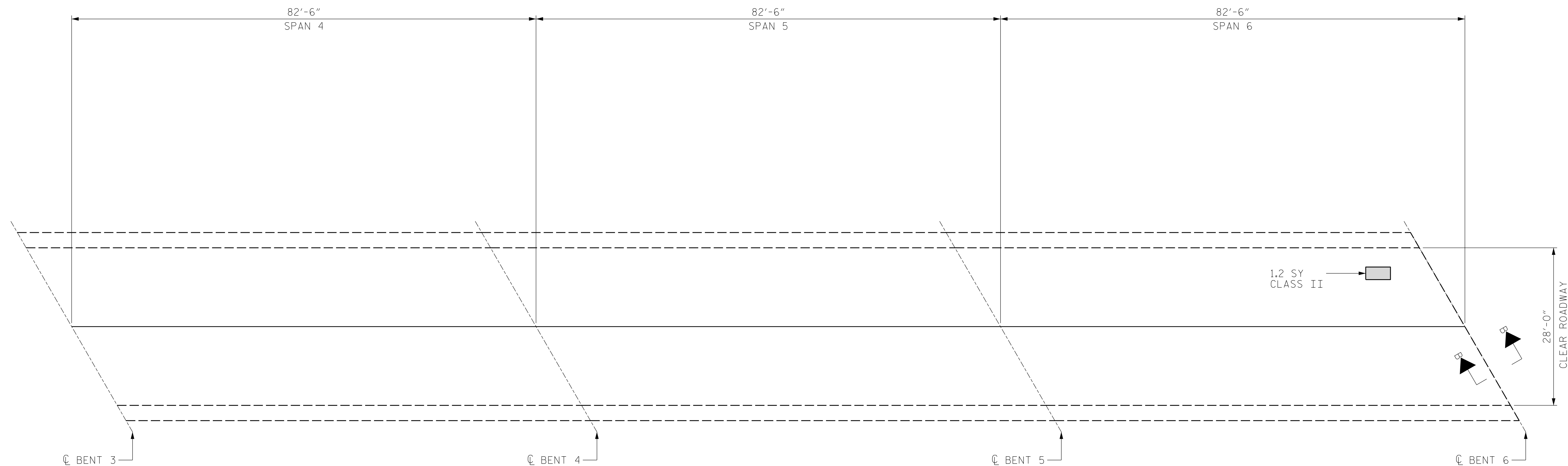
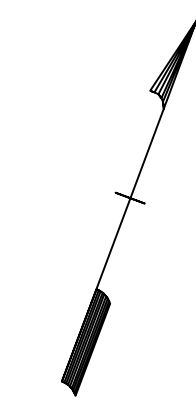


AS-BUILT REPAIR QUANTITY TABLE

DECK REPAIRS

	SPAN 4		SPAN 5		SPAN 6	
	ESTIMATE	ACTUAL	ESTIMATE	ACTUAL	ESTIMATE	ACTUAL
CLASS II SURFACE PREPARATION	-- SY		-- SY		1.2 SY	
CLASS III SURFACE PREPARATION	-- SY		-- SY		-- SY	
ASPHALT CONCRETE SURFACE COURSE, TYPE S9.5C	29 TONS		29 TONS		29 TONS	
ASPHALT BINDER FOR PLANT MIX	1.8 TONS		1.8 TONS		1.8 TONS	



PARTIAL PLAN

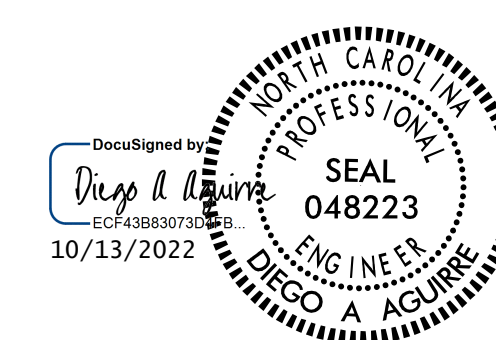
NOTES:

- PRIOR TO SURFACE PREPARATION, REMOVE ALL LOOSE, DISINTEGRATED, UNSOUND OR CONTAMINATED CONCRETE FROM THE BRIDGE DECK.
- FOR CONCRETE FOR DECK REPAIR, SEE SPECIAL PROVISIONS.
- WORK THIS SHEET WITH "JOINT DETAILS" SHEET.
- WORK THIS SHEET WITH "TYPICAL SECTION" SHEET.
- FOR NEW ASPHALT PLACEMENT, SEE STANDARD SPECIFICATIONS.

REPAIR LOCATIONS AND ESTIMATED QUANTITIES ARE GIVEN WITH THE BEST INFORMATION AVAILABLE. IF ADDITIONAL REPAIRS NOT SHOWN ON THE DRAWINGS ARE DEEMED NECESSARY BY THE ENGINEER, THE ENGINEER WILL NOTE ON THE DRAWINGS THE APPROXIMATE LOCATIONS AND DESCRIPTION OF THE REPAIRS AND ADJUST THE ACTUAL QUANTITIES ENTERED INTO THE AS-BUILT REPAIR QUANTITY TABLE.

PROJECT NO. I-5915B
IREDELL COUNTY
 BRIDGE NO. 480007

SHEET 2 OF 4



STATE OF NORTH CAROLINA
 DEPARTMENT OF TRANSPORTATION
 RALEIGH

PLAN OF SPANS DECK REPAIRS

ASPHALT CONCRETE SURFACE COURSE, TYPE S9.5C

DEFECTS (SEE PLAN CALLOUT FOR DETAILS)

DRAWN BY : ALLEN J. MCSWAIN DATE : 01/2022
 CHECKED BY : JACOB H. DUKE DATE : 01/2022
 DESIGN ENGINEER OF RECORD: DIEGO A. AGUIRRE DATE : 01/2022



DOCUMENT NOT CONSIDERED FINAL UNLESS ALL SIGNATURES COMPLETED

KCA
 KISINGER CAMPO & ASSOCIATES
 301 FAYETTEVILLE ST., SUITE 1500
 RALEIGH, NC 27601 (919) 882-7839
 NC FIRM LICENSE: C-1506

REVISIONS						SHEET NO.
NO.	BY:	DATE:	NO.	BY:	DATE:	
1			3			S6-4
2			4			TOTAL SHEETS 24