

# AS-BUILT REPAIR QUANTITY TABLE

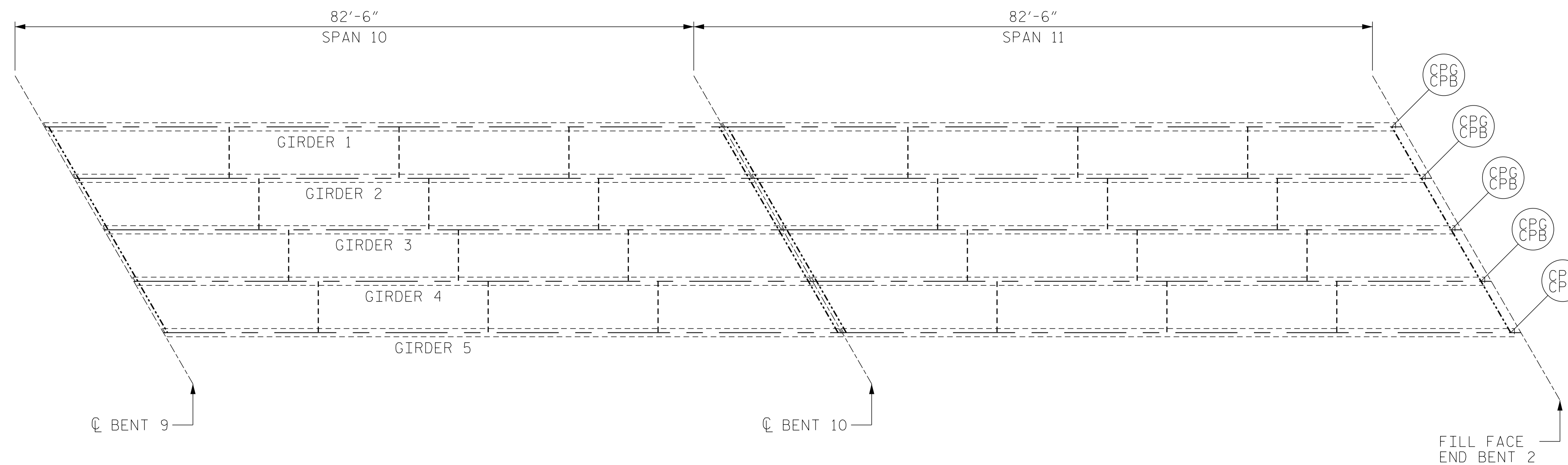
## SUPERSTRUCTURE REPAIRS

	SPAN 10		SPAN 11	
	ESTIMATE	ACTUAL	ESTIMATE	ACTUAL
CLEANING & PAINTING EXISTING BEARINGS WITH HRSCA	-- EA		5 EA	

\*FOR QUANTITIES FOR BEARING REPAIRS, SEE BEARING REPAIR SHEET.

### LEGEND:

- CPG CLEAN AND PAINT GIRDER ENDS (5 LF)
- CPB CLEAN AND PAINT BEARING
- BR \* BEARING REPAIRS



PARTIAL PLAN

### NOTES:

REPAIR LOCATIONS AND ESTIMATED QUANTITIES ARE GIVEN WITH THE BEST INFORMATION AVAILABLE. IF ADDITIONAL REPAIRS NOT SHOWN ON THE DRAWINGS ARE DEEMED NECESSARY BY THE ENGINEER, THE ENGINEER WILL NOTE ON THE DRAWINGS THE APPROXIMATE LOCATIONS AND DESCRIPTION OF THE REPAIRS AND ADJUST THE ACTUAL QUANTITIES ENTERED INTO THE TABLE ABOVE.

FOR CLEANING & PAINTING EXISTING BEARINGS WITH HRSCA, SEE SPECIAL PROVISIONS.

FOR BEARING REPAIRS, SEE "BEARING REPAIRS" SHEET.

FOR ZONE PAINTING OF EXISTING STRUCTURE, SEE SPECIAL PROVISIONS.

FOR DETAILS OF CLEANING AND PAINTING GIRDER ENDS (CPG), SEE "MISCELLANEOUS REPAIRS" SHEET.

PROJECT NO. I-5915B  
IREDELL COUNTY  
 BRIDGE NO. 480006

SHEET 4 OF 4



**KISINGER CAMPO & ASSOCIATES**  
 301 FAYETTEVILLE ST., SUITE 1500  
 RALEIGH, NC 27601 (919) 882-7839  
 NC FIRM LICENSE: C-1506

STATE OF NORTH CAROLINA  
 DEPARTMENT OF TRANSPORTATION  
 RALEIGH

## SUPERSTRUCTURE REPAIRS

DRAWN BY : ALLEN J. MCSWAIN DATE : 01/2022  
 CHECKED BY : JACOB H. DUKE DATE : 01/2022  
 DESIGN ENGINEER OF RECORD: DIEGO A. AGUIRRE DATE : 01/2022

4/21/2022  
 I5915B.SMU.SSR04.480006.dgn  
 daquirre

DOCUMENT NOT CONSIDERED  
 FINAL UNLESS ALL  
 SIGNATURES COMPLETED

REVISIONS						SHEET NO.
NO.	BY:	DATE:	NO.	BY:	DATE:	S5-12
1			3			TOTAL SHEETS
2			4			24