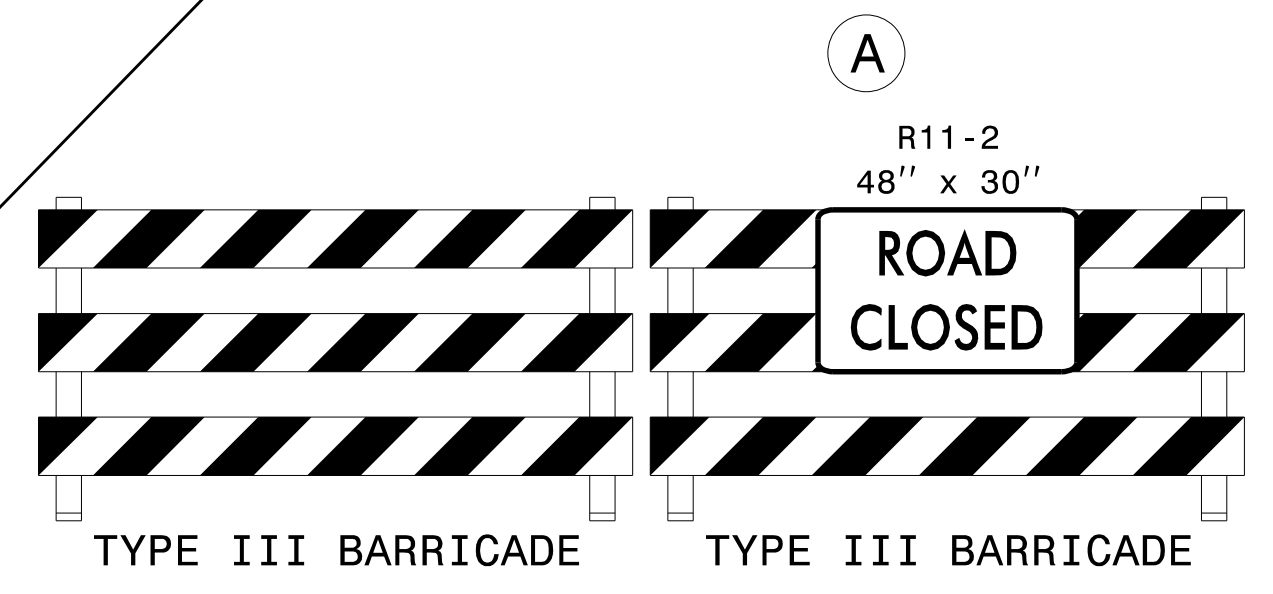


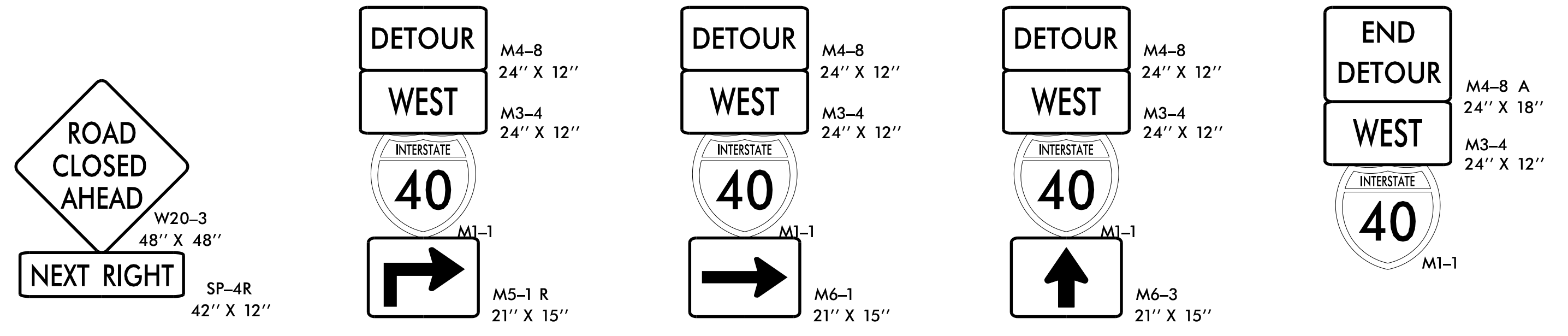
MESSAGE NO. 1	MESSAGE NO. 2
I-40 WB RAMP CLOSED	FOLLOW I-40 WB DETOUR

CHANGEABLE MESSAGE SIGN



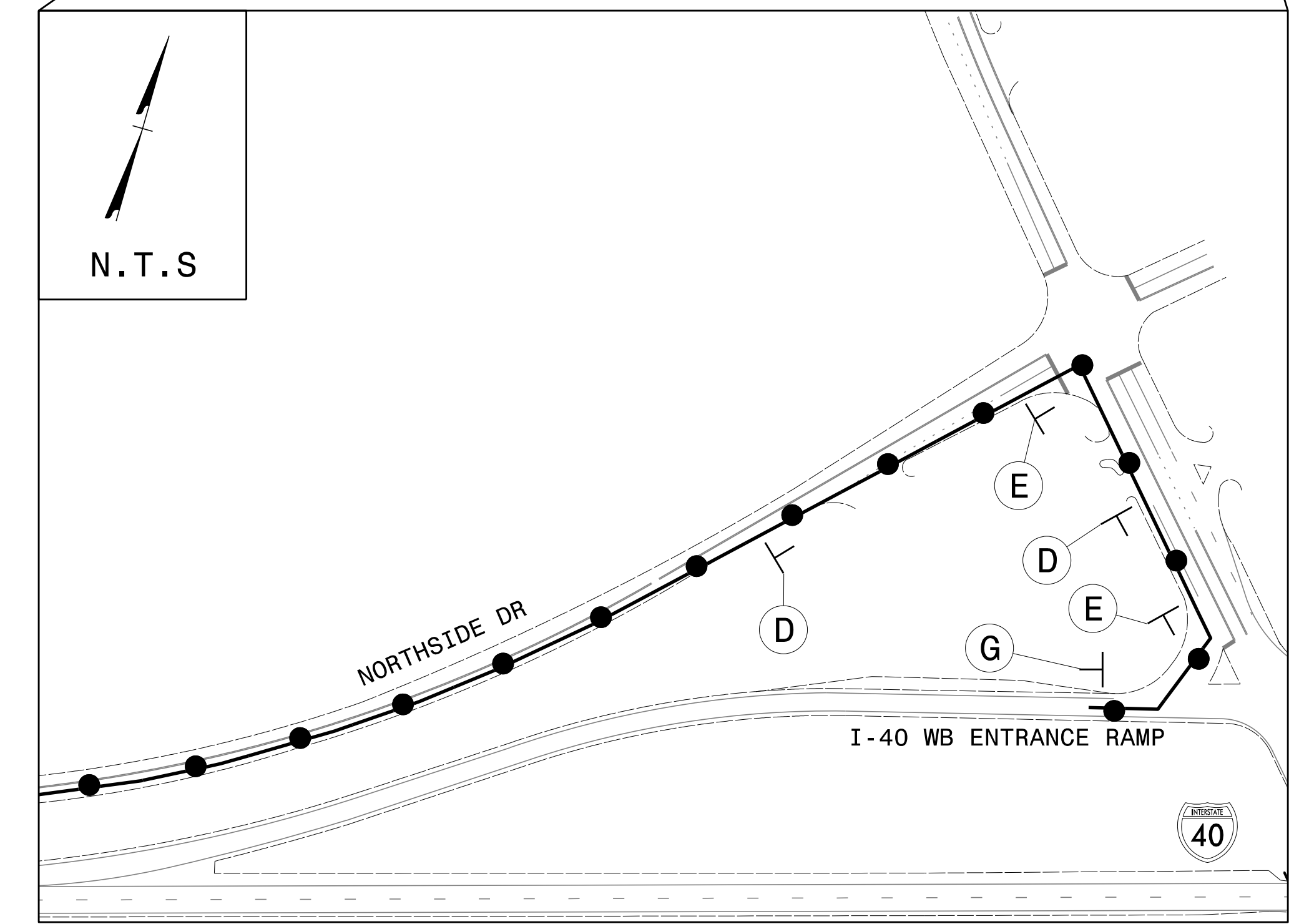
DETOUR DESCRIPTION:

NORTH: W FRONT ST TO TAYLORSVILLE RD TO NORTHSIDE DR TO N CENTER ST TO I-40 WB RAMP



NOTES:

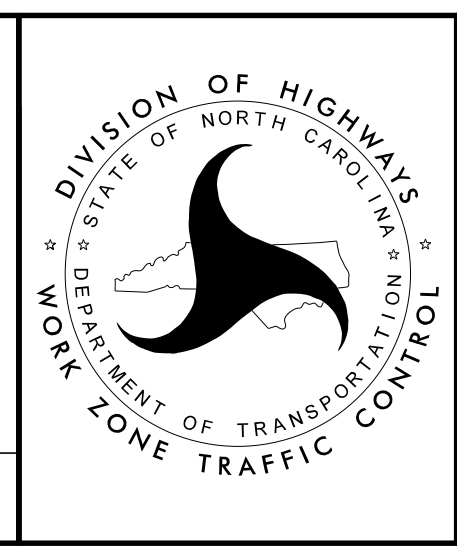
1. TRAFFIC CONTROL DEVICES (A) THRU (G) SHALL BE INSTALLED PER ENGINEER'S INSTRUCTIONS.
2. ALL SIGNAGE ON NORTHSIDE DR IS SPACED AT 350 FOOT INTERVALS UNLESS OTHERWISE NOTED.
3. ALL SIGNAGE ON ALL OTHER ROADS ARE SPACED AT 200 FOOT INTERVALS UNLESS OTHERWISE NOTED.
4. USE THIS SHEET IN CONJUNCTION WITH RSD 1101.01 SHEET 3 OF 3, TMP-45, AND TMP-48.



APPROVED: *Jacob Duke*
 DATE: 4/26/2022

SEAL

DOCUMENT NOT CONSIDERED FINAL UNLESS ALL SIGNATURES COMPLETED



DIVISION OF HIGHWAYS
 DEPARTMENT OF TRANSPORTATION
 WORK ZONE TRAFFIC CONTROL

I-40 WB
 LOOP RAMP DETOUR

4/26/2022 15915B_TC_TMP_DETOUR_I40_WB_LOOP_RAMP.dgn User: jidebone