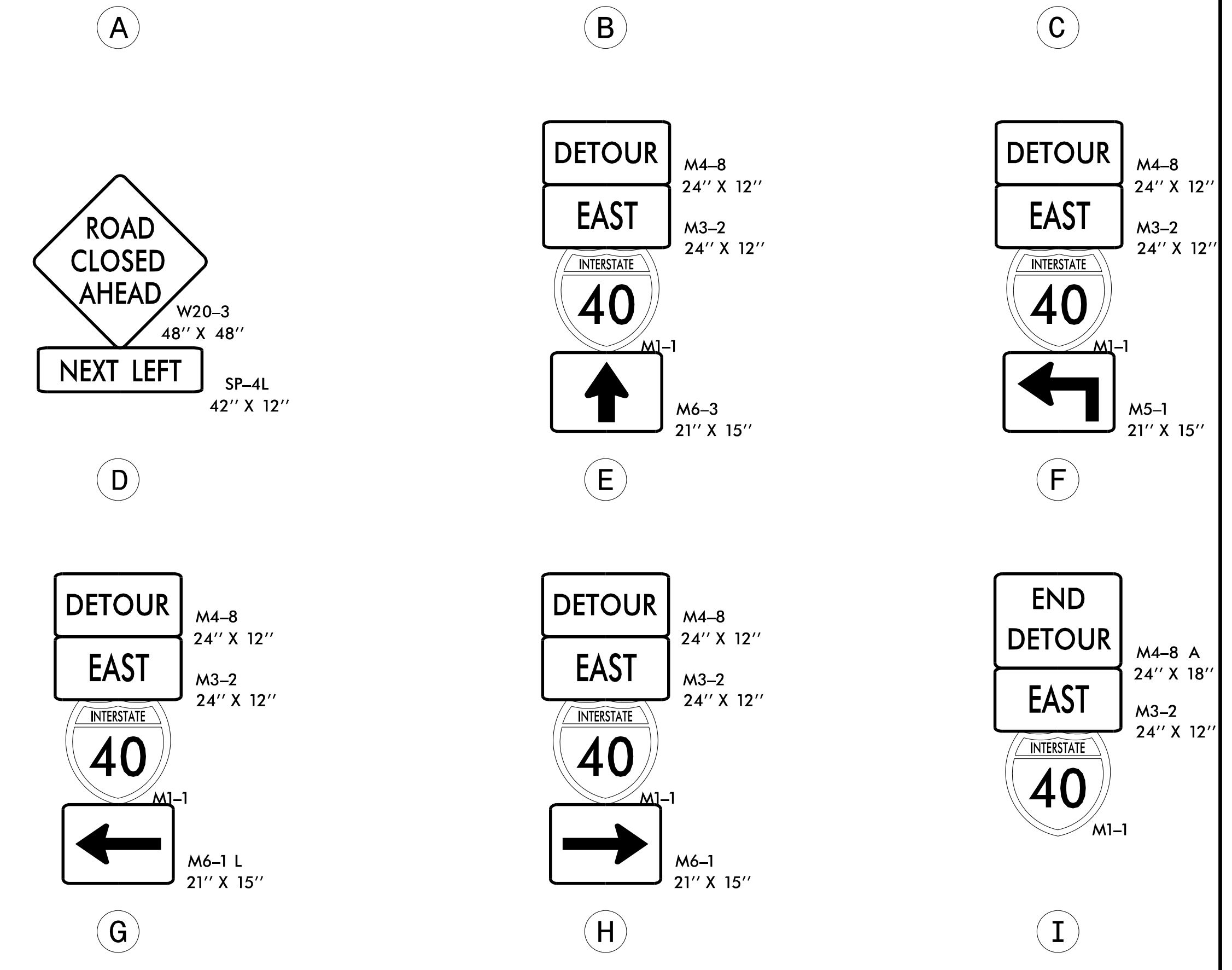
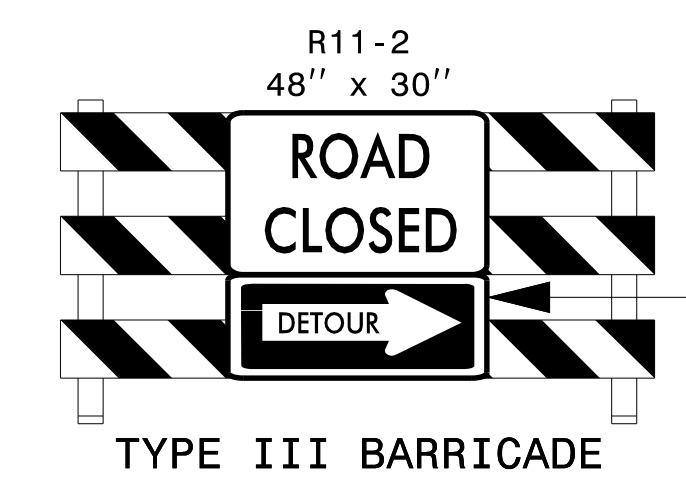


MESSAGE NO. 1	MESSAGE NO. 2
I - 40 EB RAMP CLOSED	FOLLOW I - 40 EB DETOUR

CHANGEABLE MESSAGE SIGN



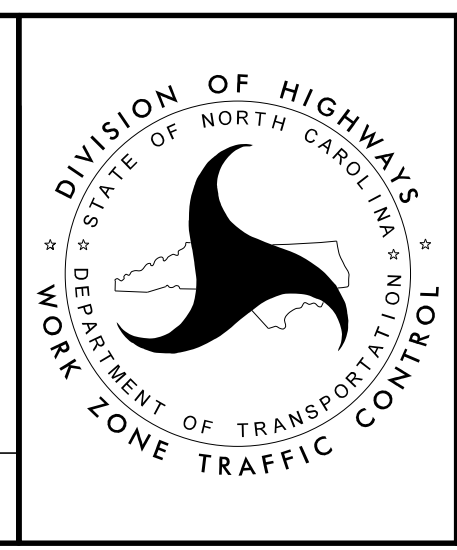
**NOTES:**

1. TRAFFIC CONTROL DEVICES (A) THRU (I) SHALL BE INSTALLED PER ENGINEER'S INSTRUCTIONS.
2. ALL SIGN SPACING IS 350' UNLESS OTHERWISE NOTED.
3. USE THIS SHEET IN CONJUNCTION WITH TMP-5.

APPROVED: *Jacob Duke*  
 DATE: 4/26/2022

SEAL

DOCUMENT NOT CONSIDERED FINAL UNLESS ALL SIGNATURES COMPLETED



DIVISION OF HIGHWAYS  
 DEPARTMENT OF TRANSPORTATION  
 WORK ZONE TRAFFIC CONTROL

I40 EB RAMP AT 1ST ST. OFFSITE DETOUR

4/26/2022 15915B\_TC\_TMP\_DETOUTR I40 EB RAMP AT 1ST STREET.dgn User: jdebone