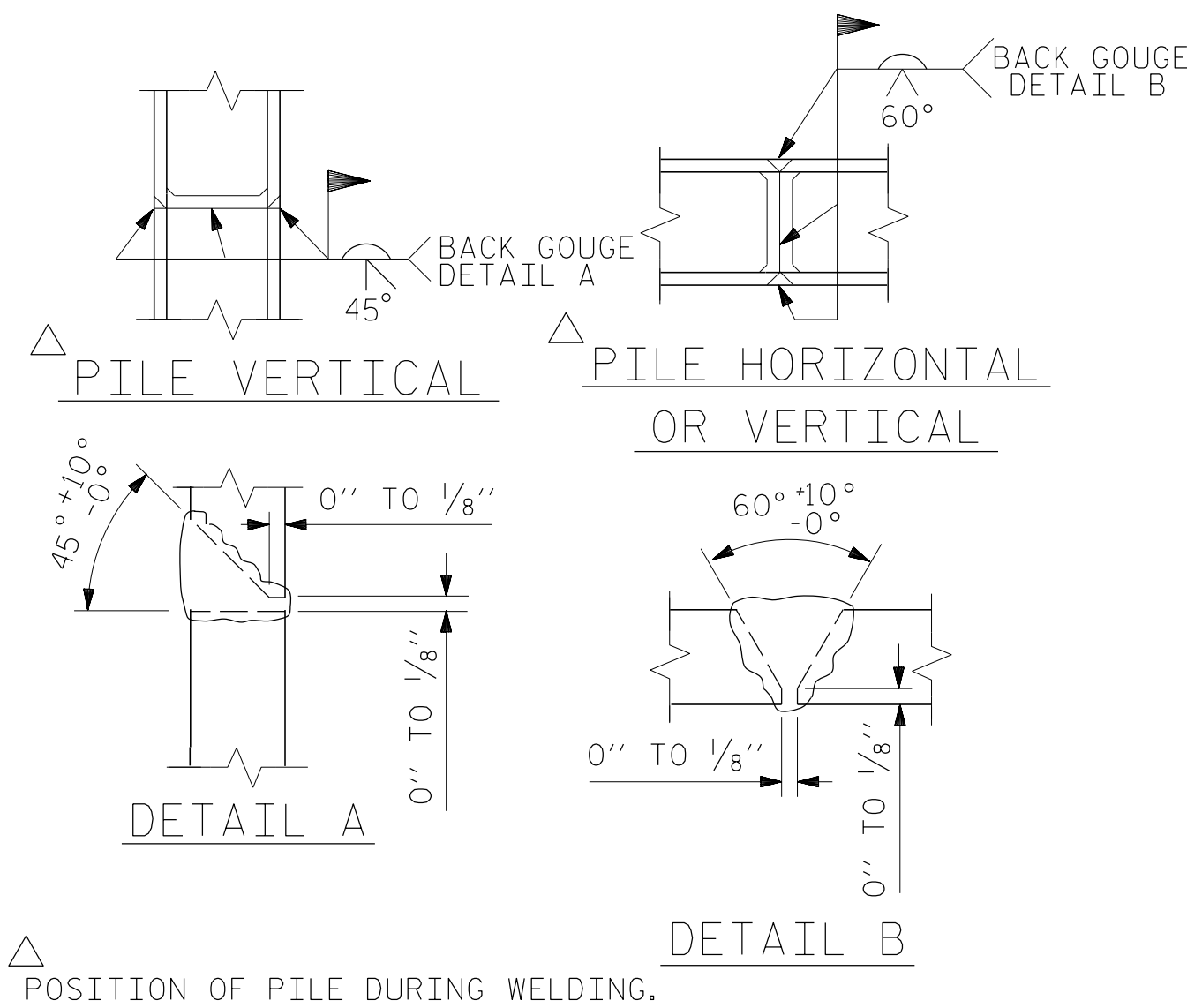


BAGGED STONE AND PIPE SHALL BE PLACED IMMEDIATELY AFTER COMPLETION OF END BENT EXCAVATION. PIPE MAY BE EITHER CONCRETE, CORRUGATED STEEL, CORRUGATED ALUMINUM ALLOY, OR CORRUGATED PLASTIC. PERFORATED PIPE WILL NOT BE ALLOWED.

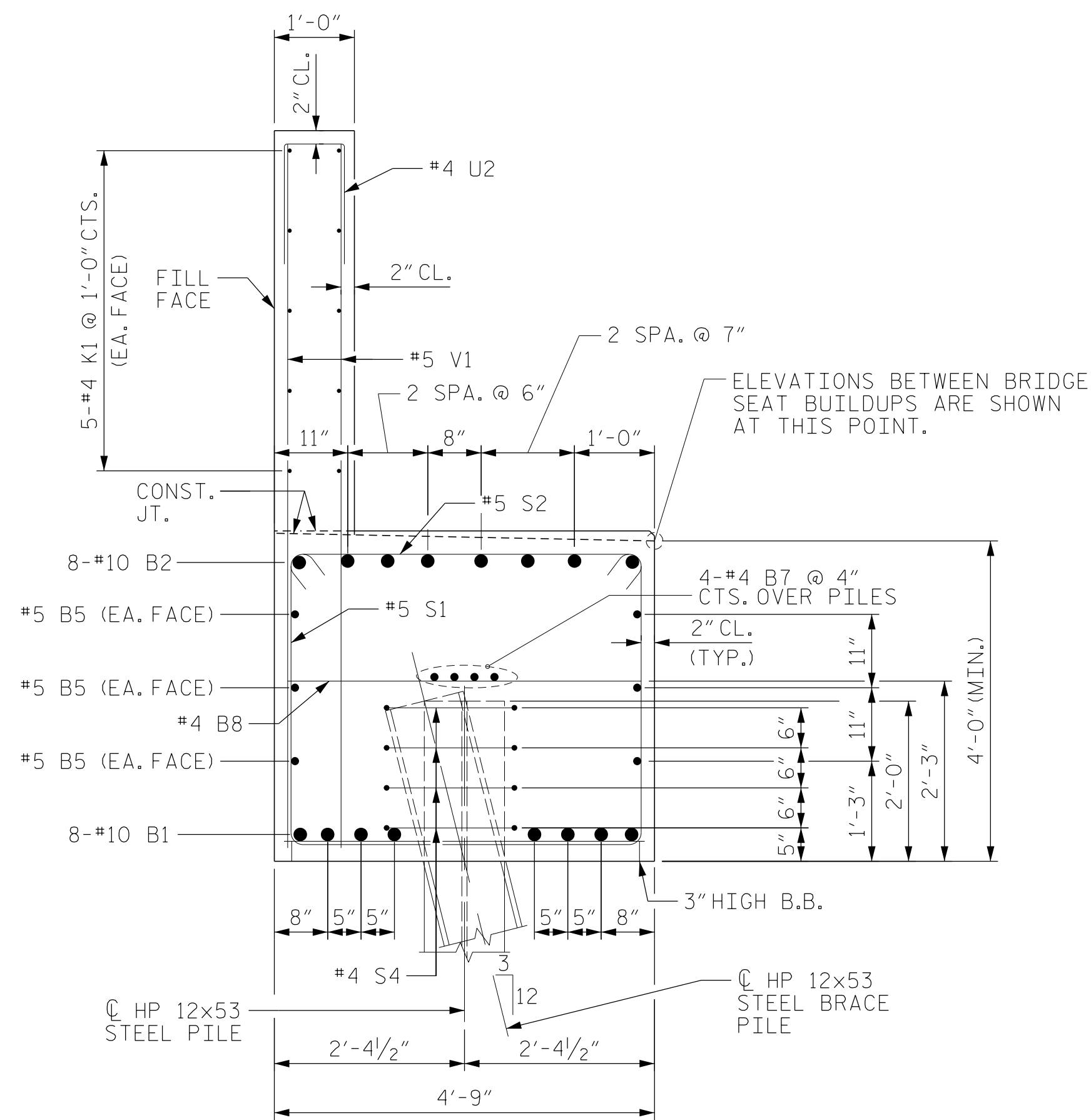
BAGGED STONE SHALL REMAIN IN PLACE UNTIL THE ENGINEER DIRECTS THAT IT BE REMOVED. THE CONTRACTOR SHALL REMOVE AND DISPOSE OF SILT ACCUMULATIONS AT BAGGED STONE WHEN SO DIRECTED BY THE ENGINEER. BAGS SHALL BE REMOVED AND REPLACED WHENEVER THE ENGINEER DETERMINES THAT THEY HAVE DETERIORATED AND LOST THEIR EFFECTIVENESS.

NO SEPARATE PAYMENT WILL BE MADE FOR THIS WORK AND THE ENTIRE COST OF THIS WORK SHALL BE INCLUDED IN THE UNIT CONTRACT PRICE BID FOR THE SEVERAL PAY ITEMS.

### TEMPORARY DRAINAGE AT END BENT

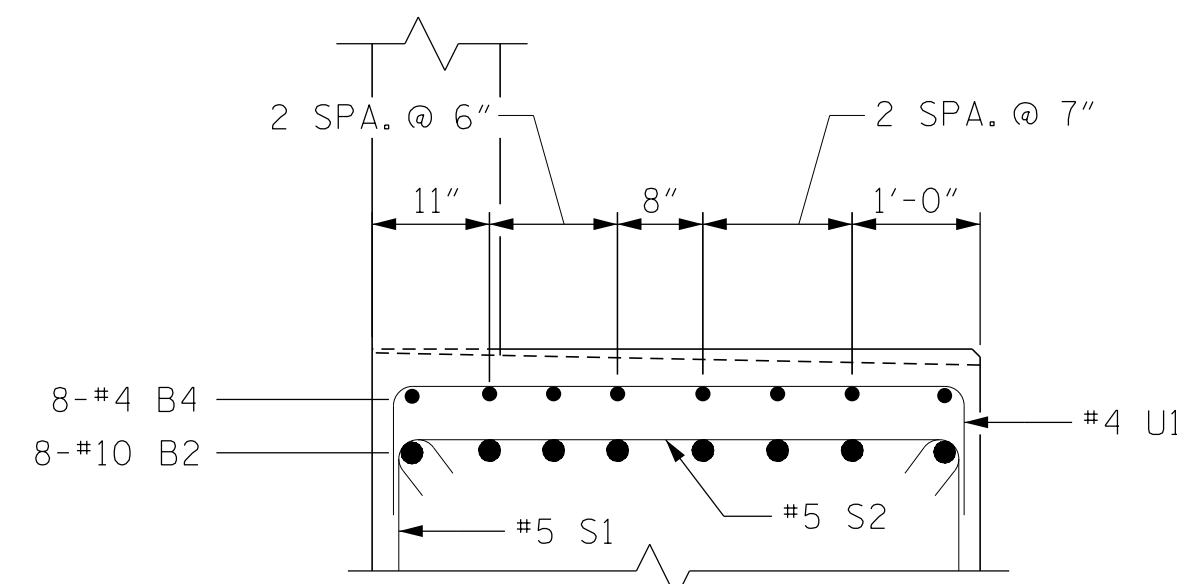


### PILE SPLICE DETAILS

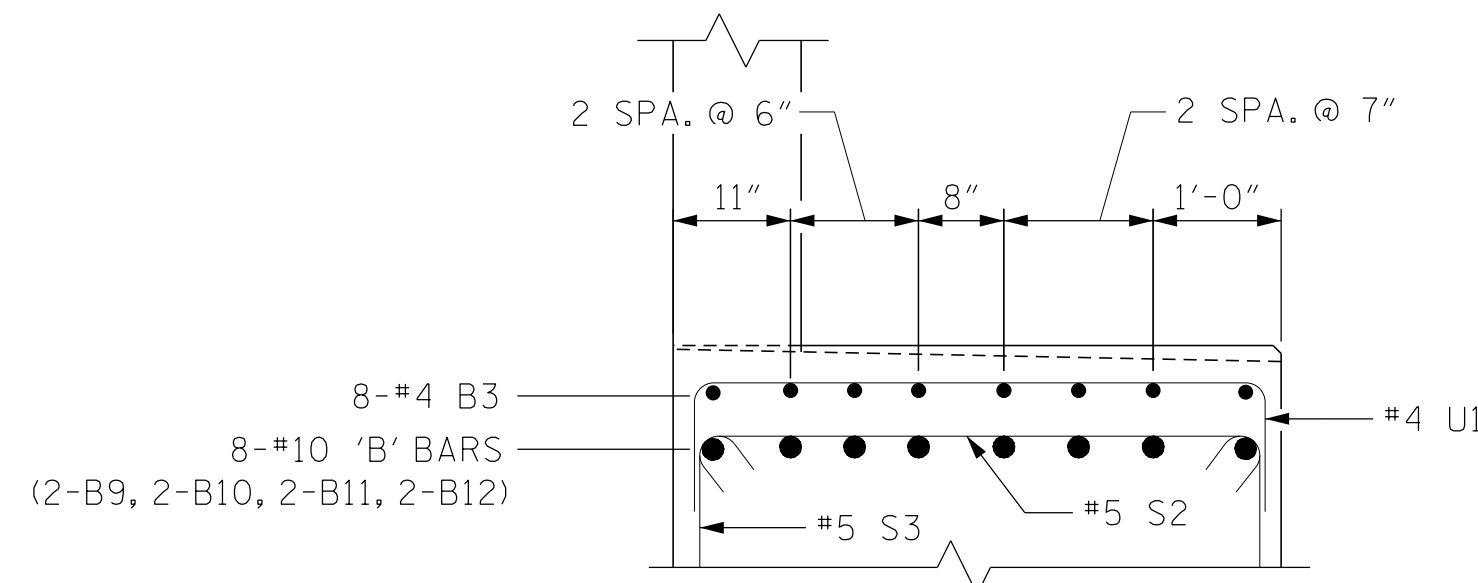


### SECTION A-A

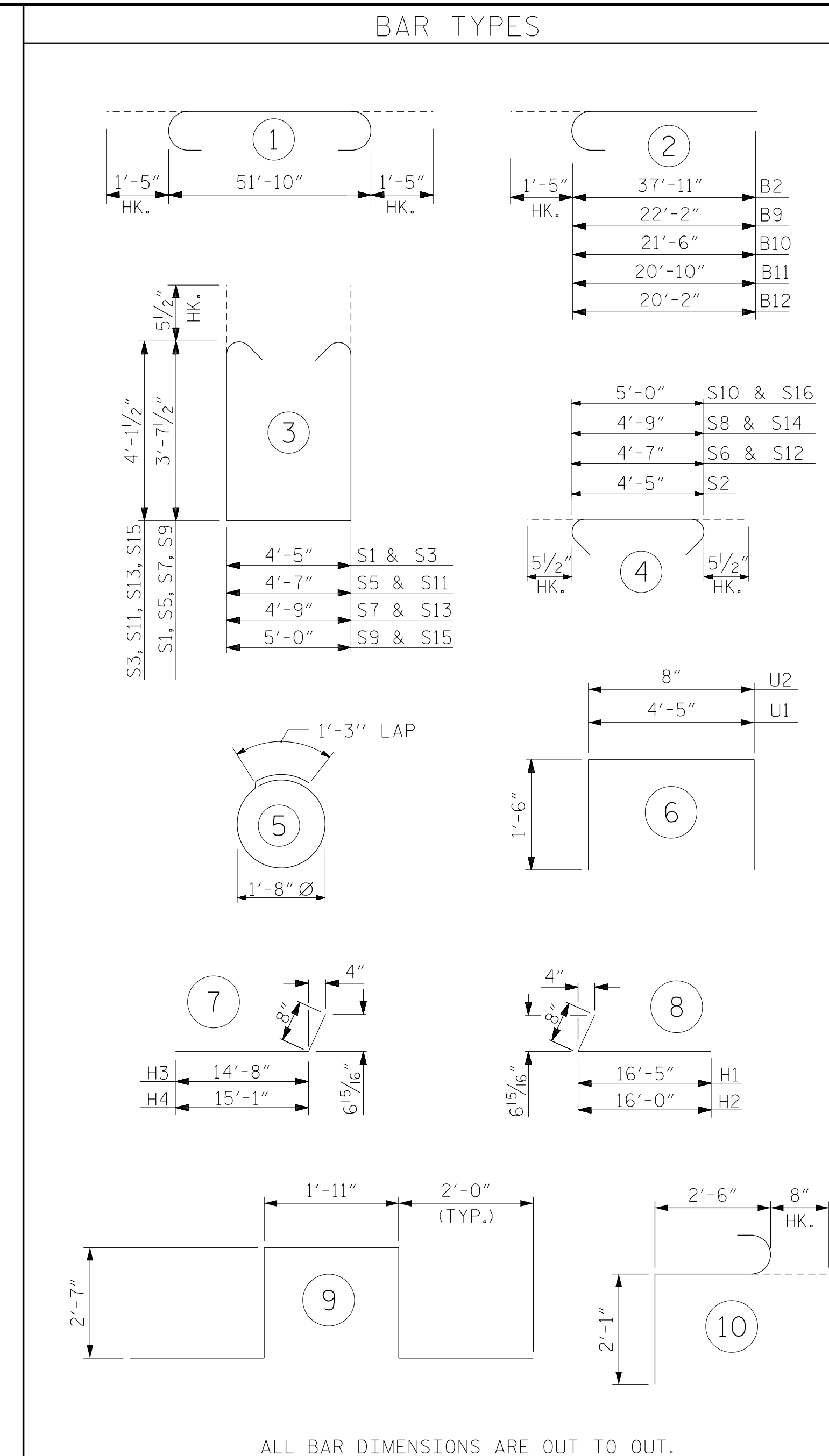
PILE COLLAR NOT SHOWN FOR CLARITY.



### PARTIAL SECTION B-B



### PARTIAL SECTION C-C



ALL BAR DIMENSIONS ARE OUT TO OUT.

### BILL OF MATERIAL

#### END BENT 2

BAR	NO.	SIZE	TYPE	LENGTH	WEIGHT
B1	8	#10	1	54'-8"	1,882
B2	8	#10	2	39'-4"	1,354
B3	8	#4	STR	10'-4"	55
B4	8	#4	STR	12'-5"	66
B5	6	#5	STR	51'-10"	324
B6	2	#5	STR	21'-6"	45
B7	8	#4	STR	27'-2"	145
B8	14	#4	STR	4'-5"	41
B9	2	#10	2	23'-7"	203
B10	2	#10	2	22'-11"	197
B11	2	#10	2	22'-3"	191
B12	2	#10	2	21'-7"	186
B13	8	#4	STR	4'-2"	22

H1	13	#4	8	17'-1"	148
H2	13	#4	8	16'-8"	145
H3	12	#4	7	15'-4"	123
H4	12	#4	7	15'-9"	126

K1	20	#4	STR	27'-3"	364
K2	8	#4	STR	2'-11"	16

S1	36	#5	3	12'-7"	472
S2	60	#5	4	5'-4"	334
S3	24	#5	3	13'-7"	340
S4	28	#4	5	6'-6"	122
S5	1	#5	3	12'-9"	13
S6	1	#5	4	5'-6"	6
S7	1	#5	3	12'-11"	13
S8	1	#5	4	5'-8"	6
S9	1	#5	3	13'-2"	14
S10	1	#5	4	5'-11"	6
S11	1	#5	3	13'-9"	14
S12	1	#5	4	5'-6"	6
S13	1	#5	3	13'-11"	15
S14	1	#5	4	5'-8"	6
S15	1	#5	3	14'-2"	15
S16	1	#5	4	5'-11"	6
S17	6	#6	9	11'-1"	100
S18	6	#6	10	5'-3"	47

U1	21	#4	6	7'-5"	104
U2	45	#4	6	3'-8"	110

V1	90	#5	STR	9'-2"	860
V2	18	#5	STR	11'-4"	213
V3	22	#5	STR	11'-6"	264
V4	14	#5	STR	10'-2"	148
V5	23	#5	STR	10'-4"	248

REINFORCING STEEL 9,115 LBS.

CLASS A CONCRETE BREAKDOWN

POUR #1 CAP, LOWER PART OF WINGS, & COLLARS 48.4 C.Y.

POUR #2 BACKWALL & UPPER PART OF WINGS 18.3 C.Y.

TOTAL CLASS A CONCRETE 66.7 C.Y.

PROJECT NO. BR-0070

CASWELL COUNTY

STATION: 30+57.00 -L-

SHEET 3 OF 3

STATE OF NORTH CAROLINA  
DEPARTMENT OF TRANSPORTATION  
RALEIGH  
SUBSTRUCTURE  
END BENT 2  
SECTION AND DETAILS



DocuSigned by:  
Jeffrey C. Wilson  
844C3D590F442A  
10/10/2022

DOCUMENT NOT CONSIDERED  
FINAL UNLESS ALL  
SIGNATURES COMPLETED

Firm License No. C-1051  
223 S West St,  
Suite 1100  
Raleigh, NC 27603  
T 919.380.8750  
www.stewartinc.com

STEWART

REVISIONS						SHEET NO.
NO.	BY:	DATE:	NO.	BY:	DATE:	5-36
1			3			TOTAL SHEETS
2			4			39

DRAWN BY: J. WILSON DATE: 10/22  
CHECKED BY: D. RUGGLES DATE: 10/22  
DESIGN ENGINEER OF RECORD: J. WILSON DATE: 10/22

BR-0070  
10/10/2022  
BR-0070-SMU.E6.160061.dgn  
USER:j.wilson