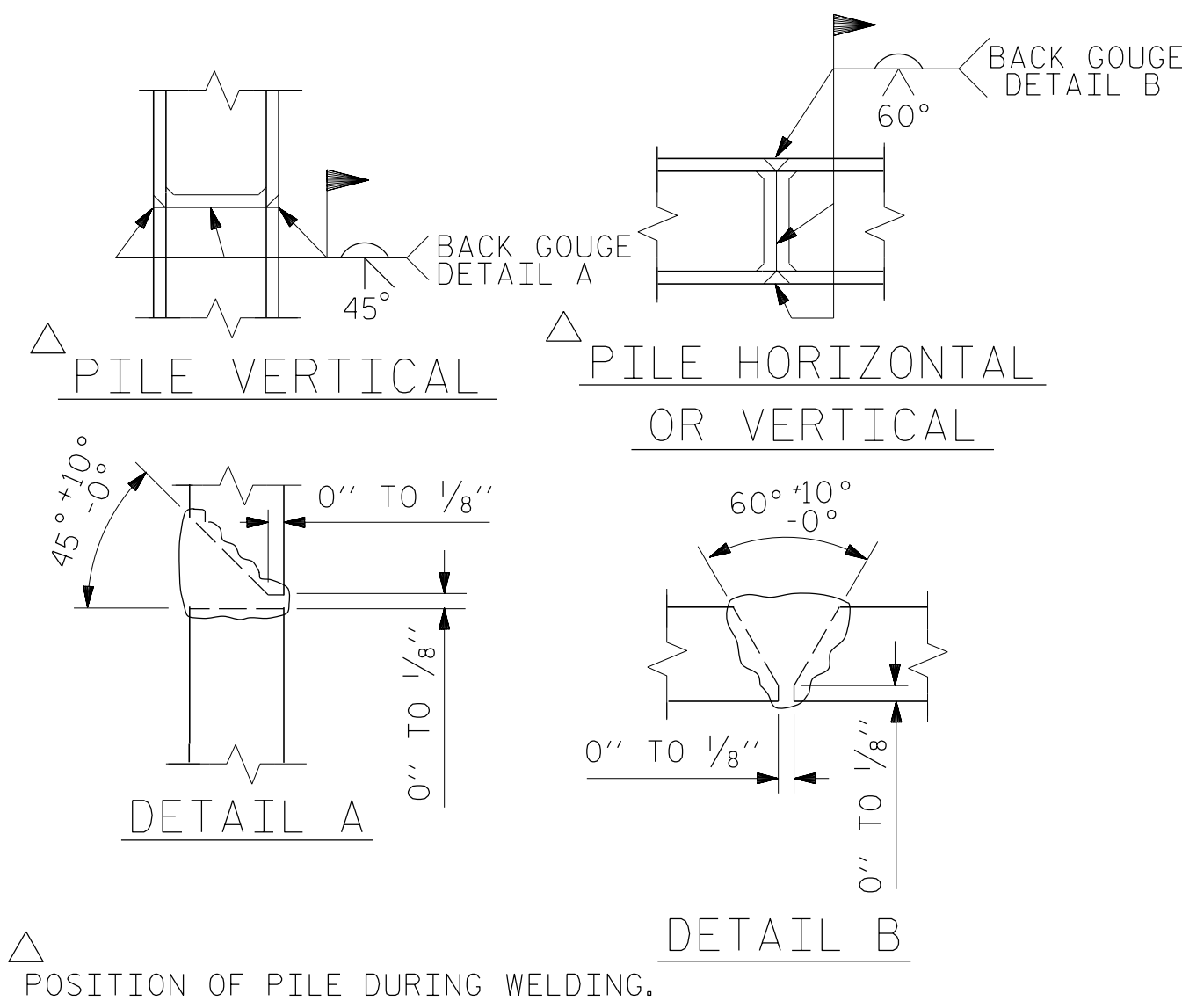


BAGGED STONE AND PIPE SHALL BE PLACED IMMEDIATELY AFTER COMPLETION OF END BENT EXCAVATION. PIPE MAY BE EITHER CONCRETE, CORRUGATED STEEL, CORRUGATED ALUMINUM ALLOY, OR CORRUGATED PLASTIC. PERFORATED PIPE WILL NOT BE ALLOWED.

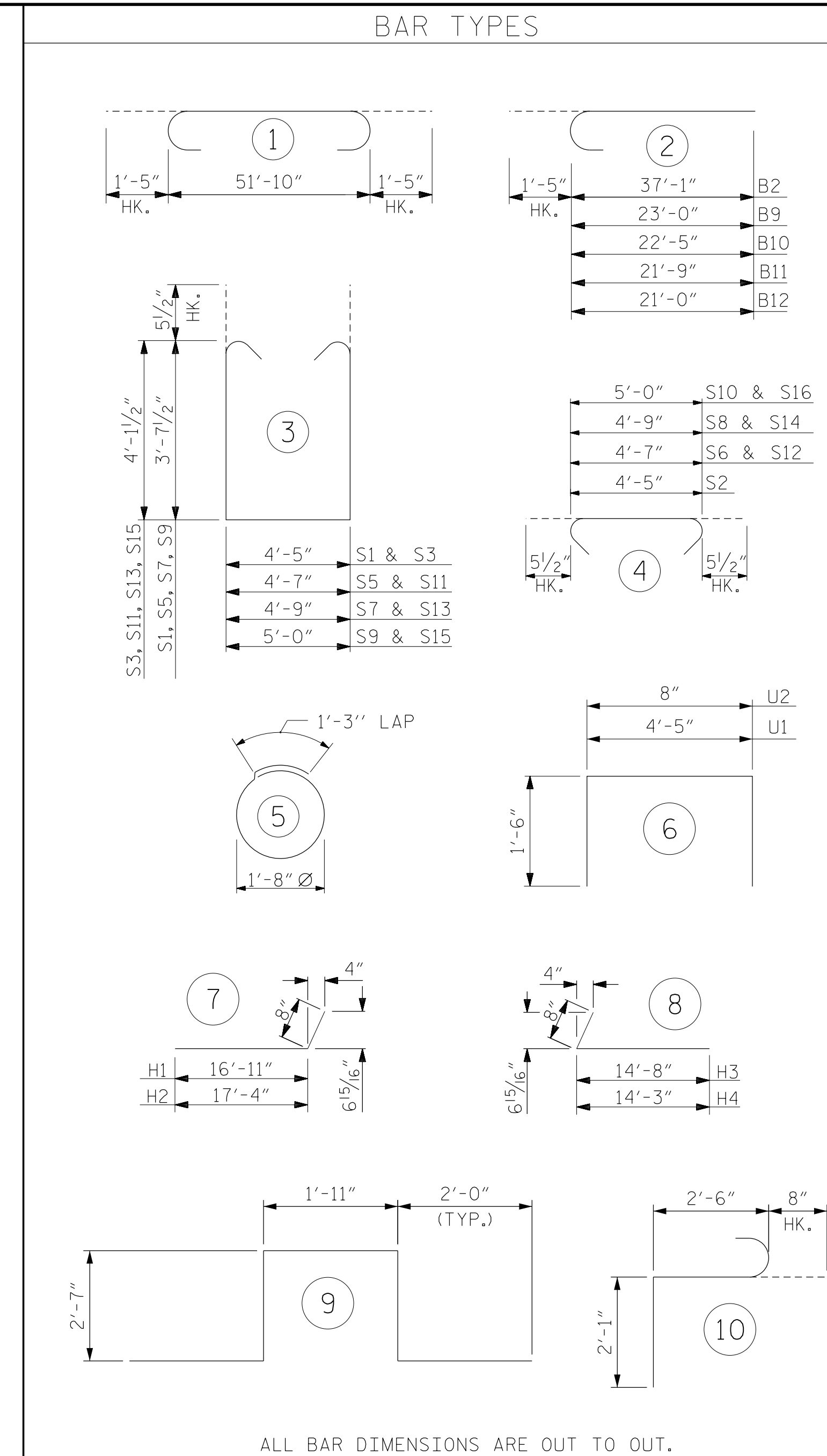
BAGGED STONE SHALL REMAIN IN PLACE UNTIL THE ENGINEER DIRECTS THAT IT BE REMOVED. THE CONTRACTOR SHALL REMOVE AND DISPOSE OF SILT ACCUMULATIONS AT BAGGED STONE WHEN SO DIRECTED BY THE ENGINEER. BAGS SHALL BE REMOVED AND REPLACED WHENEVER THE ENGINEER DETERMINES THAT THEY HAVE DETERIORATED AND LOST THEIR EFFECTIVENESS.

NO SEPARATE PAYMENT WILL BE MADE FOR THIS WORK AND THE ENTIRE COST OF THIS WORK SHALL BE INCLUDED IN THE UNIT CONTRACT PRICE BID FOR THE SEVERAL PAY ITEMS.

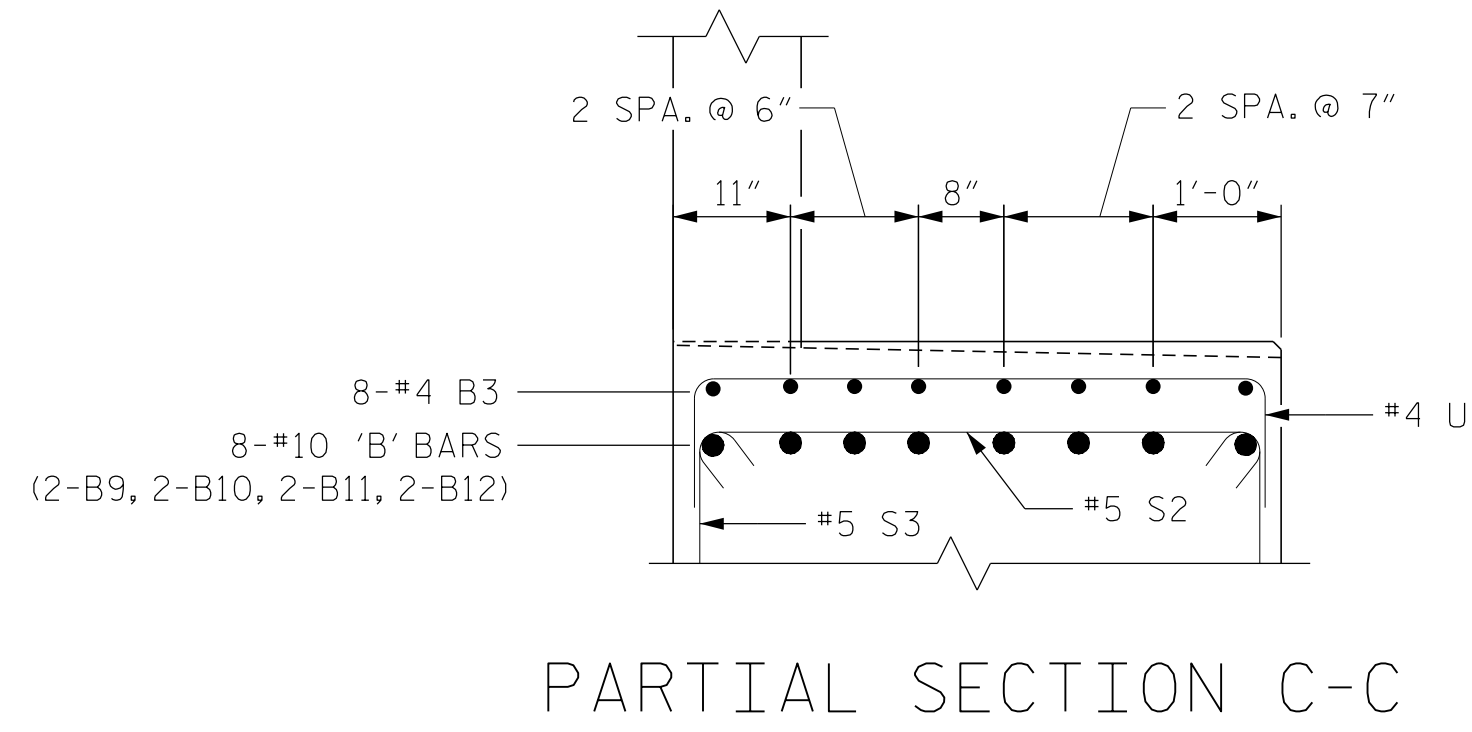
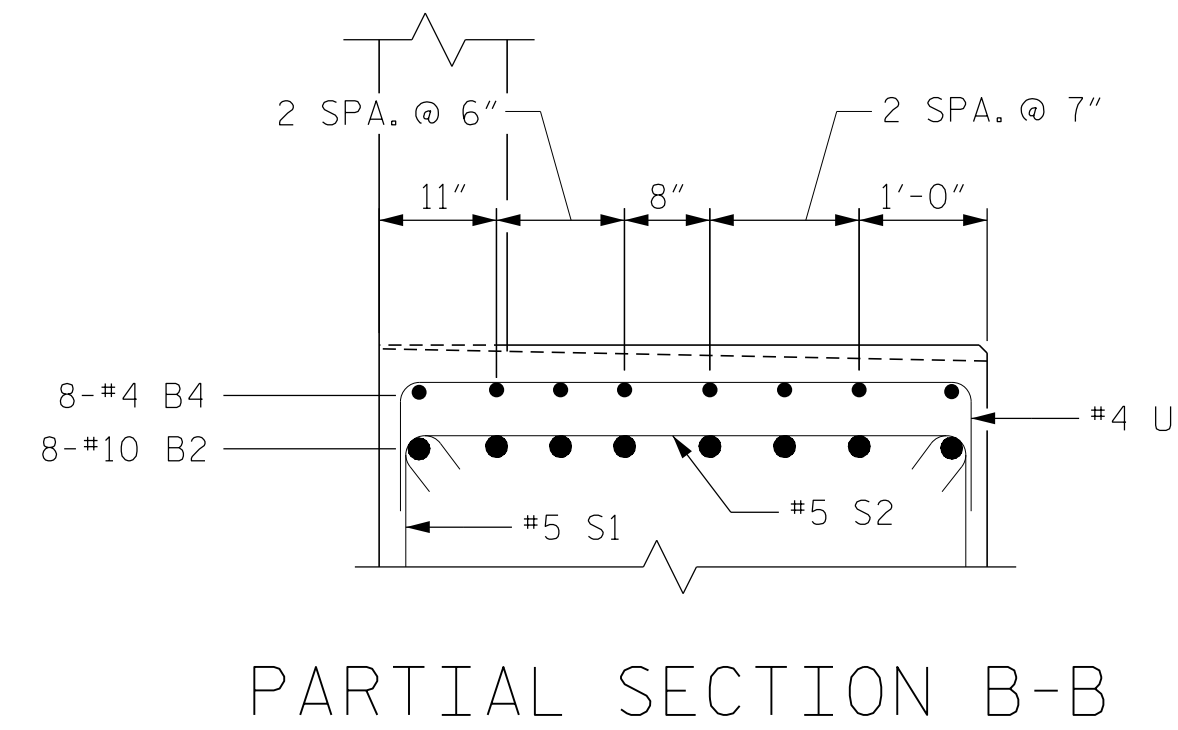
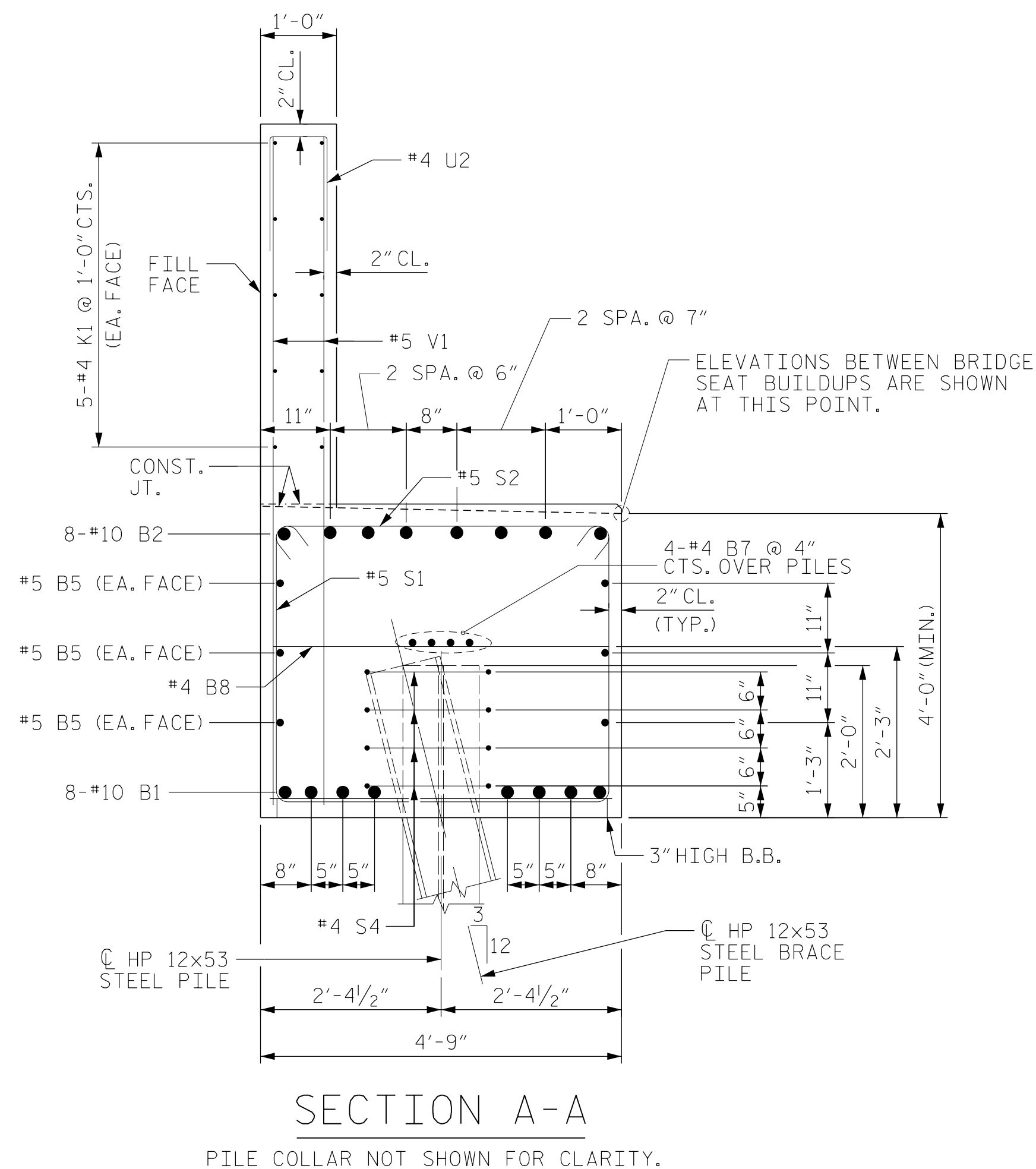
TEMPORARY DRAINAGE AT END BENT



PILE SPLICE DETAILS



BILL OF MATERIAL					
END BENT 1					
BAR	NO.	SIZE	TYPE	LENGTH	WEIGHT
B1	8	#10	1	54'-8"	1,882
B2	8	#10	2	38'-6"	1,325
B3	8	#4	STR	10'-7"	57
B4	8	#4	STR	12'-5"	66
B5	6	#5	STR	51'-10"	324
B6	2	#5	STR	21'-9"	45
B7	8	#4	STR	27'-2"	145
B8	14	#4	STR	4'-5"	41
B9	2	#10	2	24'-5"	210
B10	2	#10	2	23'-10"	205
B11	2	#10	2	23'-2"	199
B12	2	#10	2	22'-5"	193
B13	8	#4	STR	4'-2"	22
H1	13	#4	7	17'-7"	153
H2	13	#4	7	18'-0"	156
H3	12	#4	8	15'-4"	123
H4	12	#4	8	14'-11"	120
K1	20	#4	STR	27'-3"	364
K2	8	#4	STR	2'-11"	16
S1	35	#5	3	12'-7"	459
S2	60	#5	4	5'-4"	334
S3	25	#5	3	13'-7"	354
S4	28	#4	5	6'-6"	122
S5	1	#5	3	12'-9"	13
S6	1	#5	4	5'-6"	6
S7	1	#5	3	12'-11"	13
S8	1	#5	4	5'-8"	6
S9	1	#5	3	13'-2"	14
S10	1	#5	4	5'-11"	6
S11	1	#5	3	13'-9"	14
S12	1	#5	4	5'-6"	6
S13	1	#5	3	13'-11"	15
S14	1	#5	4	5'-8"	6
S15	1	#5	3	14'-2"	15
S16	1	#5	4	5'-11"	6
S17	6	#6	9	11'-1"	100
S18	6	#6	10	5'-3"	47
U1	21	#4	6	7'-5"	104
U2	45	#4	6	3'-8"	110
V1	90	#5	STR	9'-4"	876
V2	16	#5	STR	11'-10"	197
V3	26	#5	STR	11'-8"	316
V4	14	#5	STR	10'-8"	156
V5	22	#5	STR	10'-6"	241
REINFORCING STEEL					9,182 LBS.
CLASS A CONCRETE BREAKDOWN					
POUR #1 CAP, LOWER PART OF WINGS, & COLLARS					48.2 C.Y.
POUR #2 BACKWALL & UPPER PART OF WINGS					18.9 C.Y.
TOTAL CLASS A CONCRETE					67.1 C.Y.



PROFESSIONAL ENGINEER
NORTH CAROLINA
SEAL
040384
JEFFREY C. WILSON
ENGINEER
10/10/2022
DOCUMENT NOT CONSIDERED FINAL UNLESS ALL SIGNATURES COMPLETED

Firm License No. C-1051
223 S West St,
Suite 1100
Raleigh, NC 27603
T 919.380.8750
www.stewartinc.com

STEWART

PROJECT NO. BR-0070
CASWELL COUNTY
STATION: 30+57.00 -L-

SHEET 3 OF 3
STATE OF NORTH CAROLINA
DEPARTMENT OF TRANSPORTATION
RALEIGH
SUBSTRUCTURE
END BENT 1
SECTION AND DETAILS

REVISIONS					
NO.	BY:	DATE:	NO.	BY:	DATE:
1			3		
2			4		

SHEET NO. S-29
TOTAL SHEETS 39

DRAWN BY: J. WILSON DATE: 10/22
CHECKED BY: D. RUGGLES DATE: 10/22
DESIGN ENGINEER OF RECORD: J. WILSON DATE: 10/22

BR-0070
10/10/2022
\\BR-0070-SMU.E3.160061.dgn
USER: jwilson