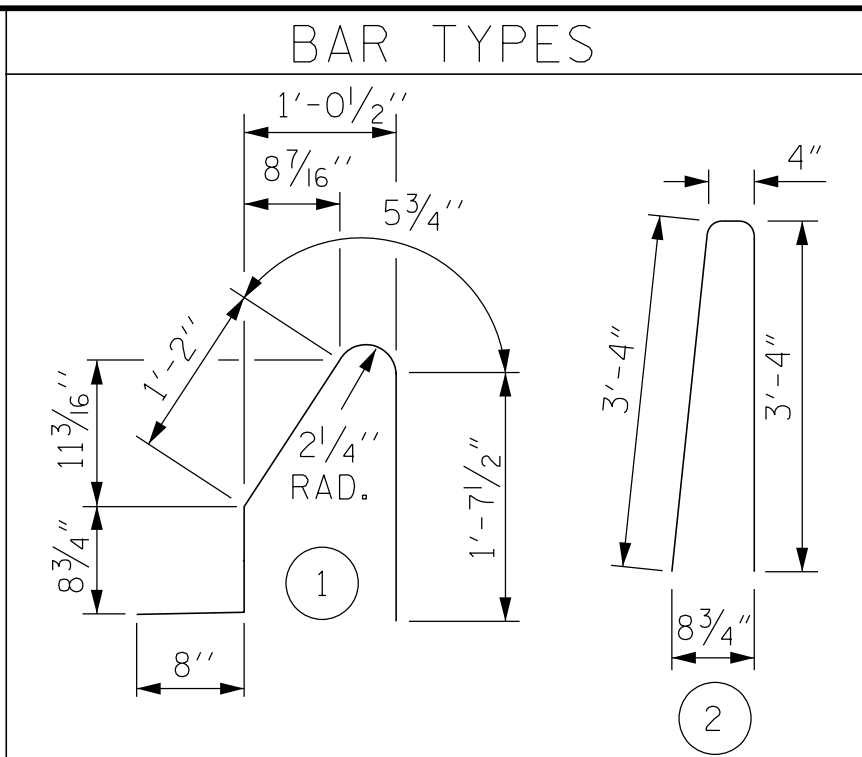


NOTES

THE BARRIER RAIL IN A CONTINUOUS UNIT SHALL NOT BE CAST UNTIL ALL SLAB CONCRETE IN THE UNIT HAS BEEN CAST AND HAS REACHED A MINIMUM COMPRESSIVE STRENGTH OF 3,000 PSI.

ALL REINFORCING STEEL IN BARRIER RAILS SHALL BE EPOXY COATED.

GROOVED CONTRACTION JOINTS, 1/2" IN DEPTH, SHALL BE TOOLED IN ALL EXPOSED FACES OF THE BARRIER RAIL AND IN ACCORDANCE WITH ARTICLE 825-10(B) OF THE STANDARD SPECIFICATIONS, THE CONTRACTION JOINT SHALL BE LOCATED AT EACH THIRD POINT BETWEEN BARRIER RAIL EXPANSION JOINTS. ONLY ONE CONTRACTION JOINT IS REQUIRED AT MIDPOINT OF BARRIER RAIL SEGMENTS LESS THAN 20 FEET IN LENGTH AND NO CONTRACTION JOINTS ARE REQUIRED FOR THOSE SEGMENTS LESS THAN 10 FEET IN LENGTH.

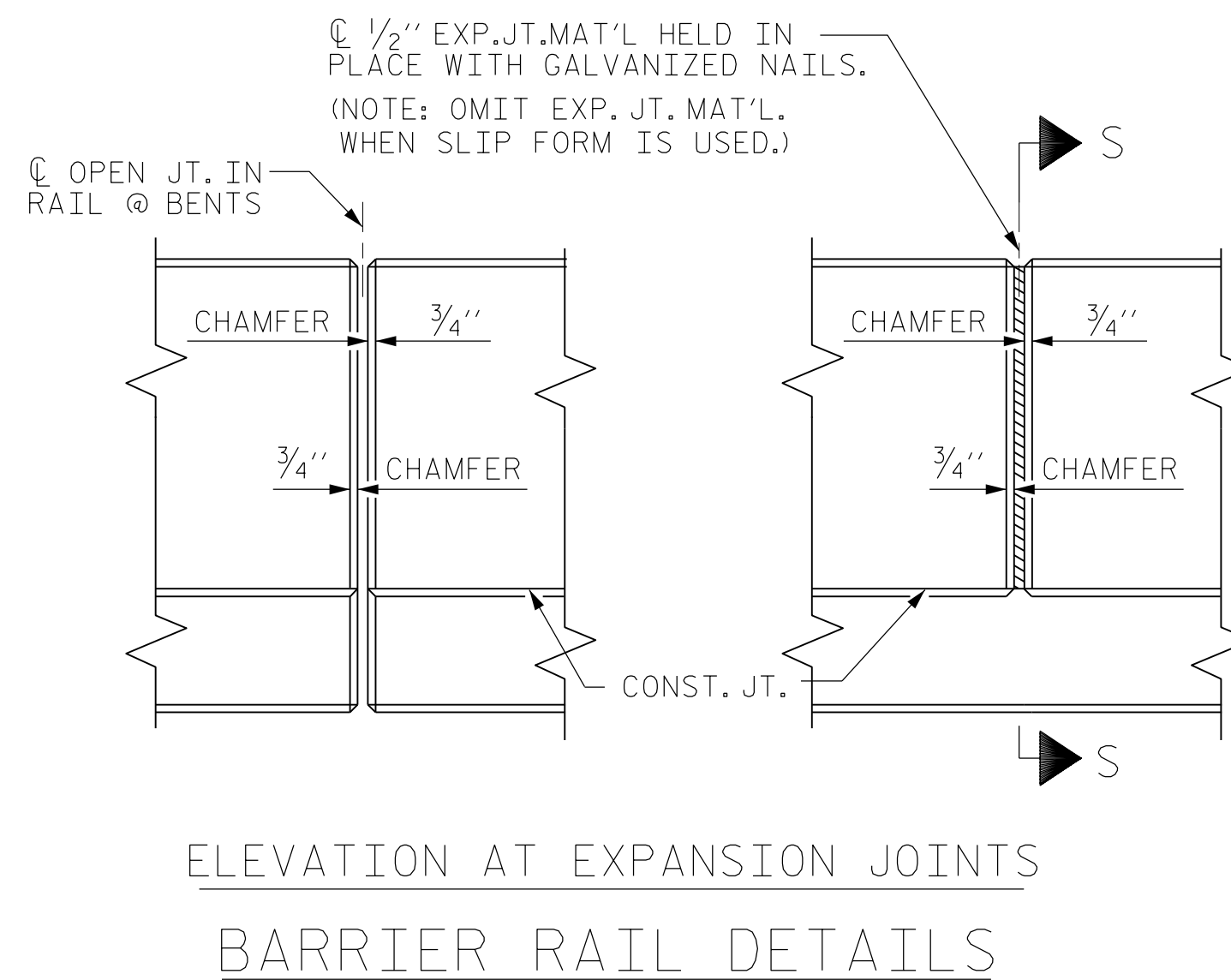
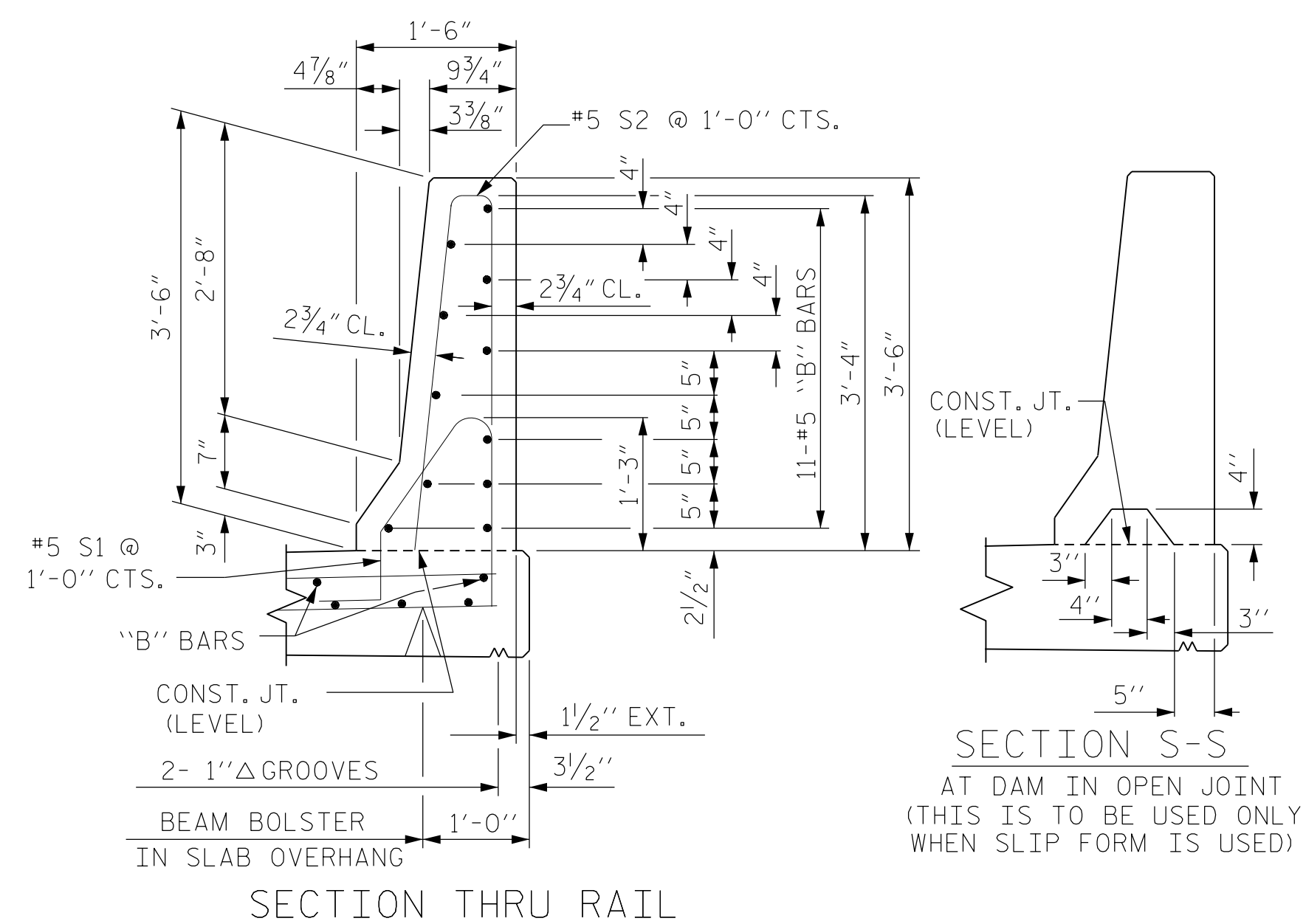


ALL BAR DIMENSIONS ARE OUT TO OUT

BILL OF MATERIAL  
FOR CONCRETE BARRIER RAIL ONLY

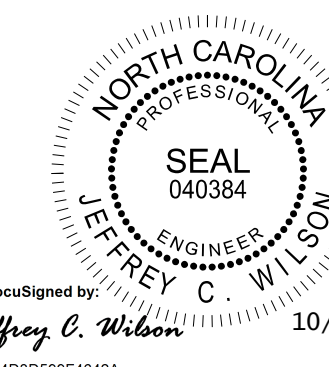
BAR	NO.	SIZE	TYPE	LENGTH	WEIGHT
* B1	176	#5	STR	29'-7"	5,431
* B2	44	#5	STR	10'-8"	490
* B3	44	#5	STR	15'-2"	696
* S1	570	#5	1	4'-8"	2,774
* S2	570	#5	2	7'-0"	4,162
* EPOXY COATED REINFORCING STEEL					13,553 LBS.
CLASS AA CONCRETE					77.6 CU. YDS.
CONCRETE BARRIER RAIL					570.61 LIN. FT.

QUANTITIES DO NOT INCLUDE BARRIER RAIL ON APPROACH SLAB



PROJECT NO. BR-0070  
CASWELL COUNTY  
STATION: 30+57.00 -L-

SHEET 3 OF 3



DOCUMENT NOT CONSIDERED FINAL UNLESS ALL SIGNATURES COMPLETED

Firm License No. C-1051  
223 S West St,  
Suite 1100  
Raleigh, NC 27603  
T 919.380.8750  
www.stewartinc.com

STATE OF NORTH CAROLINA  
DEPARTMENT OF TRANSPORTATION  
RALEIGH  
STANDARD  
CONCRETE  
BARRIER RAIL

REVISIONS						SHEET NO.
NO.	BY:	DATE:	NO.	BY:	DATE:	S-22
1			3			TOTAL SHEETS
2			4			39

STD. NO. CBR1 (SHT 3)

ASSEMBLED BY : JCW	DATE : 10/22	
CHECKED BY : DRR	DATE : 10/22	
DRAWN BY : ARB 5/87	REV. 7/12	MAA/GM
CHECKED BY : SJD 9/87	REV. 6/13	MAA/GM
	REV. 12/17	MAA/THC

10/10/2022  
BR-0070-SMU-BR3-160061.dgn  
USER: jwilson

BR-0070