

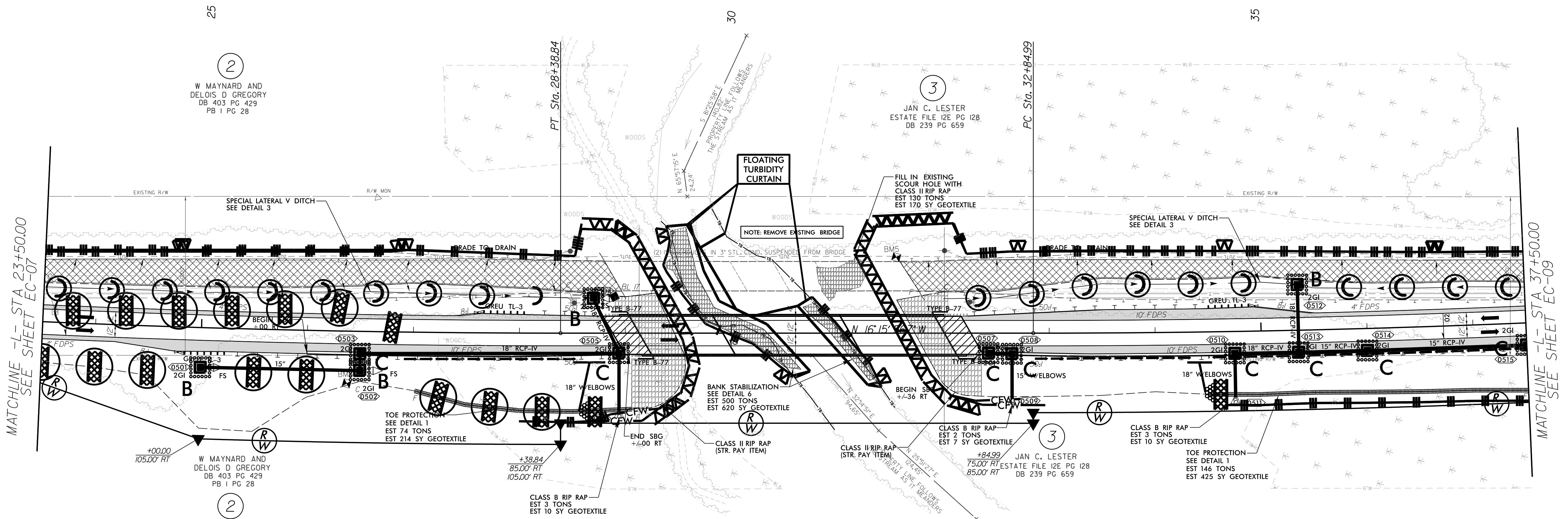
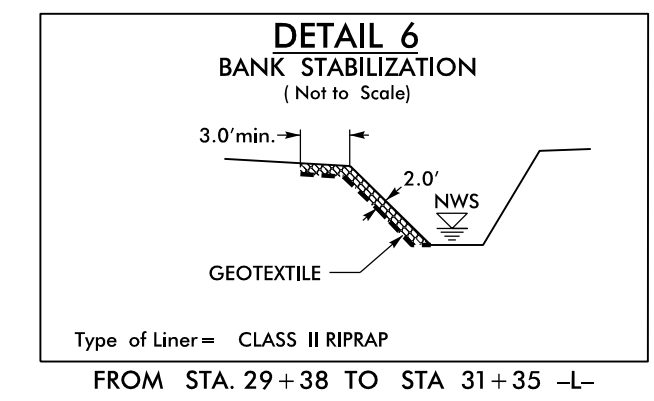
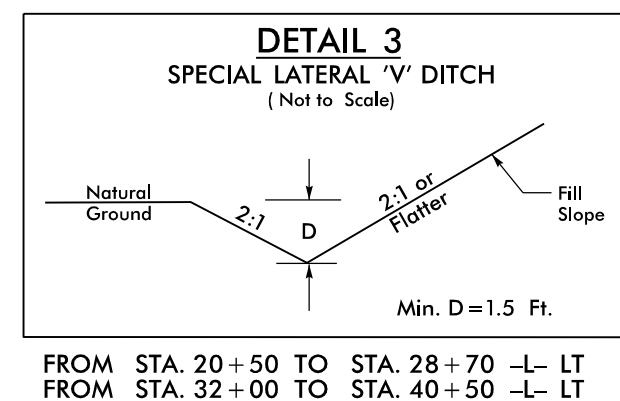
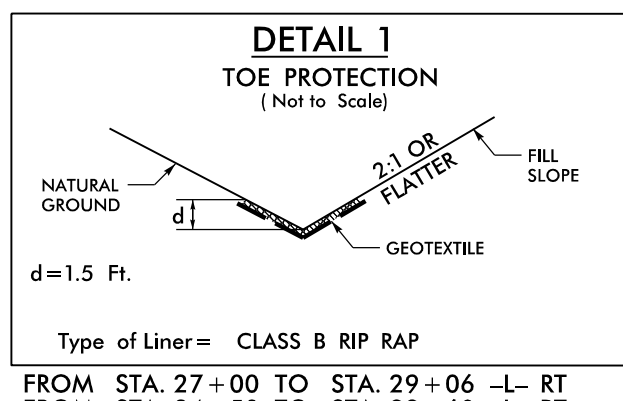
8/17/99

PROJECT REFERENCE NO. <i>BR-0070</i>	SHEET NO. <i>EC-08/CONST.05</i>
ROADWAY DESIGN ENGINEER	HYDRAULICS ENGINEER
STEWART	VHB Engineering NC, P.C. (C-3705) 940 Main Campus Drive, Suite 500 Raleigh, NC 27606

NAD 83NA 2011

-L-

<i>PI Sta 24+22.25</i>	<i>PI Sta 37+01.89</i>
$\Delta = 4' 18'' 09.6'' (LT)$	$\Delta = 4' 18'' 06.7'' (LT)$
$D = 0' 30'' 58.2''$	$D = 0' 30'' 58.2''$
$L = 833.56'$	$L = 833.41'$
$T = 416.98'$	$T = 416.90'$
$R = 11,000.00'$	$R = 11,000.00'$
$S_e = NC$	$S_e = NC$



NOTE:
UTILIZE FABRIC INSERT INLET PROTECTION DEVICES AS DIRECTED
IN LIEU OF ROCK INLET SEDIMENT TRAP C TO AVOID
IMPOUNDING OF RUNOFF ON ROADWAYS OPEN TO TRAFFIC.

Place Matting for Erosion Control
on Slopes Adjacent to Permitted
Wetlands as Work Allows.

9/28/2007 10:16:00 EC_const_psh05.dgn