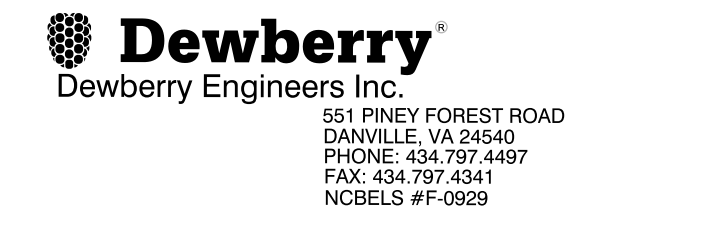
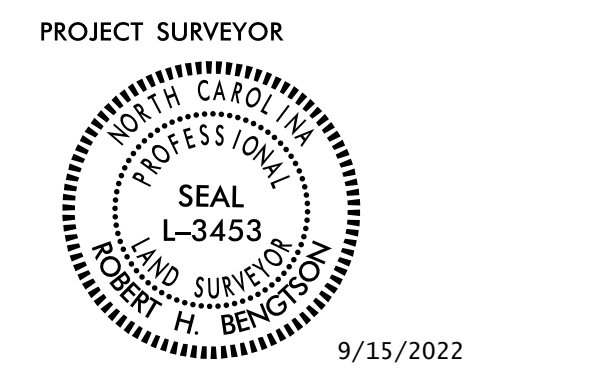


Location and Surveys



I, Robert H. Bengtson, certify that the right of way and permanent easement monumentation for this project shown herein was completed under my direct and responsible charge from an actual survey made under my supervision; that all horizontal closures had a minimum ratio of precision of 1:10,000 (Class A). Field work was performed from 9/6/22 to 9/12/22, and all coordinates are based on NAD83/2011; That this survey was performed to meet the requirements of 21NCAC 56.1600 as applicable.

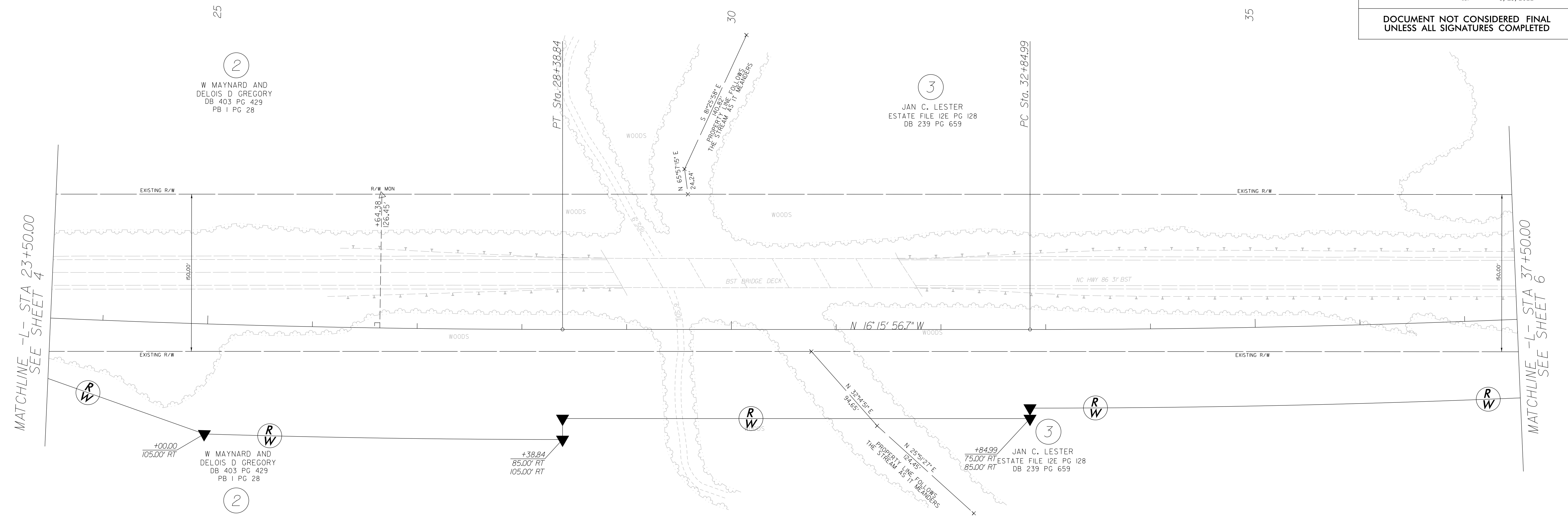
This 15th day of September, 2022.
 Robert H. Bengtson
 Professional Land Surveyor L-3453



DOCUMENT NOT CONSIDERED FINAL UNLESS ALL SIGNATURES COMPLETED

-L-
 PI Sta 24+22.25 PI Sta 37+01.89
 $\Delta = 4' 18'' 09.6'' (LT)$ $\Delta = 4' 18'' 06.7'' (LT)$
 $D = 0' 30' 58.2''$ $D = 0' 30' 58.2''$
 $L = 833.56'$ $L = 833.41'$
 $T = 416.98'$ $T = 416.90'$
 $R = 11,000.00'$ $R = 11,000.00'$
 $S_e = NC$ $S_e = NC$

NAD 83/NA 2011



MATCHLINE -L- STA 23+50.00 SEE SHEET 4

MATCHLINE -L- STA 37+50.00 SEE SHEET 6

REVISIONS

+100.00
105.00' RT
 W MAYNARD AND DELOIS D GREGORY DB 403 PG 429 PB 1 PG 28

+38.84
85.00' RT
105.00' RT
 W MAYNARD AND DELOIS D GREGORY DB 403 PG 429 PB 1 PG 28

+84.99
75.00' RT
85.00' RT
 JAN C. LESTER ESTATE FILE 12E PG 128 DB 239 PG 659

NOTES:

1. IF FURTHER INFORMATION REGARDING PROJECT CONTROL IS NEEDED PLEASE CONTACT THE LOCATION AND SURVEYS UNIT.
2. PROJECT CONTROL WAS ESTABLISHED USING GNSS, THE GLOBAL NAVIGATION SATELLITE SYSTEM.
3. RIGHT OF WAY MONUMENTATION ESTABLISHED 9/6/22 TO 9/12/22 .