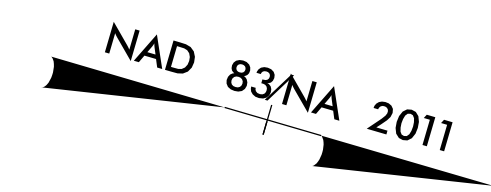
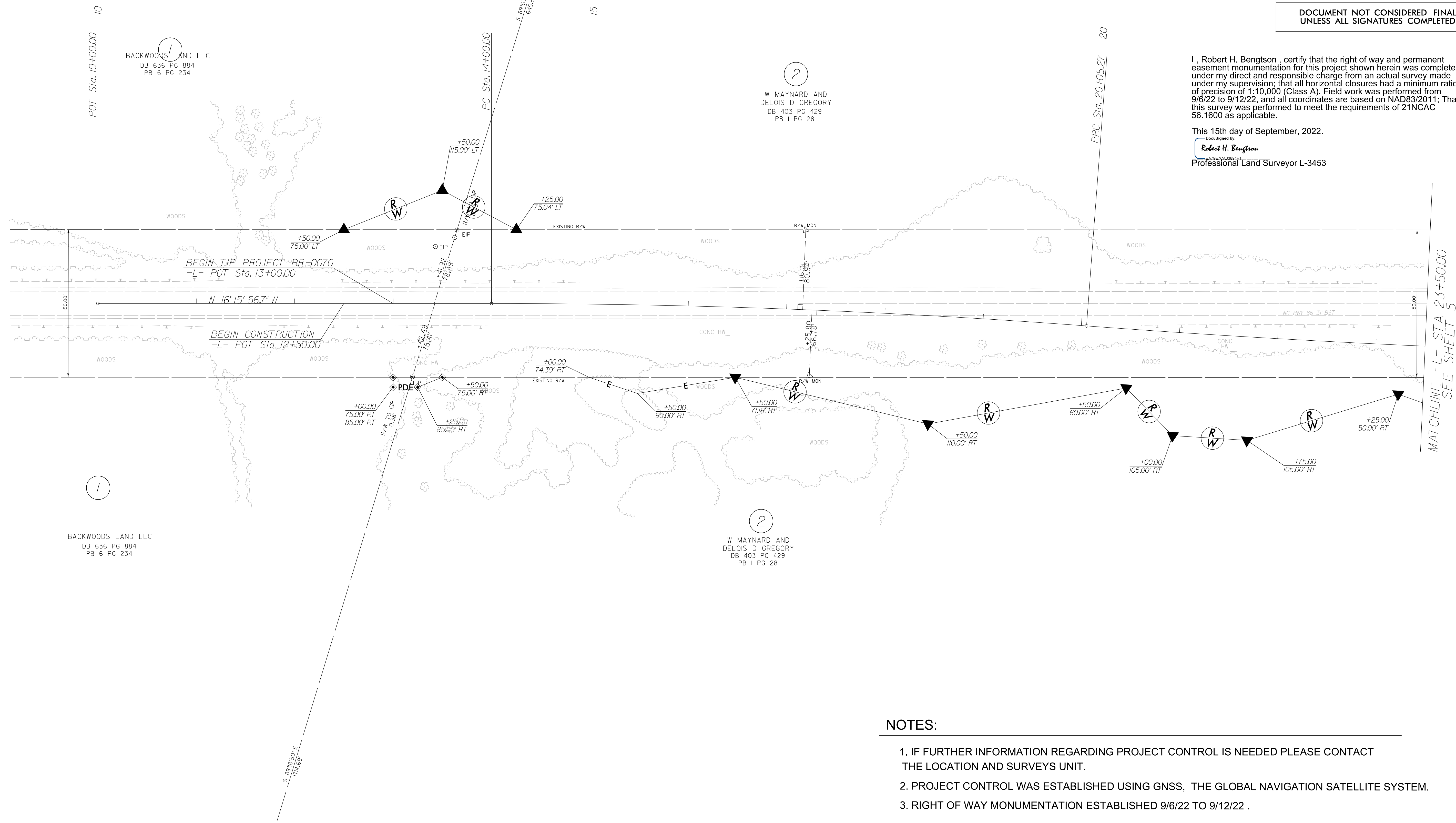


REVISIONS

-L-	
PI Sta 17+02.78	PI Sta 24+22.25
$\Delta = 4' 18' 09.6''$ (RT)	$\Delta = 4' 18' 09.6''$ (LT)
$D = 0' 42' 39.1''$	$D = 0' 30' 58.2''$
$L = 605.27'$	$L = 833.56'$
$T = 302.78'$	$T = 416.98'$
$R = 8,060.00'$	$R = 11,000.00'$
$S_e = RC$	$S_e = NC$
Runoff = 54'	



PROJECT REFERENCE NO.	SHEET NO.
BR0070	RW04
<b>Location and Surveys</b>	
 Dewberry Engineers Inc. 551 PINEY FOREST ROAD DANVILLE, VA 24540 PHONE: 434.797.4497 FAX: 434.797.4341 NCBELS #F-0929	
PROJECT SURVEYOR	
 ROBERT H. BENGTSON 9/15/2022	
DOCUMENT NOT CONSIDERED FINAL UNLESS ALL SIGNATURES COMPLETED	



BACKWOODS LAND LLC  
DB 636 PG 884  
PB 6 PG 234

2  
W MAYNARD AND  
DELOIS D GREGORY  
DB 403 PG 429  
PB 1 PG 28

1  
BACKWOODS LAND LLC  
DB 636 PG 884  
PB 6 PG 234

2  
W MAYNARD AND  
DELOIS D GREGORY  
DB 403 PG 429  
PB 1 PG 28

I, Robert H. Bengtson, certify that the right of way and permanent easement monumentation for this project shown herein was completed under my direct and responsible charge from an actual survey made under my supervision; that all horizontal closures had a minimum ratio of precision of 1:10,000 (Class A). Field work was performed from 9/6/22 to 9/12/22, and all coordinates are based on NAD83/2011; That this survey was performed to meet the requirements of 21NCAC 56.1600 as applicable.

This 15th day of September, 2022.  
DocuSigned by:  
Robert H. Bengtson  
Professional Land Surveyor L-3453

**NOTES:**

1. IF FURTHER INFORMATION REGARDING PROJECT CONTROL IS NEEDED PLEASE CONTACT THE LOCATION AND SURVEYS UNIT.
2. PROJECT CONTROL WAS ESTABLISHED USING GNSS, THE GLOBAL NAVIGATION SATELLITE SYSTEM.
3. RIGHT OF WAY MONUMENTATION ESTABLISHED 9/6/22 TO 9/12/22 .

MATCHLINE -L- STA 23+50.00  
SEE SHEET 5