

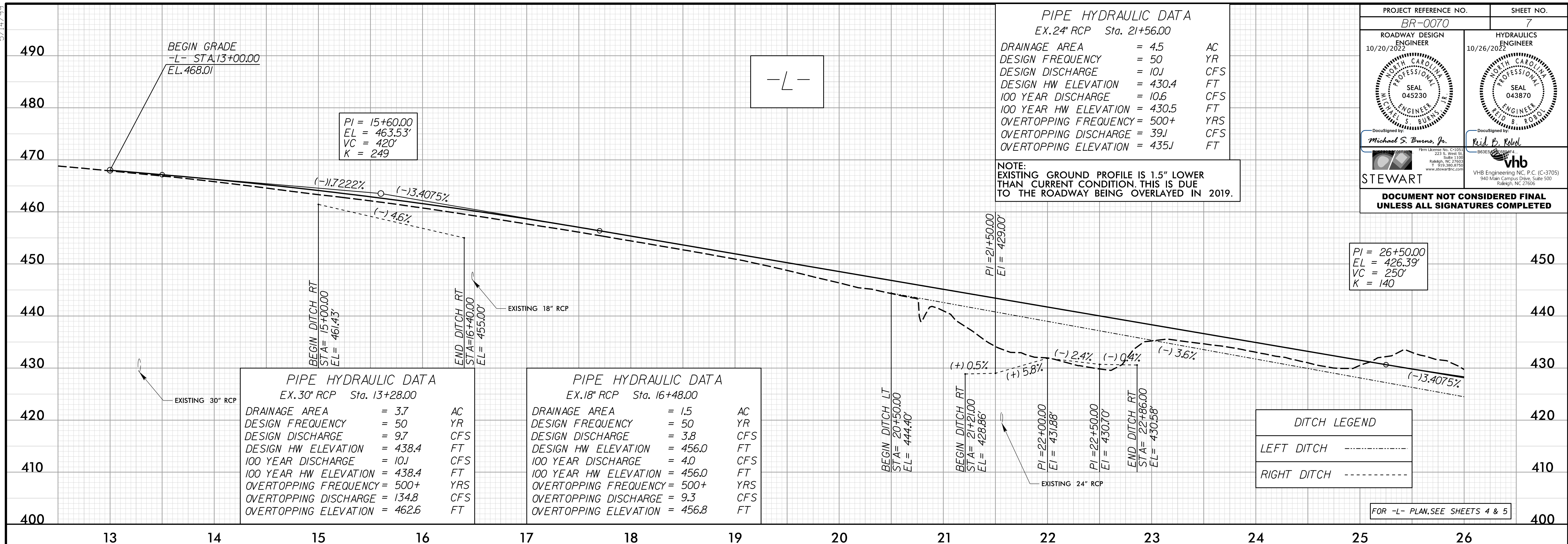
5/14/19

PIPE HYDRAULIC DATA
Ex. 24" RCP Sta. 21+56.00

DRAINAGE AREA	= 4.5	AC
DESIGN FREQUENCY	= 50	YR
DESIGN DISCHARGE	= 10.1	CFS
DESIGN HW ELEVATION	= 430.4	FT
100 YEAR DISCHARGE	= 10.6	CFS
100 YEAR HW ELEVATION	= 430.5	FT
OVERTOPPING FREQUENCY	= 500+	YRS
OVERTOPPING DISCHARGE	= 39.1	CFS
OVERTOPPING ELEVATION	= 435.1	FT

PROJECT REFERENCE NO.	BR-0070	SHEET NO.	7
ROADWAY DESIGN ENGINEER	10/20/2022	HYDRAULICS ENGINEER	10/26/2022
Michael S. Burns, Jr.		Reid B. Robel	
STEWART		vhb	
DOCUMENT NOT CONSIDERED FINAL UNLESS ALL SIGNATURES COMPLETED			

NOTE:
EXISTING GROUND PROFILE IS 1.5' LOWER THAN CURRENT CONDITION. THIS IS DUE TO THE ROADWAY BEING OVERLAYED IN 2019.



PIPE HYDRAULIC DATA
Ex. 30" RCP Sta. 13+28.00

DRAINAGE AREA	= 3.7	AC
DESIGN FREQUENCY	= 50	YR
DESIGN DISCHARGE	= 9.7	CFS
DESIGN HW ELEVATION	= 438.4	FT
100 YEAR DISCHARGE	= 10.1	CFS
100 YEAR HW ELEVATION	= 438.4	FT
OVERTOPPING FREQUENCY	= 500+	YRS
OVERTOPPING DISCHARGE	= 134.8	CFS
OVERTOPPING ELEVATION	= 462.6	FT

PIPE HYDRAULIC DATA
Ex. 18" RCP Sta. 16+48.00

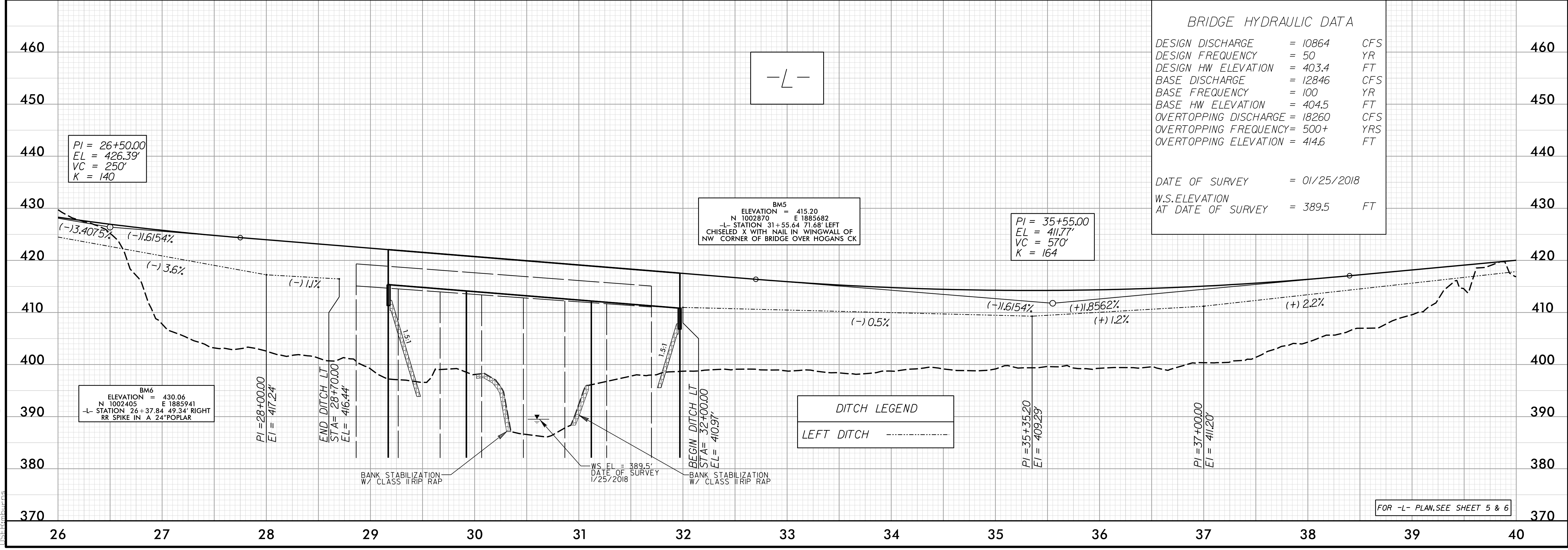
DRAINAGE AREA	= 1.5	AC
DESIGN FREQUENCY	= 50	YR
DESIGN DISCHARGE	= 3.8	CFS
DESIGN HW ELEVATION	= 456.0	FT
100 YEAR DISCHARGE	= 4.0	CFS
100 YEAR HW ELEVATION	= 456.0	FT
OVERTOPPING FREQUENCY	= 500+	YRS
OVERTOPPING DISCHARGE	= 9.3	CFS
OVERTOPPING ELEVATION	= 456.8	FT

DITCH LEGEND

LEFT DITCH	-----
RIGHT DITCH	-----

FOR -L- PLAN, SEE SHEETS 4 & 5

9/18/2022 BR0070 - Rdy - p1_07.dgn



BRIDGE HYDRAULIC DATA

DESIGN DISCHARGE	= 10864	CFS
DESIGN FREQUENCY	= 50	YR
DESIGN HW ELEVATION	= 403.4	FT
BASE DISCHARGE	= 12846	CFS
BASE FREQUENCY	= 100	YR
BASE HW ELEVATION	= 404.5	FT
OVERTOPPING DISCHARGE	= 18260	CFS
OVERTOPPING FREQUENCY	= 500+	YRS
OVERTOPPING ELEVATION	= 414.6	FT

DATE OF SURVEY = 01/25/2018
W.S. ELEVATION AT DATE OF SURVEY = 389.5 FT

DITCH LEGEND

LEFT DITCH	-----
------------	-------

FOR -L- PLAN, SEE SHEET 5 & 6