

**This electronic collection of documents is provided  
for the convenience of the user  
and is Not a Certified Document –**

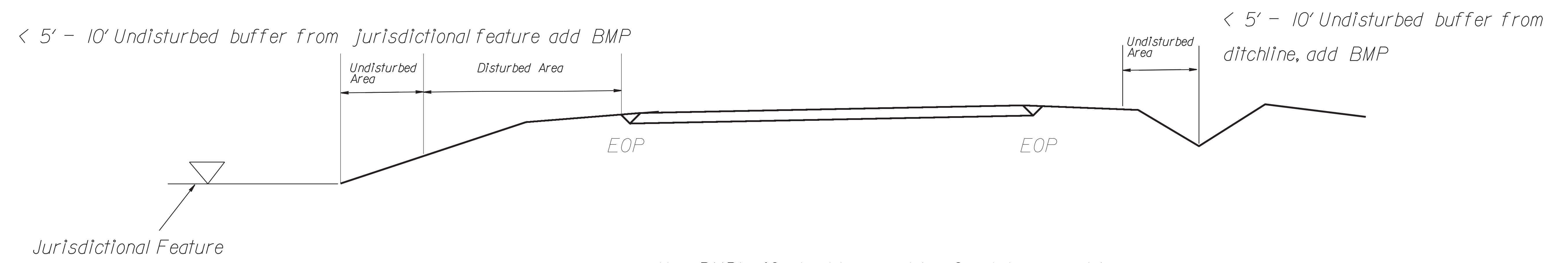
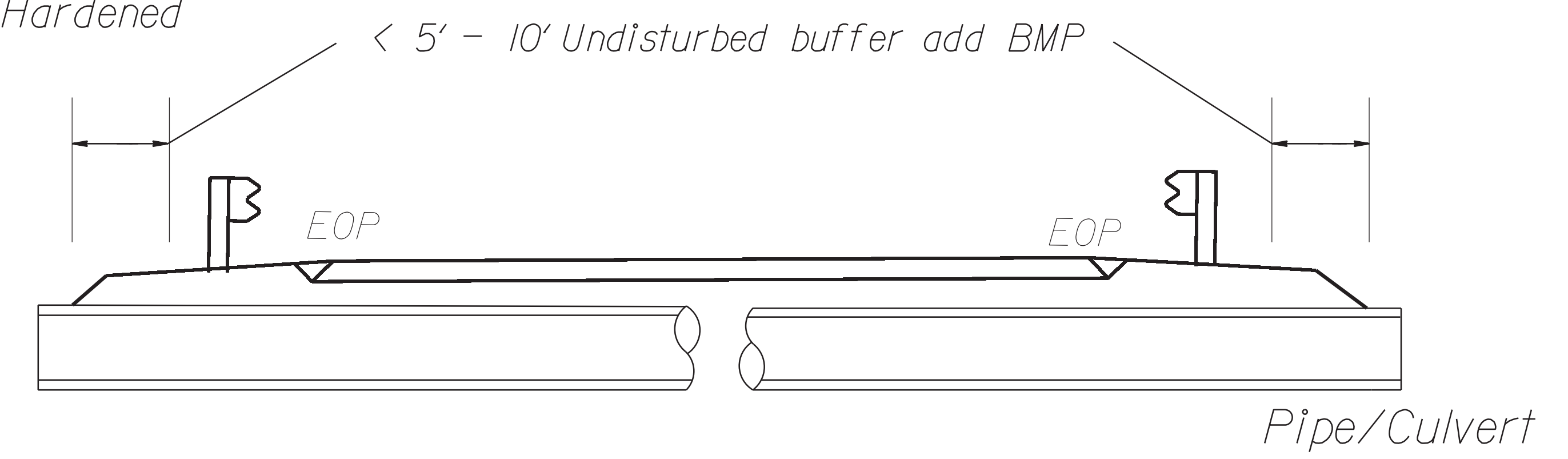
**The documents contained herein were originally issued  
and sealed by the individuals whose names and license  
numbers appear on each page, on the dates appearing  
with their signature on that page.**

**This file or an individual page  
shall not be considered a certified document.**

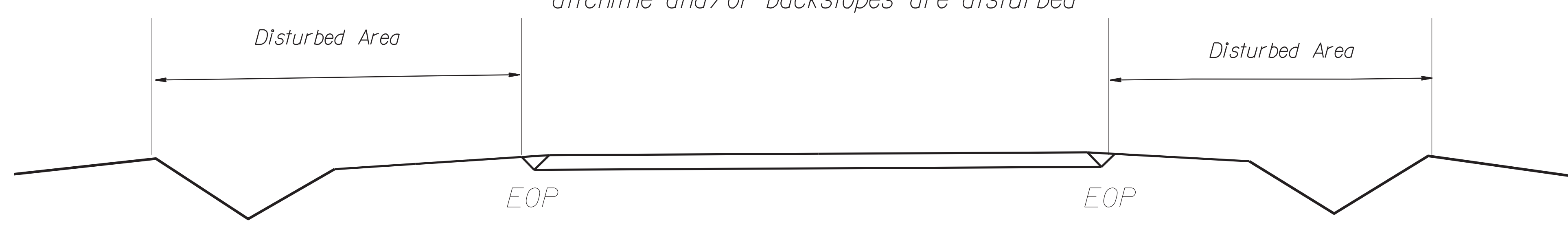
NOTES: Less than 5' - 10' undisturbed buffer from ROW, ditchline, water feature, or drainage inlet, add BMP.

# EROSION CONTROL DETAIL

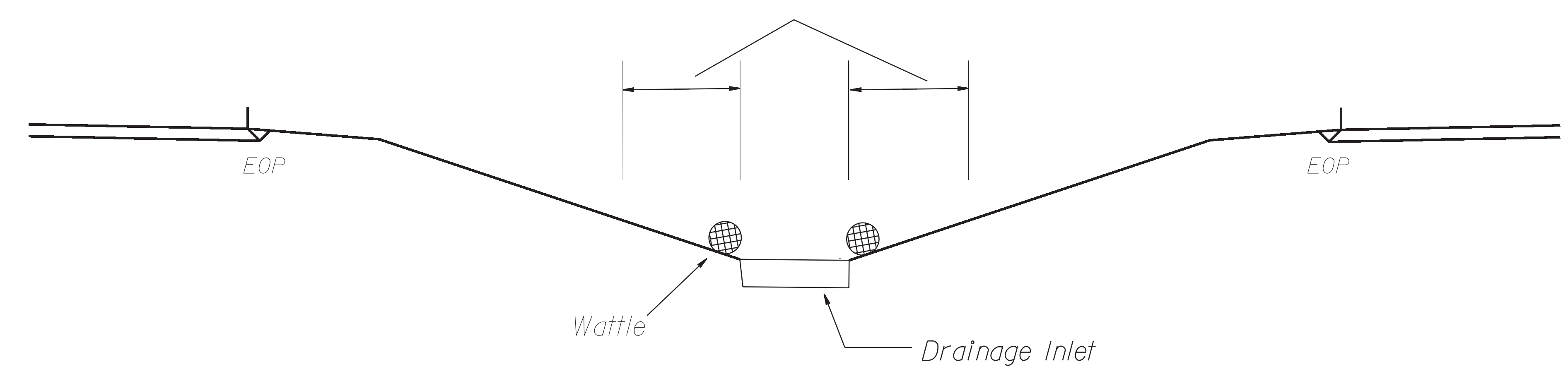
BMP Options: Wattle, Silt Fence or Hardened Aggregate.



Use BMP's if shoulders and/or frontslopes and/or ditchline and/or backslopes are disturbed

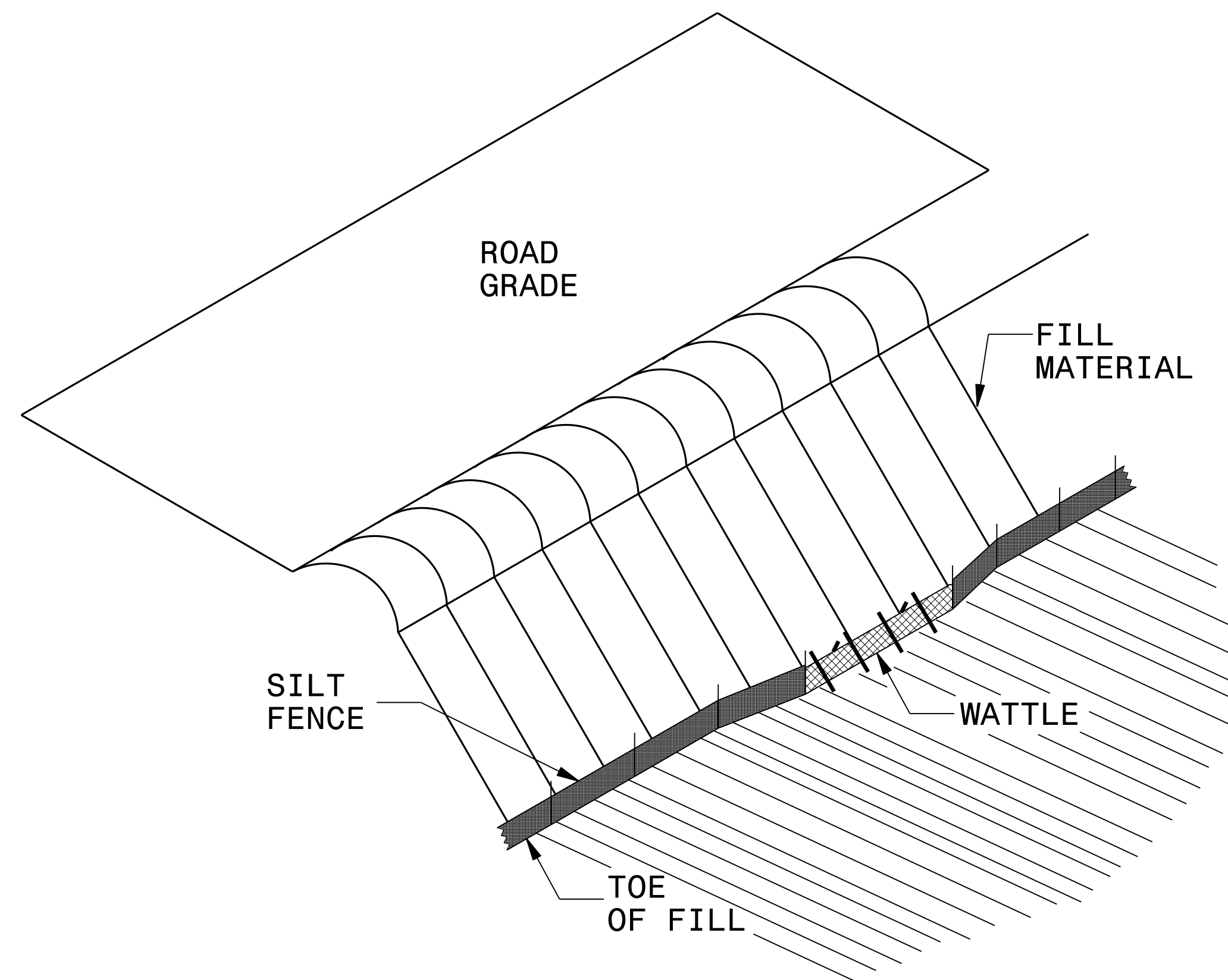


< 5' - 10' Undisturbed buffer from inlet, add wattle

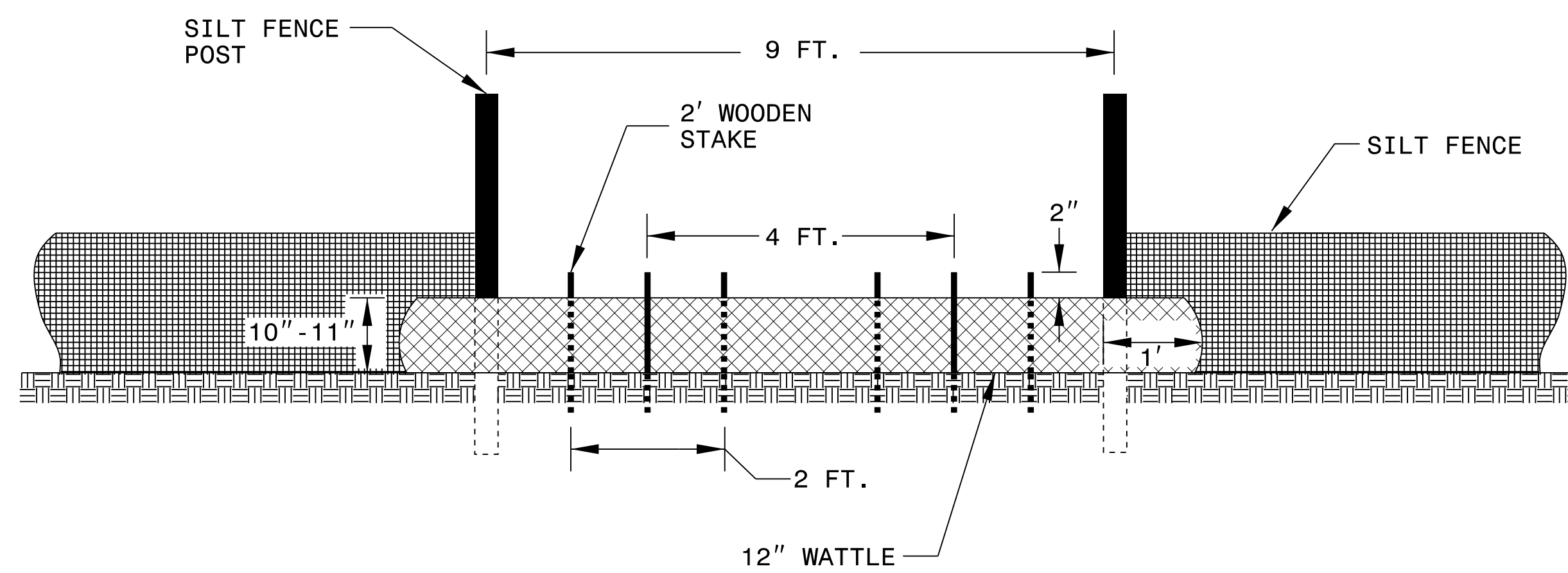


NOT TO SCALE

# SILT FENCE COIR FIBER WATTLE BREAK DETAIL



**ISOMETRIC VIEW**

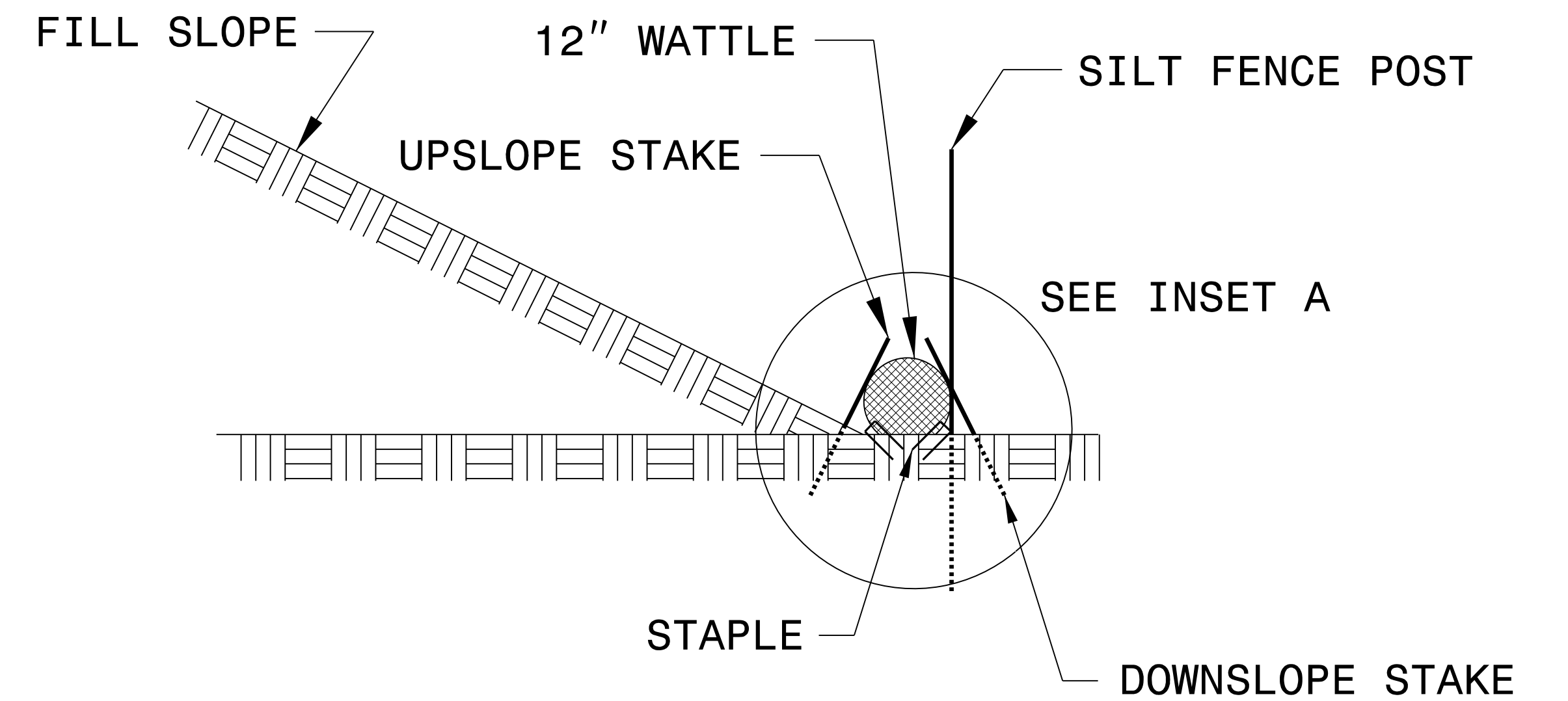
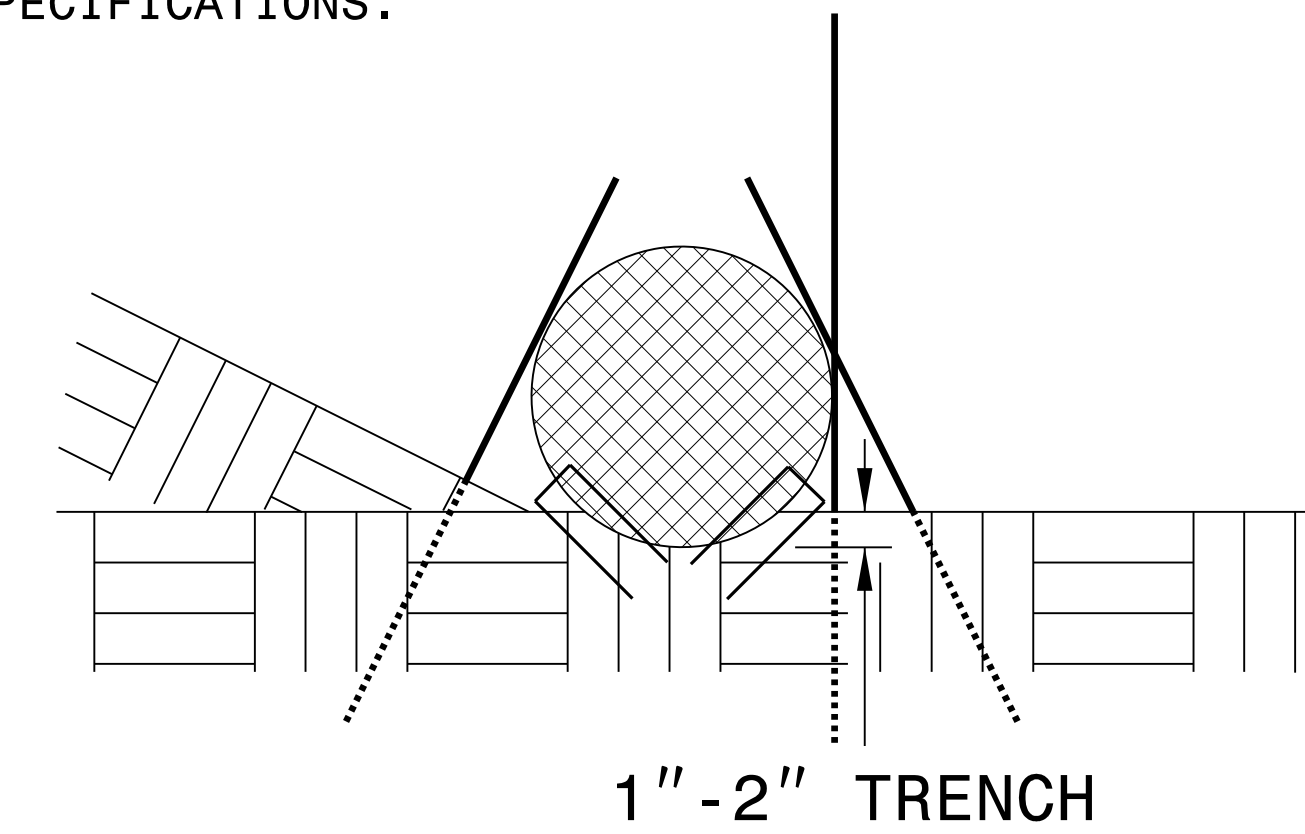


**VIEW FROM SLOPE**

**NOTES:**

- USE MINIMUM 12 IN. DIAMETER COIR FIBER (COCONUT FIBER) WATTLE AND LENGTH OF 10 FT.
- EXCAVATE A 1 TO 2 INCH TRENCH FOR WATTLE TO BE PLACED.
- DO NOT PLACE WATTLE ON TOE OF SLOPE.
- USE 2 FT. WOODEN STAKES WITH A 2 IN. BY 2 IN. NOMINAL CROSS SECTION.
- INSTALL A MINIMUM OF 2 UPSLOPE STAKES AND 4 DOWNSLOPE STAKES AT AN ANGLE TO WEDGE WATTLE TO GROUND.
- PROVIDE STAPLES MADE OF 0.125 IN. DIAMETER STEEL WIRE FORMED INTO A U SHAPE NOT LESS THAN 12" IN LENGTH.
- INSTALL STAPLES APPROXIMATELY EVERY 1 LINEAR FOOT ON BOTH SIDES OF WATTLE AND AT EACH END TO SECURE IT TO THE SOIL.
- WATTLE INSTALLATION CAN BE ON OUTSIDE OF THE SILT FENCE AS DIRECTED.
- INSTALL TEMPORARY SILT FENCE IN ACCORDANCE WITH SECTION 1605 OF THE STANDARD SPECIFICATIONS.

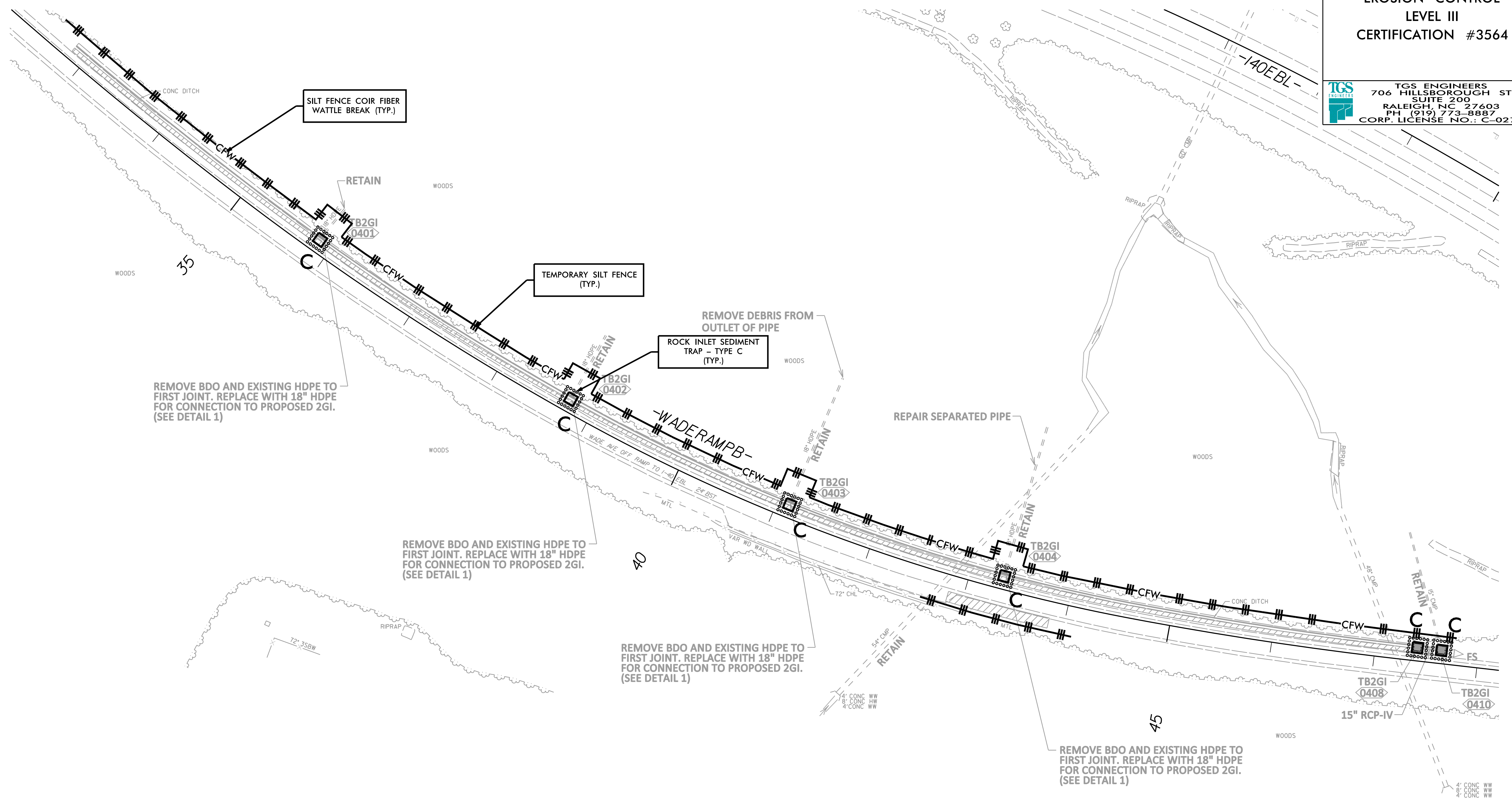
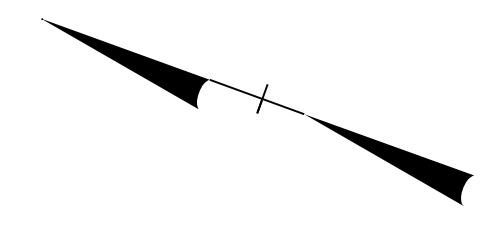
**INSET A**



**SIDE VIEW**

**BEN HENEGAR, PE**  
**EROSION CONTROL**  
**LEVEL III**  
**CERTIFICATION #3564**

**TGS ENGINEERS**  
706 HILLSBOROUGH ST  
SUITE 200  
RALEIGH, NC 27603  
PH (919) 773-8887  
CORP. LICENSE NO.: C-0275



REMOVE BDO AND EXISTING HDPE TO FIRST JOINT. REPLACE WITH 18" HDPE FOR CONNECTION TO PROPOSED 2GI. (SEE DETAIL 1)

REMOVE BDO AND EXISTING HDPE TO FIRST JOINT. REPLACE WITH 18" HDPE FOR CONNECTION TO PROPOSED 2GI. (SEE DETAIL 1)

REMOVE BDO AND EXISTING HDPE TO FIRST JOINT. REPLACE WITH 18" HDPE FOR CONNECTION TO PROPOSED 2GI. (SEE DETAIL 1)

REMOVE BDO AND EXISTING HDPE TO FIRST JOINT. REPLACE WITH 18" HDPE FOR CONNECTION TO PROPOSED 2GI. (SEE DETAIL 1)

REVISIONS

8.17.99

07-JAN-2022 13:45  
R:\henegar\1-5943\_EC\_psh\_EC-3.dgn  
henegar

**NOTES:**

- NO LOCATION SURVEY HAS BEEN PERFORMED ON THIS PROJECT. ALIGNMENTS SHOWN ARE INTENDED TO PROVIDE APPROXIMATE LENGTHS AND LOCATIONS ONLY.
- PLAN STATIONS ARE APPROXIMATE AND MAY REQUIRE FIELD ADJUSTMENT AS DETERMINED BY THE ENGINEER.