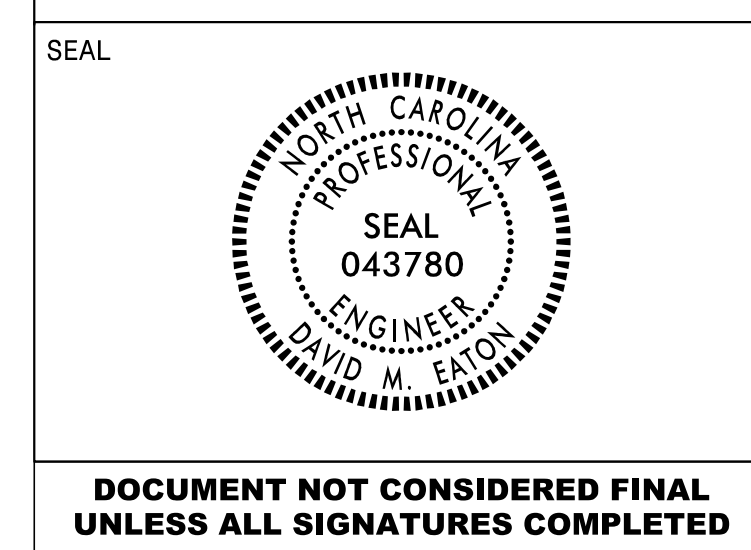


APPROVED: *David M. Eaton*  
 DATE: 04/29/2022



SIGN NUMR: 209,210      BACKG. COLOR: Green      DESIGN BY: DME      CHECKED BY: AIA      DATE: Aug 25, 2021  
 TYPE: A Ground      COPY COLOR: White      PROJECT ID: I-5999      LOCATION: I-540      DIV: 05

SYMBOL TABLE:  
 AR\_Type A      X: 49.01      Y: 6      WID: 18.25      HT: 29.25

SIGN WIDTH: 78"      HEIGHT: 60"      TOTAL AREA: 32.5 Sq.Feet

MAT'L: 0.125" ALUMINUM

BORDER TYPE: FLUSH  
 RECESS: 0"  
 WIDTH: 1.5"  
 RADII: 6"

NO. Z BARS: 2      LENGTH: 70.0"

USE NOTES: 2,5  
 1. Legend and border shall be direct applied Grade A reflective sheeting.  
 2. Legend and border shall be direct applied Grade C reflective sheeting.  
 3. Shields shall be Grade A reflective sheeting on 0.032" aluminum and demountable.  
 4. Background shall be Grade B reflective sheeting.  
 5. Background shall be Grade C reflective sheeting.  
 6. Center arrow(s) vertically on sign.

Letter spacings are to start of next letter						Series/Size	
	E	X	I	T		Text Length	
	16.82	12.78	15.84	6.75	9	16.81	E 2000
							44.38
	1	1					E 2000
	16.01	11.61	5.4	44.98			17.01

Spacing Factor is 1 unless specified otherwise  
 FILENAME: GSENG

SIGN NUMR: 213,215      BACKG. COLOR: Green      DESIGN BY: DME      CHECKED BY: AIA      DATE: Aug 25, 2021  
 TYPE: A Ground      COPY COLOR: White      PROJECT ID: I-5999      LOCATION: I-540      DIV: 05

SYMBOL TABLE:  
 AR\_Type A      X: 49.01      Y: 6      WID: 18.25      HT: 29.25

SIGN WIDTH: 78"      HEIGHT: 60"      TOTAL AREA: 32.5 Sq.Feet

MAT'L: 0.125" ALUMINUM

BORDER TYPE: FLUSH  
 RECESS: 0"  
 WIDTH: 1.5"  
 RADII: 6"

NO. Z BARS: 2      LENGTH: 70.0"

USE NOTES: 2,5  
 1. Legend and border shall be direct applied Grade A reflective sheeting.  
 2. Legend and border shall be direct applied Grade C reflective sheeting.  
 3. Shields shall be Grade A reflective sheeting on 0.032" aluminum and demountable.  
 4. Background shall be Grade B reflective sheeting.  
 5. Background shall be Grade C reflective sheeting.  
 6. Center arrow(s) vertically on sign.

Letter spacings are to start of next letter						Series/Size	
	E	X	I	T		Text Length	
	16.82	12.78	15.84	6.75	9	16.81	E 2000
							44.38
	1	6					E 2000
	12.45	9.54	14.58	41.43			24.12

Spacing Factor is 1 unless specified otherwise  
 FILENAME: GSENG

SIGN NUMR: 211,212      BACKG. COLOR: Green      DESIGN BY: DME      CHECKED BY: AIA      DATE: Aug 25, 2021  
 TYPE: A Ground      COPY COLOR: White      PROJECT ID: I-5999      LOCATION: I-540      DIV: 05

SYMBOL TABLE:  
 AR\_Type A      X: 49.01      Y: 6      WID: 18.25      HT: 29.25

SIGN WIDTH: 78"      HEIGHT: 60"      TOTAL AREA: 32.5 Sq.Feet

MAT'L: 0.125" ALUMINUM

BORDER TYPE: FLUSH  
 RECESS: 0"  
 WIDTH: 1.5"  
 RADII: 6"

NO. Z BARS: 2      LENGTH: 70.0"

USE NOTES: 2,5  
 1. Legend and border shall be direct applied Grade A reflective sheeting.  
 2. Legend and border shall be direct applied Grade C reflective sheeting.  
 3. Shields shall be Grade A reflective sheeting on 0.032" aluminum and demountable.  
 4. Background shall be Grade B reflective sheeting.  
 5. Background shall be Grade C reflective sheeting.  
 6. Center arrow(s) vertically on sign.

Letter spacings are to start of next letter						Series/Size	
	E	X	I	T		Text Length	
	16.82	12.78	15.84	6.75	9	16.81	E 2000
							44.38
	1	4					E 2000
	11.82	8.46	16.92	40.8			25.38

Spacing Factor is 1 unless specified otherwise  
 FILENAME: GSENG

SIGN NUMR: 214,216      BACKG. COLOR: Green      DESIGN BY: DME      CHECKED BY: AIA      DATE: Aug 25, 2021  
 TYPE: A Ground      COPY COLOR: White      PROJECT ID: I-5999      LOCATION: I-540      DIV: 05

SYMBOL TABLE:  
 AR\_Type A      X: 49.01      Y: 6      WID: 18.25      HT: 29.25

SIGN WIDTH: 78"      HEIGHT: 60"      TOTAL AREA: 32.5 Sq.Feet

MAT'L: 0.125" ALUMINUM

BORDER TYPE: FLUSH  
 RECESS: 0"  
 WIDTH: 1.5"  
 RADII: 6"

NO. Z BARS: 2      LENGTH: 70.0"

USE NOTES: 2,5  
 1. Legend and border shall be direct applied Grade A reflective sheeting.  
 2. Legend and border shall be direct applied Grade C reflective sheeting.  
 3. Shields shall be Grade A reflective sheeting on 0.032" aluminum and demountable.  
 4. Background shall be Grade B reflective sheeting.  
 5. Background shall be Grade C reflective sheeting.  
 6. Center arrow(s) vertically on sign.

Letter spacings are to start of next letter						Series/Size	
	E	X	I	T		Text Length	
	16.82	12.78	15.84	6.75	9	16.81	E 2000
							44.38
	1	7					E 2000
	12.99	8.46	14.58	41.97			23.04

Spacing Factor is 1 unless specified otherwise  
 FILENAME: GSENG

04/28/22 S:\5800\Eastern\Div 5\I-5999\I-540\_A-B\_sign design sheets\_v8.dgn User:meaton

TYPE "A" AND "B" SIGNS