

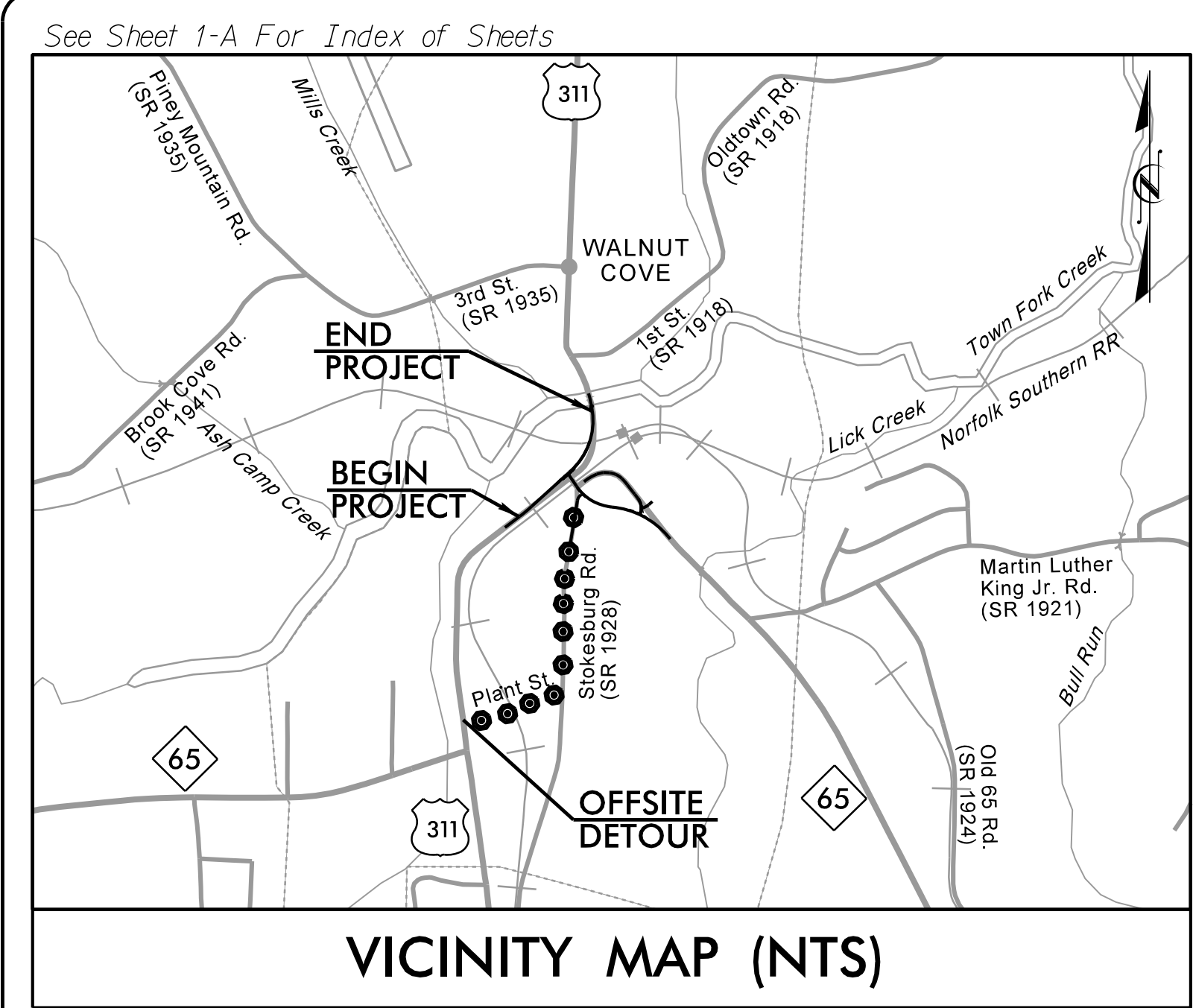
**This electronic collection of documents is provided
for the convenience of the user
and is Not a Certified Document –**

**The documents contained herein were originally issued
and sealed by the individuals whose names and license
numbers appear on each page, on the dates appearing
with their signature on that page.**

**This file or an individual page
shall not be considered a certified document.**

9/13/2022
 \\gd.rkk.com\fs\Cloud\Projects\2015\15077_NCWest\LSA\F01_R5768_Design\Utilities\Engineering\UB0\Proj\R-5768_ut_rdy_tsh_U001.dgn

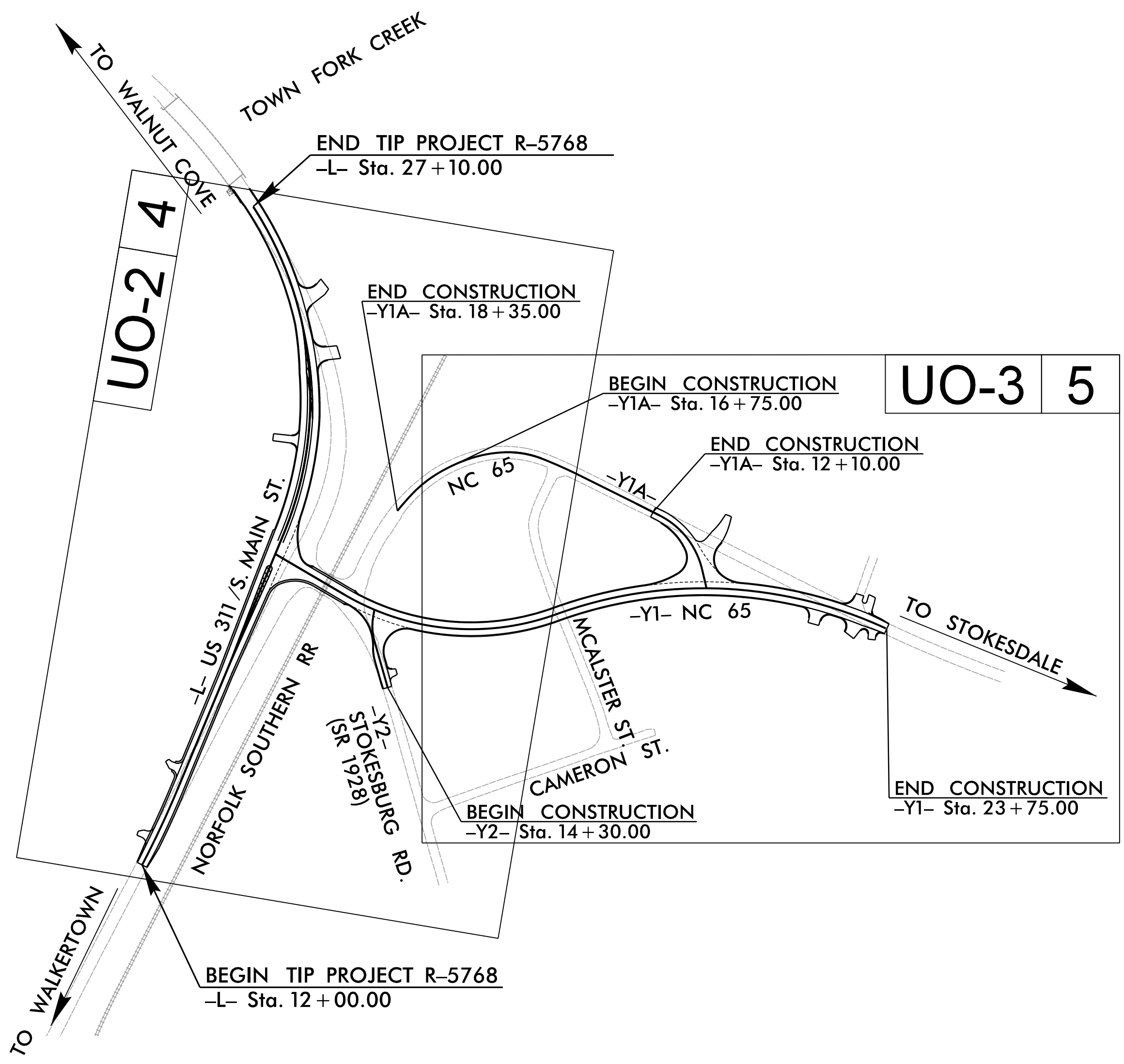
TIP PROJECT: R-5768



STATE OF NORTH CAROLINA
DIVISION OF HIGHWAYS

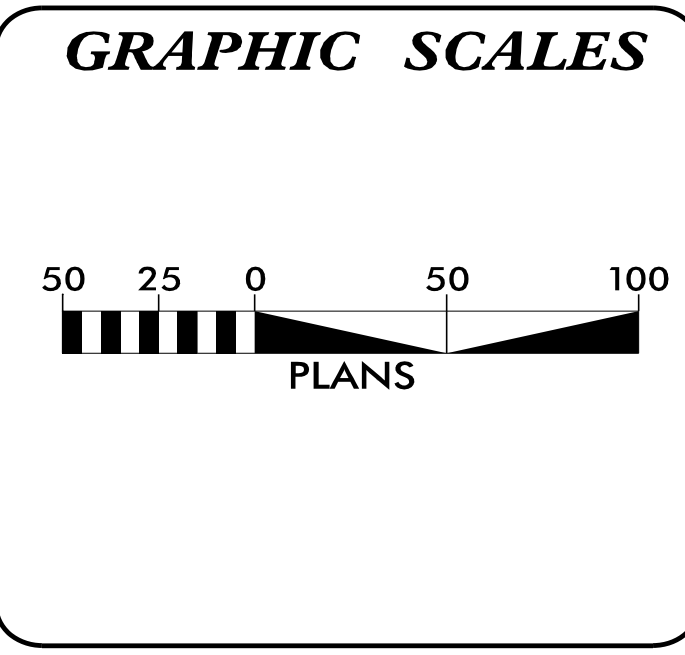
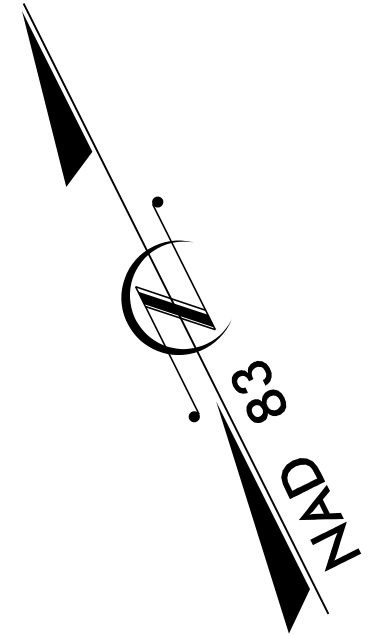
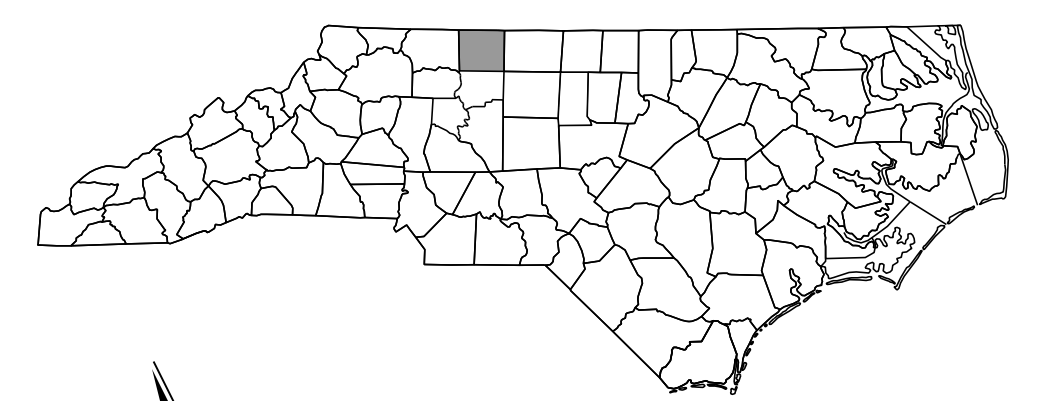
**UTILITIES BY OTHERS PLANS
STOKES COUNTY**

**LOCATION: US 311 / NC 65 IN VICINITY OF SR 1928 (STOKESBURG RD.)
IN WALNUT COVE**
TYPE OF WORK: UTILITY WORK



T.I.P. NO.	SHEET NO.
R-5768	UO-01

NOTE:
ALL UTILITY WORK SHOWN ON THIS SHEET WILL BE DONE BY OTHERS. NO PAYMENT WILL BE MADE TO THE CONTRACTOR FOR UTILITY WORK SHOWN ON THIS SHEET.



INDEX OF SHEETS

SHEET NO.:	DESCRIPTION:
UO-01	TITLE SHEET
UO-02 - UO-03	UBO PLAN SHEETS

UTILITY OWNERS WITH CONFLICTS

(A) DUKE ENERGY - POWER (D)
(B) DUKE ENERGY - POWER (T)
(C) PIEDMONT NATURAL GAS - NATURAL GAS
(D) CENTURYLINK - TELECOM
(E) WILKES COMMUNICATIONS - TELECOM
(F) SPECTRUM - CATV
(G) WALNUT COVE PWD - WATER AND SEWER

PREPARED IN THE OFFICE OF:

P: (919) 878-8660
 8601 Six Forks Road, Forum 1, Suite 700
 Raleigh, North Carolina 27615-3960
 NC License No. F-0112
 Engineers | Construction Managers | Planners | Scientists
 www.rkk.com
 Responsive People | Creative Solutions

HOWARD WOODALL, III, PE	UTILITY PROJECT MANAGER
MARK LAWSON	PROJECT UTILITY COORDINATOR
MARK LAWSON	PROJECT UTILITY CADD DESIGNER

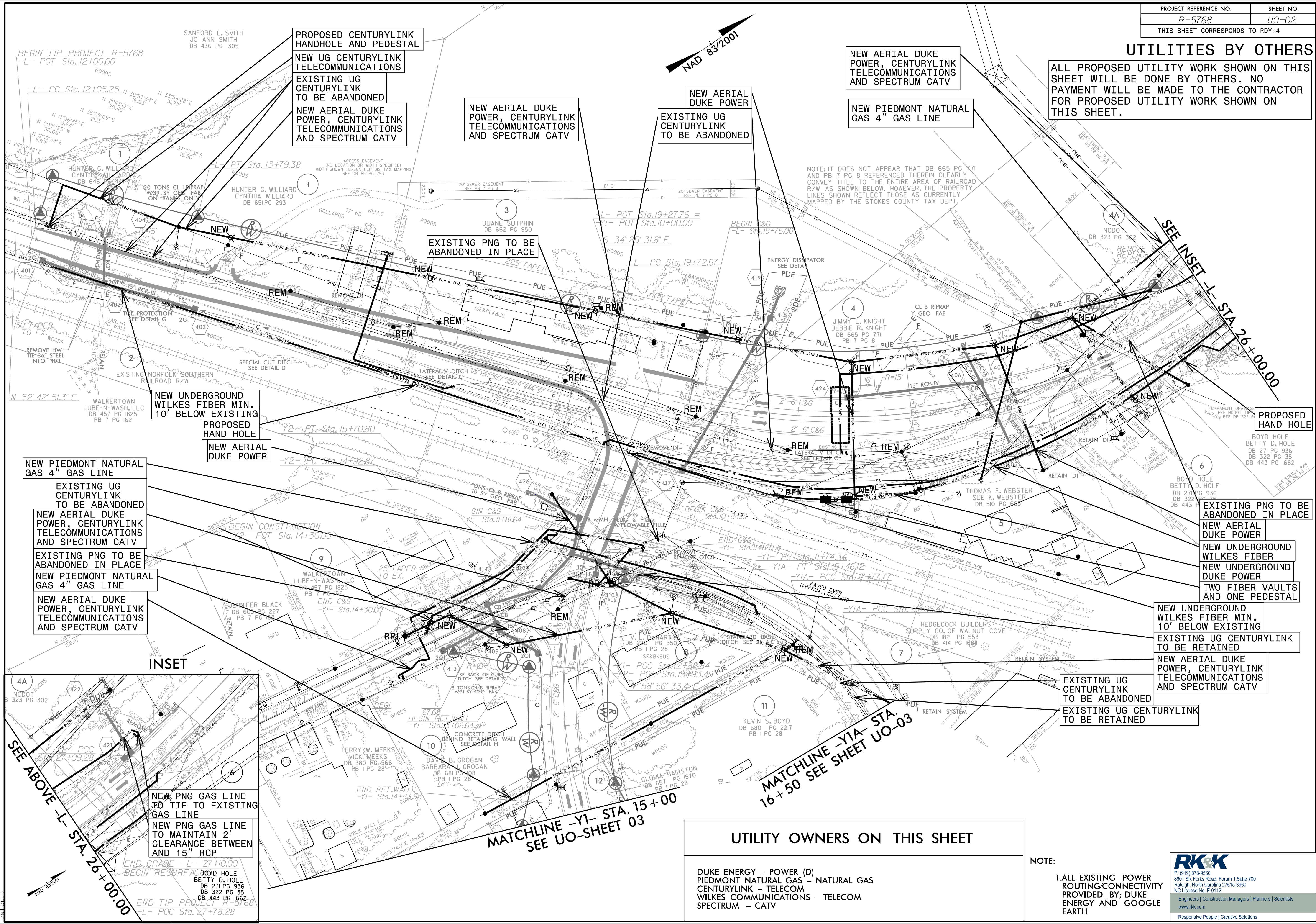
**DIVISION OF HIGHWAYS
DIVISION 9**

375 SILAS CREEK PARKWAY
WINSTON-SALEM, NC 27127

R. DAVID TRANTHAM	DIVISION UTILITY ENGINEER
JOSHUA McMAHAN	DIVISION UTILITY COORDINATOR
AL BLANTON, PE, PLS	DIVISION PROJECT DEVELOPMENT TEAM LEAD

UTILITIES BY OTHERS

ALL PROPOSED UTILITY WORK SHOWN ON THIS SHEET WILL BE DONE BY OTHERS. NO PAYMENT WILL BE MADE TO THE CONTRACTOR FOR PROPOSED UTILITY WORK SHOWN ON THIS SHEET.



NEW PIEDMONT NATURAL GAS 4" GAS LINE
 EXISTING UG CENTURYLINK TO BE ABANDONED
 NEW AERIAL DUKE POWER, CENTURYLINK TELECOMMUNICATIONS AND SPECTRUM CATV
 EXISTING PNG TO BE ABANDONED IN PLACE
 NEW PIEDMONT NATURAL GAS 4" GAS LINE
 NEW AERIAL DUKE POWER, CENTURYLINK TELECOMMUNICATIONS AND SPECTRUM CATV

NEW UNDERGROUND WILKES FIBER MIN. 10' BELOW EXISTING
 PROPOSED HAND HOLE
 NEW AERIAL DUKE POWER

EXISTING PNG TO BE ABANDONED IN PLACE

NEW AERIAL DUKE POWER
 EXISTING UG CENTURYLINK TO BE ABANDONED

NEW AERIAL DUKE POWER, CENTURYLINK TELECOMMUNICATIONS AND SPECTRUM CATV

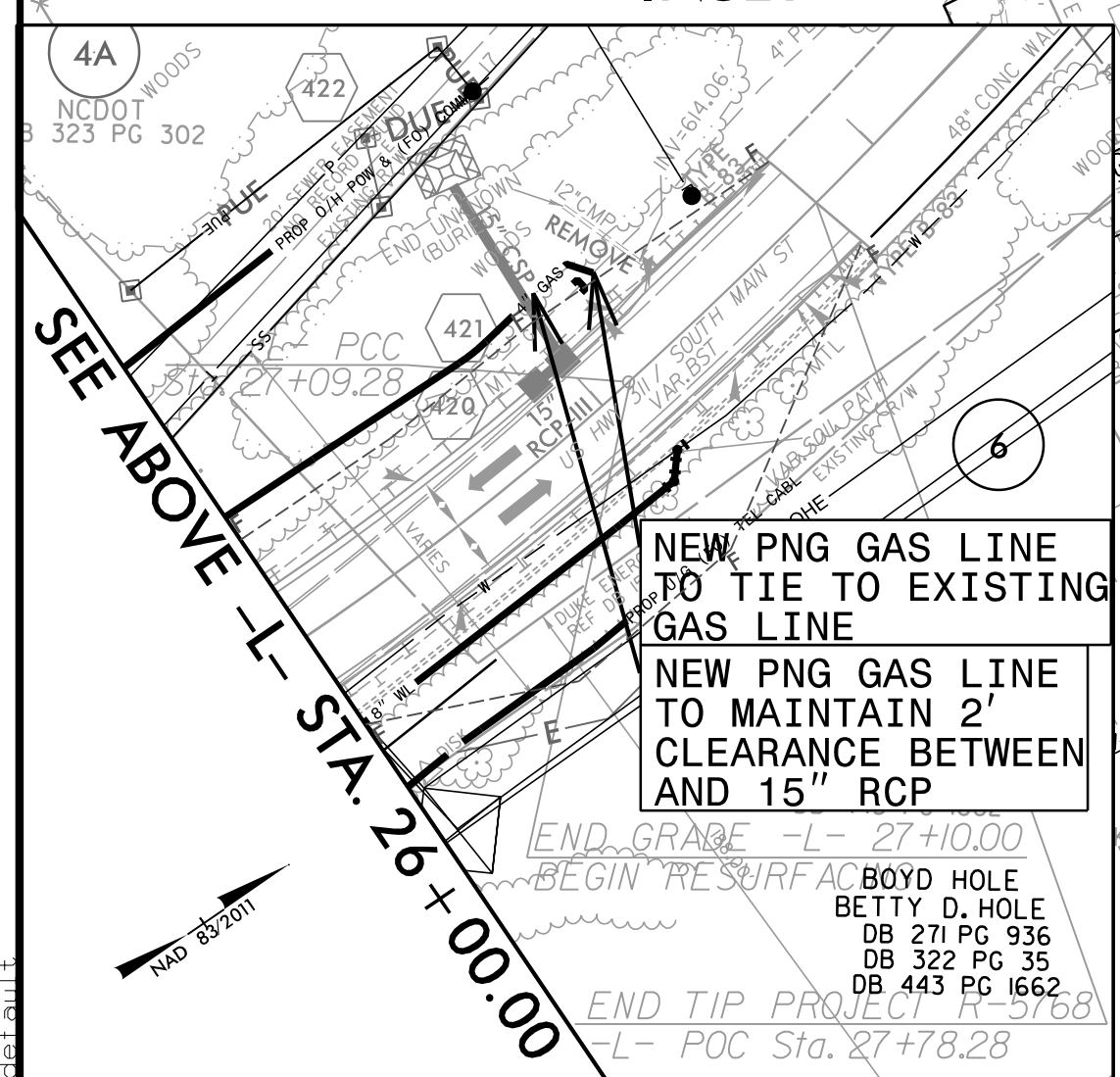
NEW PIEDMONT NATURAL GAS 4" GAS LINE

PROPOSED HAND HOLE
 BOYD HOLE BETTY D. HOLE DB 271 PG 936 DB 322 PG 35 DB 443 PG 1662

EXISTING PNG TO BE ABANDONED IN PLACE
 NEW AERIAL DUKE POWER
 NEW UNDERGROUND WILKES FIBER
 NEW UNDERGROUND DUKE POWER
 TWO FIBER VAULTS AND ONE PEDESTAL

NEW UNDERGROUND WILKES FIBER MIN. 10' BELOW EXISTING
 EXISTING UG CENTURYLINK TO BE RETAINED
 NEW AERIAL DUKE POWER, CENTURYLINK TELECOMMUNICATIONS AND SPECTRUM CATV

EXISTING UG CENTURYLINK TO BE ABANDONED
 EXISTING UG CENTURYLINK TO BE RETAINED



NEW PNG GAS LINE TO TIE TO EXISTING GAS LINE
 NEW PNG GAS LINE TO MAINTAIN 2' CLEARANCE BETWEEN AND 15" RCP

MATCHLINE -Y1- STA. 15+00 SEE UO-SHEET 03
 MATCHLINE -Y1A- STA. 16+50 SEE SHEET UO-03

UTILITY OWNERS ON THIS SHEET

- DUKE ENERGY - POWER (D)
- PIEDMONT NATURAL GAS - NATURAL GAS
- CENTURYLINK - TELECOM
- WILKES COMMUNICATIONS - TELECOM
- SPECTRUM - CATV

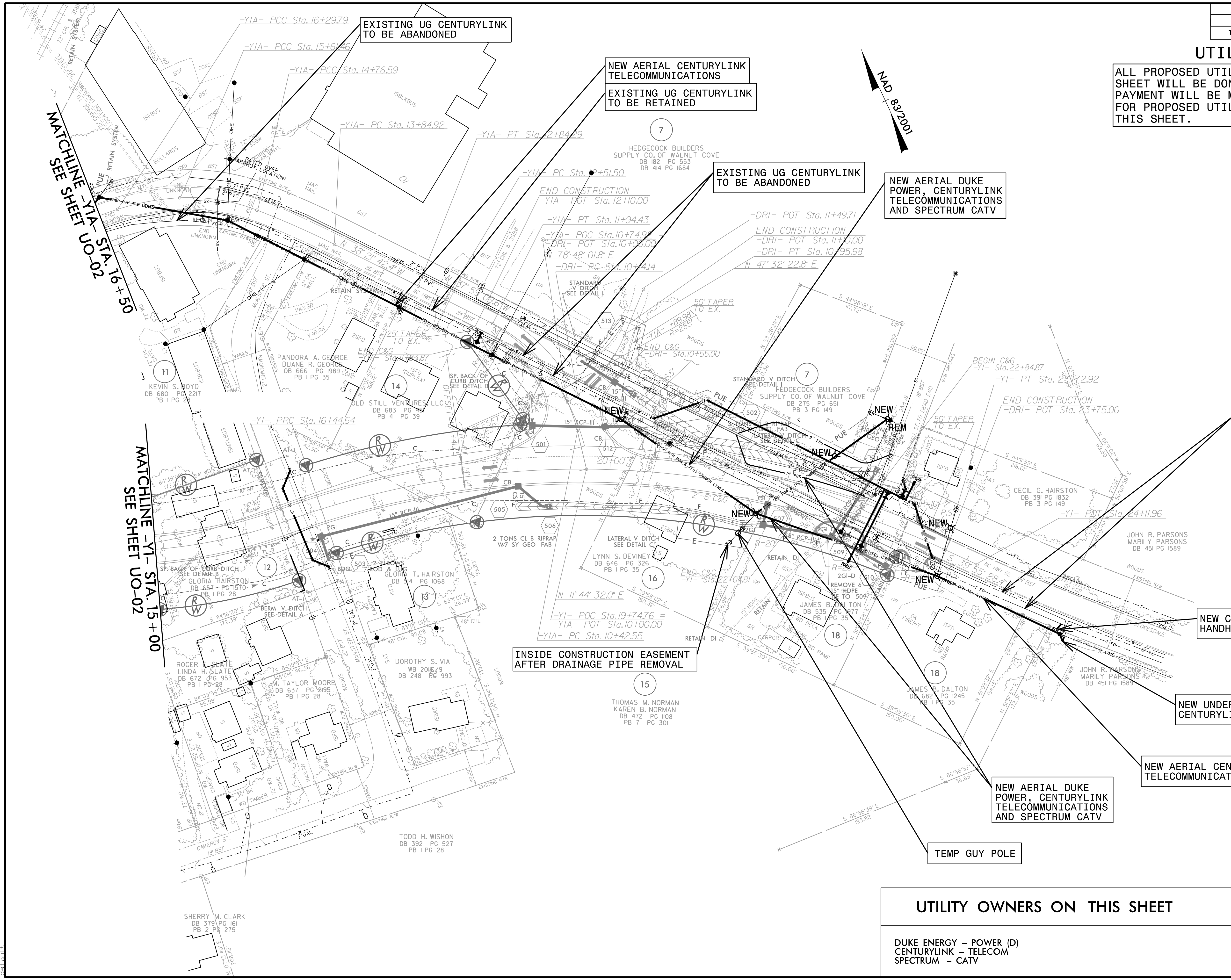
NOTE:
 1. ALL EXISTING POWER ROUTING/CONNECTIVITY PROVIDED BY: DUKE ENERGY AND GOOGLE EARTH



9/13/2022 C:\cloud\Projects\2015\150777_NCWest\SAF\01_R5768\Utilities\Engineering\UO\Pro\UO-5768_Ut_Rdy04_U002.dgn

UTILITIES BY OTHERS

ALL PROPOSED UTILITY WORK SHOWN ON THIS SHEET WILL BE DONE BY OTHERS. NO PAYMENT WILL BE MADE TO THE CONTRACTOR FOR PROPOSED UTILITY WORK SHOWN ON THIS SHEET.



MATCHLINE -YIA- STA. 16+50.00
SEE SHEET UO-02

MATCHLINE -YI- STA. 15+00
SEE SHEET UO-02

EXISTING UG CENTURYLINK TO BE ABANDONED

NEW AERIAL CENTURYLINK TELECOMMUNICATIONS
EXISTING UG CENTURYLINK TO BE RETAINED

EXISTING UG CENTURYLINK TO BE ABANDONED

NEW AERIAL DUKE POWER, CENTURYLINK TELECOMMUNICATIONS AND SPECTRUM CATV

EXISTING UG CENTURYLINK TO BE ABANDONED

NEW CENTURYLINK HANDHOLE

NEW UNDERGROUND CENTURYLINK FIBER

NEW AERIAL CENTURYLINK TELECOMMUNICATIONS

NEW AERIAL DUKE POWER, CENTURYLINK TELECOMMUNICATIONS AND SPECTRUM CATV

TEMP GUY POLE

INSIDE CONSTRUCTION EASEMENT AFTER DRAINAGE PIPE REMOVAL

UTILITY OWNERS ON THIS SHEET

DUKE ENERGY - POWER (D)
CENTURYLINK - TELECOM
SPECTRUM - CATV

NOTE:

1. ALL EXISTING POWER ROUTING/CONNECTIVITY PROVIDED BY; DUKE ENERGY AND GOOGLE EARTH



P: (919) 878-9560
8601 Six Forks Road, Forum 1, Suite 700
Raleigh, North Carolina 27615-3960
NC License No. F-0112
Engineers | Construction Managers | Planners | Scientists
www.rkk.com
Responsive People | Creative Solutions

9/13/2022
\\s04-rk-k.com\fa\cloud\Projects\2015\15077_NCWest\SA\F01_R5768\Design\Utilities\Engineering\UBD\Proj\R-5768_Ut_RdY05_U003.dgn