

**This electronic collection of documents is provided
for the convenience of the user
and is Not a Certified Document –**

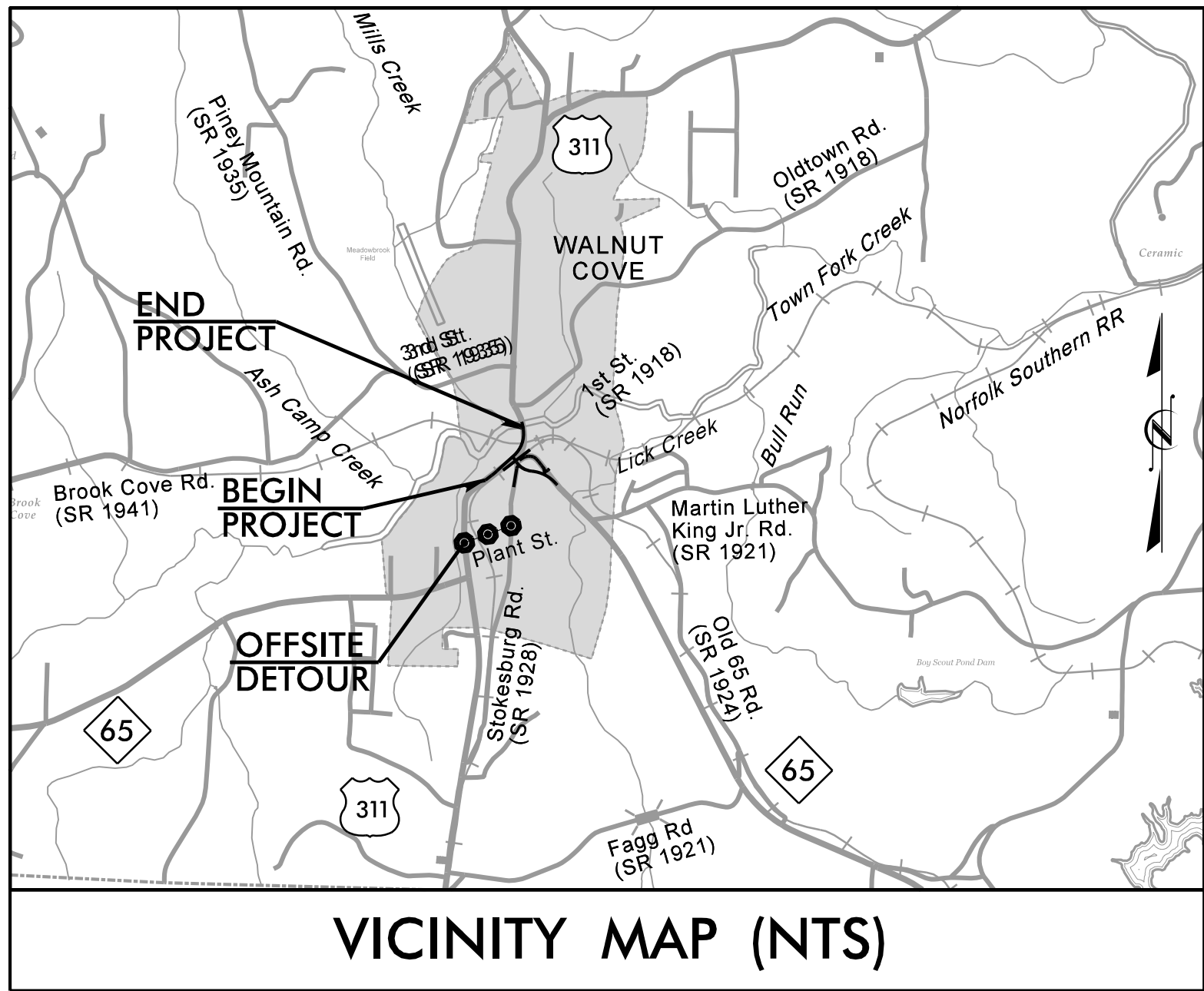
**The documents contained herein were originally issued
and sealed by the individuals whose names and license
numbers appear on each page, on the dates appearing
with their signature on that page.**

**This file or an individual page
shall not be considered a certified document.**

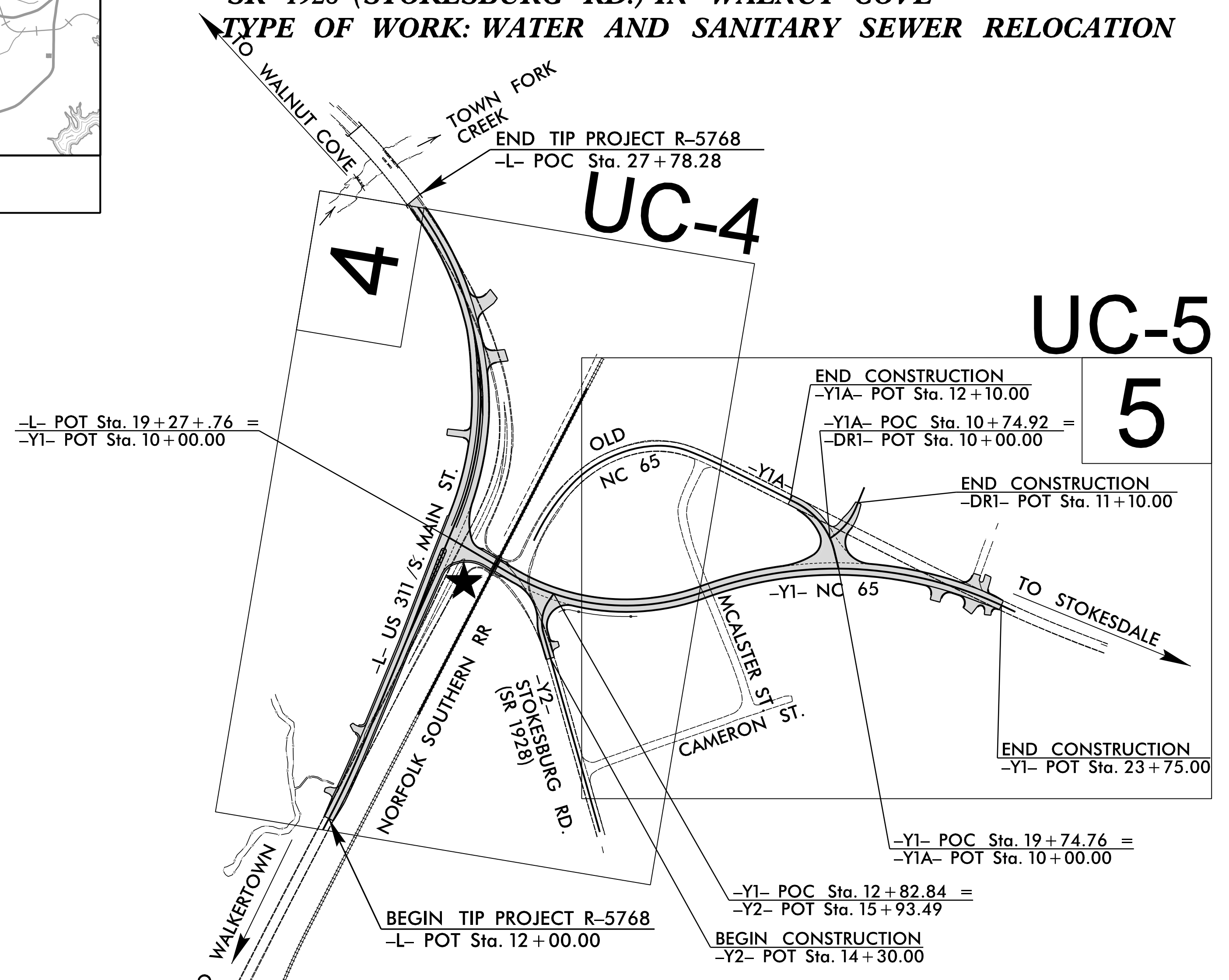
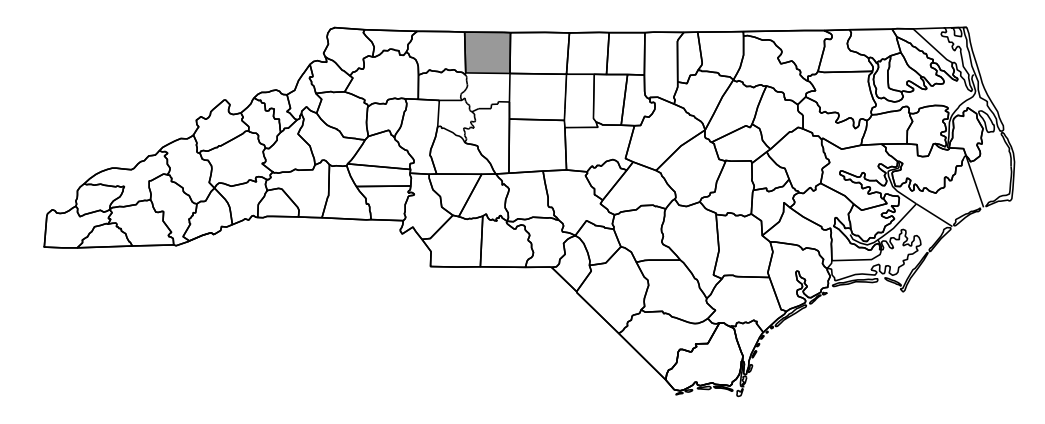
STATE OF NORTH CAROLINA
DIVISION OF HIGHWAYS

UTILITY CONSTRUCTION PLANS STOKES COUNTY

TIP PROJECT: R-5768



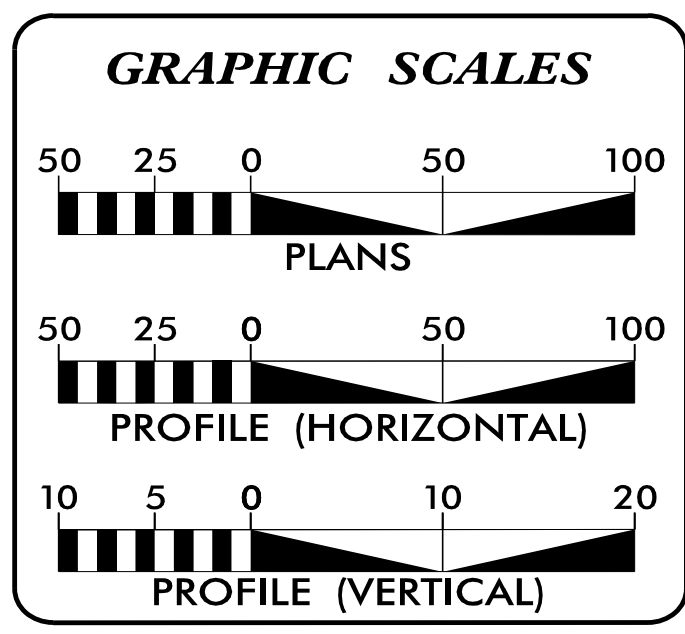
**LOCATION: US 311 / NC 65 IN VICINITY OF
SR 1928 (STOKESBURG RD.) IN WALNUT COVE**
TYPE OF WORK: WATER AND SANITARY SEWER RELOCATION



- NOTES:**
1. THIS PROJECT IS WITHIN THE MUNICIPAL BOUNDARY OF WALNUT COVE.
 2. CLEARING ON THIS PROJECT SHALL BE PERFORMED TO THE LIMITS ESTABLISHED BY METHOD III.

★ SIGNALIZED INTERSECTION

DOCUMENT NOT CONSIDERED FINAL
UNLESS ALL SIGNATURES COMPLETED



INDEX OF SHEETS

SHEET NO.:	DESCRIPTION:
UC-1	TITLE SHEET
UC-2	UTILITY SYMBOLOGY
UC-3	NOTES
UC-3A	DETAILS
UC-4 THRU UC-5	UTILITY CONSTRUCTION SHEETS
UC-6 THRU UC-7	PROFILE SHEETS

WATER AND SEWER OWNERS ON PROJECT

WATER & SEWER - TOWN OF WALNUT COVE

PREPARED IN THE OFFICE OF

RK&K
RUMMEL, KLEPPER & KAHL, LLP
8601 SIX FORKS RD. FORUM-1, STE 700
RALEIGH, NORTH CAROLINA 27615
NC LICENSE NO. F-0112
1-888-521-4455 OR 919-878-9560

HOWARD WOODALL, P.E. CONSULTANT CONTACT #1
BRYAN BADEY, P.E. CONSULTANT CONTACT #2
MARKO PYATT, P.E. CONSULTANT CONTACT #3

UTILITY ENGINEER:

11/9/2022

**DIVISION OF HIGHWAYS
UTILITIES UNIT**
1555 MAIL SERVICES CENTER
RALEIGH, NC 27699-1555
PHONE (919) 707-6690
FAX (919) 250-4151

CONNIE JAMES, P.E. UTILITIES REGIONAL ENGINEER
XXXX UTILITIES ENGINEER
XXXX UTILITIES AREA COORDINATOR
XXXX UTILITIES COORDINATOR

STATE OF NORTH CAROLINA
DIVISION OF HIGHWAYS

UTILITIES PLAN SHEET SYMBOLS

PROPOSED WATER SYMBOLS

Water Line (Sized as Shown)	
11 1/4 Degree Bend	
22 1/2 Degree Bend	
45 Degree Bend	
90 Degree Bend	
Plug	
Tee	
Cross	
Reducer	
Gate Valve	
Butterfly Valve	
Tapping Valve	
Line Stop	
Line Stop with Bypass	
Blow Off	
Fire Hydrant	
Relocate Fire Hydrant	
Remove Fire Hydrant	
Water Meter	
Relocate Water Meter	
Remove Water Meter	
Water Pump Station	
RPZ Backflow Preventer	
DCV Backflow Preventer	
Relocate RPZ Backflow Preventer	
Relocate DCV Backflow Preventer	

PROPOSED SEWER SYMBOLS

Gravity Sewer Line (Sized as Shown)	
Force Main Sewer Line (Sized as Shown)	
Manhole (Sized per Note)	
Sewer Pump Station	

PROPOSED MISCELLANEOUS UTILITIES SYMBOLS

Power Pole	
Telephone Pole	
Joint Use Pole	
Telephone Pedestal	
Utility Line by Others (Type as Shown)	
Trenchless Installation	
Encasement by Open Cut	
Encasement	

Thrust Block	
Air Release Valve	
Utility Vault	
Concrete Pier	
Steel Pier	
Plan Note	
Pay Item Note	

EXISTING UTILITIES SYMBOLS

Power Pole		*Underground Power Line	
Telephone Pole		*Underground Telephone Cable	
Joint Use Pole		*Underground Telephone Conduit	
Utility Pole		*Underground Fiber Optics Telephone Cable	
Utility Pole with Base		*Underground TV Cable	
H-Frame Pole		*Underground Fiber Optics TV Cable	
Power Transmission Line Tower		*Underground Gas Pipeline	
Water Manhole		Aboveground Gas Pipeline	
Power Manhole		*Underground Water Line	
Telephone Manhole		Aboveground Water Line	
Sanitary Sewer Manhole		*Underground Gravity Sanitary Sewer Line	
Hand Hole for Cable		Aboveground Gravity Sanitary Sewer Line	
Power Transformer		*Underground SS Forced Main Line	
Telephone Pedestal		Underground Unknown Utility Line	
CATV Pedestal		SUE Test Hole	
Gas Valve		Water Meter	
Gas Meter		Water Valve	
Located Miscellaneous Utility Object		Fire Hydrant	
Abandoned According to Utility Records		Sanitary Sewer Cleanout	
End of Information			

*For Existing Utilities
 Utility Line Drawn from Record
 (Type as Shown)
 Designated Utility Line
 (Type as Shown)

5/14/99
11/9/2022 UC\Projects\R-5768-ut-sym-UC02-ps.sh.dgn
REV: 2/1/2012


5/14/99
11/9/2022
I:\Users\Engineer\UC\Proj\UC-5768-ut-notes_UC03.psh.dgn

UTILITY CONSTRUCTION

GENERAL NOTES:

1. THE PROPOSED UTILITY CONSTRUCTION SHALL MEET THE APPLICABLE REQUIREMENTS OF THE NC DEPARTMENT OF TRANSPORTATION'S "STANDARD SPECIFICATIONS FOR ROADS AND STRUCTURES" DATED JANUARY 2018.
2. THE EXISTING UTILITIES BELONG TO TOWN OF WALNUT COVE.
3. ALL WATER LINES TO BE INSTALLED WITHIN COMPLIANCE OF THE RULES AND REGULATIONS OF THE NORTH CAROLINA DEPARTMENT OF ENVIRONMENTAL QUALITY, DIVISION OF WATER RESOURCES, PUBLIC WATER SUPPLY SECTION. ALL SEWER LINES TO BE INSTALLED WITHIN COMPLIANCE OF THE RULES AND REGULATIONS OF THE NORTH CAROLINA DEPARTMENT OF ENVIRONMENT QUALITY, DIVISION OF WATER RESOURCES, WATER QUALITY SECTION. PERFORM ALL WORK IN ACCORDANCE WITH THE APPLICABLE PLUMBING CODES.
4. THE UTILITY OWNER OWNS THE EXISTING UTILITY FACILITIES AND WILL OWN THE NEW UTILITY FACILITIES AFTER ACCEPTANCE BY THE DEPARTMENT. THE DEPARTMENT OWNS THE CONSTRUCTION CONTRACT AND HAS ADMINISTRATIVE AUTHORITY. COMMUNICATIONS AND DECISIONS BETWEEN THE CONTRACTOR AND UTILITY OWNER ARE NOT BINDING UPON THE DEPARTMENT OR THIS CONTRACT UNLESS AUTHORIZED BY THE ENGINEER. AGREEMENTS BETWEEN THE UTILITY OWNER AND CONTRACTOR FOR THE WORK THAT IS NOT PART OF THIS CONTRACT OR IS SECONDARY TO THIS CONTRACT ARE ALLOWED, BUT ARE NOT BINDING UPON THE DEPARTMENT.
5. PROVIDE ACCESS FOR THE DEPARTMENT PERSONNEL AND THE OWNER'S REPRESENTATIVES TO ALL PHASES OF CONSTRUCTION. NOTIFY DEPARTMENT PERSONNEL AND THE UTILITY OWNER TWO WEEKS PRIOR TO COMMENCEMENT OF ANY WORK AND ONE WEEK PRIOR TO SERVICE INTERRUPTION. KEEP UTILITY OWNERS' REPRESENTATIVES INFORMED OF WORK PROGRESS AND PROVIDE OPPORTUNITY FOR INSPECTION OF CONSTRUCTION AND TESTING.

6. THE PLANS DEPICT THE BEST AVAILABLE INFORMATION FOR THE LOCATION, SIZE, AND TYPE OF MATERIAL FOR ALL EXISTING UTILITIES. MAKE INVESTIGATIONS FOR DETERMINING THE EXACT LOCATION, SIZE, AND TYPE MATERIAL OF THE EXISTING FACILITIES AS NECESSARY FOR THE CONSTRUCTION OF THE PROPOSED UTILITIES AND FOR AVOIDING DAMAGE TO EXISTING FACILITIES. REPAIR ANY DAMAGE INCURRED TO EXISTING FACILITIES TO THE ORIGINAL OR BETTER CONDITION AT NO ADDITIONAL COST TO THE DEPARTMENT.
7. MAKE FINAL CONNECTIONS OF THE NEW WORK TO THE EXISTING SYSTEM WHERE INDICATED ON THE PLANS, AS REQUIRED TO FIT THE ACTUAL CONDITIONS, OR AS DIRECTED.
8. MAKE CONNECTIONS BETWEEN EXISTING AND PROPOSED UTILITIES AT TIMES MOST CONVENIENT TO THE PUBLIC, WITHOUT ENDANGERING THE UTILITY SERVICE, AND IN ACCORDANCE WITH THE UTILITY OWNER'S REQUIREMENTS. MAKE CONNECTIONS ON WEEKENDS, AT NIGHT, AND ON HOLIDAYS IF NECESSARY.
9. ALL UTILITY MATERIALS SHALL BE APPROVED PRIOR TO DELIVERY TO THE PROJECT. SEE 1500-7, " SUBMITTALS AND RECORDS" IN SECTION 1500 OF THE STANDARD SPECIFICATIONS.

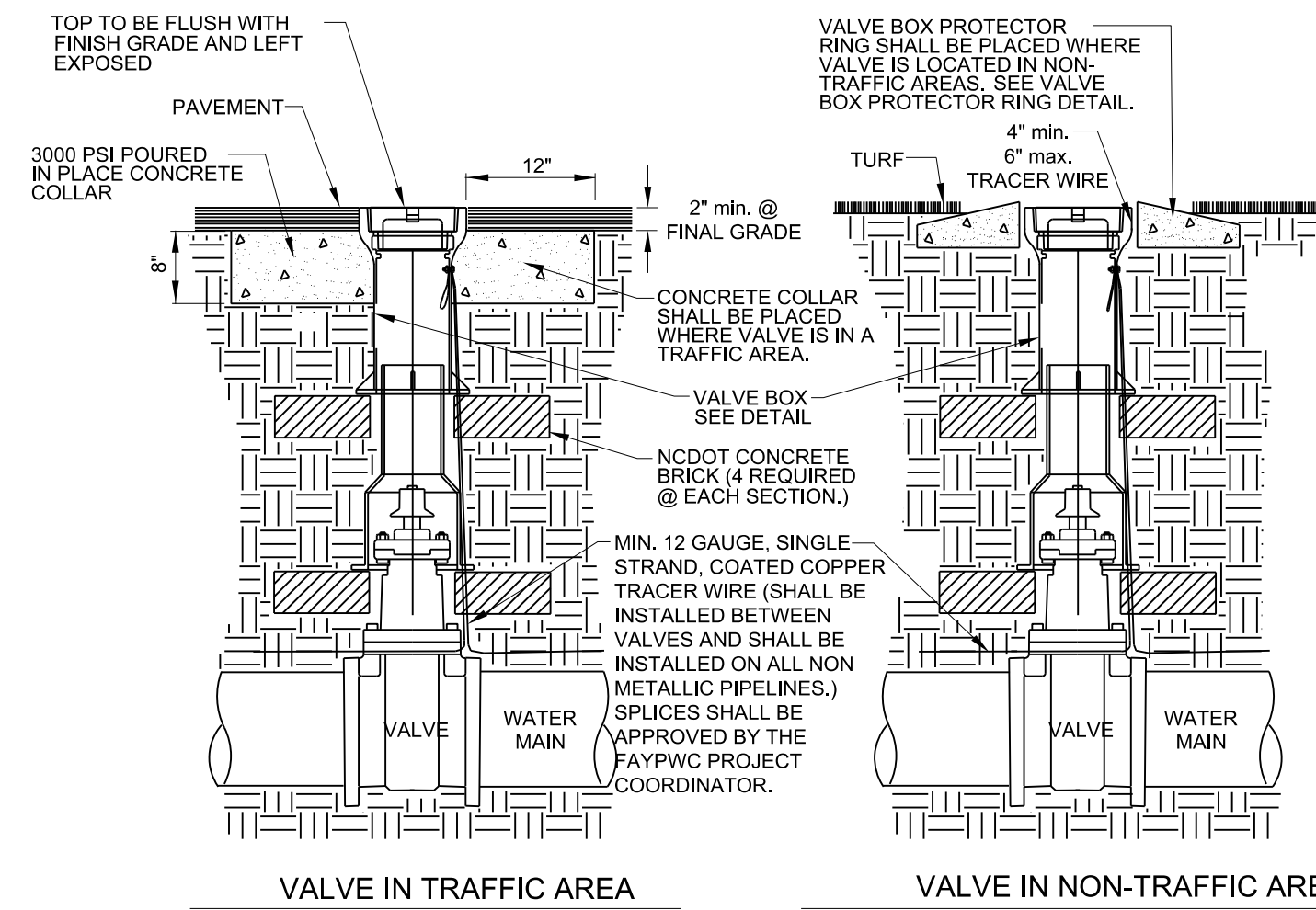
PROJECT REFERENCE NO.	SHEET NO.
R-5768	UC-3
DESIGNED BY: MEP	
DRAWN BY: MEP	
CHECKED BY: BMB	
APPROVED BY: BMB	
REVISED:	
NORTH CAROLINA DEPARTMENT OF TRANSPORTATION	
UTILITIES ENGINEERING SEC. PHONE: (919) 707-6690 FAX: (919) 250-4151	

UTILITY CONSTRUCTION

DOCUMENT NOT CONSIDERED FINAL
UNLESS ALL SIGNATURES COMPLETED

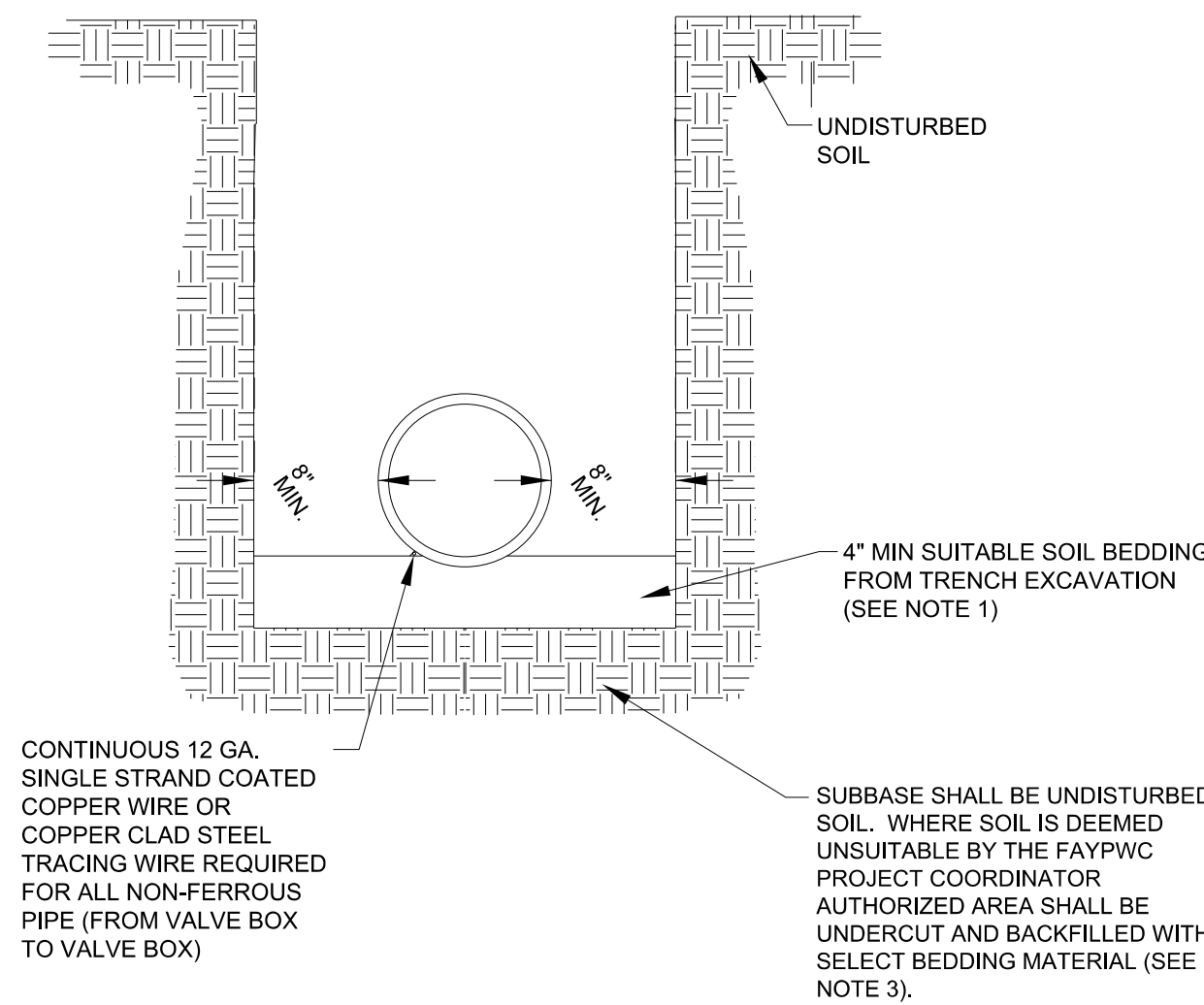
UTILITY CONSTRUCTION
DOCUMENT NOT CONSIDERED
FINAL UNLESS
ALL SIGNATURES COMPLETED

GATE VALVE DETAIL



- NOTES:**
1. ALL MATERIALS SHALL BE IN ACCORDANCE WITH FAYPWC STANDARDS.
 2. RESILIENT WEDGE GATE VALVE SHALL BE AS MANUFACTURED BY MUELLER CORP., AMERICAN DARLING OR GLOW CORP.
 3. ALL VALVES SHALL HAVE 2\" SQUARE OPERATING NUT AND SHALL OPEN COUNTERCLOCKWISE.
 4. VALVE BODY, BONNET AND GATE SHALL BE IN ACCORDANCE WITH AWWA C-509/C-515 AND NSF61.
 5. VALVE BODY AND BONNET SHALL BE COATED ON ALL INTERIOR AND EXTERIOR SURFACES WITH A FUSION BONDED EPOXY IN ACCORDANCE WITH AWWA C-550-90.
 6. ALL VALVES 24\" AND SMALLER SHALL HAVE A SAFE WORKING PRESSURE OF 250 PSI.
 7. SEE VALVE BOX DETAIL FOR ADDITIONAL INFORMATION.
 8. SEE VALVE BOX PROTECTOR RING DETAIL FOR ADDITIONAL INFORMATION.
 9. VALVE BOX SECTIONS ARE REQUIRED. THE USE OF PIPE IN LIEU OF VALVE BOX SECTIONS SHALL NOT BE PERMITTED.

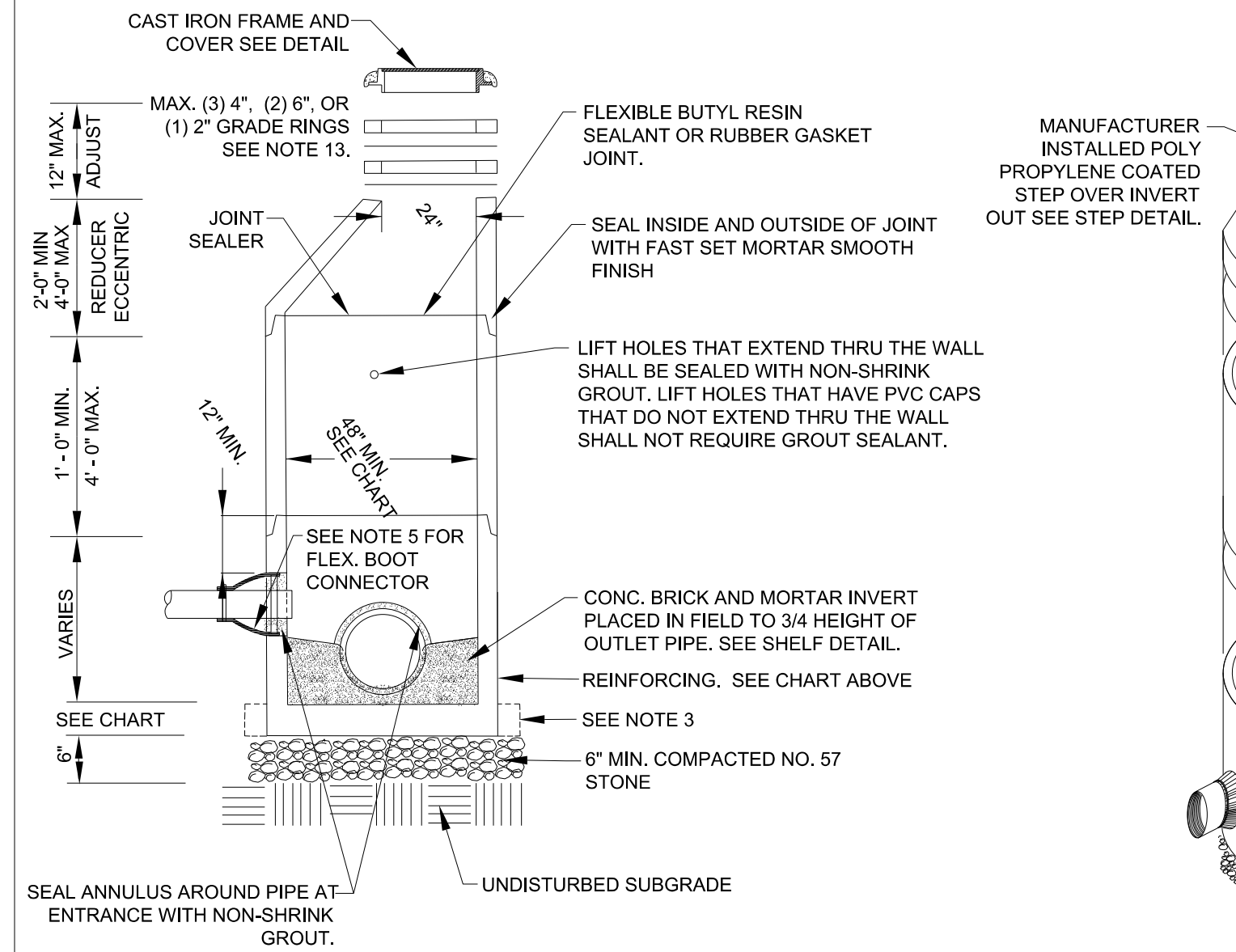
WATER MAIN BEDDING DETAIL



- NOTES:**
1. SUITABLE SOIL BEDDING IS DEFINED AS \"NATIVE\" SOIL EXCAVATED FROM THE TRENCH, FREE OF ROCKS, FOREIGN MATERIAL, AND FROZEN EARTH.
 2. SUITABLE BEDDING MATERIAL SHALL EXTEND TO UNDISTURBED TRENCH WALLS.
 3. IF GROUND CONDITIONS WARRANT, IT MAY BE NECESSARY TO BED DUCTILE IRON WATER MAINS IN SELECT BEDDING MATERIAL (NO.5 OR NO.57 STONE) TO THE SPRINGLINE OF THE PIPE. SUCH INSTALLATION SHALL BE AS DIRECTED BY THE FAYPWC PROJECT COORDINATOR.

STANDARD MANHOLE

MANHOLE DIAMETER SIZES MAY BE ADJUSTED ON THE PLANS TO REFLECT SPECIAL CIRCUMSTANCES. REDUCING SLABS ARE NOT ACCEPTABLE ON MANHOLES LESS THAN 6\" DIAMETER.



STANDARD MANHOLE NOTES

- NOTES:**
1. PRECAST REINFORCED CONCRETE MANHOLES SHALL BE IN ACCORDANCE WITH ASTM C-478.
 2. MINIMUM CONCRETE COMPRESSIVE STRENGTH SHALL BE 4,000PSI.
 3. MANHOLES GREATER THAN 12\" DEPTH SHALL HAVE MINIMUM 6\" EXTENDED BASE.
 4. FLEXIBLE BUTYL RESIN JOINT SEALANT SHALL BE IN ACCORDANCE WITH ASTM C990. RUBBER GASKET JOINTS SHALL BE IN ACCORDANCE WITH ASTM C-443.
 5. FLEXIBLE EPDM RUBBER BOOT CONNECTORS SHALL BE IN ACCORDANCE WITH ASTM C923. INSTALLED BY MANUFACTURER WITH STAINLESS STEEL COMPRESSION RING AND TAKE-UP CLAMP. CONNECTION TO MAIN SHALL BE BY CONTRACTOR WITH STAINLESS STEEL PIPE CLAMP.
 6. CONNECTIONS TO EXISTING MANHOLES SHALL BE BY CORING MANHOLE AND FIELD INSTALLING A FLEXIBLE EPDM RUBBER BOOT CONNECTOR. DO NOT ALLOW DEBRIS TO ENTER SYSTEM.
 7. MORTAR SHALL BE QUICK SETTING, NON-SHRINK GROUT MIXED IN ACCORDANCE WITH MANUFACTURER'S RECOMMENDATIONS.
 8. MANHOLE STEPS SHALL BE IN ACCORDANCE WITH ASTM C478 AND OSHA REGULATIONS. ALIGN STEPS WITH INVERT OUT.
 9. PRECAST INVERTS ARE NOT ALLOWED.
 10. VERTICAL DROPS BETWEEN THE INFLOW PIPES AND OUTFLOW PIPES SHALL REQUIRE THE FOLLOWING:
 - A. GREATER THAN 2.5' SEE DROP STRUCTURE DETAIL (MIN. 5\" DIAMETER MH REQUIRED).
 - B. LESS THAN 2.5' SEE PIPE SLIDE DETAIL.
 11. AN ECCENTRIC CONE SHALL BE UTILIZED ON ALL MANHOLES, UNLESS OTHERWISE APPROVED BY FAYPWC.
 12. INVERT ON PLANS IS TO MANHOLE CENTERLINE.
 13. CONCRETE GRADE RINGS SHALL NOT BE USED FOR ABOVE GRADE ADJUSTMENTS (IE: OUTFALL AREAS). USE OF GRADE RINGS ARE ALLOWABLE IN YARD AREAS AND PAVEMENT, WHERE THE RING AND COVER ARE AT GROUND LEVEL.
 14. THE MINIMUM SLOPE ACROSS THE INVERT OF THE MANHOLE SHALL BE 1%, UNLESS OTHERWISE APPROVED BY FAYPWC. STANDING WATER IN INVERT OF MANHOLE IS NOT ACCEPTABLE.
 15. THE EXTERIOR MANHOLE RISER JOINTS, INCLUDING THE JOINT AT THE CONE, SHALL BE SEALED ON THE OUTSIDE BY AN APPROVED JOINT WRAP. THE WRAP SHALL BE IN ACCORDANCE WITH FAYPWC SPECIFICATIONS.
 16. MANHOLE BOOT FOR 4-INCH LATERALS. SHOULD IT BE NECESSARY TO INSTALL A 4-INCH LATERAL INTO A MANHOLE, THE RUBBER BOOT THAT THE LATERAL IS INSERTED INTO SHALL BE SECURELY FASTENED TO THE CORE HOLE BY UTILIZING A STAINLESS STEEL BAND THAT IS TIGHTENED USING A JACK OR A TORQUE WRENCH (DIRECT DRIVE). BOTH STANDARD SIZE AND STEP DOWN BOOTS ARE ALLOWED. THE TORQUE WRENCH SHALL BE SUPPLIED BY THE MANUFACTURER. NO OTHER TYPE BANDS OR METHOD OF SECURING THE BOOT TO THE MANHOLE SHALL BE ACCEPTED.

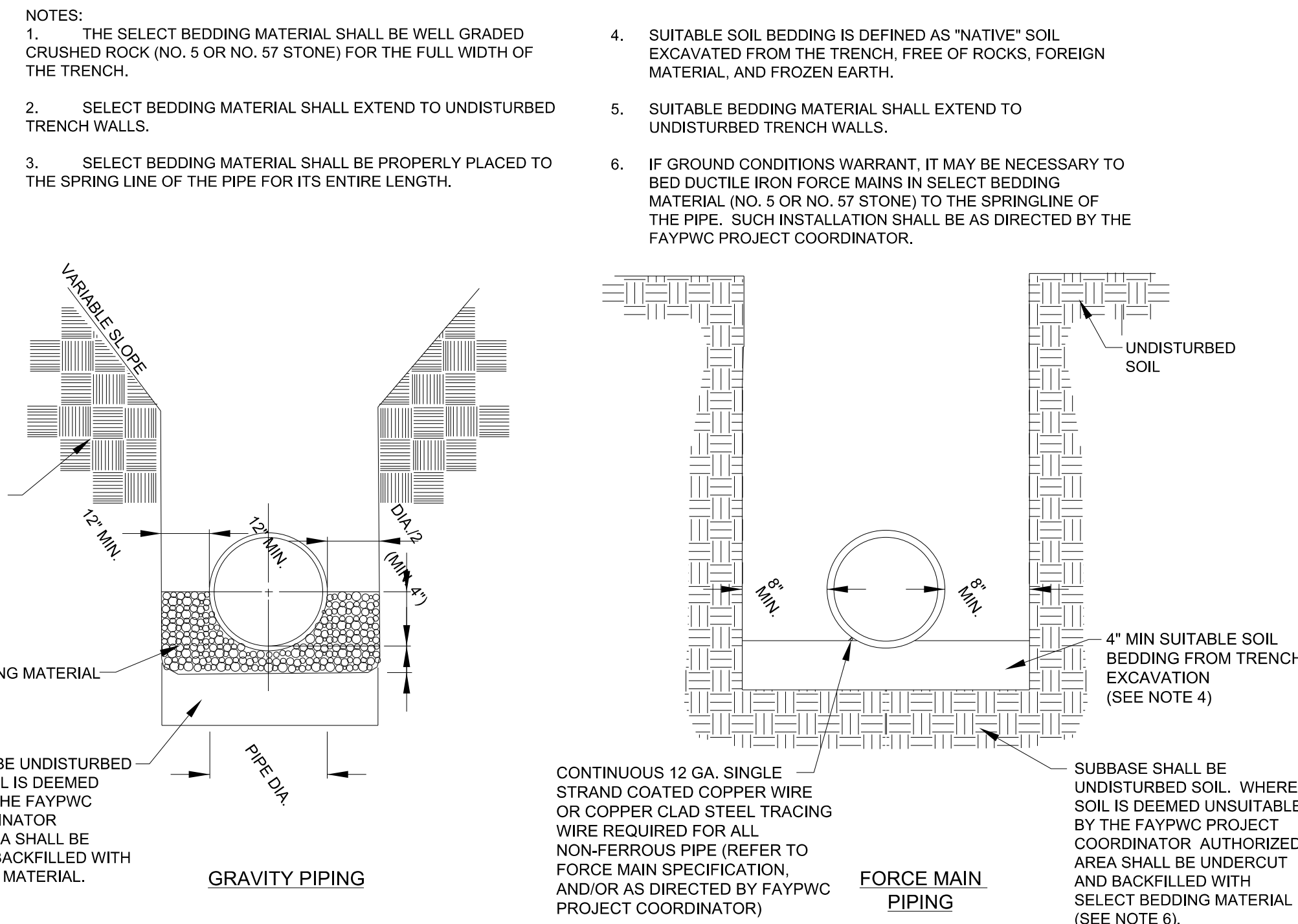
FOR FOUR (4) INCH SDR 26 LATERALS. THE PIPE OUTSIDE DIAMETER RANGE OF THE BOOT SHALL BE 3.5 INCHES TO 4.25 INCHES.

FOR FOUR (4) INCH DUCTILE IRON LATERALS. THE PIPE OUTSIDE DIAMETER RANGE OF THE BOOT SHALL EITHER BE AS FOR VC OR 4.25 INCHES TO 4.81 INCHES.

IN ALL CASES, THE BOOT SHALL BE TIGHTENED ON THE LATERAL BY MEANS OF A SINGLE STAINLESS STEEL STRAP.

THE LATERAL INVERT SHALL BE AT THE TOP OF THE SHELF.
 17. NO MORE THAN 4, FOUR INCH LATERALS OR 3, SIX INCH LATERALS SHALL ENTER A 4\" DIAMETER TERMINAL MANHOLE. NO MORE THAN 2 LATERALS (REGARDLESS OF SIZE) SHALL ENTER ALL OTHER 4\" DIAMETER MANHOLES. ALL LATERALS SHALL HAVE AN INDIVIDUAL TROUGH. 5\" DIAMETER MANHOLES SHALL BE USED IF THE ABOVE CONDITIONS ARE NOT MET.
 18. NO MORE THAN 5 LATERALS SHALL ENTER A 5\" DIAMETER MANHOLE.
 19. USE OF TEE-WYES ON LATERALS IS NOT ALLOWED.
 20. ALL MANHOLES SHALL BE VACUUM TESTED IN ACCORDANCE WITH FAYPWC STANDARDS.

SEWER BEDDING DETAIL



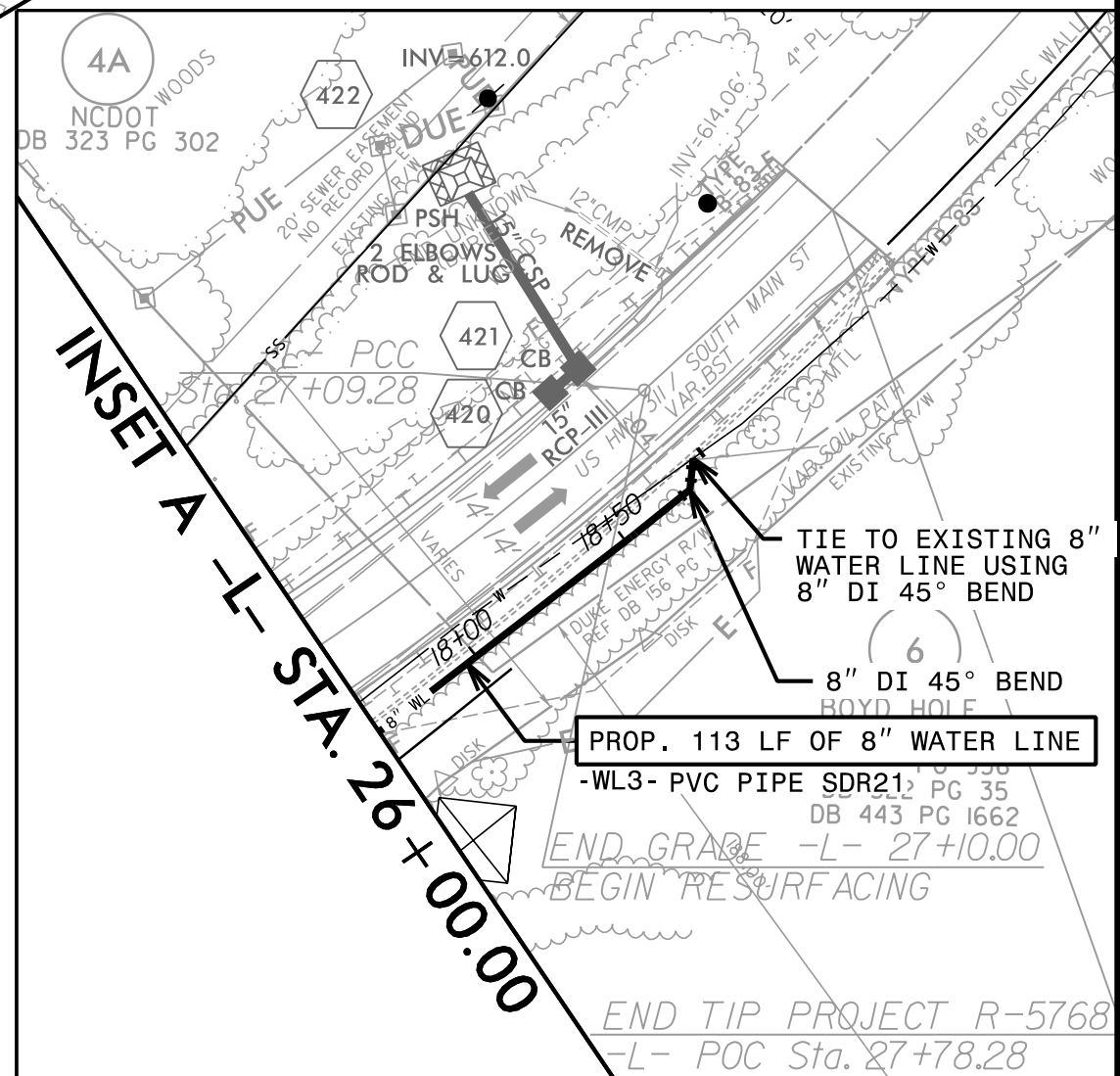
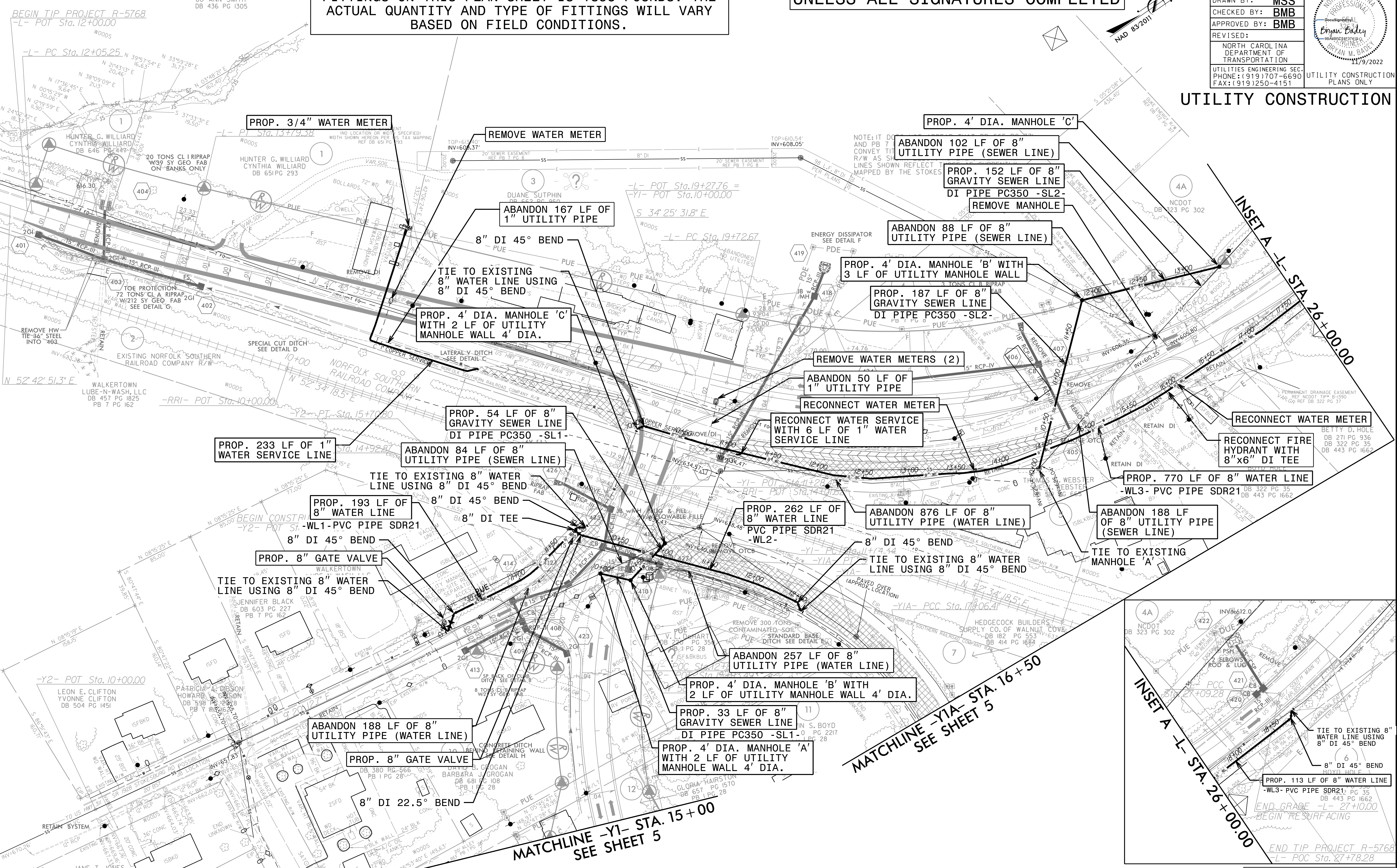
- NOTES:**
1. THE SELECT BEDDING MATERIAL SHALL BE WELL GRADED CRUSHED ROCK (NO. 5 OR NO. 57 STONE) FOR THE FULL WIDTH OF THE TRENCH.
 2. SELECT BEDDING MATERIAL SHALL EXTEND TO UNDISTURBED TRENCH WALLS.
 3. SELECT BEDDING MATERIAL SHALL BE PROPERLY PLACED TO THE SPRING LINE OF THE PIPE FOR ITS ENTIRE LENGTH.
 4. SUITABLE SOIL BEDDING IS DEFINED AS \"NATIVE\" SOIL EXCAVATED FROM THE TRENCH, FREE OF ROCKS, FOREIGN MATERIAL, AND FROZEN EARTH.
 5. SUITABLE BEDDING MATERIAL SHALL EXTEND TO UNDISTURBED TRENCH WALLS.
 6. IF GROUND CONDITIONS WARRANT, IT MAY BE NECESSARY TO BED DUCTILE IRON FORCE MAINS IN SELECT BEDDING MATERIAL (NO. 5 OR NO. 57 STONE) TO THE SPRINGLINE OF THE PIPE. SUCH INSTALLATION SHALL BE AS DIRECTED BY THE FAYPWC PROJECT COORDINATOR.

I:\9\2022\UC-Pr-o\N-R-5768-ut-dt1\UC03A-psb.dgn

UTILITY CONSTRUCTION

THE ESTIMATED QUANTITY OF DUCTILE IRON WATER PIPE FITTINGS ON THIS PLAN SHEET IS 1895 POUNDS. THE ACTUAL QUANTITY AND TYPE OF FITTINGS WILL VARY BASED ON FIELD CONDITIONS.

DOCUMENT NOT CONSIDERED FINAL
UNLESS ALL SIGNATURES COMPLETED



MATCHLINE -Y1A- STA. 16+50
SEE SHEET 5

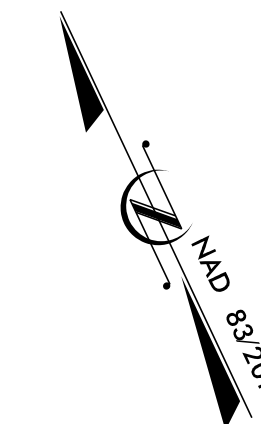
MATCHLINE -Y1- STA. 15+00
SEE SHEET 5



PROPOSED SIGNAL

11/9/2022 UC:\Projects\R-5768\UC-4.dwg UC04_psh.dgn

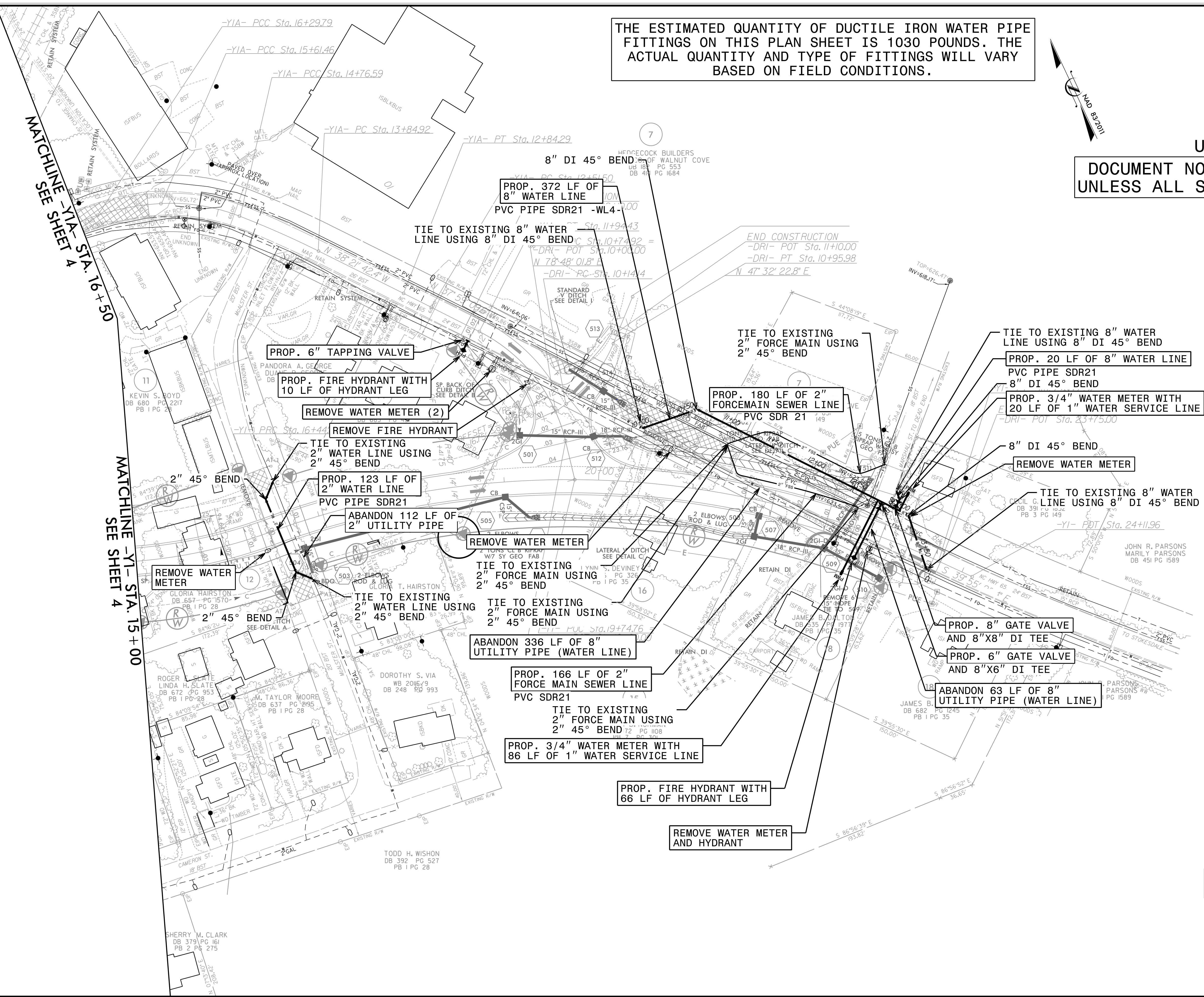
PROJECT REFERENCE NO.	SHEET NO.
R-5768	UC-5
DESIGNED BY: MSS	
DRAWN BY: MSS	
CHECKED BY: BMB	
APPROVED BY: BMB	
REVISED:	
NORTH CAROLINA DEPARTMENT OF TRANSPORTATION	
UTILITIES ENGINEERING SEC. PHONE: (919) 707-6690 FAX: (919) 250-4151	UTILITY CONSTRUCTION PLANS ONLY



THE ESTIMATED QUANTITY OF DUCTILE IRON WATER PIPE FITTINGS ON THIS PLAN SHEET IS 1030 POUNDS. THE ACTUAL QUANTITY AND TYPE OF FITTINGS WILL VARY BASED ON FIELD CONDITIONS.

UTILITY CONSTRUCTION

**DOCUMENT NOT CONSIDERED FINAL
UNLESS ALL SIGNATURES COMPLETED**



MATCHLINE -YIA- STA. 16+50
SEE SHEET 4

MATCHLINE -YI- STA. 15+00
SEE SHEET 4

PAVEMENT REMOVAL

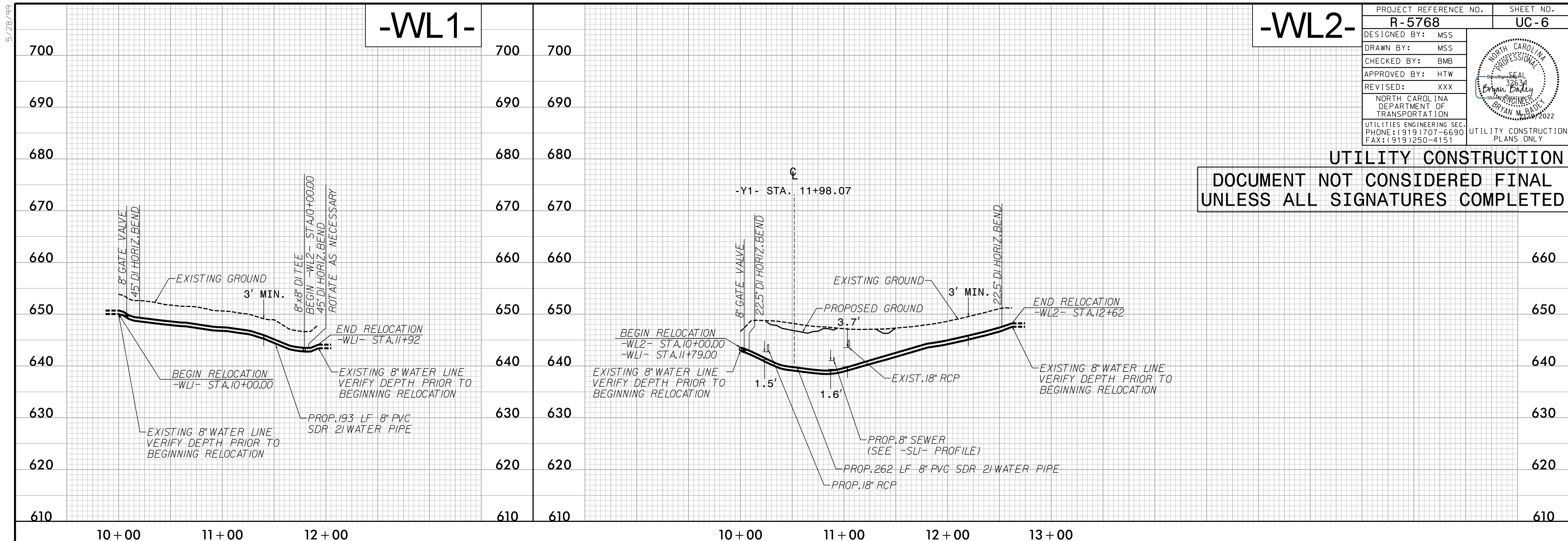
11/9/2022 11:05:00 AM C:\Users\msh\d\OneDrive\Documents\Projects\R-5768\UC-5\UC05_psh.dgn

-WL2-

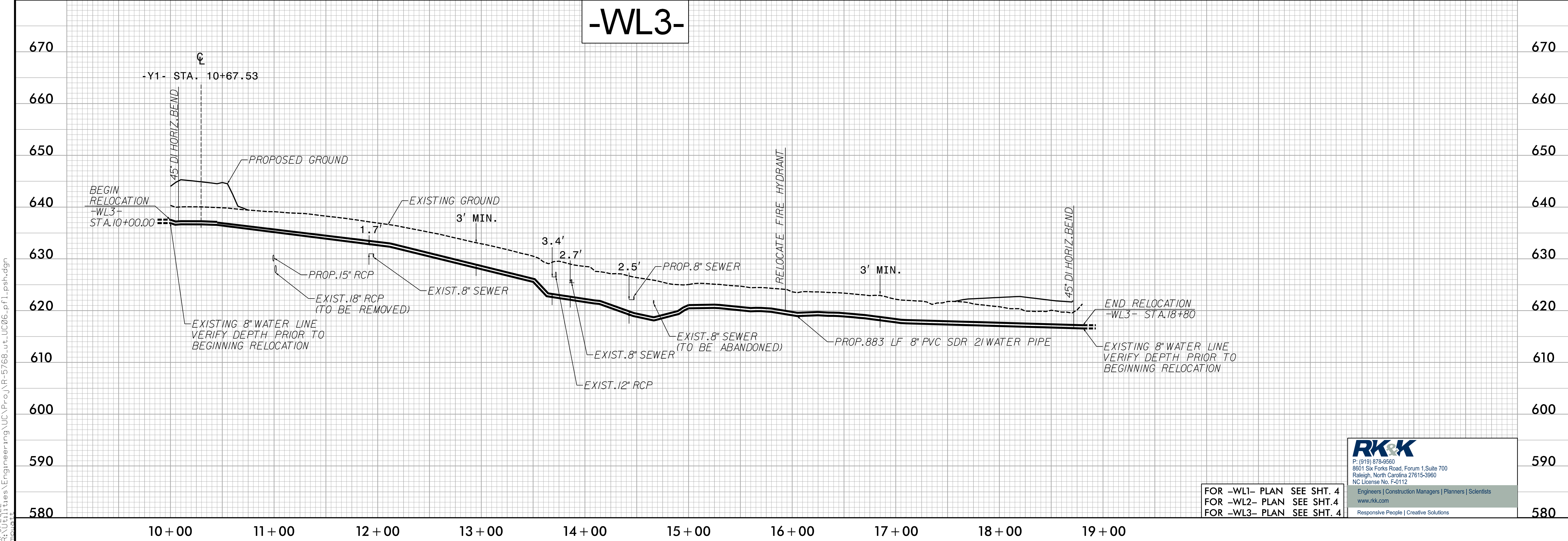
PROJECT REFERENCE NO.	SHEET NO.
R-5768	UC-6
DESIGNED BY: MSS	
DRAWN BY: MSS	
CHECKED BY: BMB	
APPROVED BY: HTW	
REVISED BY: XXX	
NORTH CAROLINA DEPARTMENT OF TRANSPORTATION	
UTILITIES ENGINEERING SEC. PHONE: (919) 707-6690 FAX: (919) 250-4151	UTILITY CONSTRUCTION PLANS ONLY

UTILITY CONSTRUCTION

**DOCUMENT NOT CONSIDERED FINAL
UNLESS ALL SIGNATURES COMPLETED**



-WL3-



P: (919) 878-8580
 8601 Six Forks Road, Forum 1, Suite 700
 Raleigh, North Carolina 27615-3960
 NC License No. F-0112
 Engineers | Construction Managers | Planners | Scientists
 www.rkk.com
 Responsive People | Creative Solutions

FOR -WL1- PLAN SEE SHT. 4
 FOR -WL2- PLAN SEE SHT. 4
 FOR -WL3- PLAN SEE SHT. 4

5/28/2022
 I:\3\2022\16342\16342\Utilities\Engineering\UC\Proj\N-5768-ut_UC06.pfl.psh.dgn
 PROJECT 1

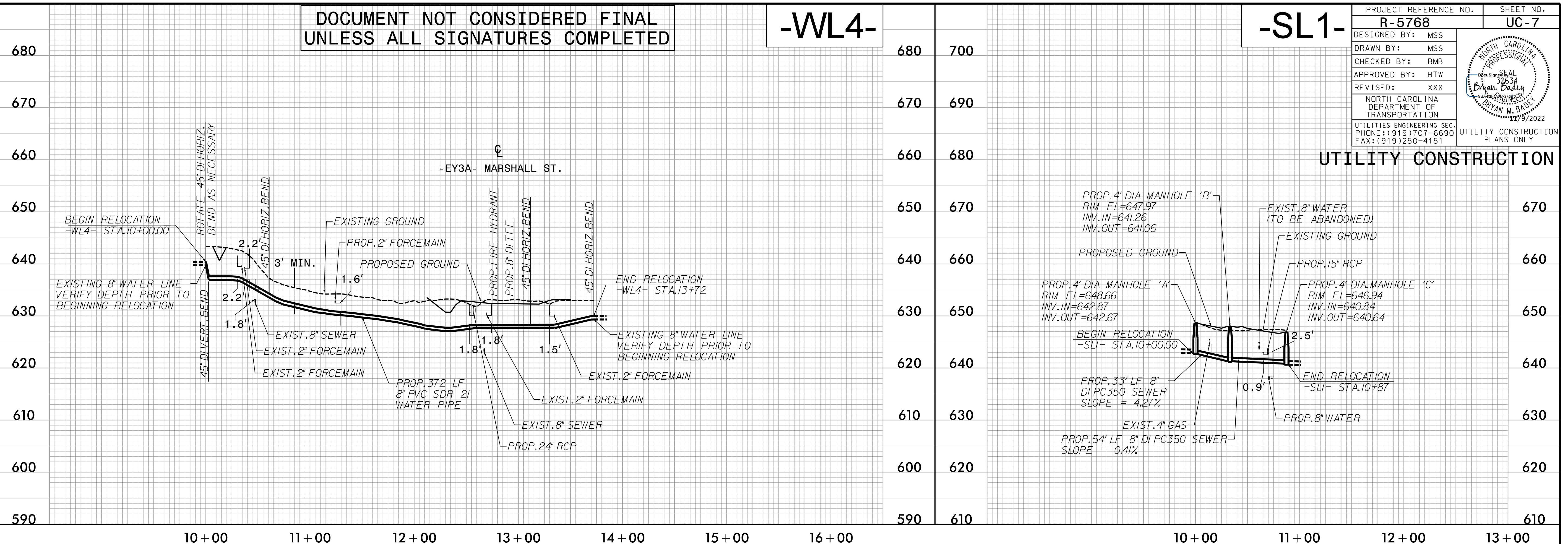
DOCUMENT NOT CONSIDERED FINAL
UNLESS ALL SIGNATURES COMPLETED

-WL4-

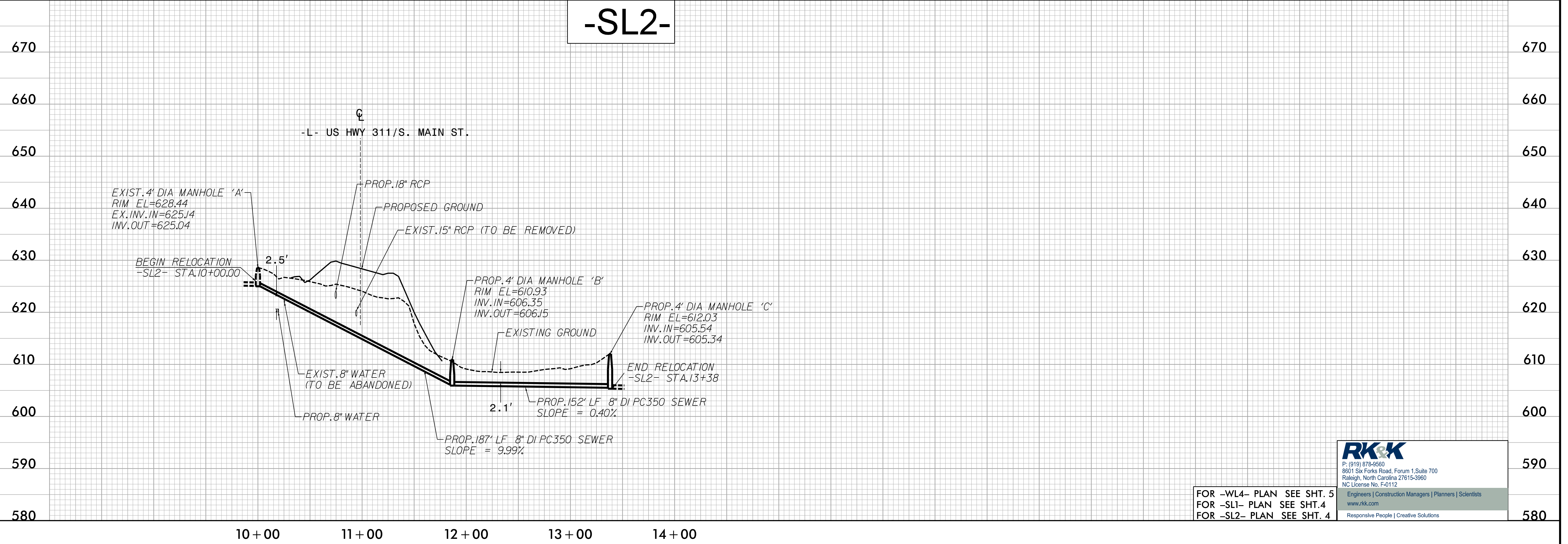
-SL1-

PROJECT REFERENCE NO.	SHEET NO.
R-5768	UC-7
DESIGNED BY: MSS	
DRAWN BY: MSS	
CHECKED BY: BMB	
APPROVED BY: HTW	
REVISER: XXX	UTILITY CONSTRUCTION
NORTH CAROLINA DEPARTMENT OF TRANSPORTATION	
UTILITIES ENGINEERING SEC. PHONE: (919) 707-6690 FAX: (919) 250-4151	

UTILITY CONSTRUCTION



-SL2-



RK&K
 P. (919) 878-8580
 8601 Six Forks Road, Forum 1, Suite 700
 Raleigh, North Carolina 27615-3960
 NC License No. F-0112
 Engineers | Construction Managers | Planners | Scientists
 www.rk.com
 Responsive People | Creative Solutions

FOR -WL4- PLAN SEE SHT. 5
 FOR -SL1- PLAN SEE SHT. 4
 FOR -SL2- PLAN SEE SHT. 4

5/28/2022
 I:\3\2022\143\14302\Engineering\UC\Proj\N-5768-ut_UC07.pfl.psh.dgn
 PROJECT 1