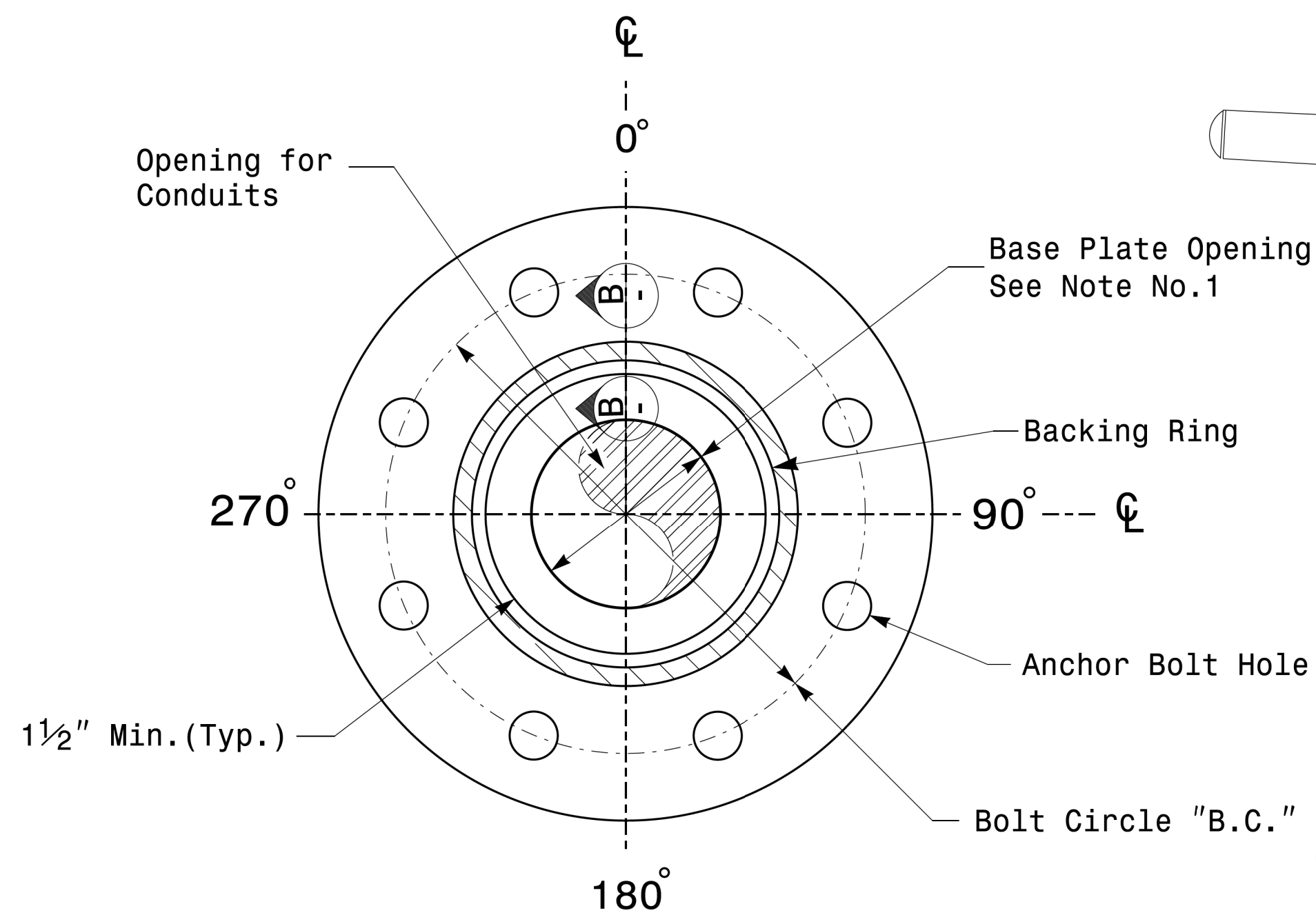
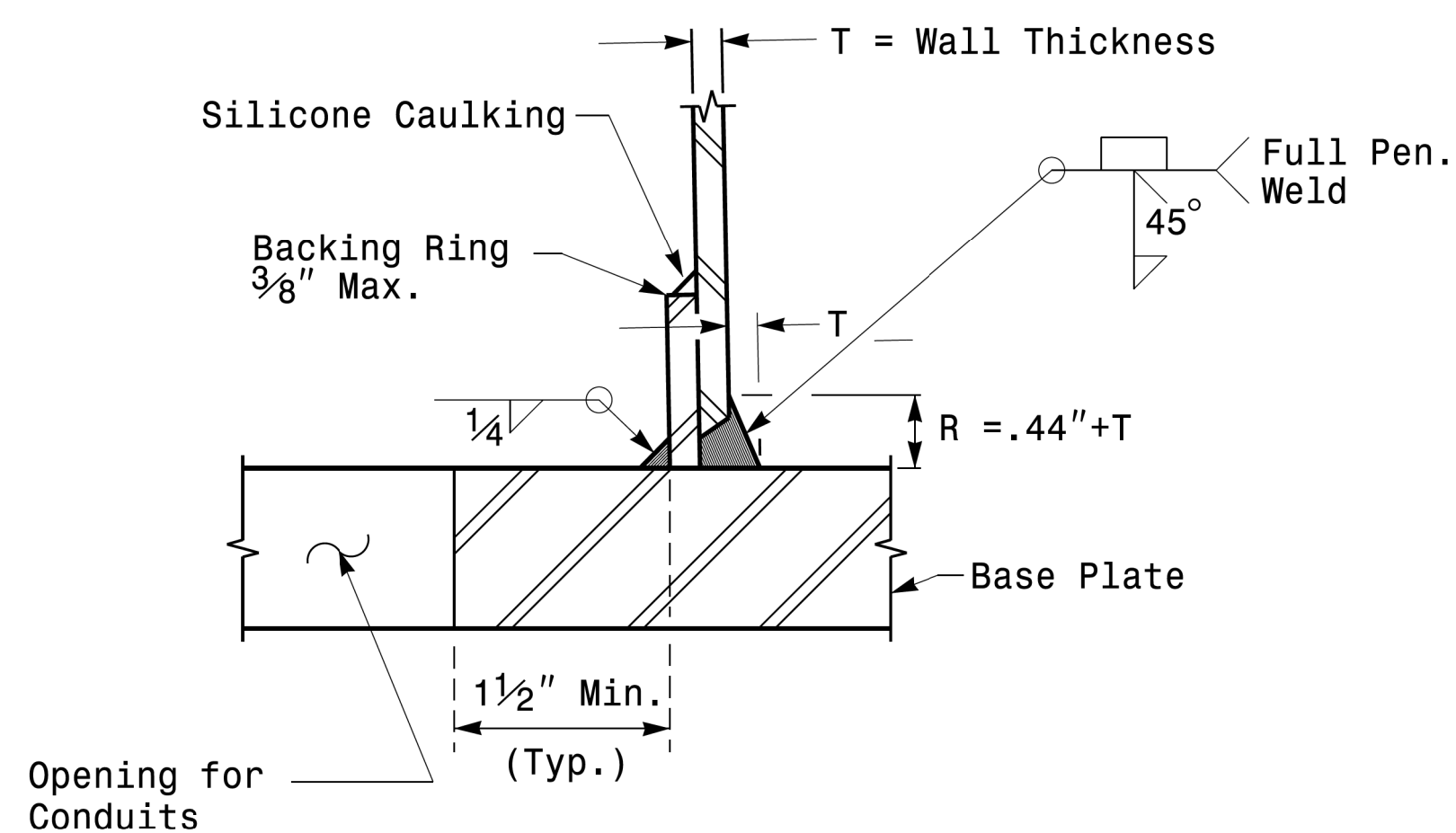


Note:  
 1. Opening in pole base plate shall be equal to pole base inside diameter minus 3 1/2" but shall not be less than 8 1/2".



Section A-A

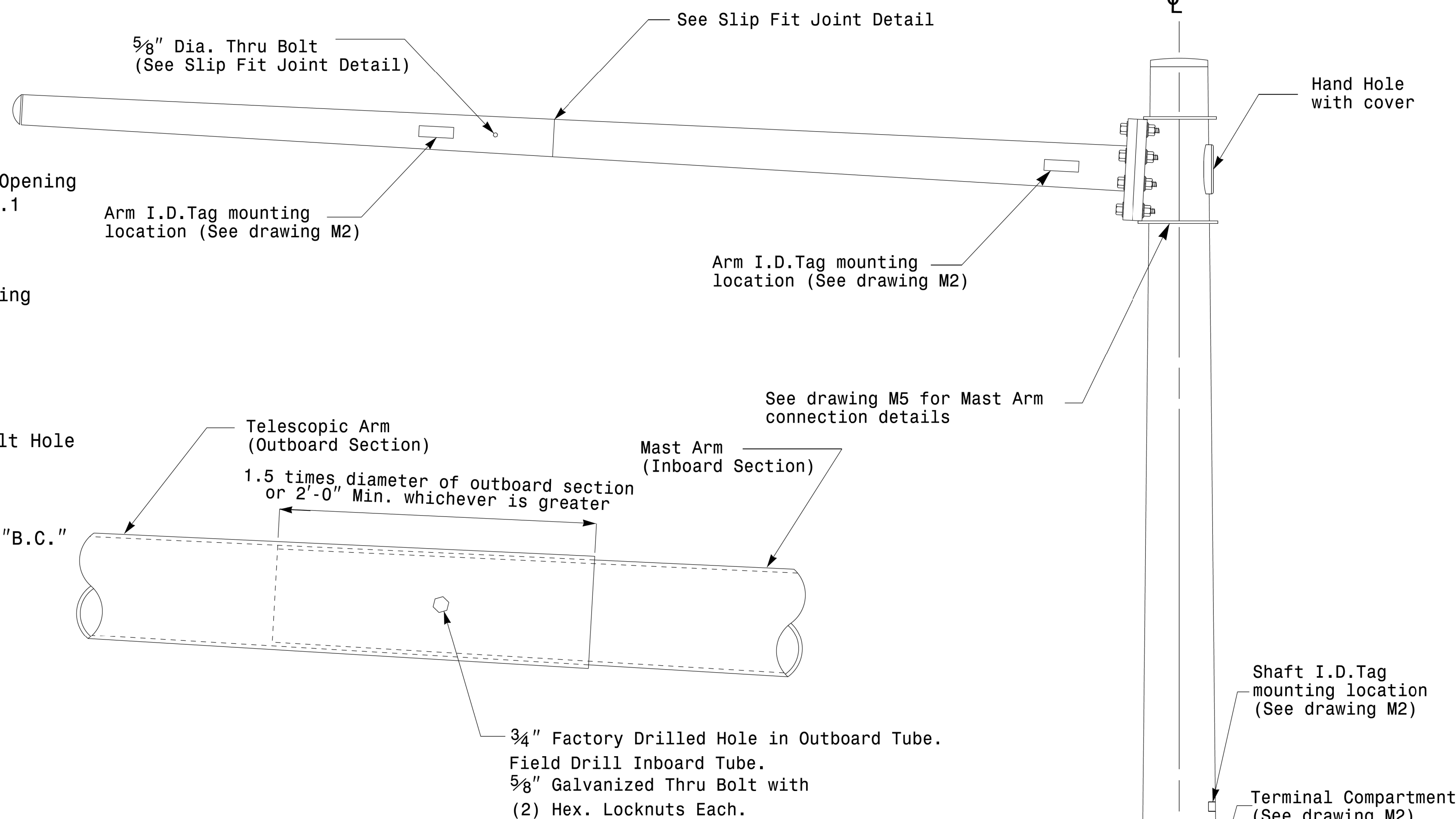
Pole Base Plate Details



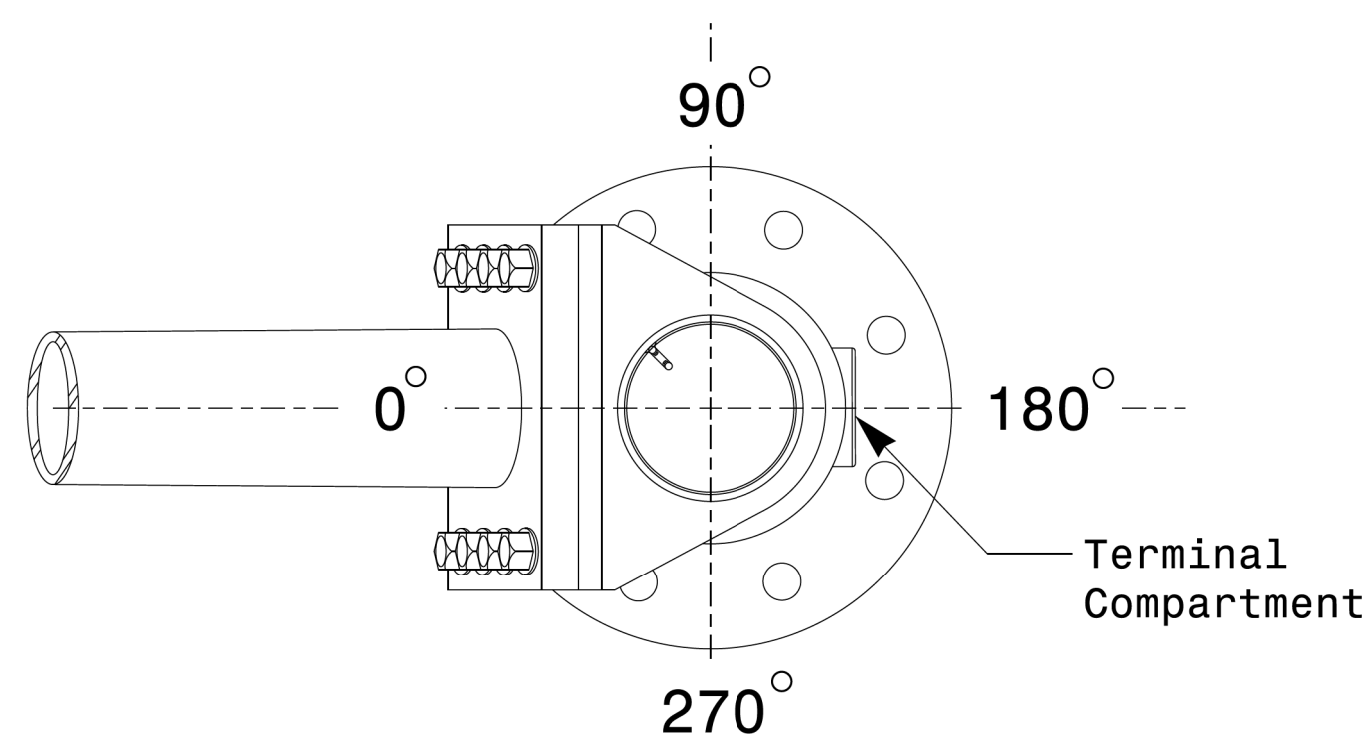
Section B-B

(Pole Attachment to Base Plate)

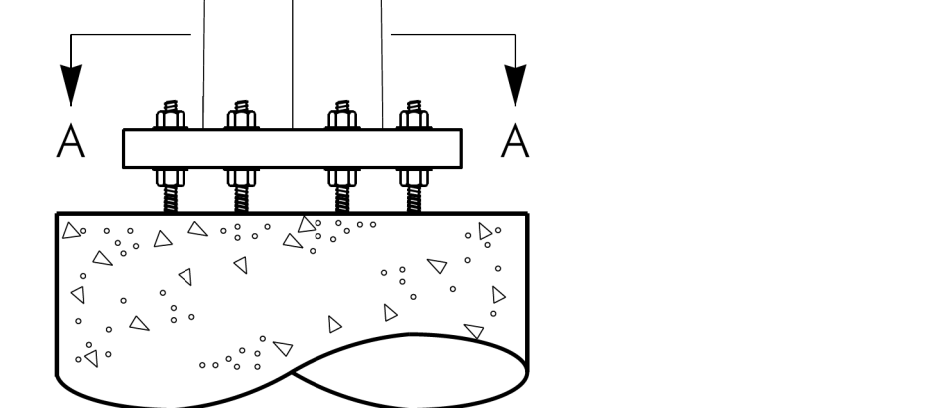
Full-Penetration Groove Weld Detail



Slip Fit Joint Detail for Mast Arm



Mast Arm Radial Orientation



Mast Arm Pole

11-10-2017 08:33  
 S:\Projects\4175 Signal\M5\Signal Design Section\Eastern Region\M5 Sheets\2016\2014 Sig.M4 Std. Fabrication Detail\Mast Arm Poles.dgn  
 rnz:masr

Prepared in the Offices of:

750 N. Greenfield Pkwy, Garner, NC 27529

SCALE: NONE

Typical Fabrication Details For Mast Arm Poles			
PLAN DATE: OCTOBER 2017	DESIGNED BY: K.C. DURIGON		
PREPARED BY: N. BITTING	REVIEWED BY: D.C. SARKAR		
REVISIONS	INIT.	DATE	

SEAL

DocuSigned by: D. C. Sarkar

10/11/2017 DATE

Fabrication Details – Mast Arm Poles