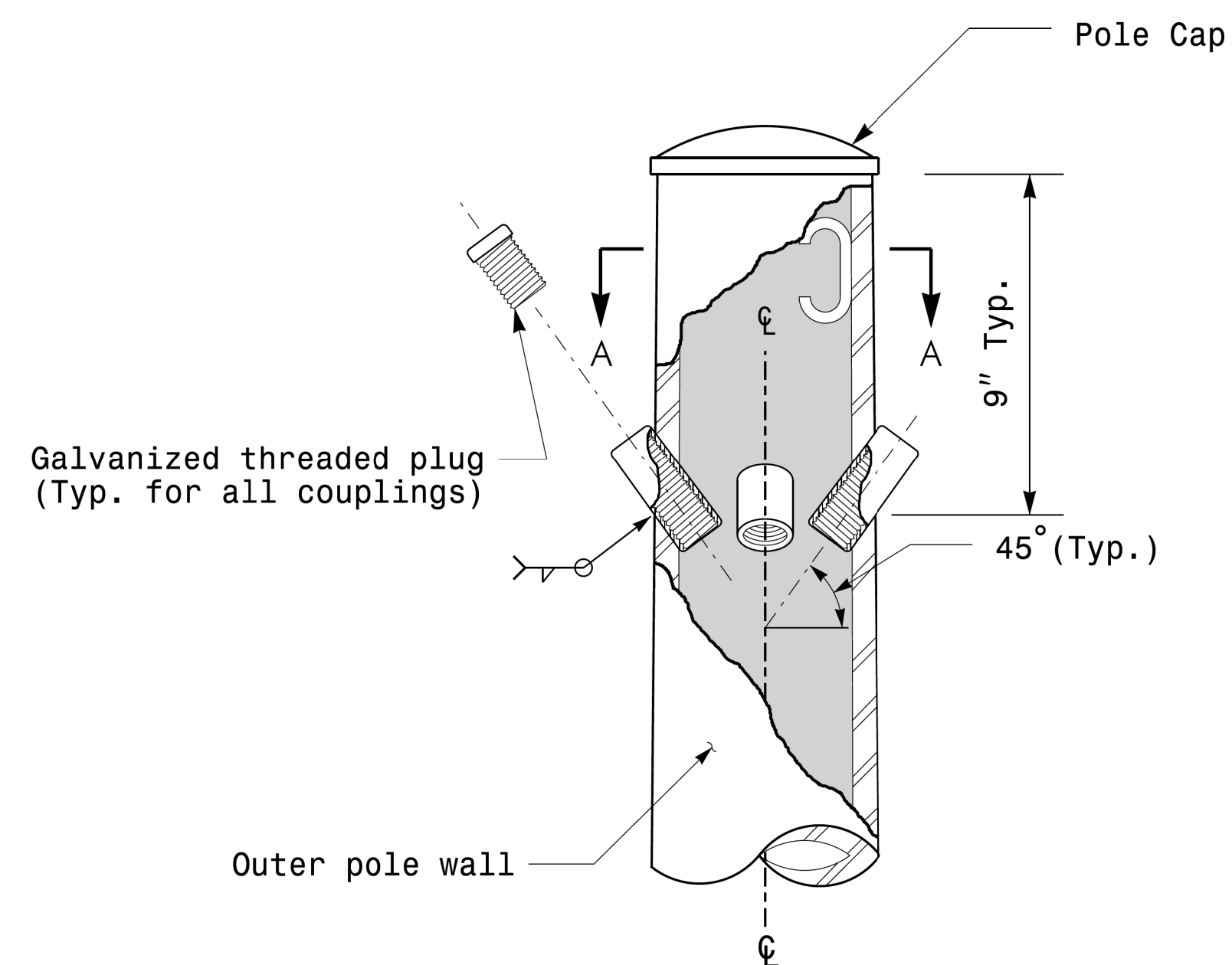
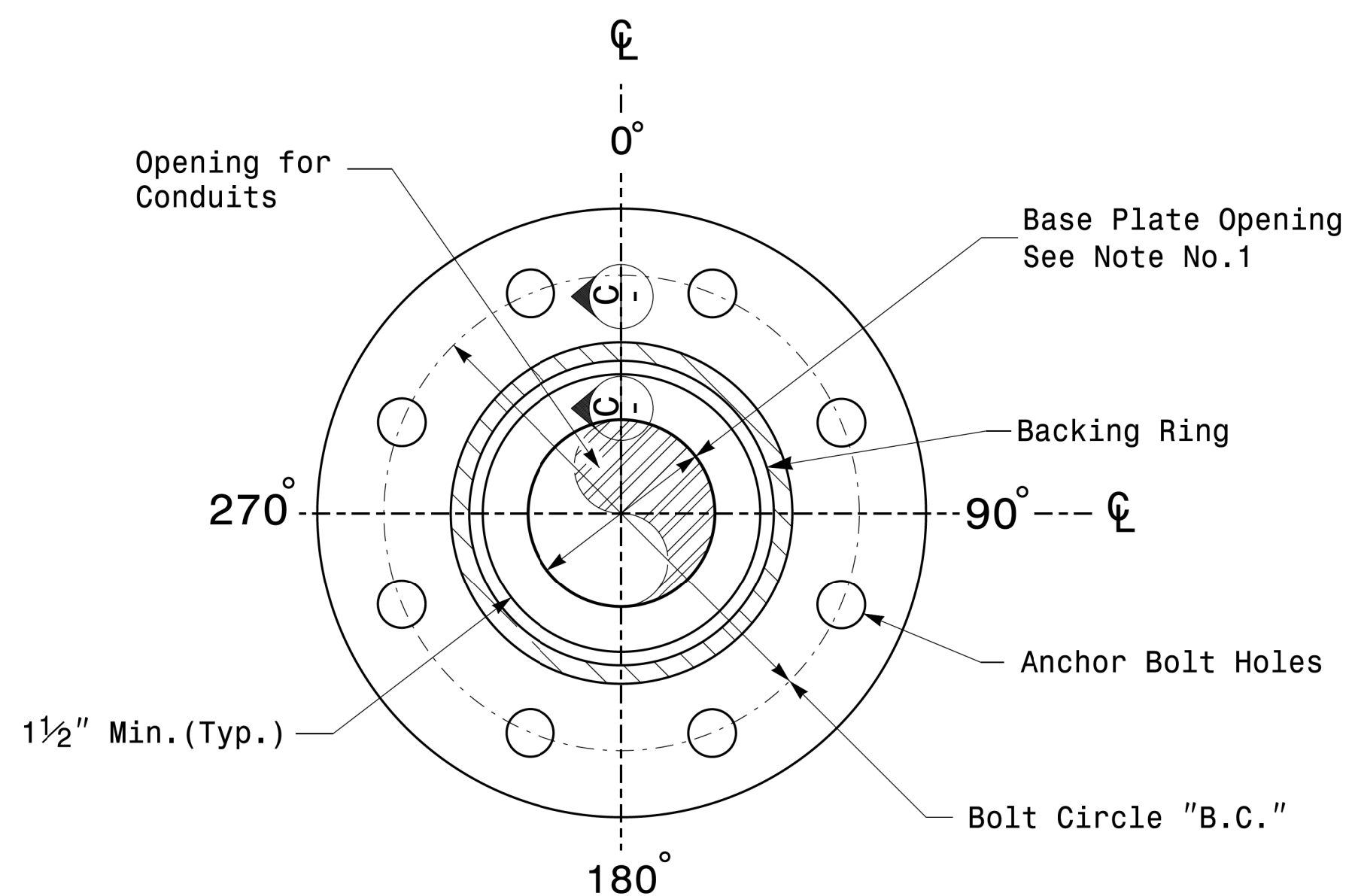


Note:
 1. Opening in pole base plate shall be equal to pole base inside diameter minus 3 1/2" but shall not be less than 8 1/2".

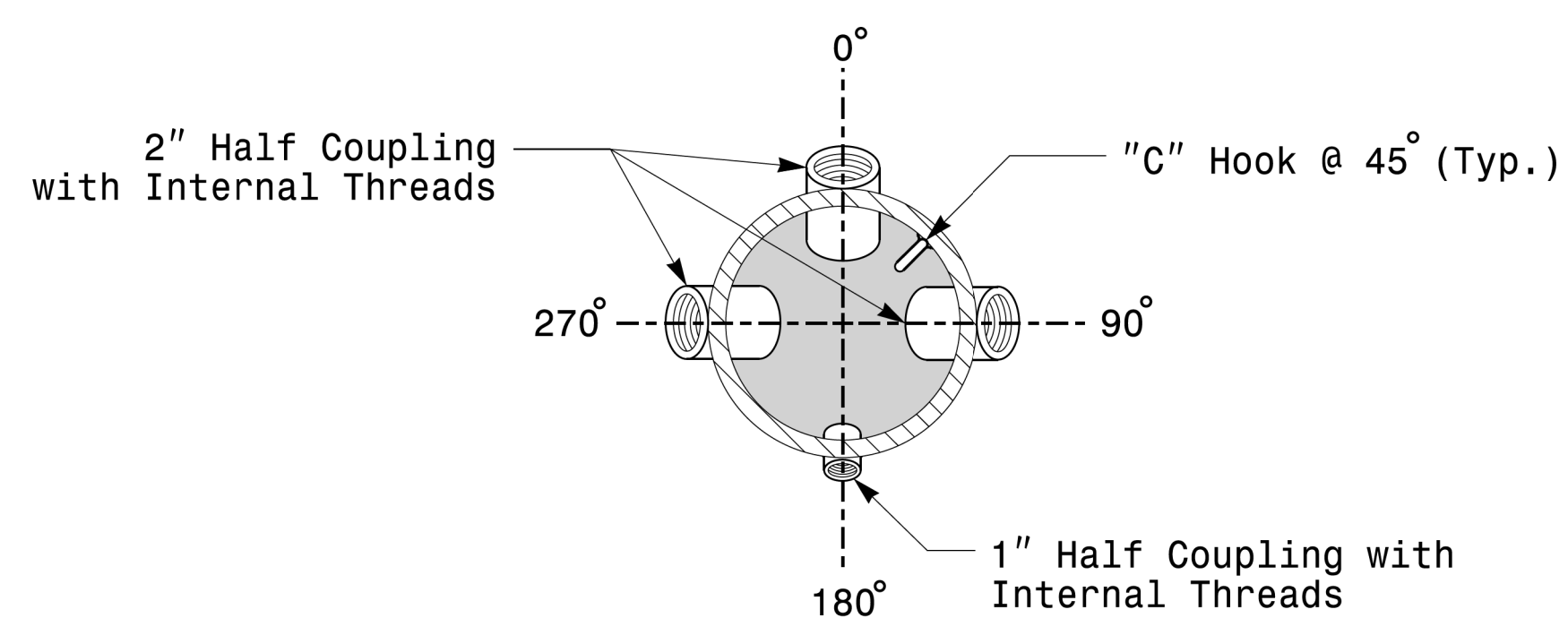


Cable Entrances at Top of Pole

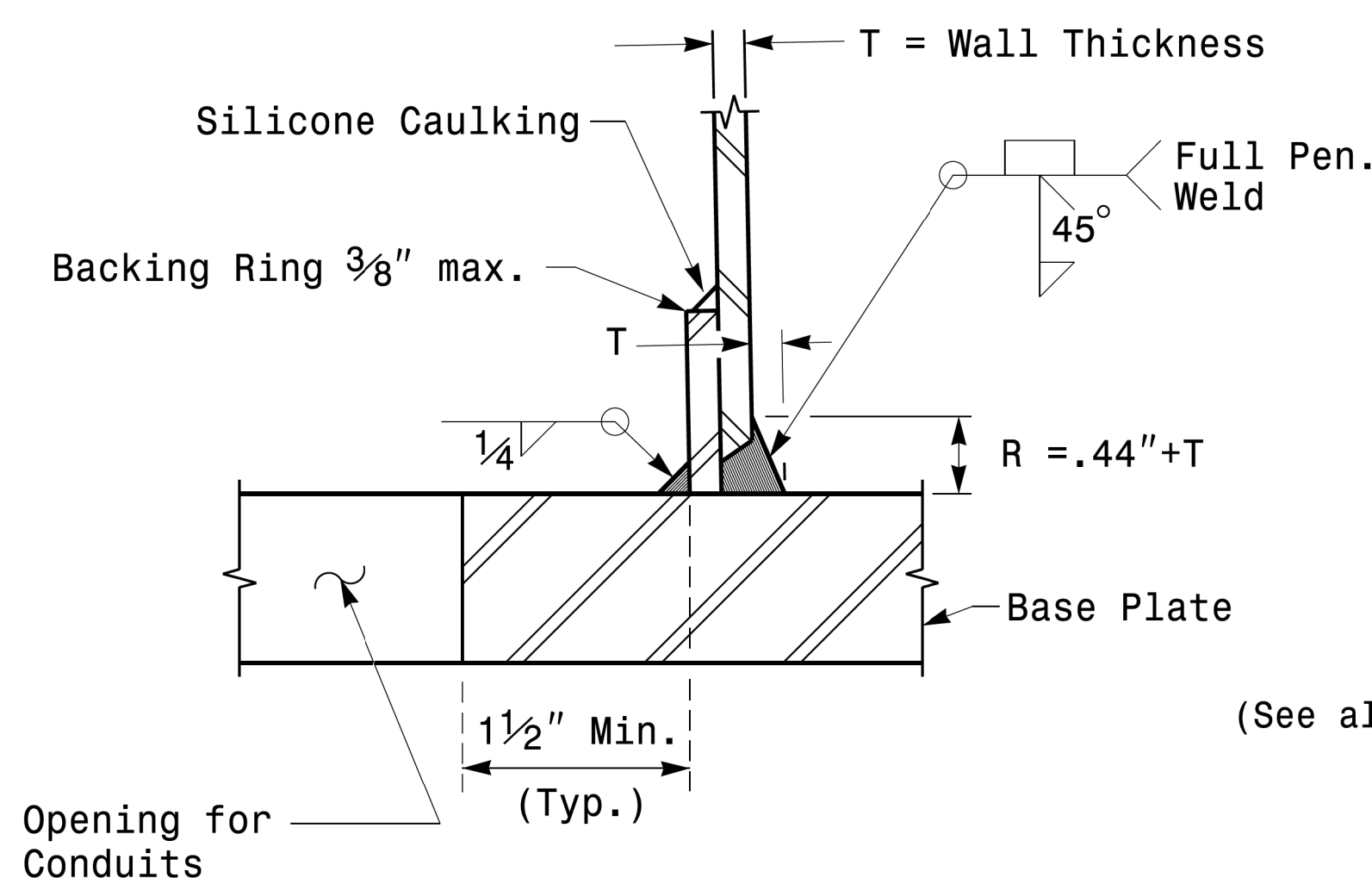


Section B-B
Pole Base Plate Details
(8 and 12 Bolt Pattern)

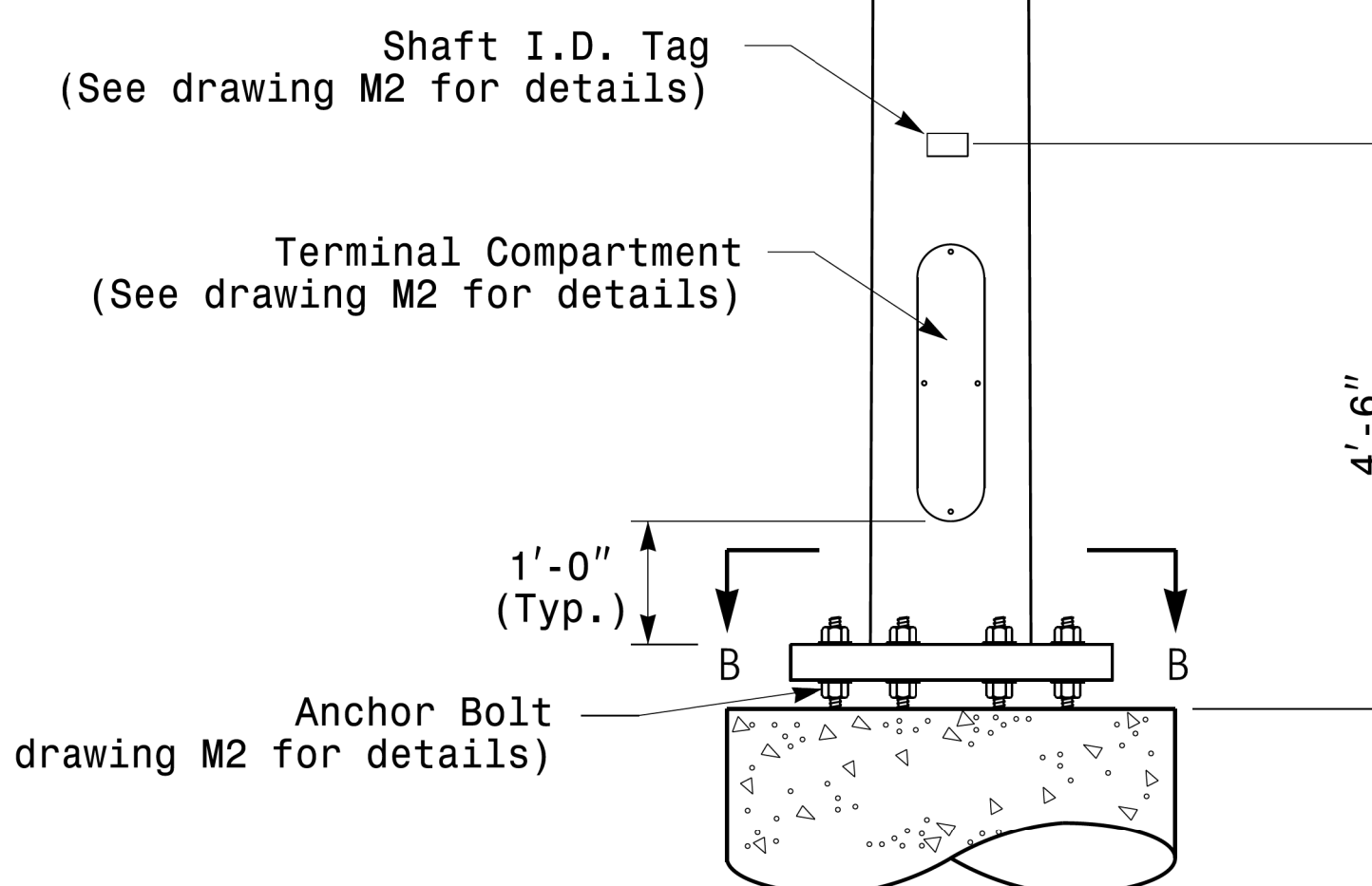
2 Cable Clamps designed for variable attachment heights from 1'-6" to 5'-0" below the top of the pole.



Section A-A
Radial Orientation for Factory Installed
Accessories at Top of Pole



Section C-C
(Pole Attachment to Base Plate)
Full-Penetration
Groove Weld Detail



Monotube Strain Pole

11-01-2017 08:25
 S:\Projects\1715 Signal\Signal Design Section\Eastern Region\MM Sheets\2016\2014 Sig.M3 Std. Fabrication Detail for Strain Poles.dgn
 rnz:maser

Prepared In the Offices of:

 750 N. Greenfield Pkwy, Garner, NC 27529

Typical Fabrication Details For Strain Poles			
PLAN DATE:	OCTOBER 2017	DESIGNED BY:	K.C. DURIGON
PREPARED BY:	N. BITTING	REVIEWED BY:	D.C. SARKAR
REVISIONS		INIT.	DATE

SEAL

 Decided by: Debesh C. Sarkar
 DATE: 10/11/2017

Fabrication Details – Strain Poles