

Note: Unless otherwise specified, locate Terminal Compartment 1 foot above the pole base plate at 180 degrees on the pole's radial index.

**Terminal Compartment Detail**

MFG _____	MFG. DATE: MM/YY _____
SHAFT D/T/L/Y _____	
ARM-A D/T/L/Y _____	
ARM-B D/T/L/Y _____	
A.B. DIA./B.C./L/Y _____	
NCDOT SIG. INV. NO. _____	
NCDOT POLE NO. _____	

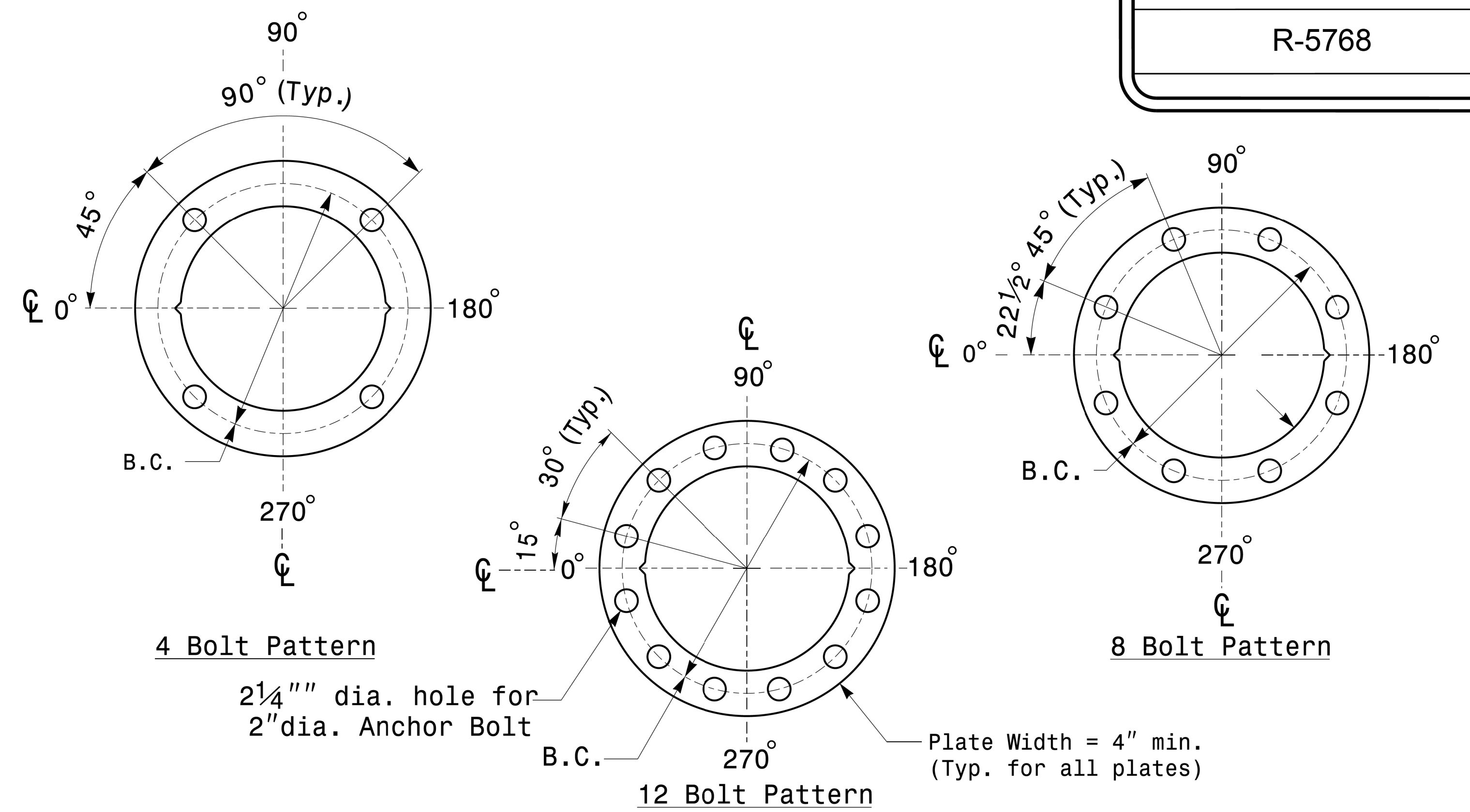
Shaft I.D. Tag  
(Provide on Shaft of Strain Poles and Mast Arm Poles Shaft)

- Notes:
- 1) D= Diameter, T= Thickness, L= Length, Y= Yield Strength
  - 2) A.B. = Anchor Bolt
  - 3) B.C. = Bolt Circle of Anchor Bolts
  - 4) If Custom Design, use "NCDOT STANDARD" line for Signal Inv. Number and pole I.D. number
  - 5) See drawing M3 and M4 for mounting positions of I.D. tags.

**Identification Tag Details**

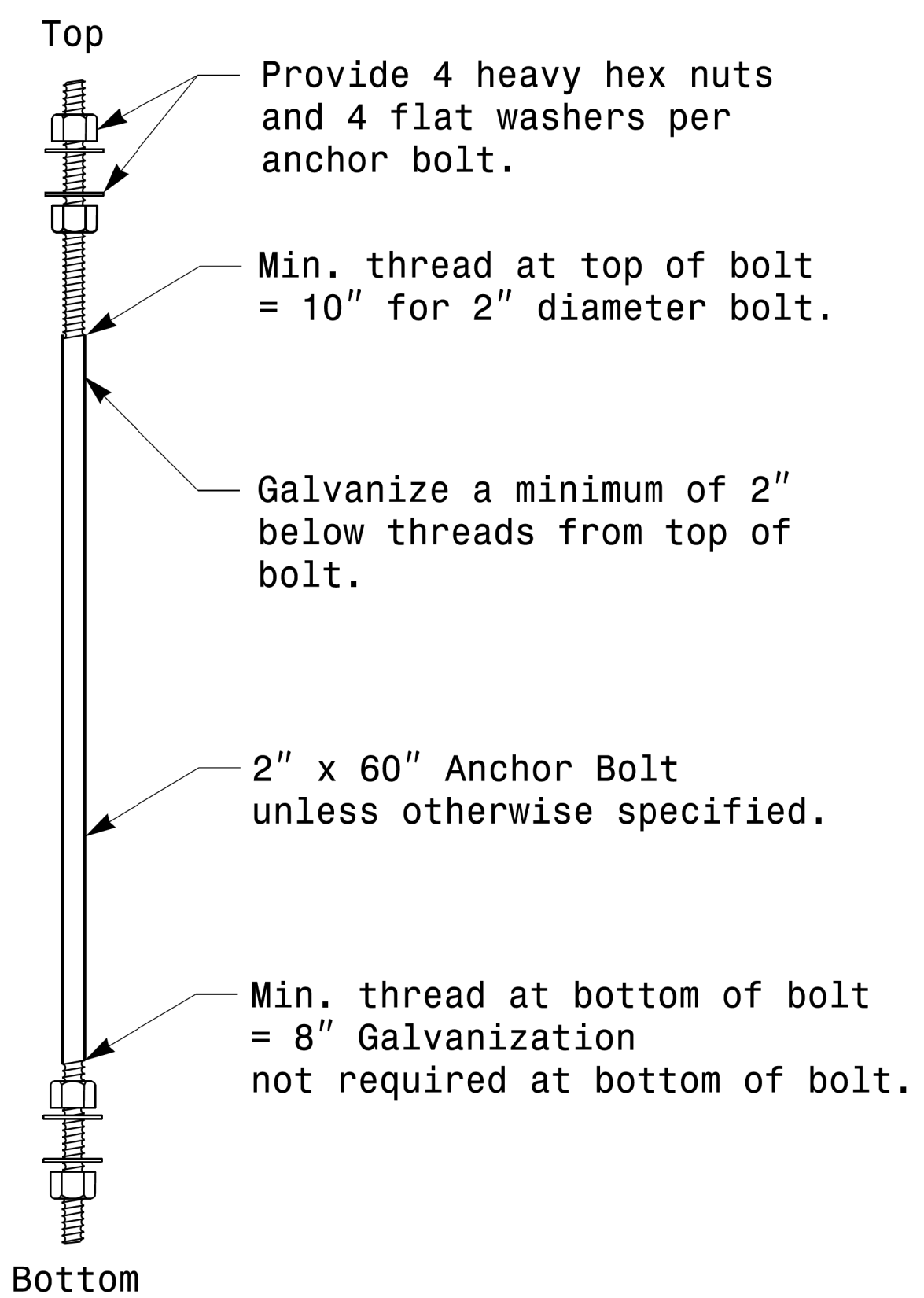
MFG _____	MFG. DATE: MM/YY _____
SECTION D/T/L/Y _____	
NCDOT SIG. INV. NO. _____	
NCDOT POLE NO. _____	

Arm I.D. Tag  
(Provide on each section of a multi-section mast arm.)

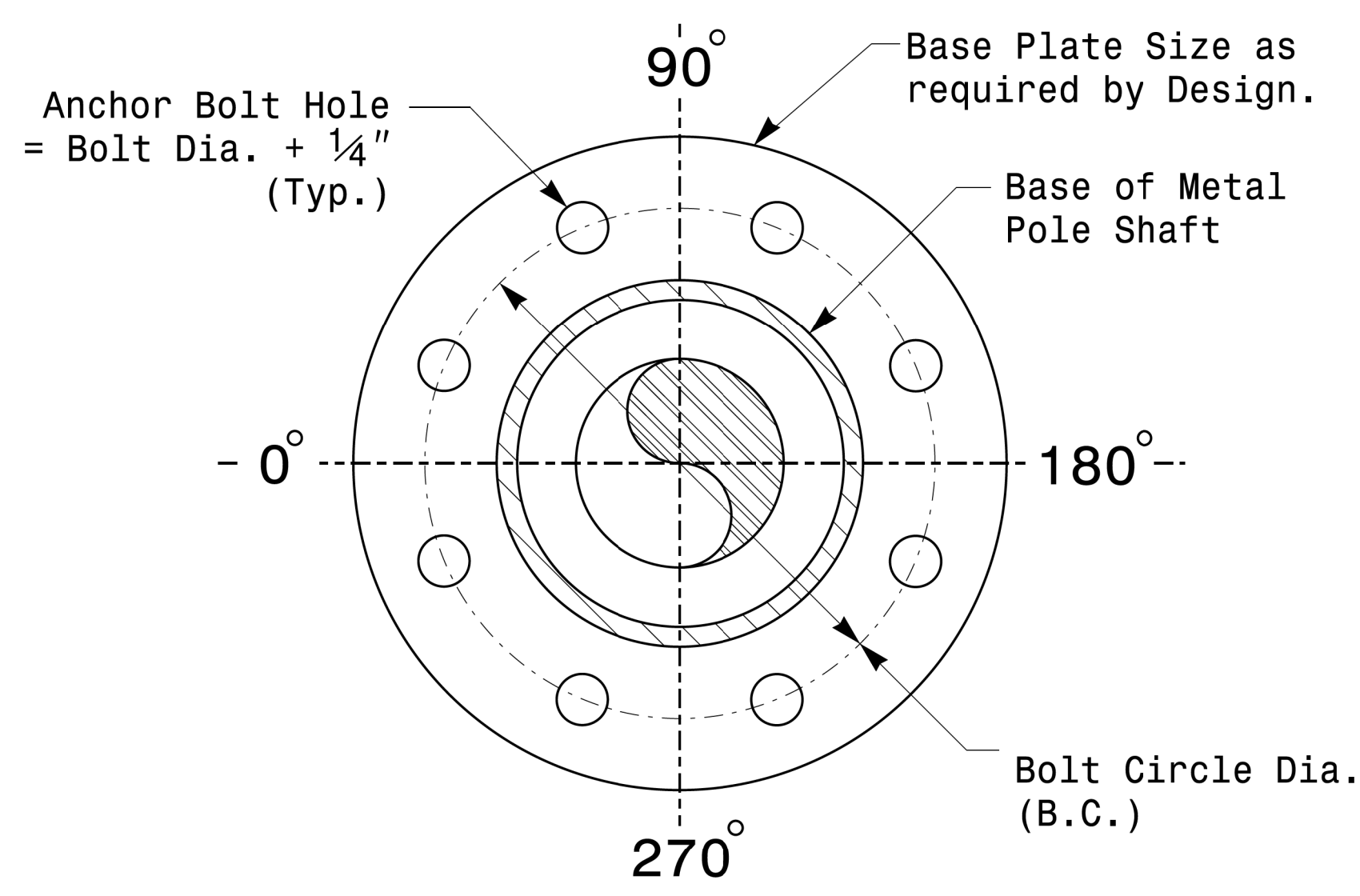


Construct Templates and Plates from 1/4 inch min. thick Steel. Galvanizing is not required.

**Base Plate Template and Anchor Bolt Lock Plate Details**



**Anchor Bolt Detail**



**Typical Base Plate Detail**

	<p>Typical Fabrication Details For All Metal Poles</p>		
	<p>PLAN DATE: OCTOBER 2017</p>	<p>DESIGNED BY: C.F. ANDREWS</p>	
<p>PREPARED BY: N. BITTING</p>	<p>REVIEWED BY: D.C. SARKAR</p>	<p>INIT. DATE</p>	<p>SCALE: NONE</p>
<p>Signature: Debesh C. Sarkar</p>			<p>10/11/2017 DATE</p>

11-10-2017 08:30  
 S:\Projects\175 Signal\Signal Design\Section\Eastern Region\MM Sheets\2016\2014 Sig.M2 Std. Fabrication Detail\16-A11 Poles.dgn  
 rnz:hsar

**Fabrication Details – All Metal Poles**