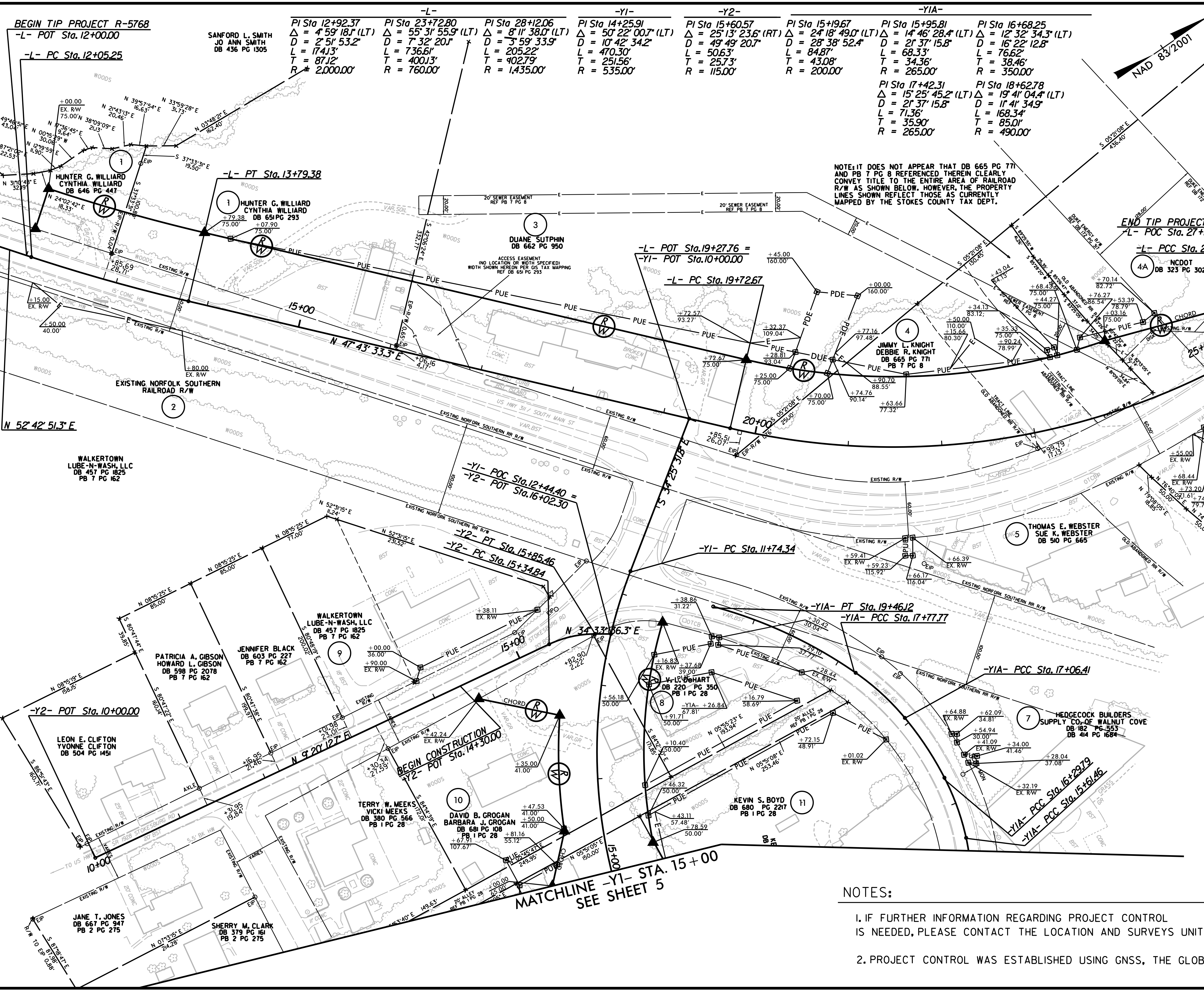


6/2/19
13 MAY 2019 10:51:00 903011.RW SHEETS:R-5768-1.s-rw04.dgn
OWNER: STONE ISLAND



PROJECT REFERENCE NO.	SHEET NO.
R-5768	RW04
Location and Surveys	
ALLIED ASSOCIATES, P.A.	

-L-	-Y1-	-Y2-	-Y1A-
PI Sta 12+92.37 Δ = 4° 59' 18" (LT) D = 2' 51' 53.2" L = 1741.3' T = 871.2' R = 2,000.00'	PI Sta 14+25.91 Δ = 50° 22' 00.7" (LT) D = 10' 42' 34.2" L = 470.30' T = 251.56' R = 535.00'	PI Sta 15+60.57 Δ = 25° 13' 23.6" (RT) D = 49' 49' 20.7" L = 506.3' T = 257.3' R = 115.00'	PI Sta 15+95.81 Δ = 14° 46' 28.4" (LT) D = 21' 37' 15.8" L = 68.33' T = 34.36' R = 265.00'
PI Sta 23+72.80 Δ = 55° 31' 55.9" (LT) D = 7' 32' 20.1" L = 736.61' T = 400.13' R = 760.00'	PI Sta 28+12.06 Δ = 8° 11' 38.0" (LT) D = 3' 59' 33.9" L = 205.22' T = 90.279' R = 1,435.00'	PI Sta 15+19.67 Δ = 24° 18' 49.0" (LT) D = 28' 38' 52.4" L = 84.87' T = 43.08' R = 200.00'	PI Sta 16+68.25 Δ = 12° 32' 34.3" (LT) D = 16' 22' 12.8" L = 76.62' T = 38.46' R = 350.00'
PI Sta 17+42.31 Δ = 15° 25' 45.2" (LT) D = 21' 37' 15.8" L = 71.36' T = 35.90' R = 265.00'	PI Sta 18+62.78 Δ = 19° 41' 04.4" (LT) D = 11' 41' 34.9" L = 168.34' T = 85.01' R = 490.00'		

NOTE: IT DOES NOT APPEAR THAT DB 665 PG 771 AND PB 7 PG 8 REFERENCED THEREIN CLEARLY CONVEY TITLE TO THE ENTIRE AREA OF RAILROAD R/W AS SHOWN BELOW. HOWEVER, THE PROPERTY LINES SHOWN REFLECT THOSE AS CURRENTLY MAPPED BY THE STOKES COUNTY TAX DEPT.

END TIP PROJECT R-5768
L- POC Sta. 27+10.00
L- PCC Sta. 27+09.28

MATCHLINE -Y1- STA. 15+00
SEE SHEET 5

PROJECT SURVEYOR

DocuSigned by:
Clinton Osborne
0A6F6085F5440B

SEAL
L-3834
LAND SURVEYOR
CLINTON B. OSBORNE

DOCUMENT NOT CONSIDERED FINAL
UNLESS ALL SIGNATURES COMPLETED

- NOTES:
- IF FURTHER INFORMATION REGARDING PROJECT CONTROL IS NEEDED, PLEASE CONTACT THE LOCATION AND SURVEYS UNIT.
 - PROJECT CONTROL WAS ESTABLISHED USING GNSS, THE GLOBAL NAVIGATION SATELLITE SYSTEM.