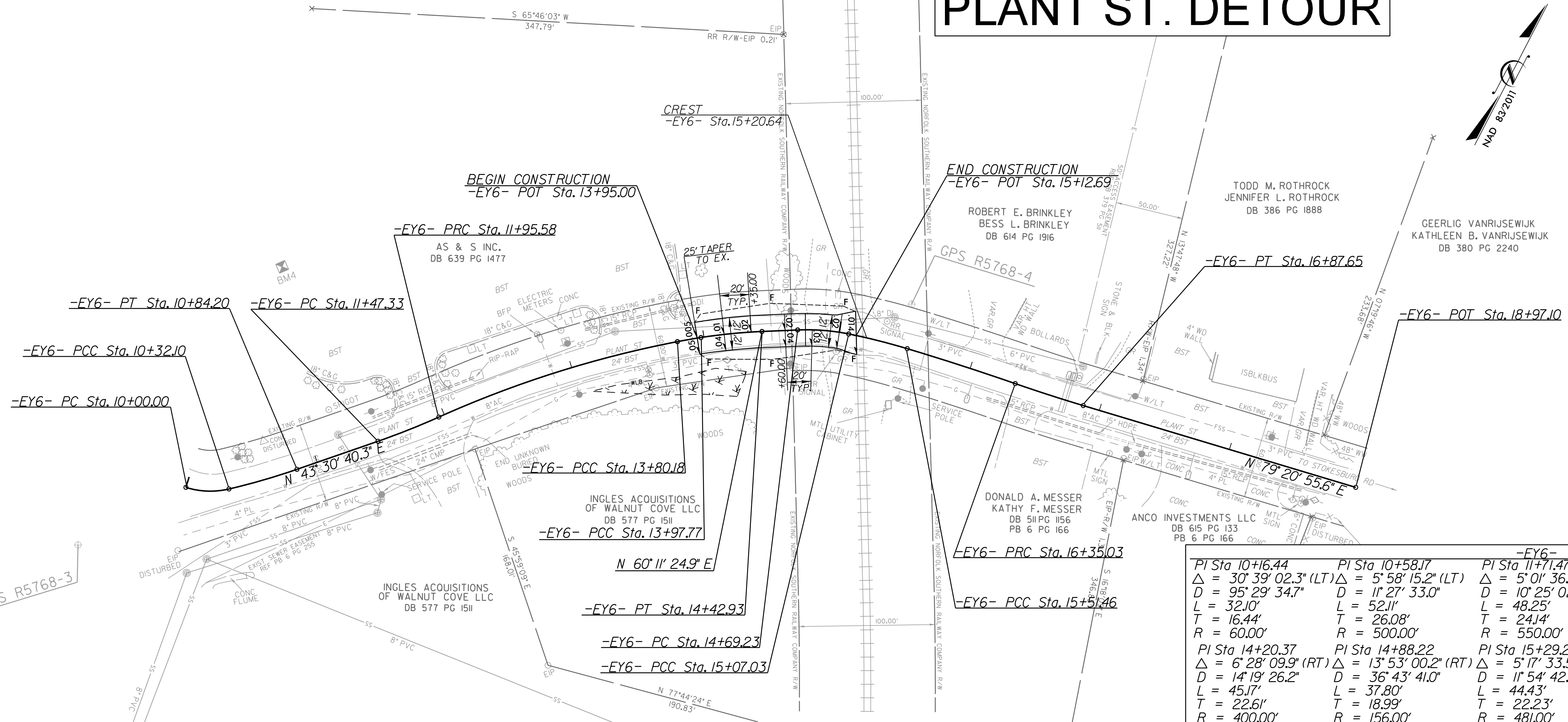


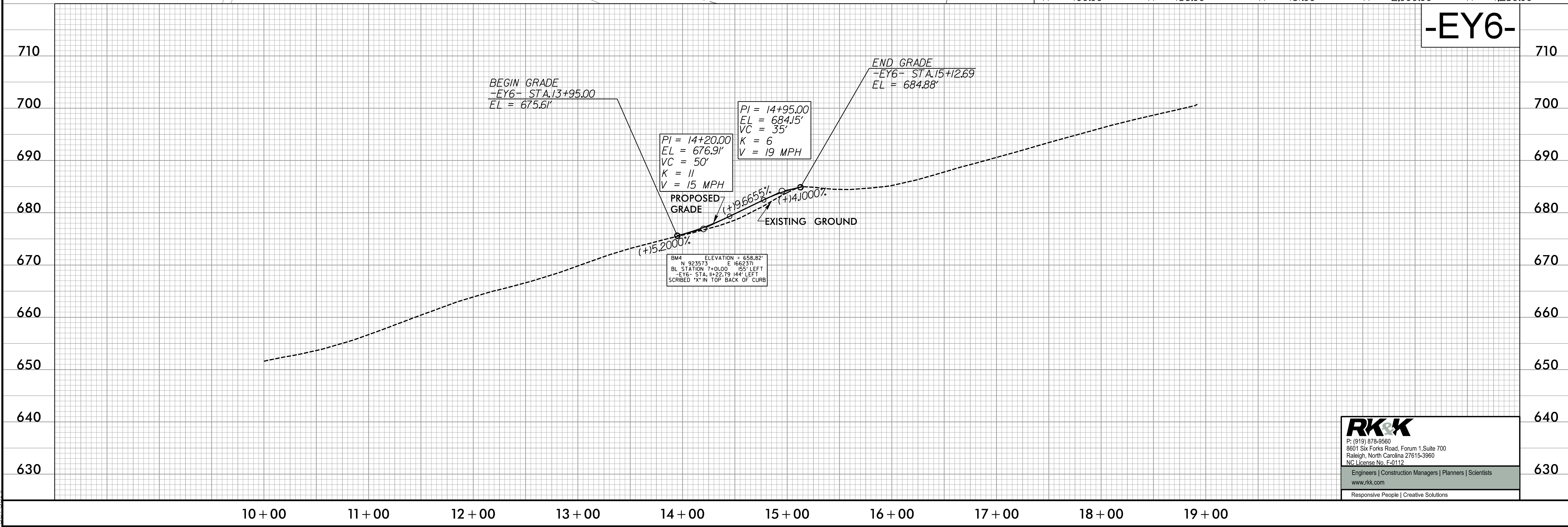
8/17/99

PLANT ST. DETOUR

PROJECT REFERENCE NO. R-5768	SHEET NO. 2B-1
RW SHEET NO.	
ROADWAY DESIGN ENGINEER	HYDRAULICS ENGINEER
DOCUMENT NOT CONSIDERED FINAL UNLESS ALL SIGNATURES COMPLETED	



-EY6-				
PI Sta 10+16.44 Δ = 30° 39' 02.3" (LT) D = 95' 29' 34.7" L = 32.10' T = 16.44' R = 60.00'	PI Sta 10+58.17 Δ = 5° 58' 15.2" (LT) D = 11' 27' 33.0" L = 52.11' T = 26.08' R = 500.00'	PI Sta 11+71.47 Δ = 5° 01' 36.7" (LT) D = 10' 25' 02.7" L = 48.25' T = 24.14' R = 550.00'	PI Sta 12+88.29 Δ = 13° 13' 14.5" (RT) D = 7° 09' 43.1" L = 184.60' T = 92.71' R = 800.00'	PI Sta 13+88.97 Δ = 2° 00' 56.9" (RT) D = 11' 27' 33.0" L = 17.59' T = 8.80' R = 500.00'
PI Sta 14+20.37 Δ = 6° 28' 09.9" (RT) D = 14' 19' 26.2" L = 45.17' T = 22.61' R = 400.00'	PI Sta 14+88.22 Δ = 13° 53' 00.2" (RT) D = 36° 43' 41.0" L = 37.80' T = 18.99' R = 156.00'	PI Sta 15+29.26 Δ = 5° 17' 33.5" (RT) D = 11' 54' 42.5" L = 44.43' T = 22.23' R = 481.00'	PI Sta 15+93.25 Δ = 2° 23' 39.1" (RT) D = 2° 51' 53.2" L = 83.57' T = 41.79' R = 2,000.00'	PI Sta 16+61.34 Δ = 2° 24' 42.1" (LT) D = 4° 35' 01.2" L = 52.62' T = 26.31' R = 1,250.00'



11/7/2022 R:\Roadway\Proj\NR-5768_Rdy_psh_02B-1.dgn

RK&K
P: (919) 878-9580
9601 Six Forks Road, Forum 1, Suite 700
Raleigh, North Carolina 27615-3960
NC License No. F-9112
Engineers | Construction Managers | Planners | Scientists
www.rkk.com
Responsive People | Creative Solutions