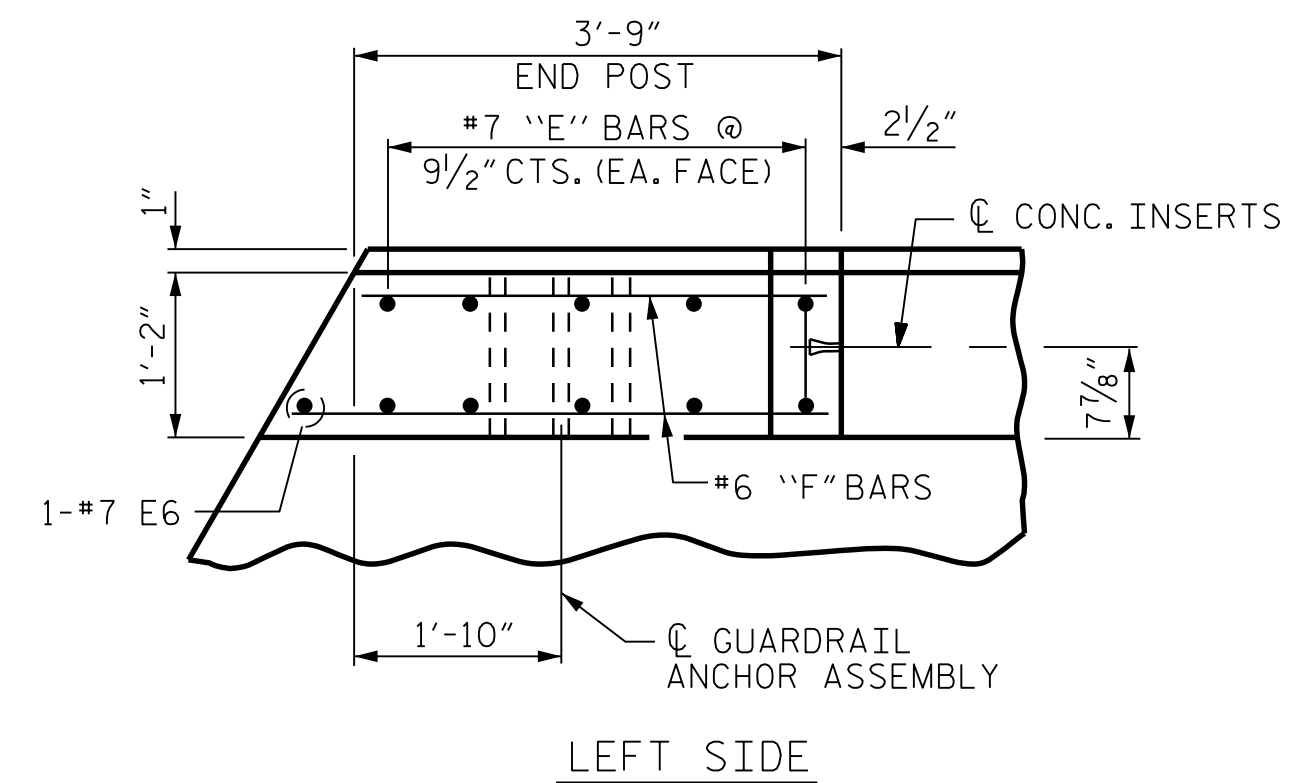
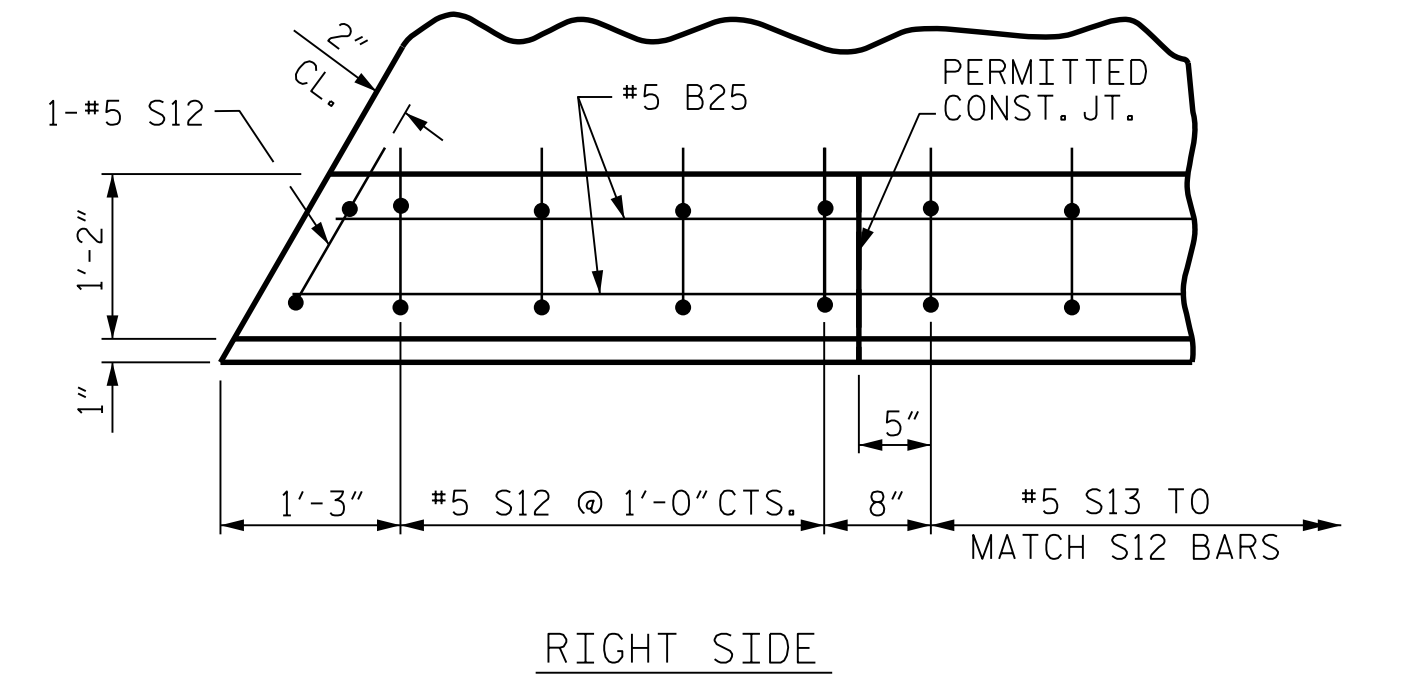


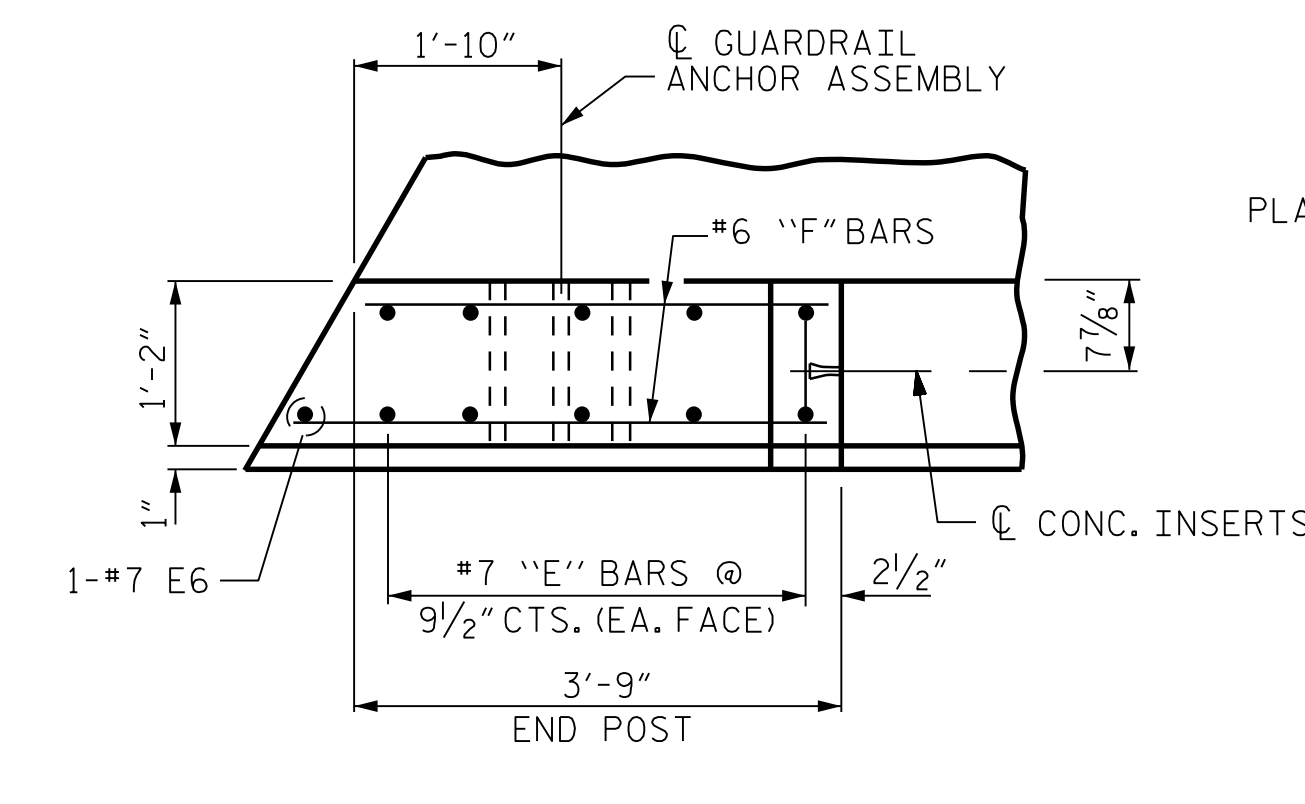
LEFT SIDE



LEFT SIDE



RIGHT SIDE

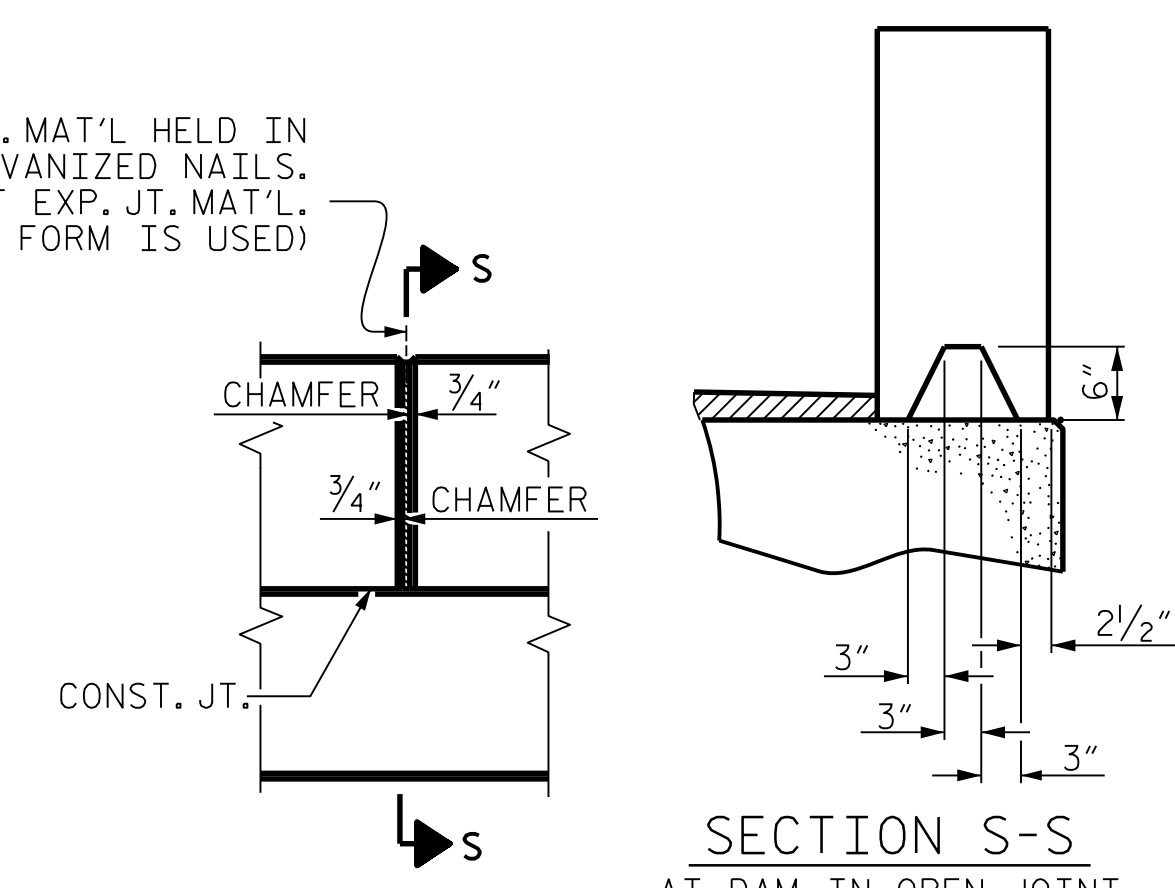


RIGHT SIDE

PLAN OF PARAPET
END BENT 1 SHOWN, END BENT 2 SIMILAR BY ROTATION

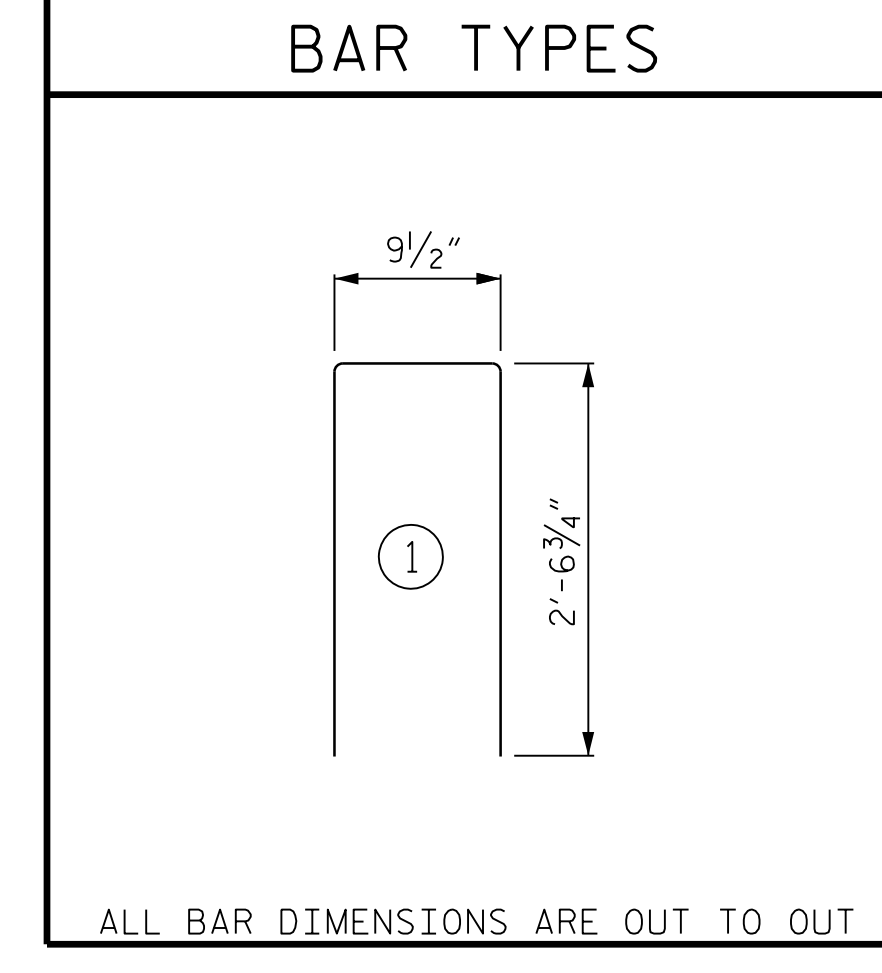
PLAN OF END POST
END BENT 1 SHOWN, END BENT 2 SIMILAR BY ROTATION

1/2" EXP. JT. MAT'L HELD IN PLACE WITH GALVANIZED NAILS. (NOTE: OMIT EXP. JT. MAT'L. WHEN SLIP FORM IS USED)



SECTION S-S
AT DAM IN OPEN JOINT (THIS IS TO BE USED ONLY WHEN SLIP FORM IS USED)

ELEVATION AT EXPANSION JOINTS



ALL BAR DIMENSIONS ARE OUT TO OUT

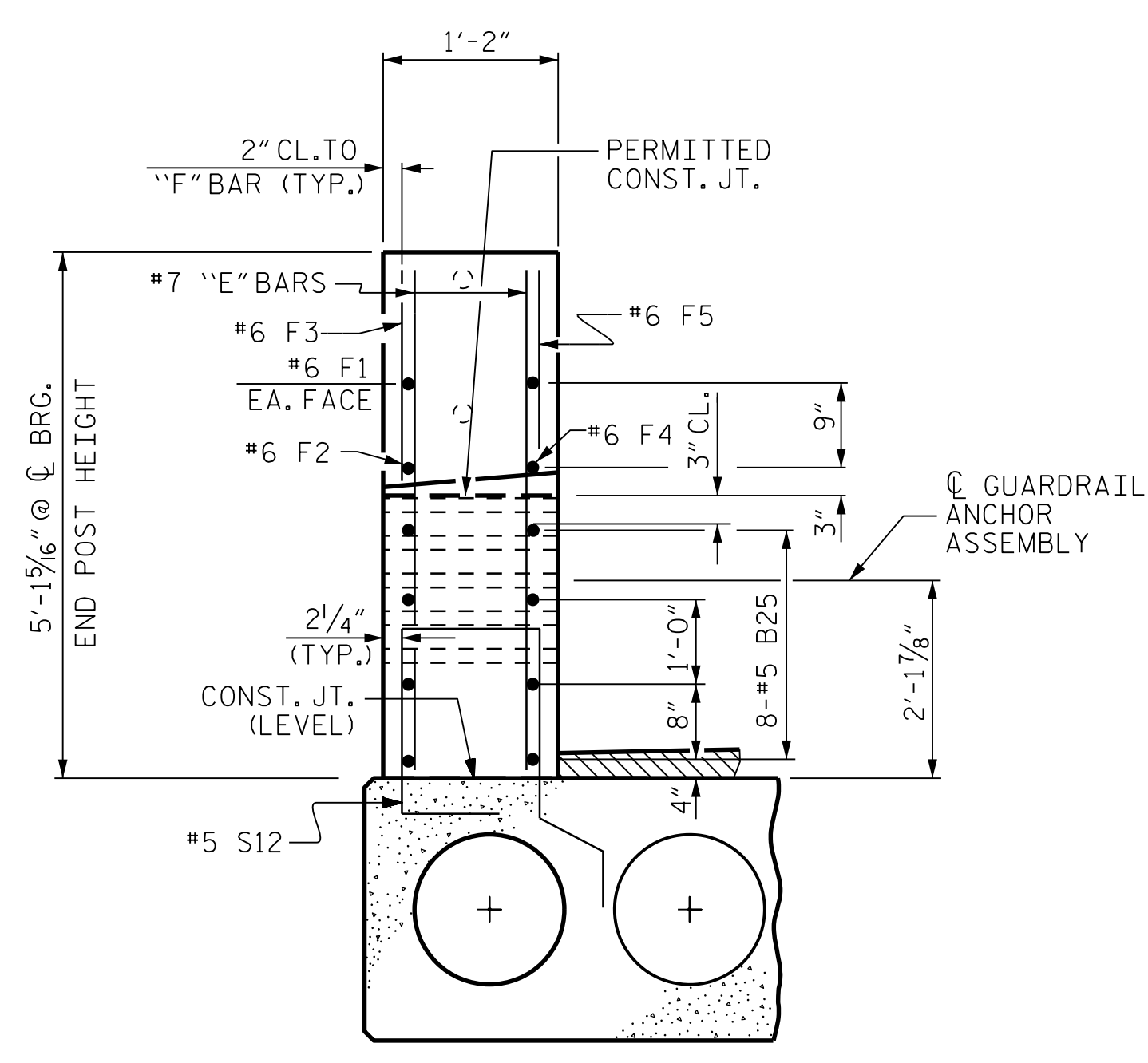
BILL OF MATERIAL					
FOR 2 PARAPETS & 4 END POSTS					
BAR	NO.	SIZE	TYPE	LENGTH	WEIGHT
* B25	96	#5	STR	13'-7"	1360
* E1	8	#7	STR	2'-9"	45
* E2	8	#7	STR	3'-3"	53
* E3	8	#7	STR	3'-9"	61
* E4	8	#7	STR	4'-3"	69
* E5	8	#7	STR	4'-8"	76
* E6	4	#7	STR	2'-5"	20
* F1	8	#6	STR	2'-0"	24
* F2	4	#6	STR	3'-5"	21
* F3	4	#6	STR	3'-9"	23
* F4	4	#6	STR	3'-3"	20
* F5	4	#6	STR	3'-7"	22
* S13	154	#5	1	5'-11"	950
* EPOXY COATED REINFORCING STEEL					LBS. 2,744
CLASS AA CONCRETE					CU.YDS. 18.60
TOTAL LIN. FT. OF CONCRETE PARAPET					140.0

THE REINFORCING STEEL AND CONCRETE IN THE END POSTS ARE INCLUDED IN THE UNIT PRICE BID FOR THE CONCRETE PARAPET.

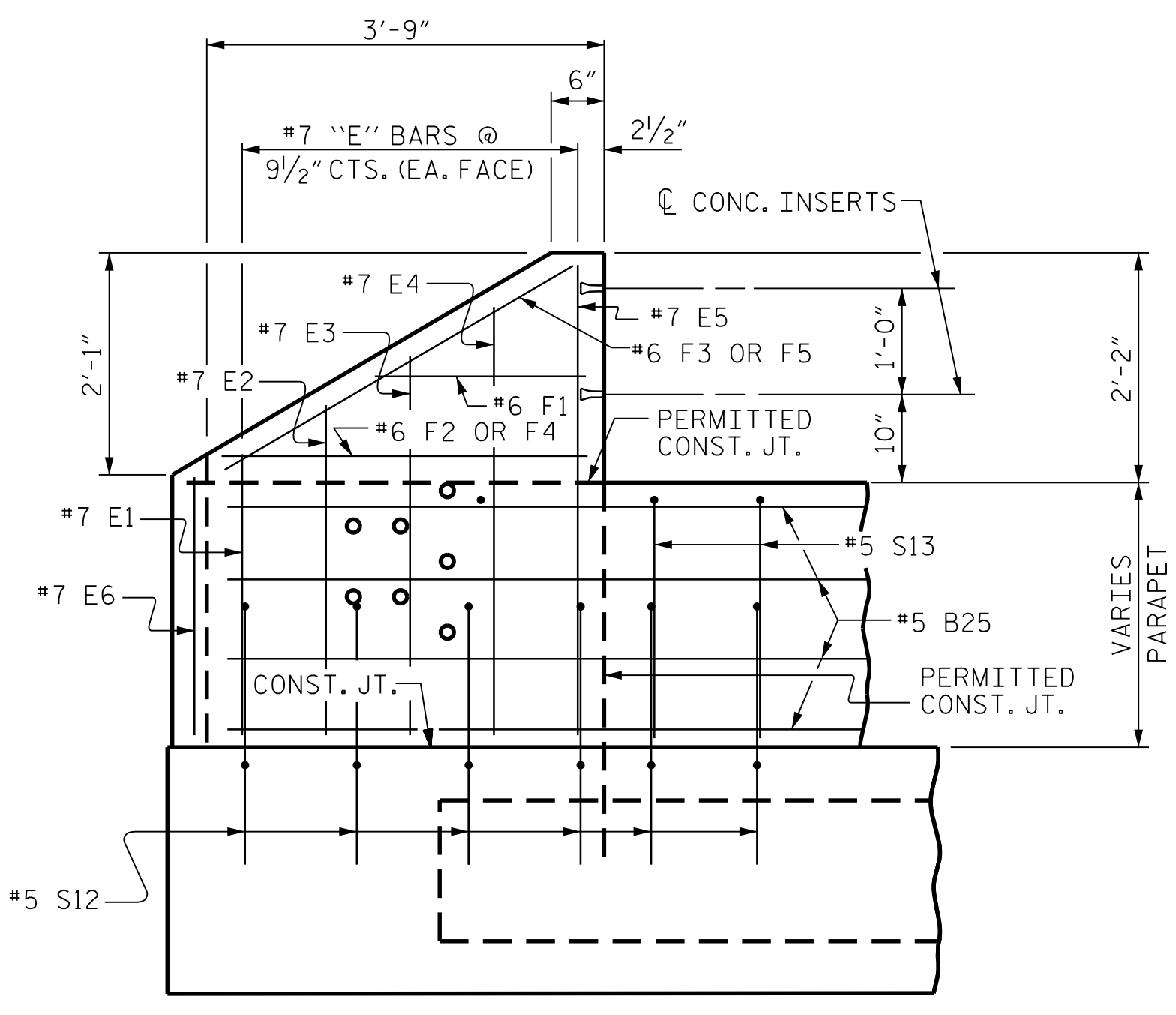
NOTES

ALL REINFORCING STEEL IN PARAPETS AND END POSTS SHALL BE EPOXY COATED.

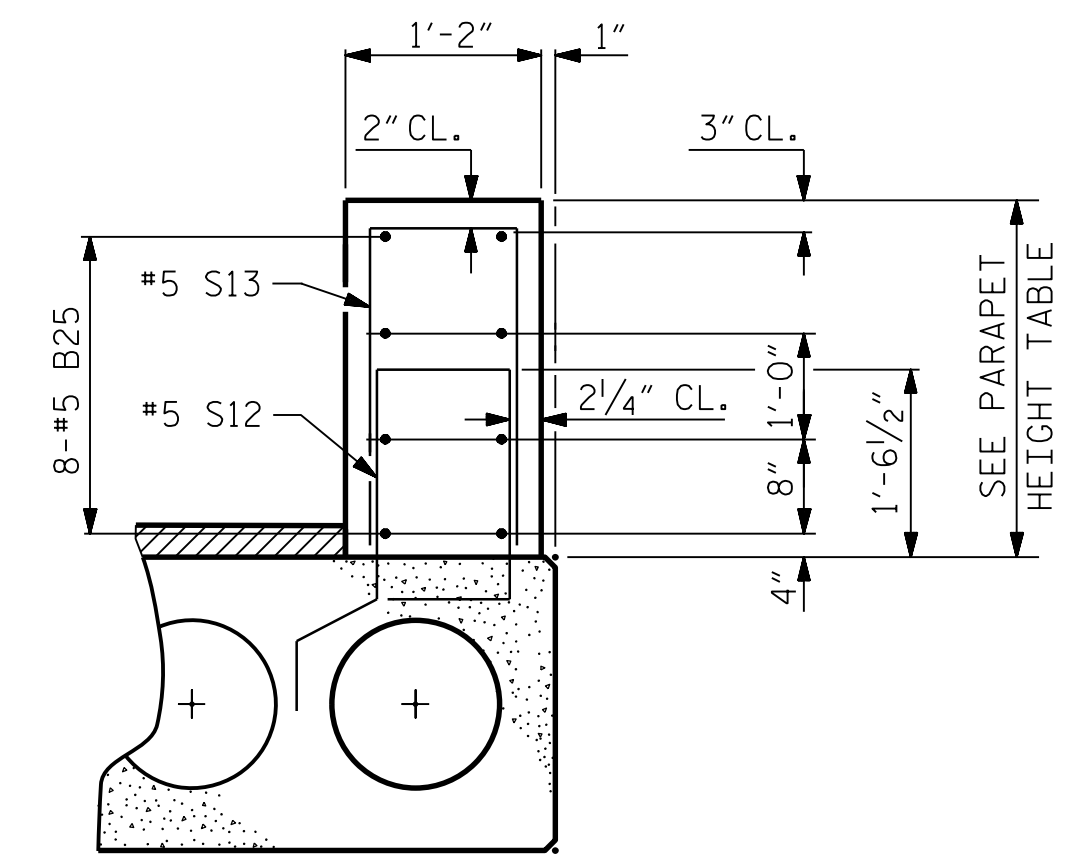
GROOVED CONTRACTION JOINTS, 1/2" IN DEPTH, SHALL BE TOOLED IN ALL EXPOSED FACES OF THE PARAPET AND IN ACCORDANCE WITH ARTICLE 825-10(B) OF THE STANDARD SPECIFICATIONS. A CONTRACTION JOINT SHALL BE LOCATED AT EACH THIRD POINT BETWEEN PARAPET EXPANSION JOINTS. ONLY ONE CONTRACTION JOINT IS REQUIRED AT MIDPOINT OF PARAPET SEGMENTS LESS THAN 20 FEET IN LENGTH AND NO CONTRACTION JOINTS ARE REQUIRED FOR THOSE SEGMENTS LESS THAN 10 FEET IN LENGTH.



END VIEW



ELEVATION



SECTION THRU PARAPET

PARAPET HEIGHT TABLE		
	AT BEARING	AT MID-SPAN
SPAN A	2'-11 5/16"	2'-9 3/16"

CONCRETE PARAPET DETAILS

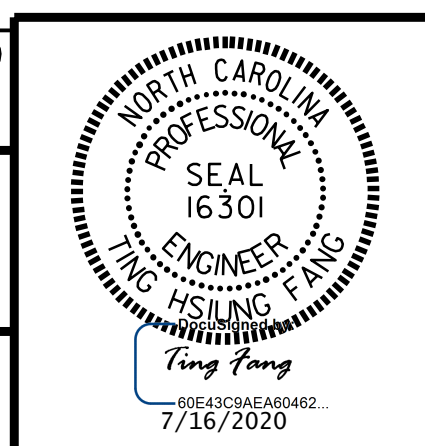
FOR PLAN VIEW OF CONCRETE PARAPET, SEE "PLAN OF SPAN" SHEET

DOCUMENT NOT CONSIDERED FINAL UNLESS ALL SIGNATURES COMPLETED

CDM Smith
 CDM SMITH
 5400 Glenwood Avenue, Suite 400
 Raleigh, NC 27612-3228
 NC COA No. F-1255

DRAWN BY: VDK DATE: 5/19
 CHECKED BY: THF DATE: 4/20
 DESIGN ENGINEER: VDK DATE: 5/20

DWG. No.



PROJECT NO. B-5644
PENDER COUNTY
 STATION: 15+55.00 -L-

REVISIONS					
NO.	BY:	DATE:	NO.	BY:	DATE:
1			3		
2			4		

SHEET NO. **S-12**
 TOTAL SHEETS **19**