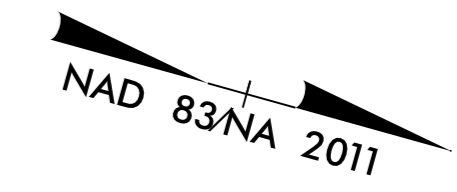
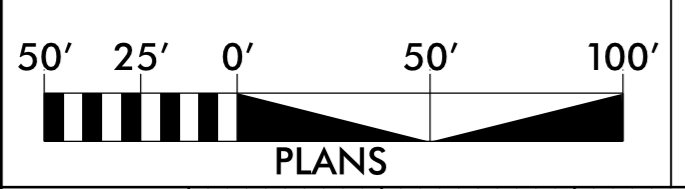
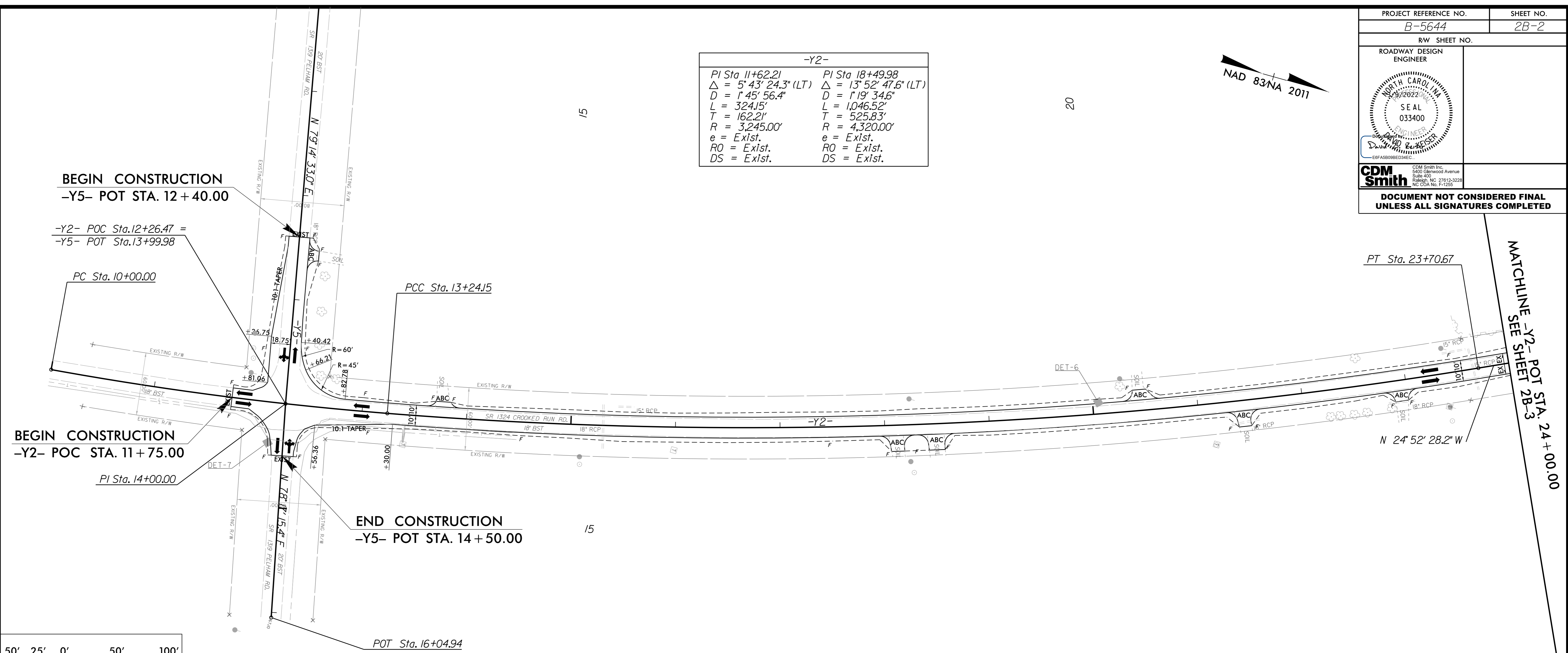


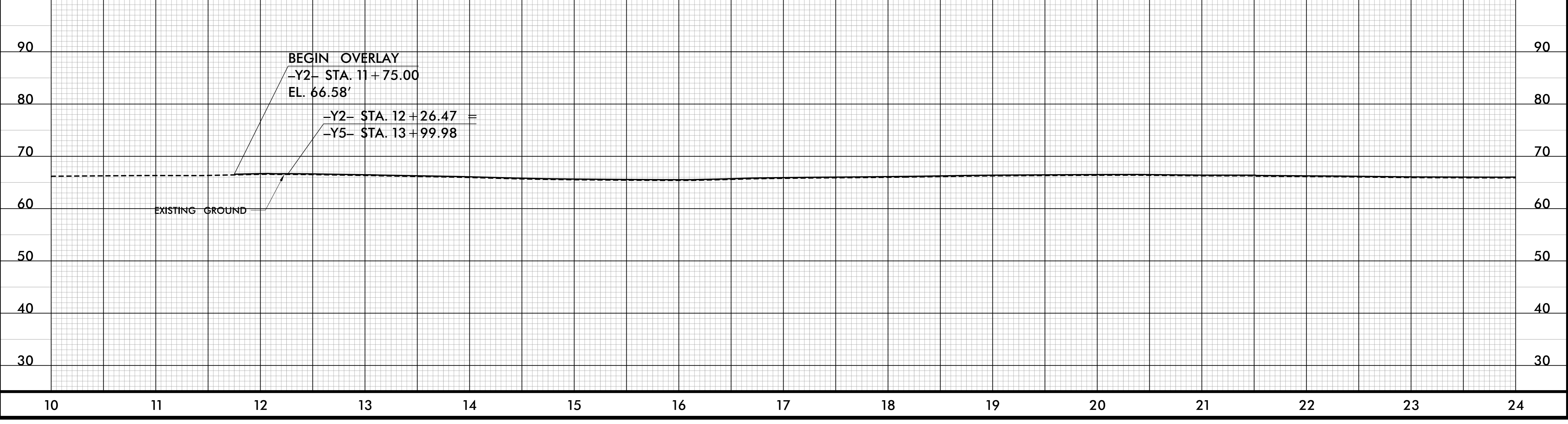
PROJECT REFERENCE NO. B-5644	SHEET NO. 2B-2
RW SHEET NO.	
ROADWAY DESIGN ENGINEER	
<small>CDM Smith Inc. 3400 Greenway Avenue Suite 400 Raleigh, NC 27612-3228 NC CDA No. P-1255</small>	
DOCUMENT NOT CONSIDERED FINAL UNLESS ALL SIGNATURES COMPLETED	



-Y2-	
PI Sta 11+62.21	PI Sta 18+49.98
$\Delta = 5^{\circ}43'24.3"$ (LT)	$\Delta = 13^{\circ}52'47.6"$ (LT)
$D = 1^{\circ}45'56.4"$	$D = 1^{\circ}19'34.6"$
$L = 324.15'$	$L = 1,046.52'$
$T = 162.21'$	$T = 525.83'$
$R = 3,245.00'$	$R = 4,320.00'$
$e = \text{Exlst.}$	$e = \text{Exlst.}$
$RO = \text{Exlst.}$	$RO = \text{Exlst.}$
$DS = \text{Exlst.}$	$DS = \text{Exlst.}$



NOTE: ALL ABC DRIVEWAY RADII EQUAL 10' UNLESS OTHERWISE NOTED.



REVISIONS

-SYSTEM: B6644_Prd1.psh_2B2.dgn
11/15/2022 10:00 AM