

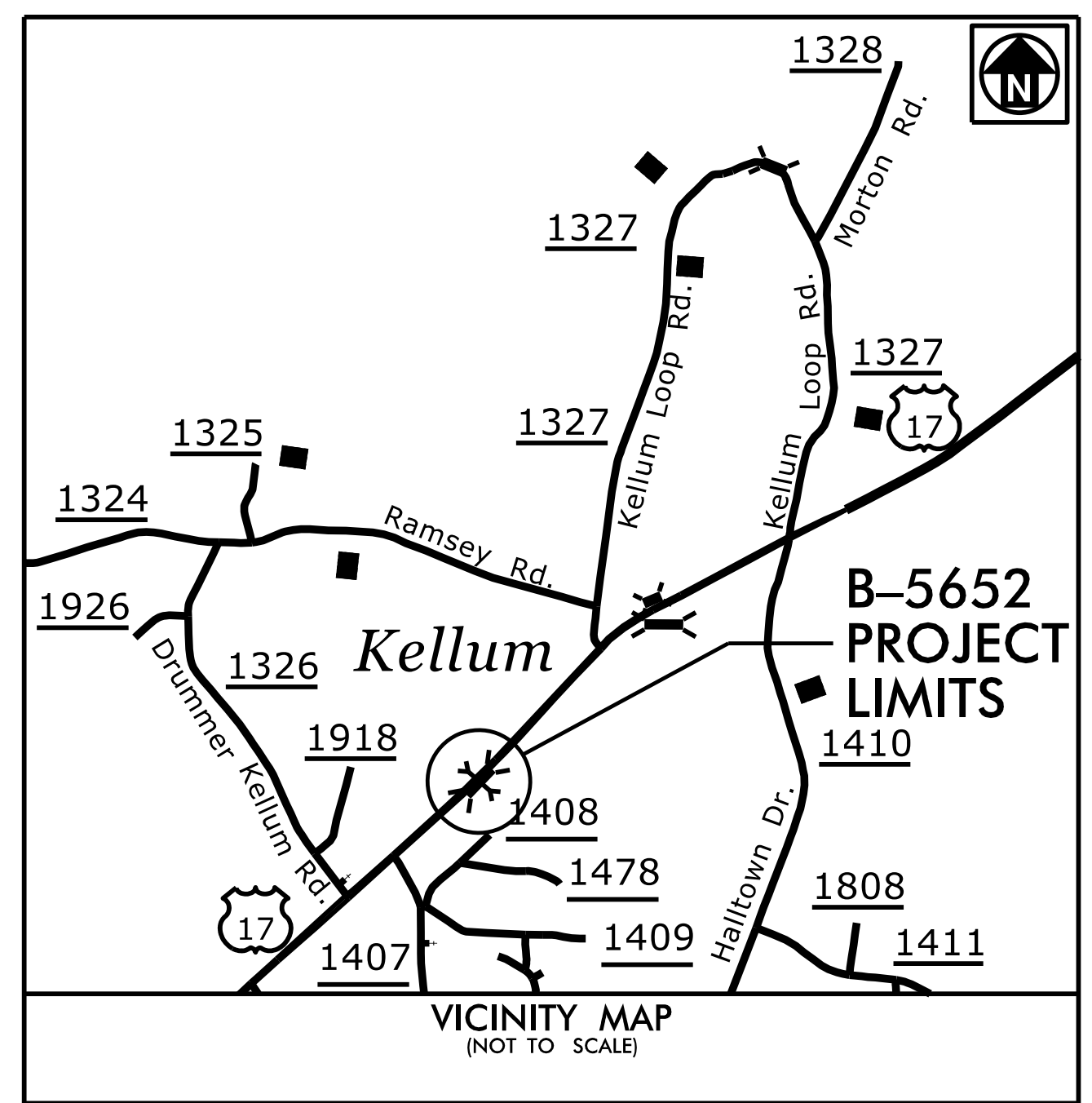
**This electronic collection of documents is provided
for the convenience of the user
and is Not a Certified Document –**

**The documents contained herein were originally issued
and sealed by the individuals whose names and license
numbers appear on each page, on the dates appearing
with their signature on that page.**

**This file or an individual page
shall not be considered a certified document.**

09.08/99

TIP PROJECT: B-5652



STATE OF NORTH CAROLINA
DIVISION OF HIGHWAYS

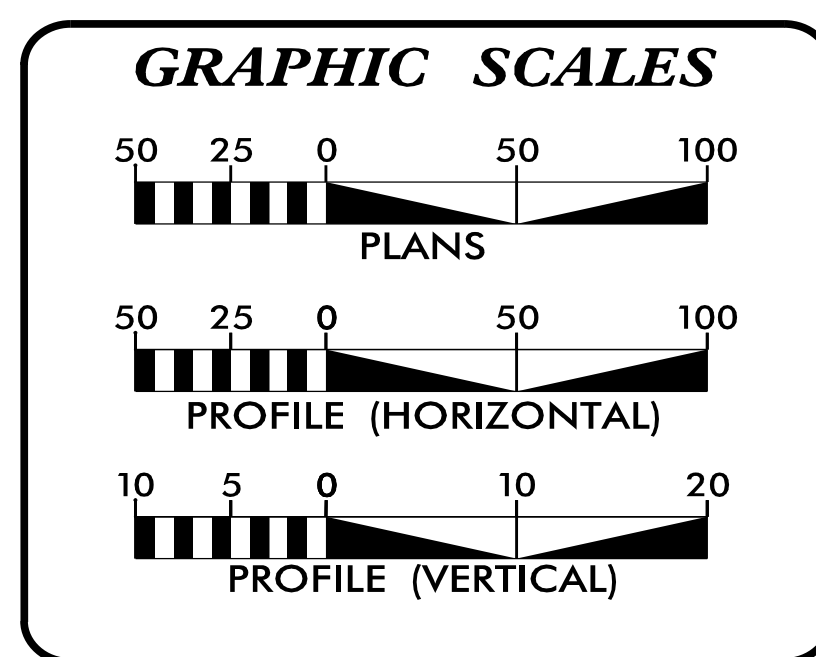
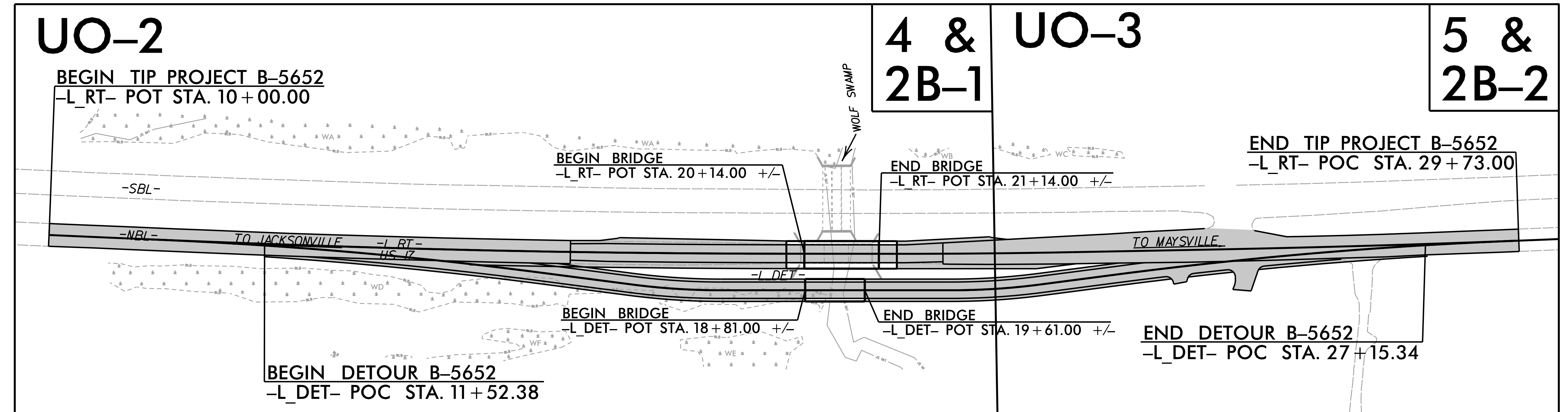
**UTILITIES BY OTHERS PLANS
ON SLOW COUNTY**

LOCATION: BRIDGE NO. 33 OVER WOLF SWAMP ON US 17

TYPE OF WORK: RELOCATION OF POWER, COMMUNICATION AND GAS

T.I.P. NO.	SHEET NO.
B-5652	UO-1

NOTE:
ALL UTILITY WORK SHOWN ON THIS SHEET WILL BE DONE BY OTHERS. NO PAYMENT WILL BE MADE TO THE CONTRACTOR FOR UTILITY WORK SHOWN ON THIS SHEET.



INDEX OF SHEETS

SHEET NO.:	DESCRIPTION:
UO-1	TITLE SHEET
UO-02 THRU UO-03	UBO PLAN SHEETS

UTILITY OWNERS WITH CONFLICTS

(A) POWER - DUKE ENERGY DISTRIBUTION
(B) GAS - PIEDMONT NATURAL GAS
(C) COMMUNICATION - CENTURYLINK

PREPARED IN THE OFFICE OF:

SAIM™
2641 Sumner Boulevard
Suite 116
Raleigh, NC 27616
(919) 878-7466

Freddie Bunn UTILITY PROJECT MANAGER
Matthew Ward PROJECT UTILITY COORDINATOR

DIVISION OF HIGHWAYS
DIVISION 3
5501 Barbados Blvd.
Castle Hayne, NC 28429

Lonny Sleeper DIVISION CONTACT #1
Derek Pielech, PE DIVISION CONTACT #2

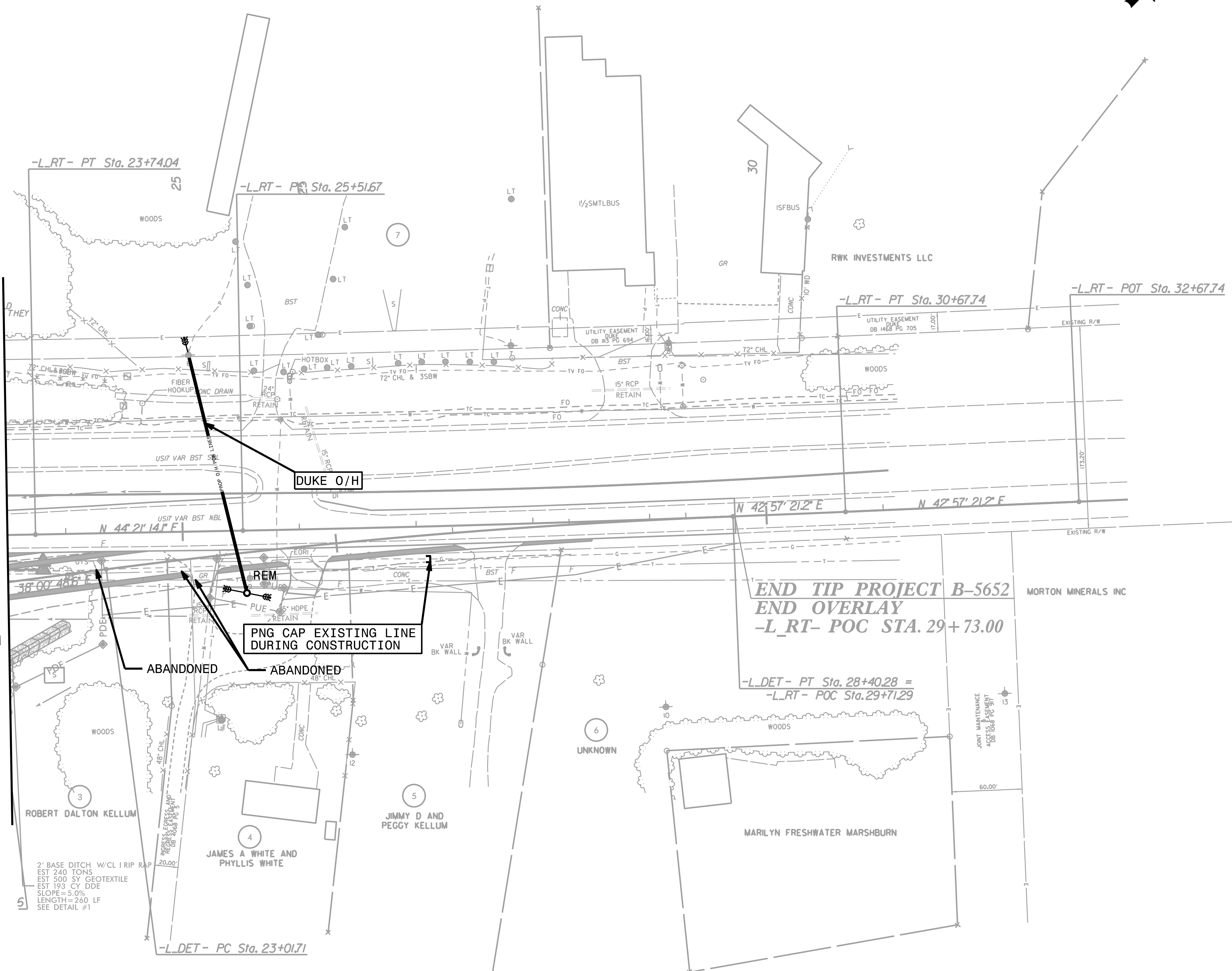
3/8/2022
\\rodwgy\proj\B5652_rdy_tsh.dgn
11:24:00 AM

UTILITIES BY OTHERS

ALL PROPOSED UTILITY WORK SHOWN ON THIS SHEET WILL BE DONE BY OTHERS. NO PAYMENT WILL BE MADE TO THE CONTRACTOR FOR PROPOSED UTILITY WORK SHOWN ON THIS SHEET.



MATCHLINE -L_RT- STA. 23 + 50.00 SEE UO-2



2' BASE DITCH W/CL 1 RIP RAP
EST 240 TONS
EST 500 SY GEOTEXTILE
EST 193 CY DDE
SLOPE = 5.0%
LENGTH = 260 LF
SEE DETAIL #1

PNG CAP EXISTING LINE
DURING CONSTRUCTION

END TIP PROJECT B-5652
END OVERLAY
-L_RT- POC STA. 29 + 73.00

-L_DET- PT Sta. 28+40.28 =
-L_RT- POC Sta. 29+71.29

5/14/19 8/15/2022 t_r.dwg U003 - psh.dgn