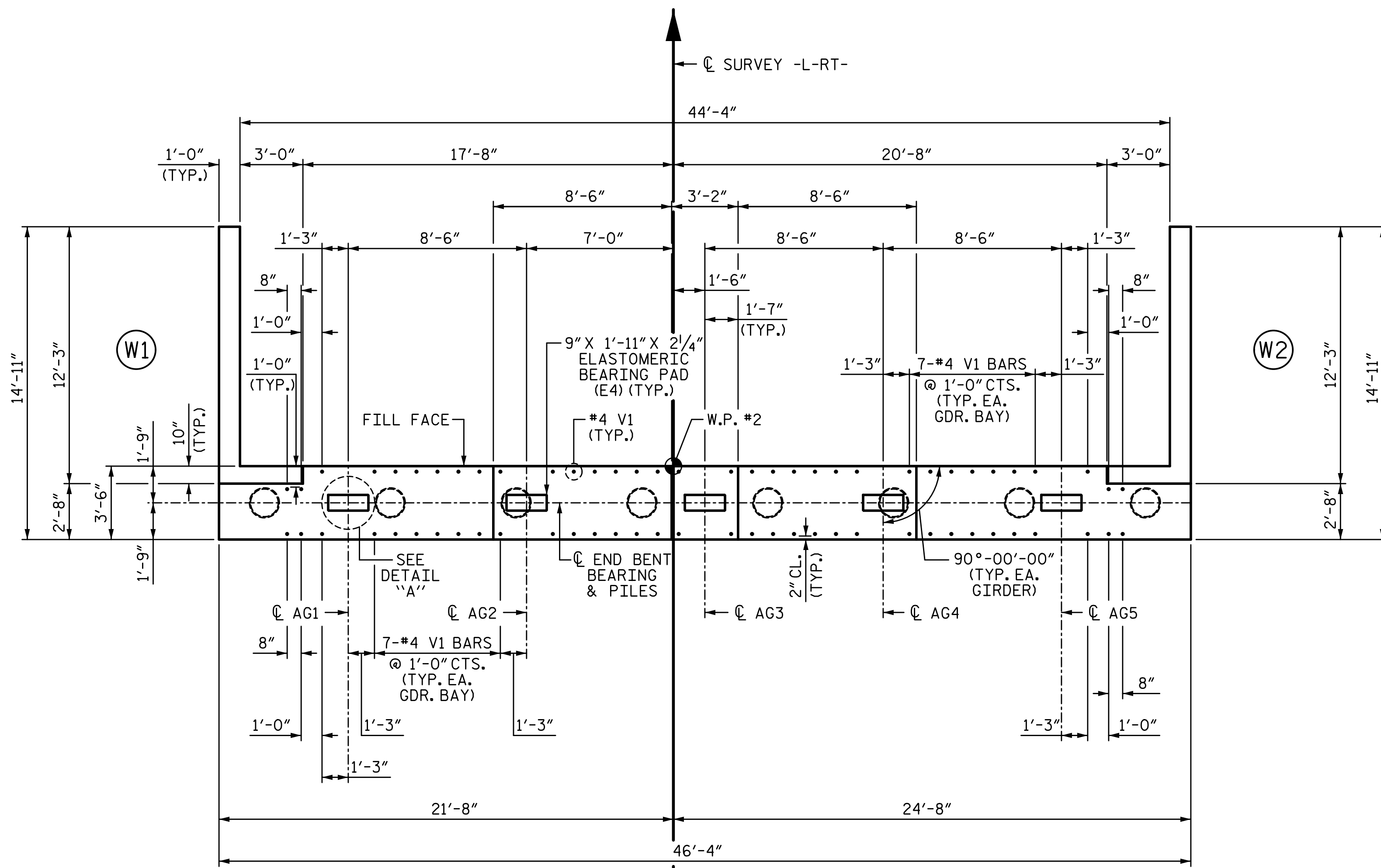
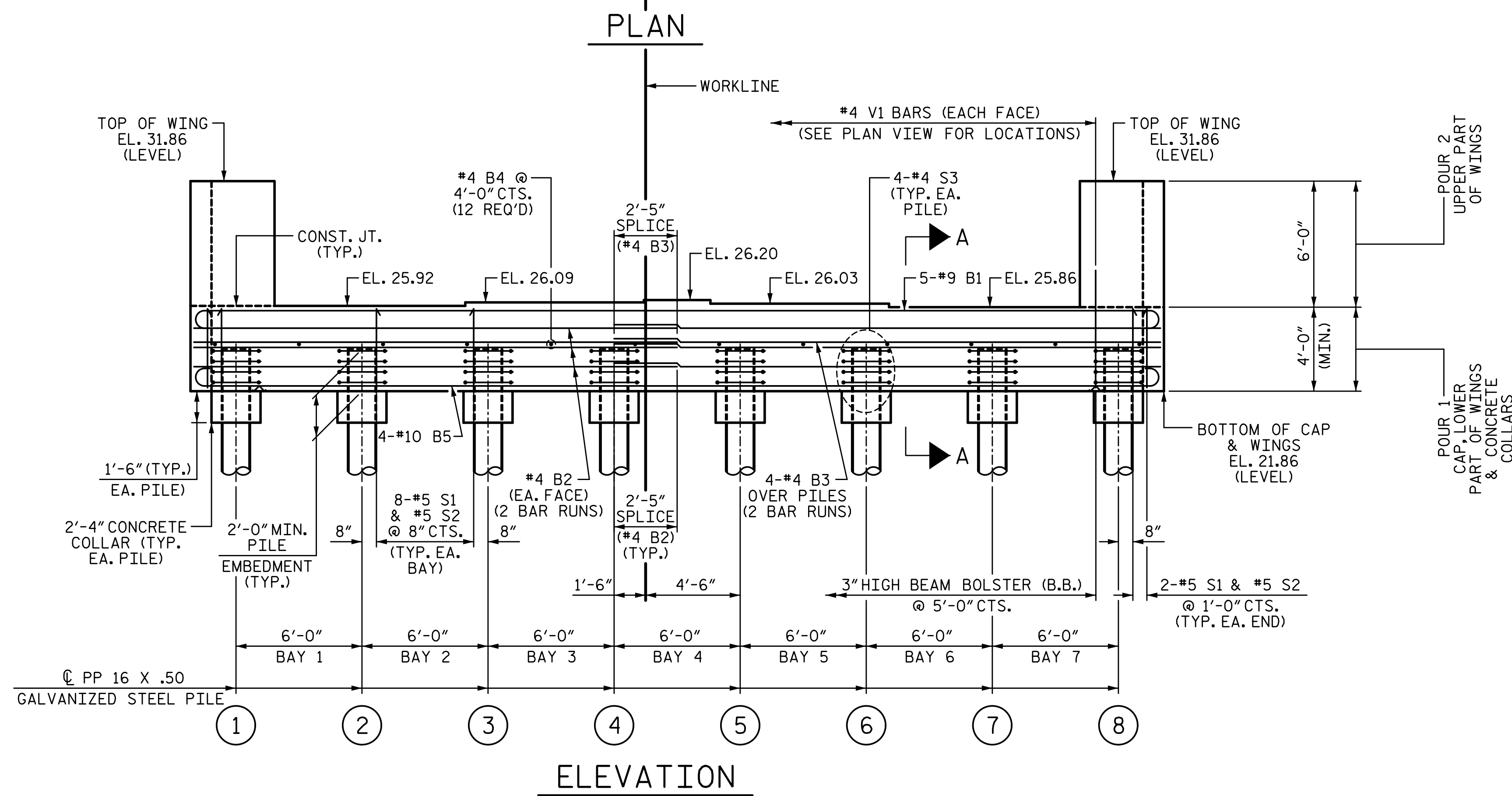
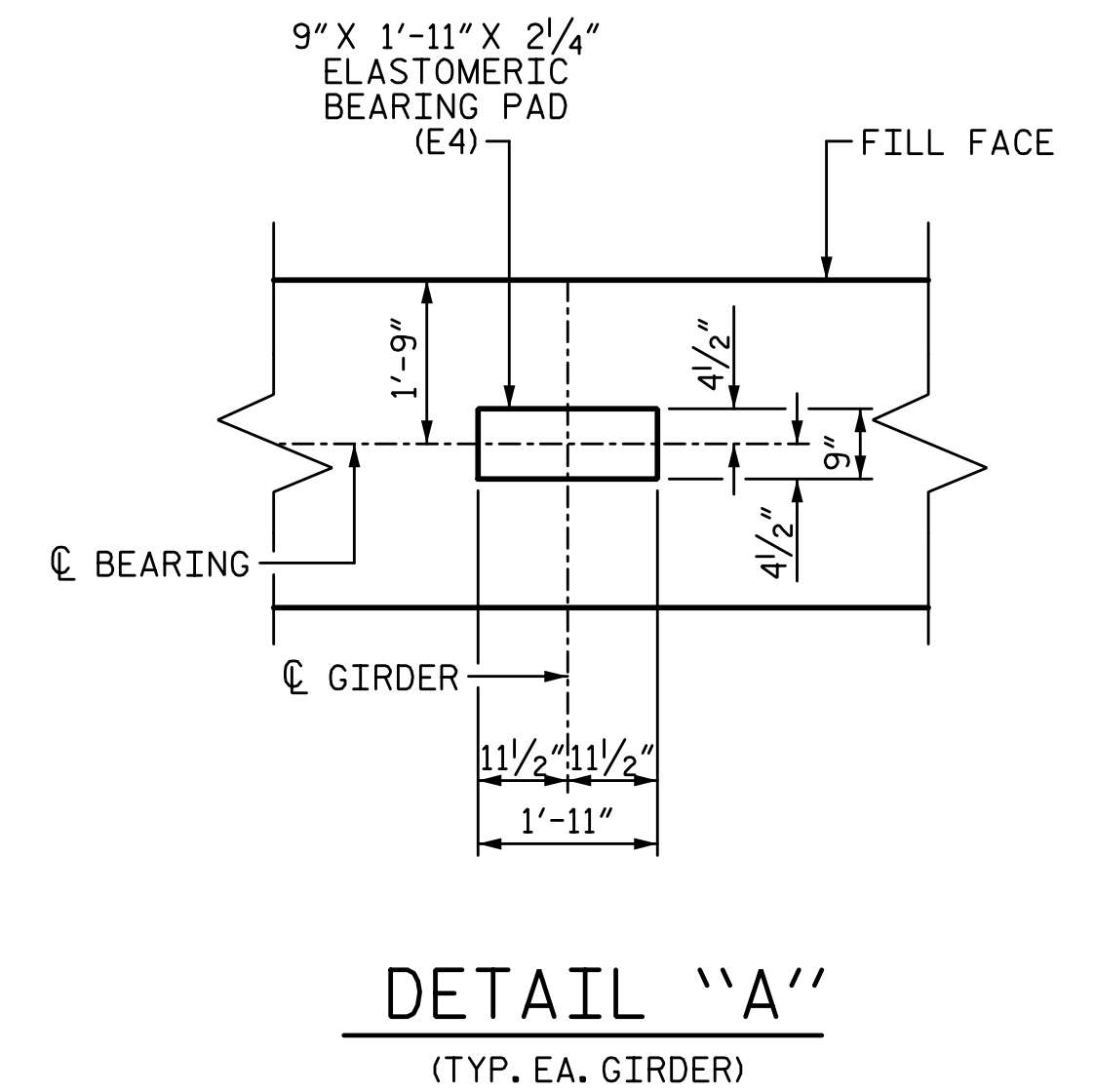


9/14/2022 8:06:05 AM P:\Raleigh\Projects\2018\Division 3 (SEA)\B-5652 (Onslow 33 US17 NBL over Wolf Swamp)\Structures\Drawings\Final\401_B5652_SMU_E2_660033.dgn



NOTES:

- #4 V1 BARS MAY BE SHIFTED SLIGHTLY TO AVOID STIRRUPS IN CAP.
- FOR SECTION A-A, SEE SHEET 3 OF 3.
- THE TOP SURFACE OF THE END BENT CAP AND WINGS (POUR 1), EXCLUDING THE BEARING AREA, SHALL BE RAKED TO A DEPTH OF 1/4".
- FOR PIPE PILE DETAILS, SEE "16" STEEL PIPE PILE" SHEET.



PROJECT NO. B-5652
ONLOW COUNTY
 STATION: 20+64.00 -L-RT-

SHEET 1 OF 3

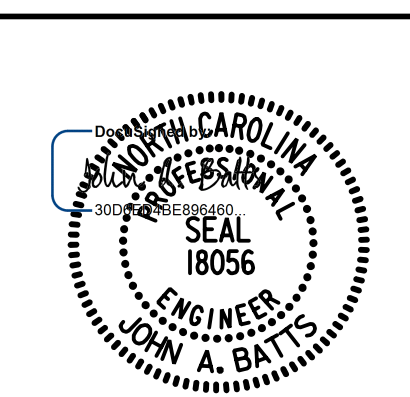
STATE OF NORTH CAROLINA
 DEPARTMENT OF TRANSPORTATION
 RALEIGH
 SUBSTRUCTURE

END BENT 2



5640 Dillard Drive, Suite 200
 Cary, NC 27518

LICENSURE NO. C-4434



9/14/2022 | 5:22 AM

DRAWN BY: S.D. COOPER DATE: 5-22
 CHECKED BY: J.A. BATTS DATE: 5-22
 DESIGN ENGINEER OF RECORD: J.A. BATTS DATE: 5-22

REVISIONS						SHEET NO.
NO.	BY:	DATE:	NO.	BY:	DATE:	S-20
1			3			TOTAL SHEETS
2			4			26

DOCUMENT NOT CONSIDERED FINAL UNLESS ALL SIGNATURES COMPLETED