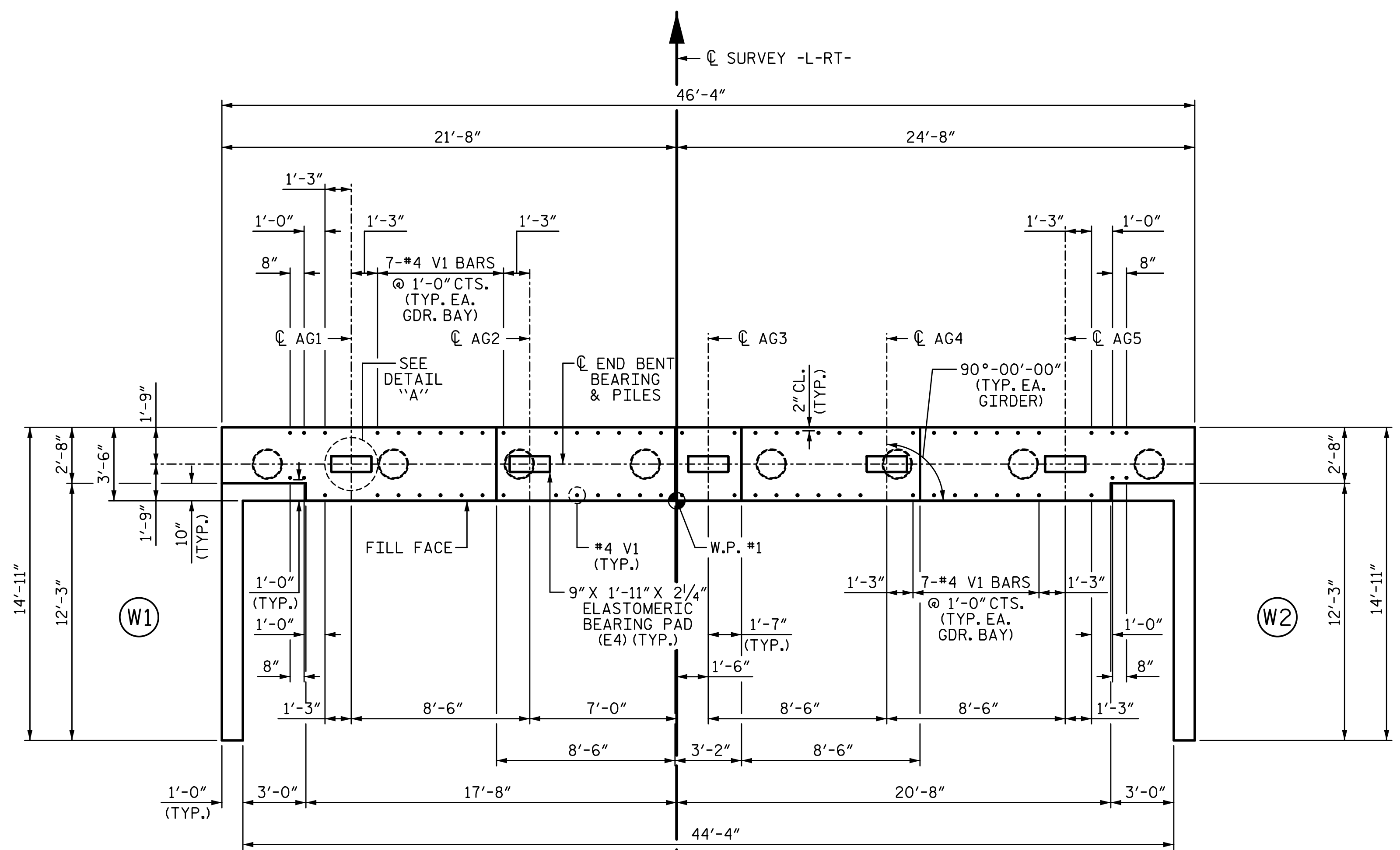


9/14/2022 8:06:03 AM P:\Raleigh\Projects\2018\Division 3 (SEA)\B-5652 (Onslow 33 US17 NBL over Wolf Swamp)\Structures\Drawings\Final\401\_B5652\_SMU\_E1\_660033.dgn



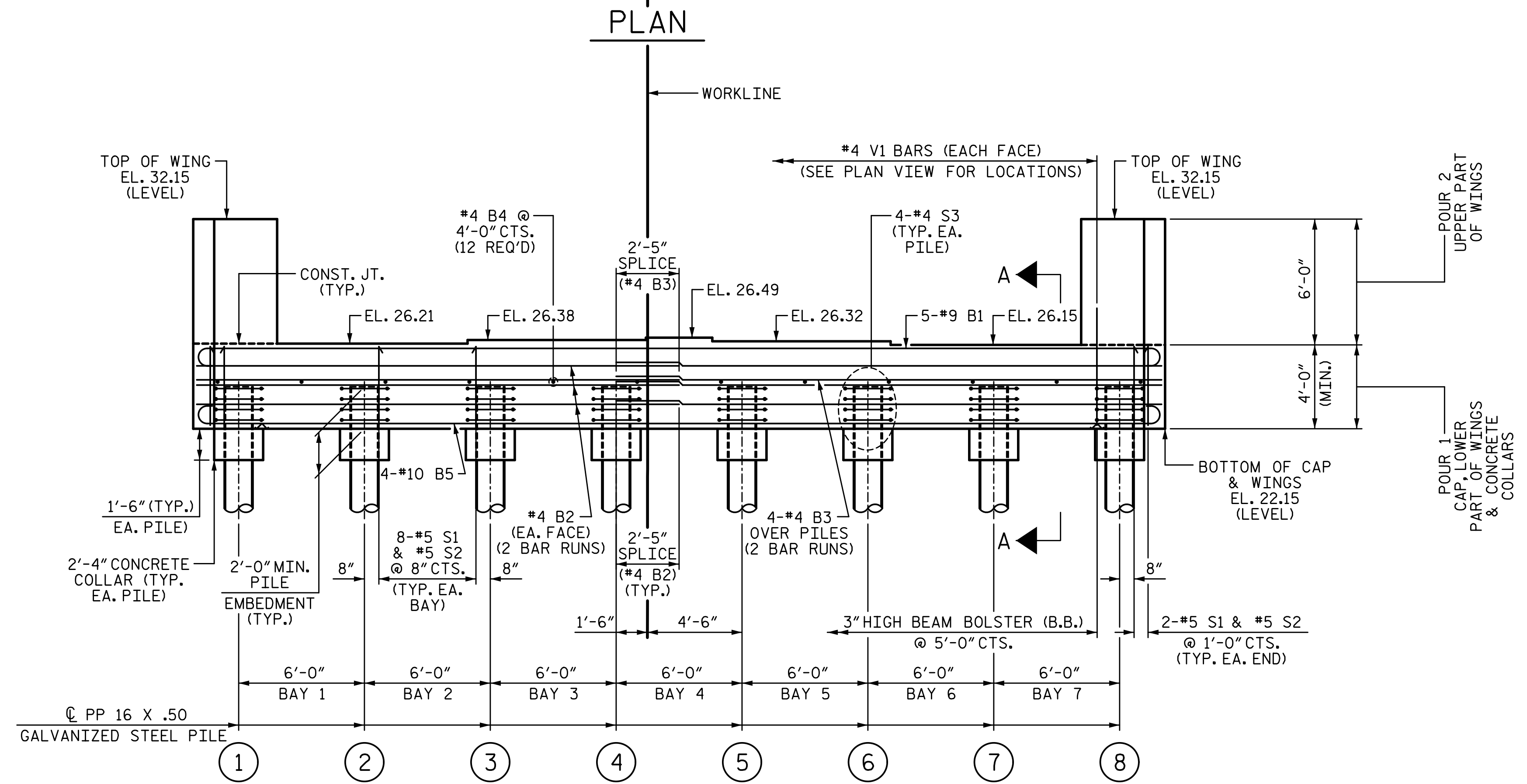
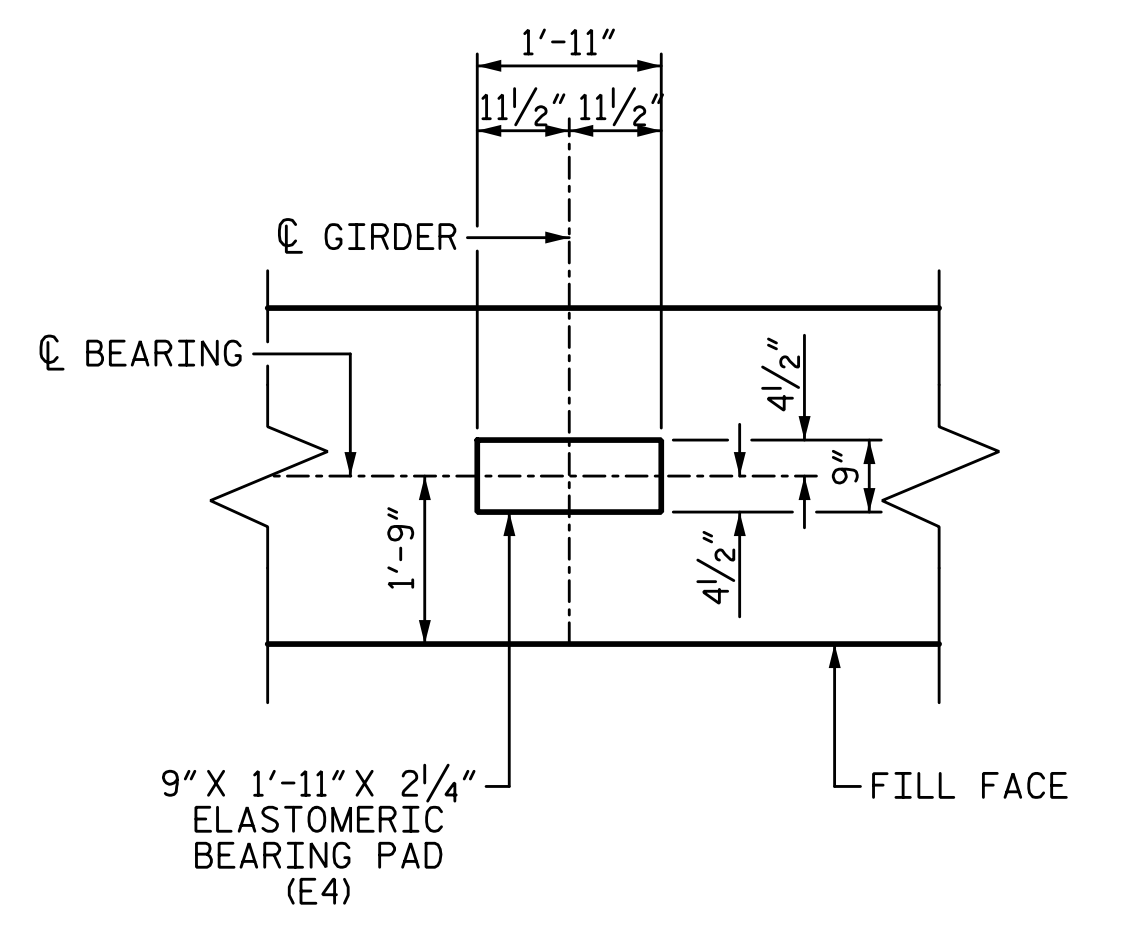
**NOTES:**

#4 V1 BARS MAY BE SHIFTED SLIGHTLY TO AVOID STIRRUPS IN CAP.

FOR SECTION A-A, SEE SHEET 3 OF 3.

THE TOP SURFACE OF THE END BENT CAP AND WINGS (POUR 1), EXCLUDING THE BEARING AREA, SHALL BE RAKED TO A DEPTH OF 1/4".

FOR PIPE PILE DETAILS, SEE "16" STEEL PIPE PILE" SHEET.

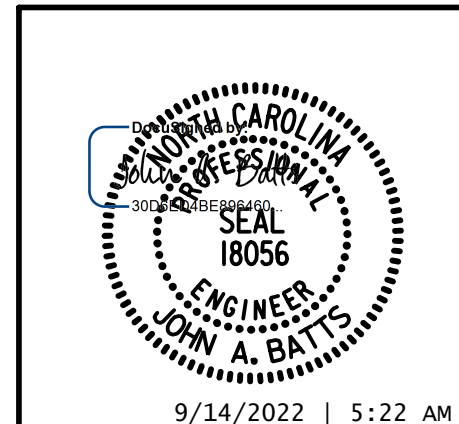


PROJECT NO. B-5652  
ONLOW COUNTY  
 STATION: 20+64.00 -L-RT-

SHEET 1 OF 3

STATE OF NORTH CAROLINA  
 DEPARTMENT OF TRANSPORTATION  
 RALEIGH  
 SUBSTRUCTURE

**END BENT 1**



**W WGI**  
 5640 Dillard Drive, Suite 200  
 Cary, NC 27518  
 LICENSURE NO. C-4434

DRAWN BY: S.D. COOPER DATE: 5-22  
 CHECKED BY: J.A. BATTS DATE: 5-22  
 DESIGN ENGINEER OF RECORD: J.A. BATTS DATE: 5-22

REVISIONS						SHEET NO.
NO.	BY:	DATE:	NO.	BY:	DATE:	S-17
1			3			TOTAL SHEETS
2			4			26

**DOCUMENT NOT CONSIDERED FINAL  
 UNLESS ALL SIGNATURES COMPLETED**